

Yuttarime Gilet



Suggested yarn:

- Keito-Zakka Stores Enchantée [80% cotton, 20% merino wool; 131 yds/120m per 1.41 oz./40g skein]; color #03 Peach Blossom 7 skeins [245g]

Tools/Notions:

- 3.0mm (US 3) and 3.3mm (approx. US 4) knitting needles or sizes necessary to achieve gauge
- 3.0mm (US 3) double-pointed knitting needles or size necessary to achieve gauge
- 7 buttons (15mm/0.59")

Finished measurements:

- bust 102.5cm/40.35"
- cross back width 35cm/13.78"
- back length 60cm/23.62"

Gauge (10cm/4" square):

- stockinette stitch: 24 sts and 36 rows
- pattern stitch: 23 sts and 36 rows

Gauge may vary according to individual knitting style. Change needle size if necessary to achieve gauge. Alternatively, rework pattern with your own gauge measurements.

Summary

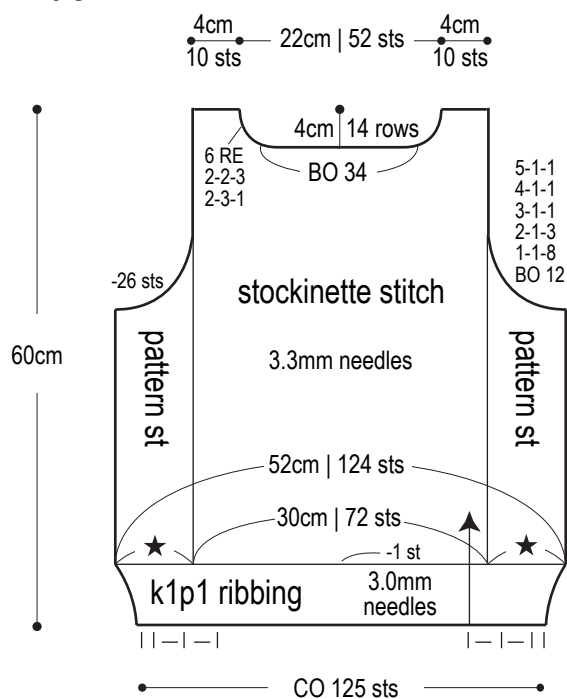
Body: Cast on with long-tail cast-on method. Work in k1p1 ribbing for 28 rows. Continue, working sides in pattern stitch and center panel in stockinette stitch. Shape armscye and neckline by binding off stitches as indicated and by working decreases at edges as indicated.

Finishing: Seam shoulders with crochet slip stitch seam. Seam sides with mattress stitch. Pick up stitches around armholes; work edging in k1p1 ribbing. Work buttonband along front edges, working buttonholes in right front only. Pick up stitches around neckline; work collar edging. Bind off ribbing in pattern. Fasten buttons to left front buttonband.

Abbreviations:

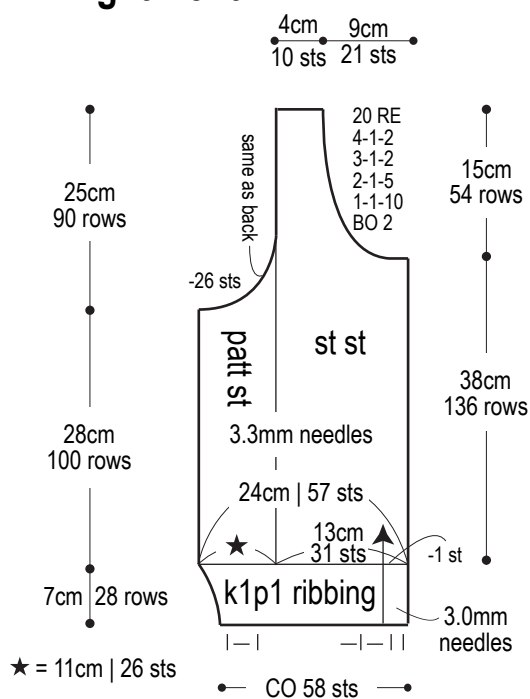
BO = bind off
CO = cast on
k = knit
p = purl
PU = pick up
RE = row(s) even
= rows-stitches-times

Back



Right front

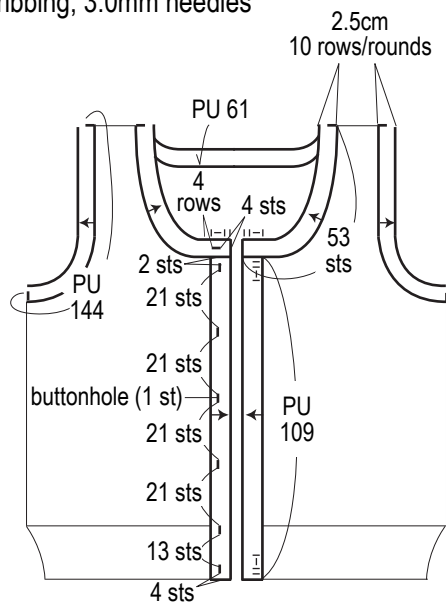
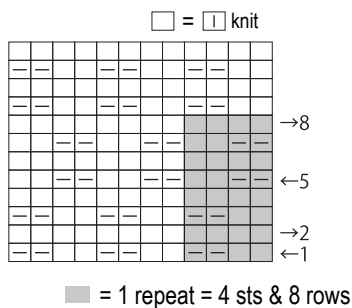
※Reverse shaping for left front.



Buttonband, collar, and armhole edging

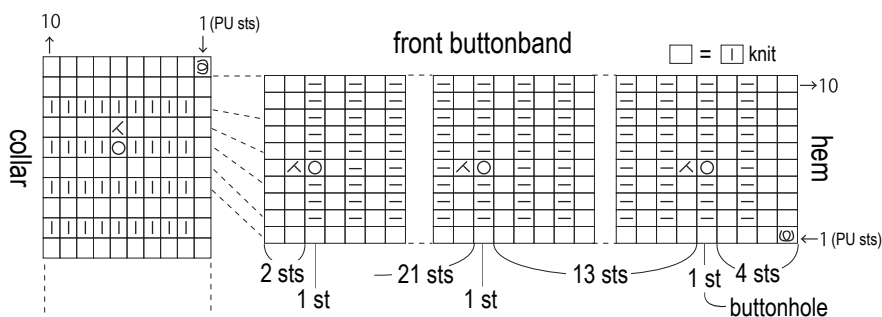
k1p1 ribbing, 3.0mm needles

Pattern stitch



Buttonband & collar

k1p1 ribbing, 3.0mm needles



⊗ = backwards loop cast-on increase

※For hem edge of buttonband and edge of collar, increase 1 st with backwards loop cast-on before picking up additional stitches.