

641pul 2-way Sweater



Suggested yarn:

- Pierrot Yarns Julien [95% silk, 5% polyester; 192 yds/176m per 1.41 oz./40g skein];
 - color #78 French Rose, 5 skeins [190g]

Tools/Notions:

- 2.5mm (approx. US B or C) crochet hook or size necessary to achieve gauge

Finished measurements:

- bust 90cm/35.43"
- center back neck-to-cuff 25cm/9.96"
- back length 51.5cm/20.28"

Gauge (10cm/4" square):

- pattern stitch: 30.5 sts and 14 rows
- edging: 30.5 sts and 26 rounds

Gauge may vary according to individual crochet style. Change hook size if necessary to achieve gauge. Alternatively, rework pattern with your own gauge measurements.

Summary

❖**Note:** Like all Japanese patterns, stitch counts given here for foundation chains do not include any chain sts needed for turning posts.

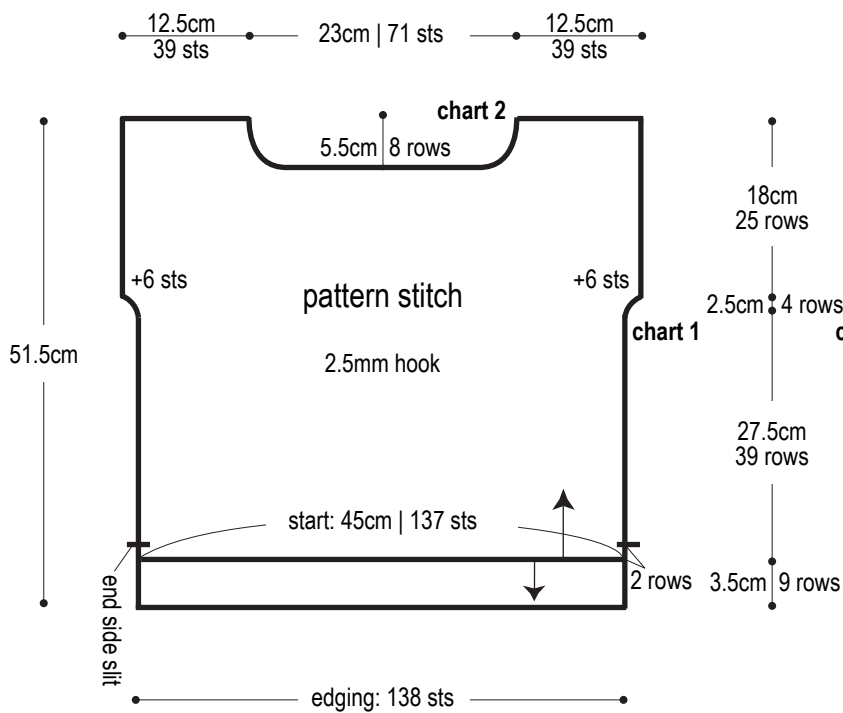
Body: Work foundation chain to begin. Work in pattern stitch according to schematics. Work edging along hem.

Finishing: Seam shoulders with woven seam. Sides sides with chain seam (alternating chain st and slip st as needed to maintain pattern) except for side slit areas, which should be left unseamed. Work edging in the round at cuffs and neckline.

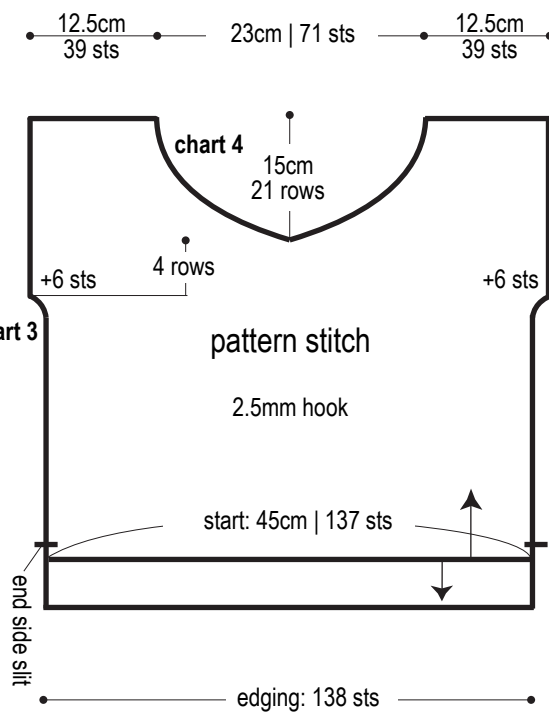
Abbreviations:

ch = chain

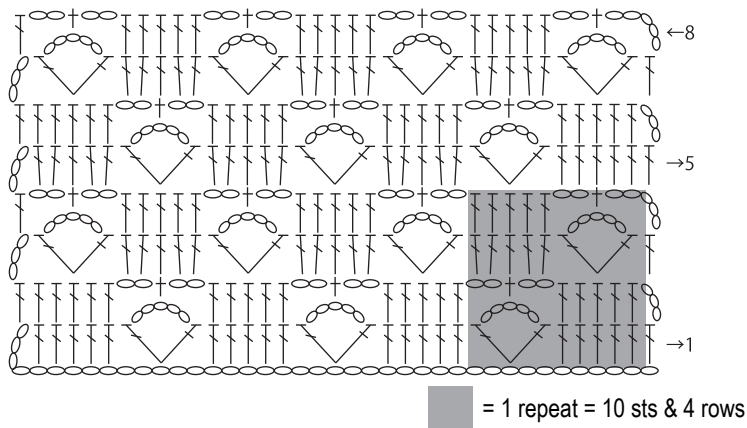
Back



Front

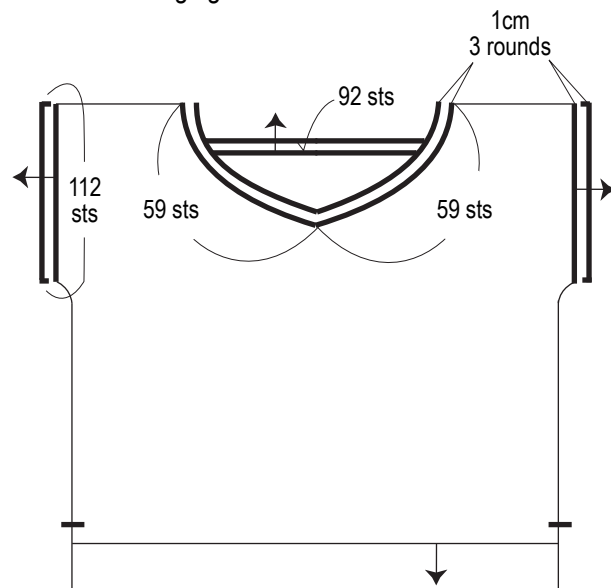


Pattern stitch 2.5mm hook



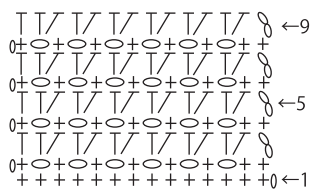
Finishing

edging: 2.5mm hook



Edging 2.5mm hook

Hem (9 rows)



Armholes & neckline (3 rounds)



Back

center
back
neckline

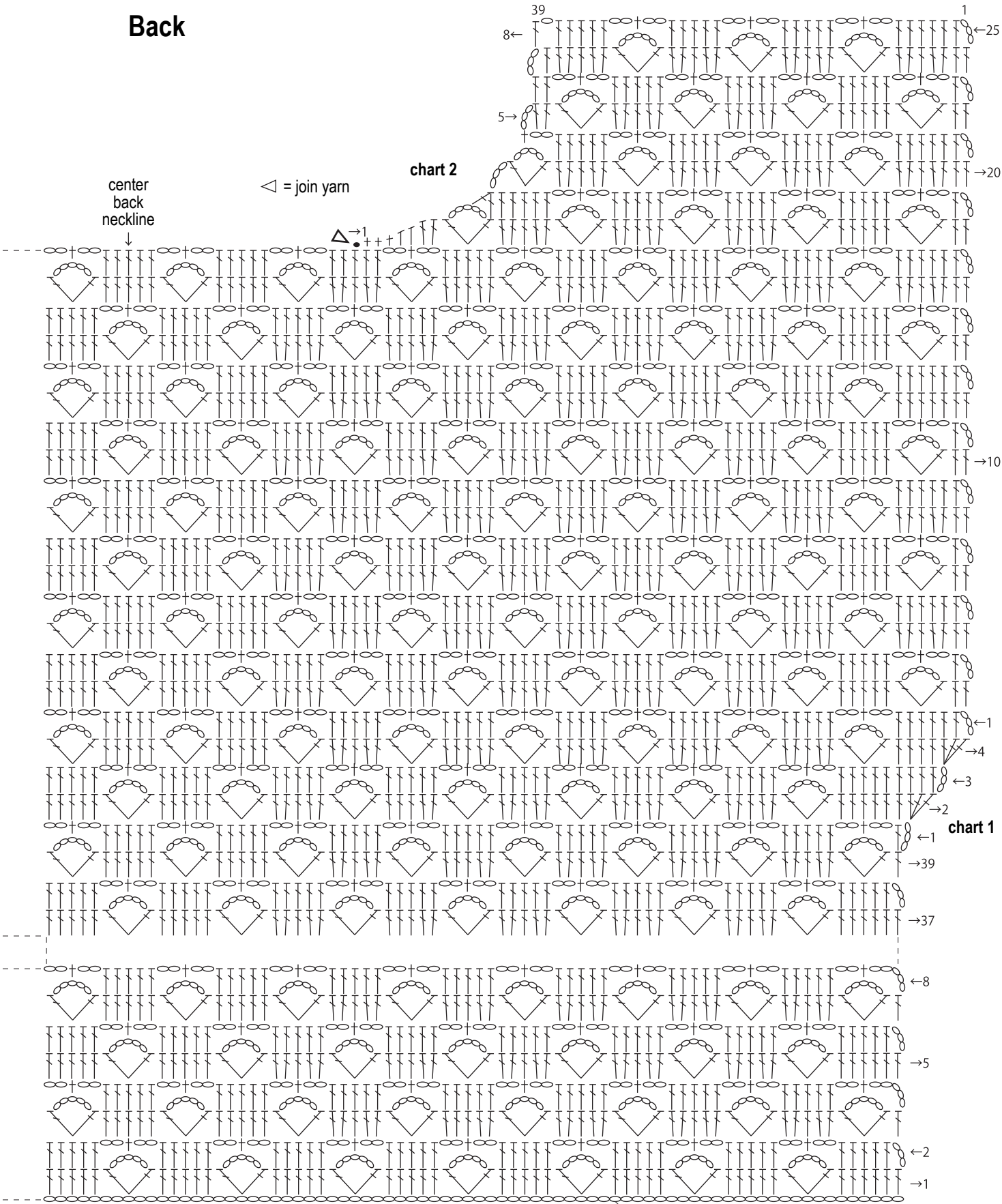
◁ = join yarn

chart 2

△ → 1

chart 1

ch137 to begin



Front

