

578ac Beauty Arm Covers



Suggested yarn:

- Pierrot Yarns Beauty Silk Cotton [90% cotton, 10% silk; 180 yds/165m per 1.06 oz./30g skein];
 - color #14 silver gray, 2 skeins [45g]

Tools/Notions:

- 2.7mm (approx. US 2), 3.0mm (US 3), and 3.3mm (approx. US 4) knitting needles or sizes necessary to achieve gauge
- 2.3mm (approx. US B) crochet hooks or size necessary to achieve gauge

Finished measurements:

- circumference 24cm/9.45"
- length 32cm/12.60"

Gauge (10cm/4" square):

- pattern stitch (with 3.0mm needles): 31.5 sts and 37 rows
- pattern stitch (with 3.3mm needles): 30 sts and 36 rows

Gauge may vary according to individual knitting style. Change needle size if necessary to achieve gauge. Alternatively, rework pattern with your own gauge measurements.

Summary

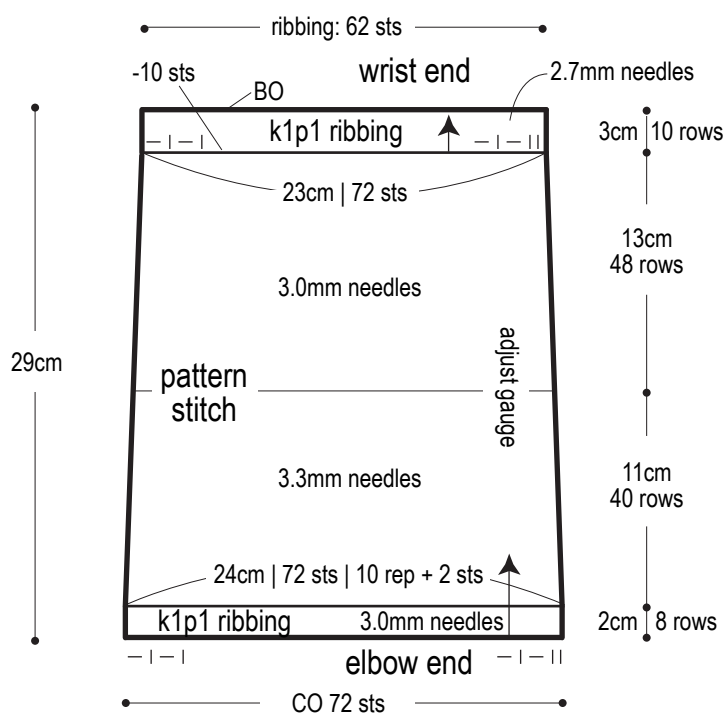
Arm cover (make 2): Cast on with long-tail cast-on method. Work in k1p1 ribbing. Change needle size and continue in pattern stitch. Change needle size again when indicated to adjust gauge. Change needle size and work k1p1 ribbing. Bind off.

Finishing: On each cover, seam sides with mattress stitch to form a tube. Crochet edging in the round along cuff edge.

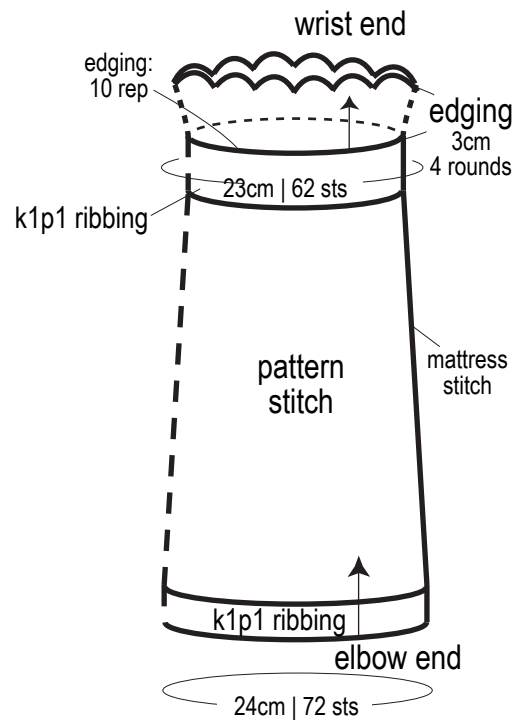
Abbreviations:

BO = bind off
CO = cast on
k = knit
p = purl
rep = pattern repeat(s)

Arm cover (make 2)

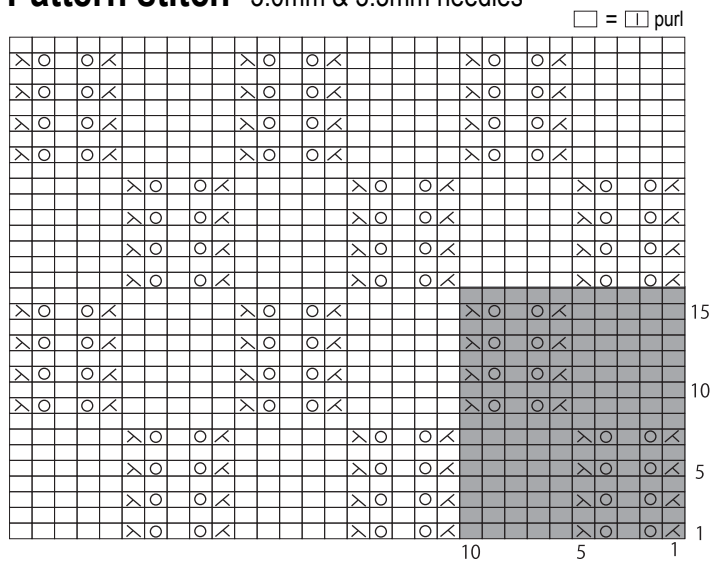


Finishing



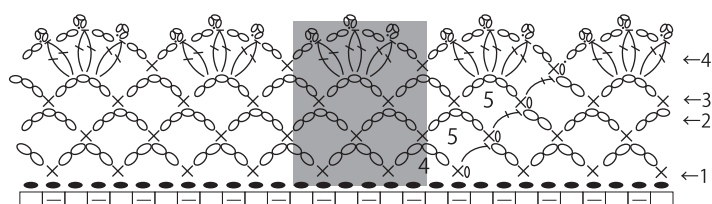
※Do not block ribbing at wrist end.

Pattern stitch 3.0mm & 3.3mm needles



■ = 1 repeat = 10 sts & 16 rows

Edging 2.3mm hook



■ = 1 repeat = 6 sts & 4 rounds