

# 341ss Sora Slash-neck Summer Top



## Suggested yarn:

- Pierrot Yarns Sora [50% cotton, 50% nylon; 73 yds/67m per 1.41 oz./40g skein];
- color #07 kumo, 10 skeins [395g]

## Tools/Notions:

- 3.6mm (approx. US 5) and 3.9mm (approx. US 6) knitting needles or sizes necessary to achieve gauge

## Finished measurements:

- bust 100cm/39.37"
- center back neck-to-cuff 43cm/16.93"
- back length 50cm/19.69"

## Gauge (10cm/4" square):

- pattern stitch (with 3.9mm needles): 19 sts and 34 rows
- garter stitch (with 3.9mm needles): 19 sts and 34 rows
- k1p1 ribbing (with 3.9mm needles): 20 sts and 29 rows
- k3p2 ribbing (with 3.6mm needles): 21.5 sts and 30 rows

*Gauge may vary according to individual knitting style. Change needle size if necessary to achieve gauge. Alternatively, rework pattern with your own gauge measurements.*

## Summary

**Body (make 2):** Cast on with long-tail cast-on method. Work in k3p2 ribbing. Continue in pattern stitch and then k1p1 ribbing. Bind off stitches for neckline. After making second piece, seam shoulders with crochet slip stitch seam.

**Sleeve:** Pick up stitches for sleeve between shoulder and markers. Work in garter stitch. Bind off from wrong side.

**Finishing:** Seam sides and sleeve undersides with mattress stitch. Block with steam iron.

## Abbreviations:

BO = bind off

CO = cast on

k = knit

p = purl

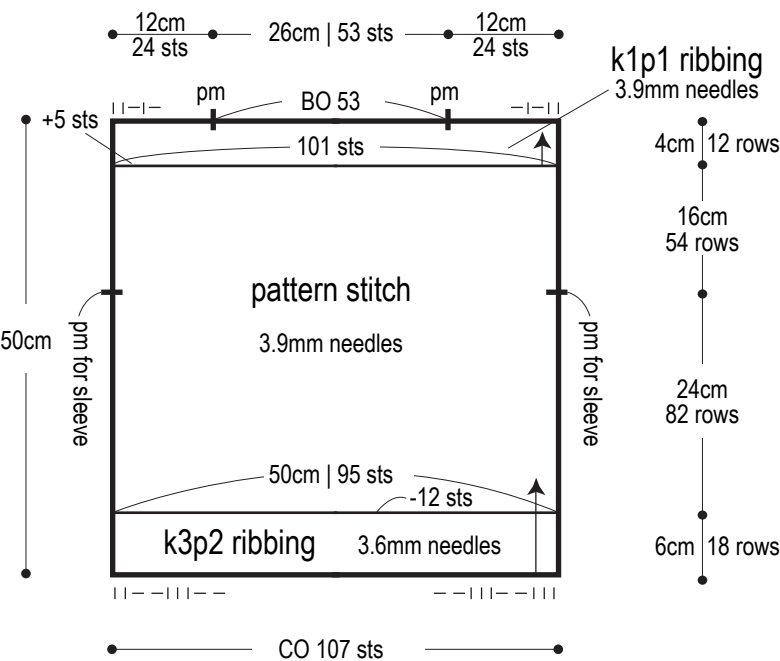
pm = place marker

PU = pick up

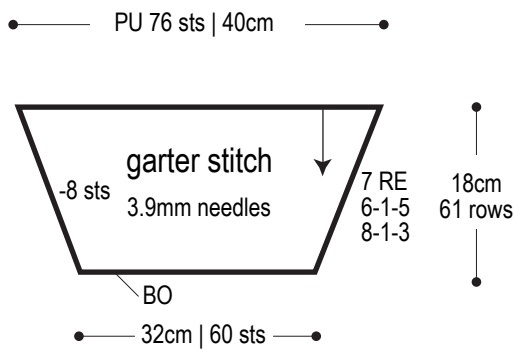
RE = row(s) even

# # # = rows-stitches-times

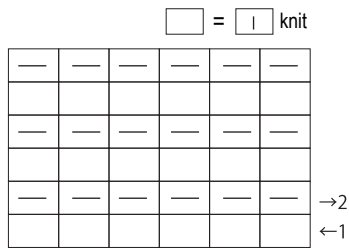
Body (make 2)



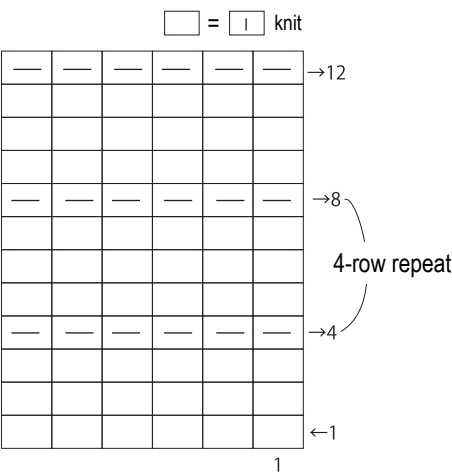
Sleeve



Garter stitch  
3.9mm needles



Pattern stitch  
3.9mm needles



Finishing

