

# 216ss-10 Hooded Vest



## Suggested yarn:

- Pierrot Yarns Star Pochette [50% cotton, 50% merino wool; 131 yds/120m per 1.41 oz./40g skein];
  - medium size: color #103 military, 8 skeins [310g]
  - large size: color #103 military, 9 skeins [350g]

## Tools/Notions:

- 3.0mm (US 3), 3.3mm (approx. US 4), and 3.6mm (approx. US 5) knitting needles or sizes necessary to achieve gauge

## Finished measurements:

- |                                |                                |
|--------------------------------|--------------------------------|
| • medium size:                 | • large size:                  |
| • chest 96cm/37.80"            | • chest 102cm/40.16"           |
| • cross back width 40cm/15.75" | • cross back width 42cm/16.54" |
| • back length 63cm/24.80"      | • back length 65cm/25.59"      |

## Gauge (10cm/4" square):

- pattern stitch: 21 sts and 35 rows
- garter stitch: 21 sts and 40 rows

*Gauge may vary according to individual knitting style. Change needle size if necessary to achieve gauge. Alternatively, rework pattern with your own gauge measurements.*

## Summary

**Body:** Cast on with long-tail cast-on method. Work k1p1 ribbing, then continue in garter stitch, pattern stitch, and garter stitch. Shape armscye and neckline by binding off stitches as indicated and by working decreases at edges as indicated.

**Pocket:** Cast on with long-tail cast-on method. Work in pattern stitch. Bind off. Pick up stitches along each pocket opening (curved edge) and work k1p1 ribbing. Bind off in pattern.

**Hood:** Work right and left hood pieces in pattern stitch. (Reverse shaping of left hood for right hood.) Seam hood pieces together with mattress stitch and whipstitch (see finishing schematic). Pick up stitches around head opening; work edging in k1p1 ribbing. Bind off in pattern.

**Finishing:** Seam pocket to front of vest. Seam shoulders together with crochet slip stitch seam. Seam sides with mattress stitch. Attach hood to neckline using whipstitch. Pick up stitches around armhole; work edging in k1p1 ribbing in the round. Bind off in pattern.

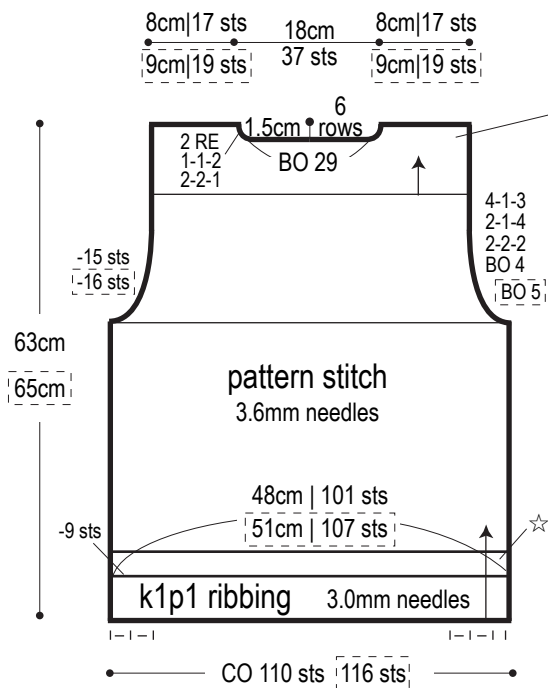
## Abbreviations:

BO = bind off  
ch = (crochet) chain stitch  
CO = cast on  
k = knit  
p = purl  
PU = pick up  
RE = row(s) even  
# # # = rows-stitches-times

[ ] = large size

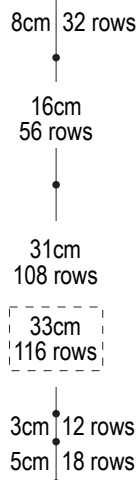
※Where only one set of numbers are provided, they refer to both sizes.

## Back



## Front

garter stitch  
3.3mm needles

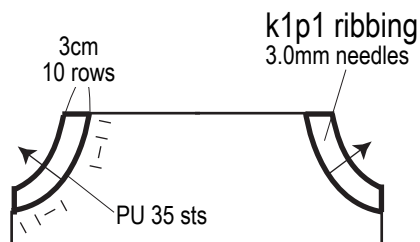
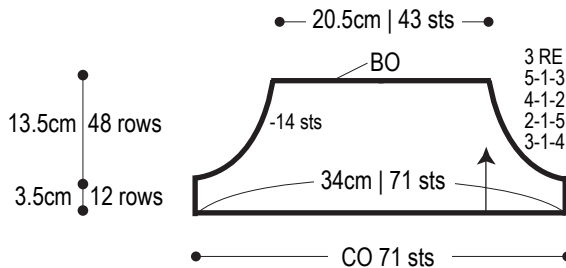


☆ = garter stitch  
3.3mm needles

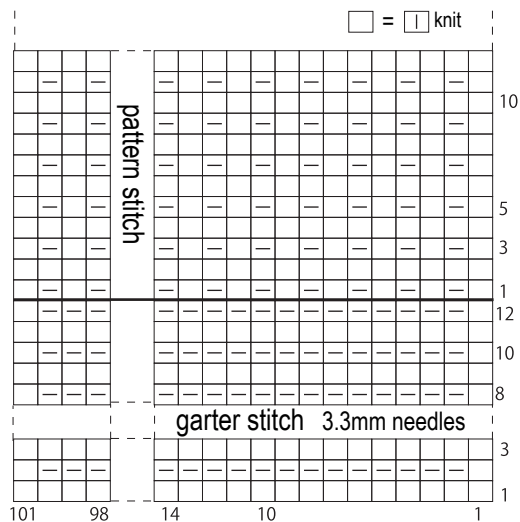
★ = 17cm

## Pocket

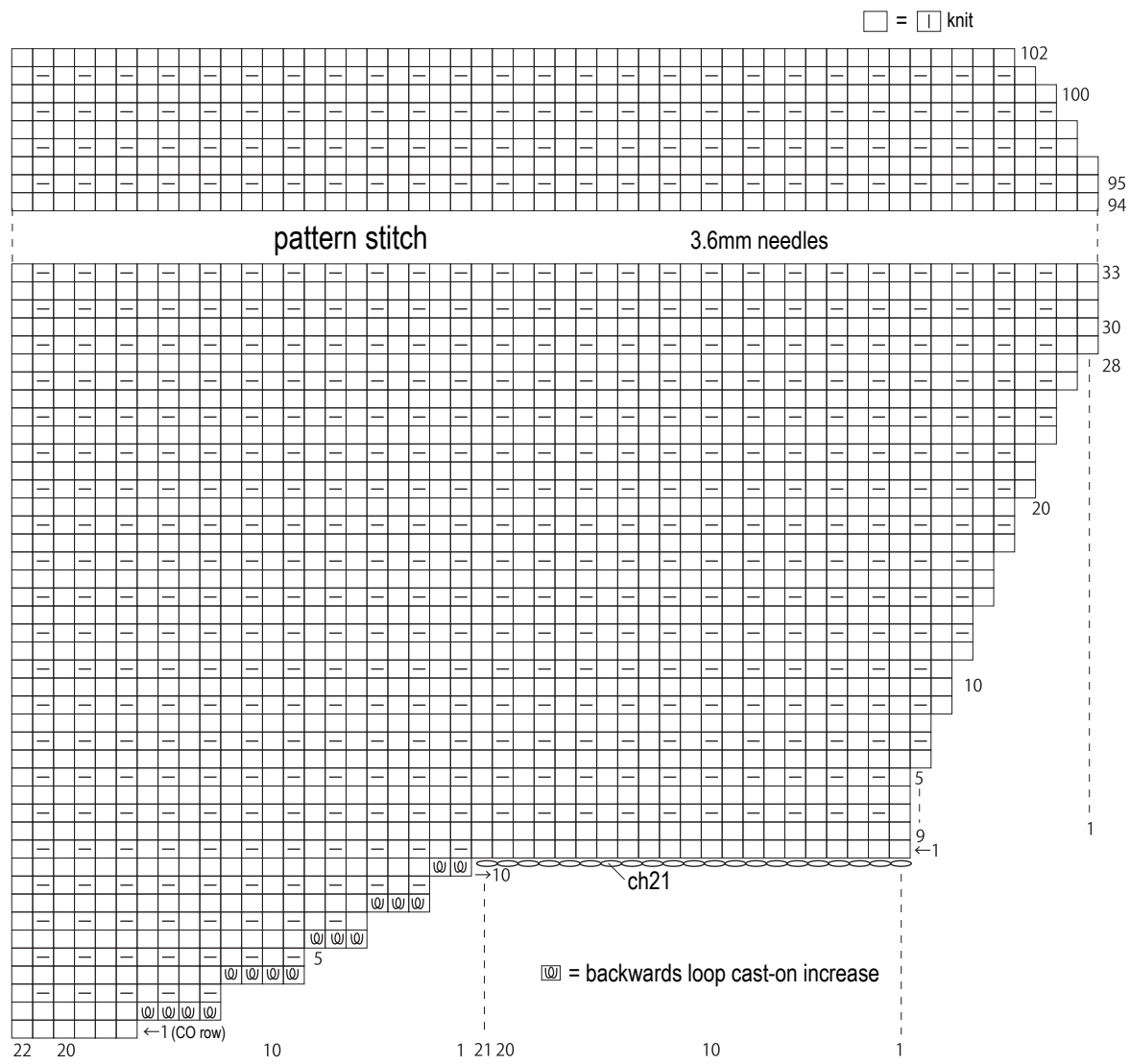
pattern stitch, 3.6mm needles



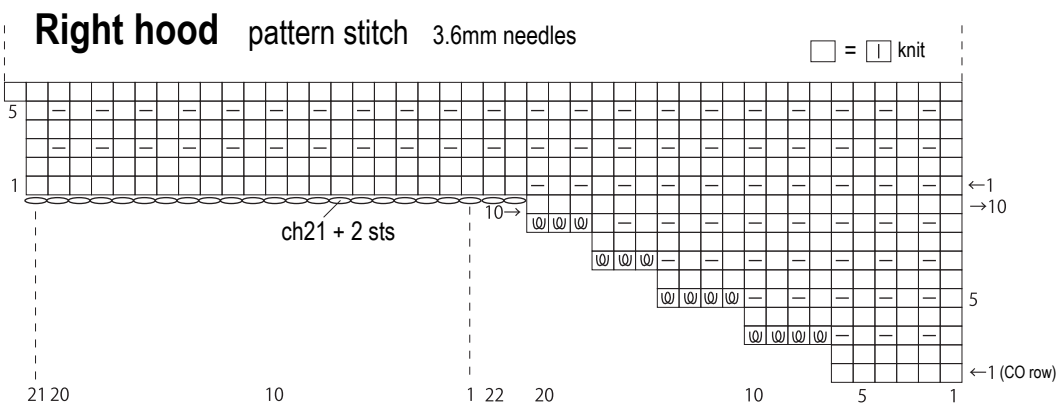
## Pattern stitch 3.6mm needles



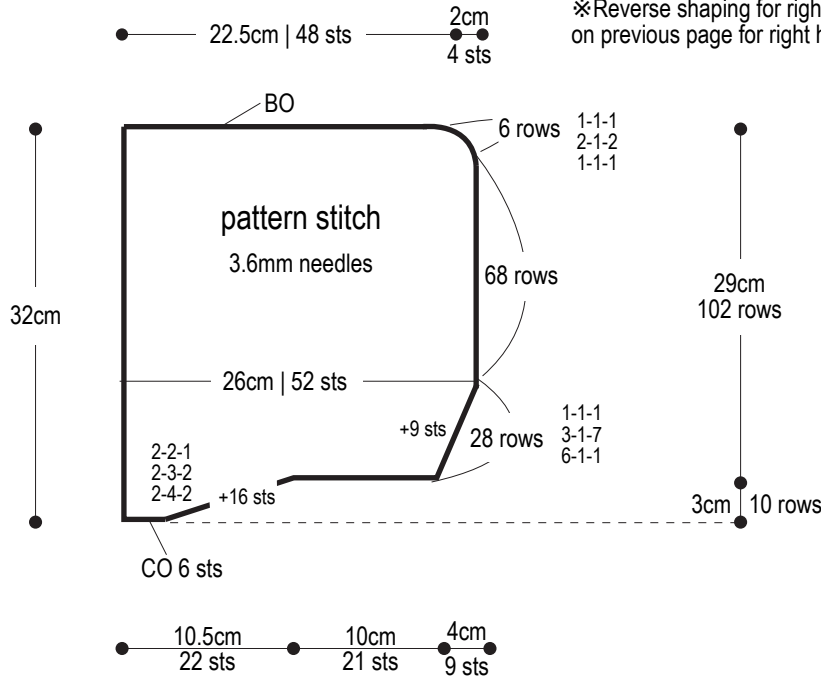
Left hood



Right hood



# Left hood



※Reverse shaping for right hood. (See chart on previous page for right hood cast-on.)

# Finishing

k1p1 ribbing  
3.0mm needles

