

216ss-28 Straw Top Hat



Suggested yarn:

- Pierrot Yarns Raffia [100% rayon; 124 yds/113m per 1.76 oz./50g skein];
 - color #72 coconut, 2 skeins [95g]

Tools/Notions:

- 3.5mm (US E) crochet hook or size necessary to achieve gauge
- teknorote (polypropylene memory wire) to stiffen brim
- black ribbon (4cm/1.57" wide, 70cm/27.56" long)
- black sewing thread
- sewing needle
- glue

Finished measurements:

- head circumference 56.5cm/22.24"
- hat depth 9.5cm/3.74"

Gauge (10cm/4" square):

- single crochet (US): 18 sts and 19 rows

Gauge may vary according to individual crochet style. Change hook size if necessary to achieve gauge. Alternatively, rework pattern with your own gauge measurements.

Summary

✳️**Note:** Like all Japanese patterns, stitch counts given here for foundation chains do not include any chain sts needed for turning posts.

Top of hat: Work magic ring to begin, then work sc in the round, increasing as indicated in chart. On final two rounds of top, work stitches around teknorote.

Sides of hat: ch102 to begin and join into the round. Work sc in the round.

Brim: ch102 to begin and join into the round. Work sc in the round, increasing as indicated. On rounds indicated, work stitches around teknorote.

Finishing: With wrong sides facing each other, seam top and sides from right side using whipstitch. Seam sides and brim from wrong side using whipstitch. Fasten ribbon to hat.

Abbreviations:

ch = chain

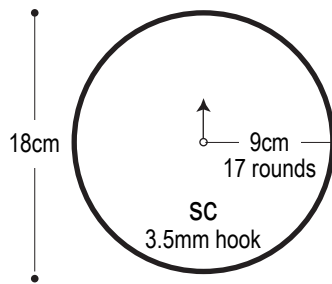
m = magic ring/circle

RS = right side

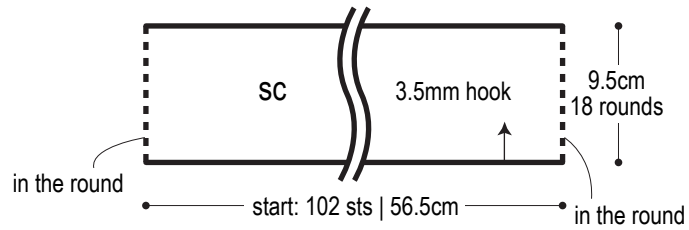
sc = single crochet (US)

WS = wrong side

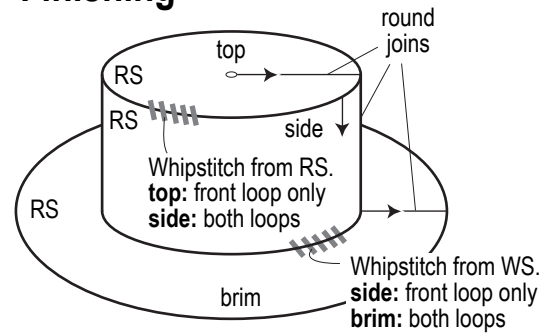
Top 3.5mm hook



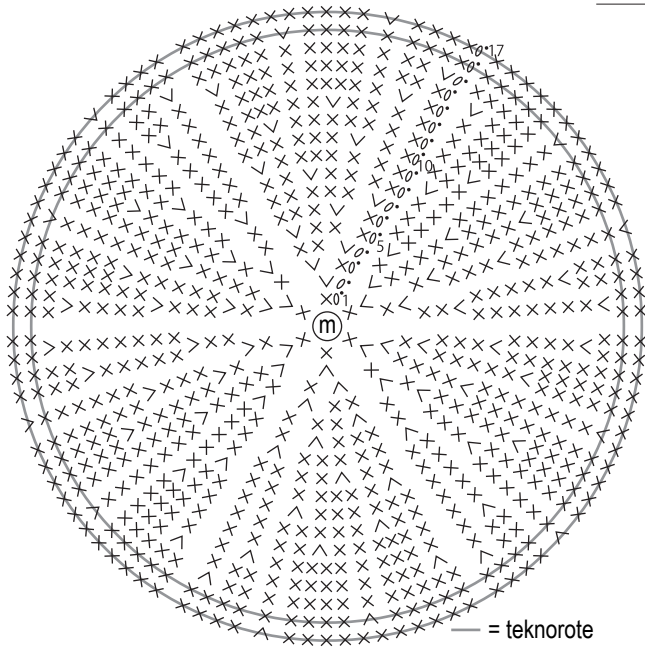
Sides 3.5mm hook



Finishing



Top 3.5mm hook

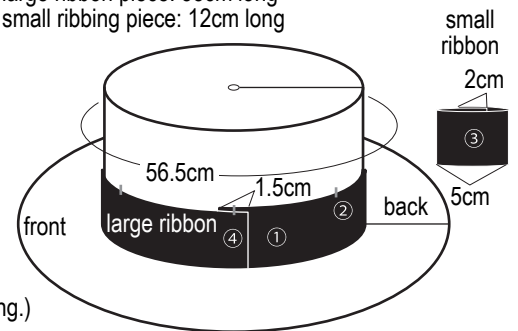


round no.	stitch count
17	102
16	96
15	90
14	84
13	78
12	72
11	66
10	60
9	54
8	48
7	42
6	36
5	30
4	24
3	18
2	12
1	6 (Work into magic ring.)

+6 sts
per round

Ribbon placement

large ribbon piece: 58cm long
small ribbing piece: 12cm long



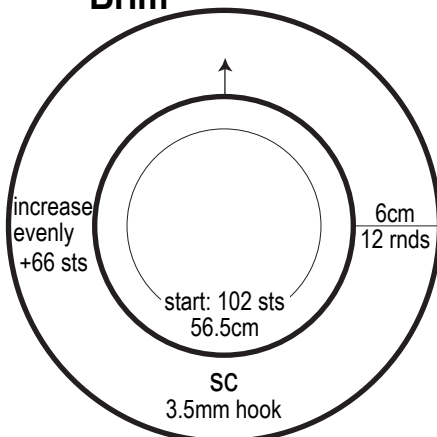
① Wrap large ribbon around hat. Secure overlap section with glue.

② Sew large ribbon to hat such that stitches aren't visible.

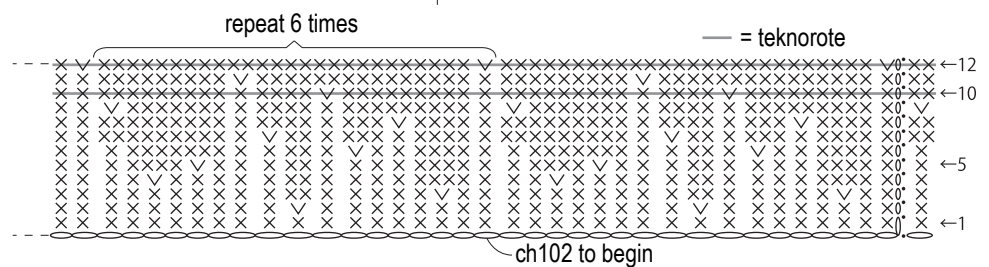
③ Form loop with small ribbon. Secure overlap section with glue.

④ Place small ribbon over large ribbon. Secure with glue or sew in place.

Brim



Brim 3.5mm hook



round no.	stitch count
12	168
11	162
10	156
9	150
8	144
7	138
6	132
5	126
4	120
3	114
2	108
1	102 (ch to begin)

+6 sts
per round