

216ss-26 Men's Shorts



Suggested yarn:

- Pierrot Yarns Anouk Linen [100% linen; 131 yds/120m per 1.76 oz./50g cone];
 - color #04 dark blue, 3 cones [150g]
 - color #07 citron, 2 cones [90g]
 - color #08 silver gray, 4 cones [200g]

Tools/Notions:

- 2.5mm (approx. US B or C) crochet hook or size necessary to achieve gauge
- 1.2m/3.94' length of drawstring cord (6mm/0.24" diameter)

Finished measurements:

- waist 94cm/37.01"
- pant length 44.5cm/17.52"

Gauge (10cm/4" square):

- pattern stitch: 28 sts and 14 rows

Gauge may vary according to individual crochet style. Change hook size if necessary to achieve gauge. Alternatively, rework pattern with your own gauge measurements.

Summary

✳️**Note:** Like all Japanese patterns, stitch counts given here for foundation chains do not include any chain sts needed for turning posts.

Front & back of shorts (make 2): Work foundation chain to begin, then work in pattern stitch according to chart, changing color every row as indicated.

Finishing: Seam right/left fronts to backs with whipstitch. Seam sides and crotch with whipstitch. Seam front/back crotch rise with whipstitch. Work waistband in the round along edge of waist section. Thread drawstring through waistband where indicated.

Abbreviations:

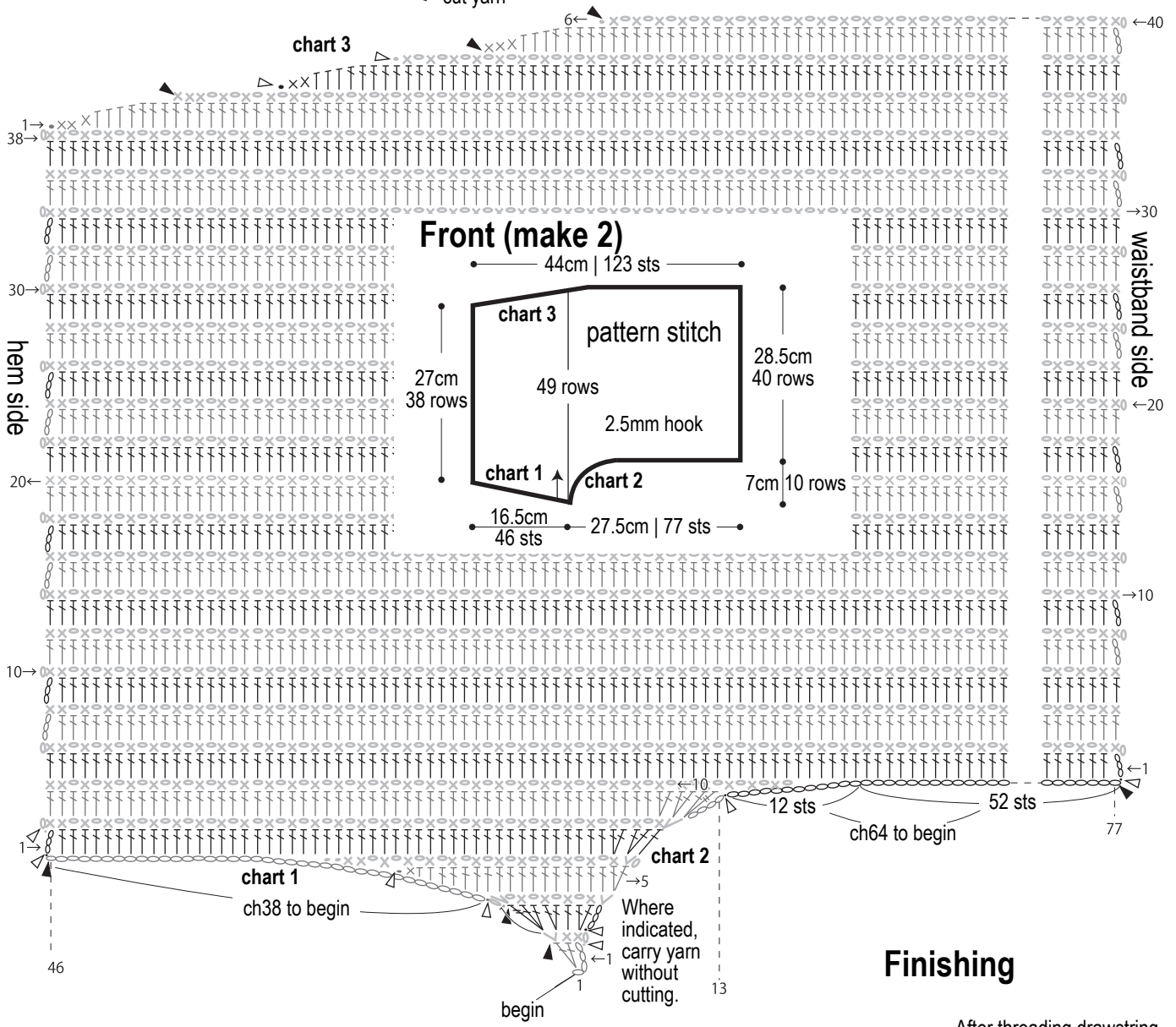
ch = chain

sc = single crochet (US)

Front (make 2)

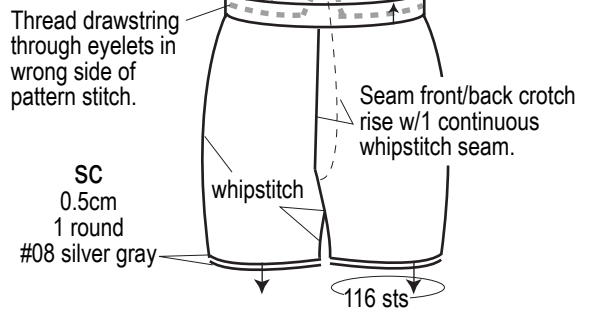
2.5mm hook

- ~ = carry yarn
- <= join yarn
- ▲ = cut yarn



Finishing

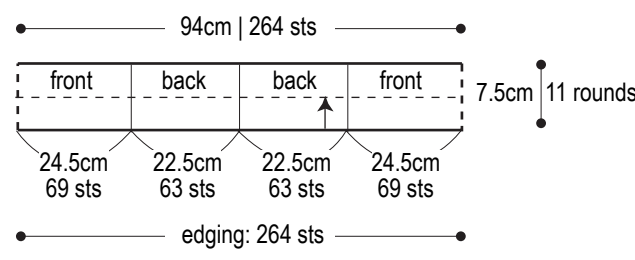
After threading drawstring through waistband, knot each end.
Crochet waistband, then fold to inside. Tack down with whipstitch.



Waistband

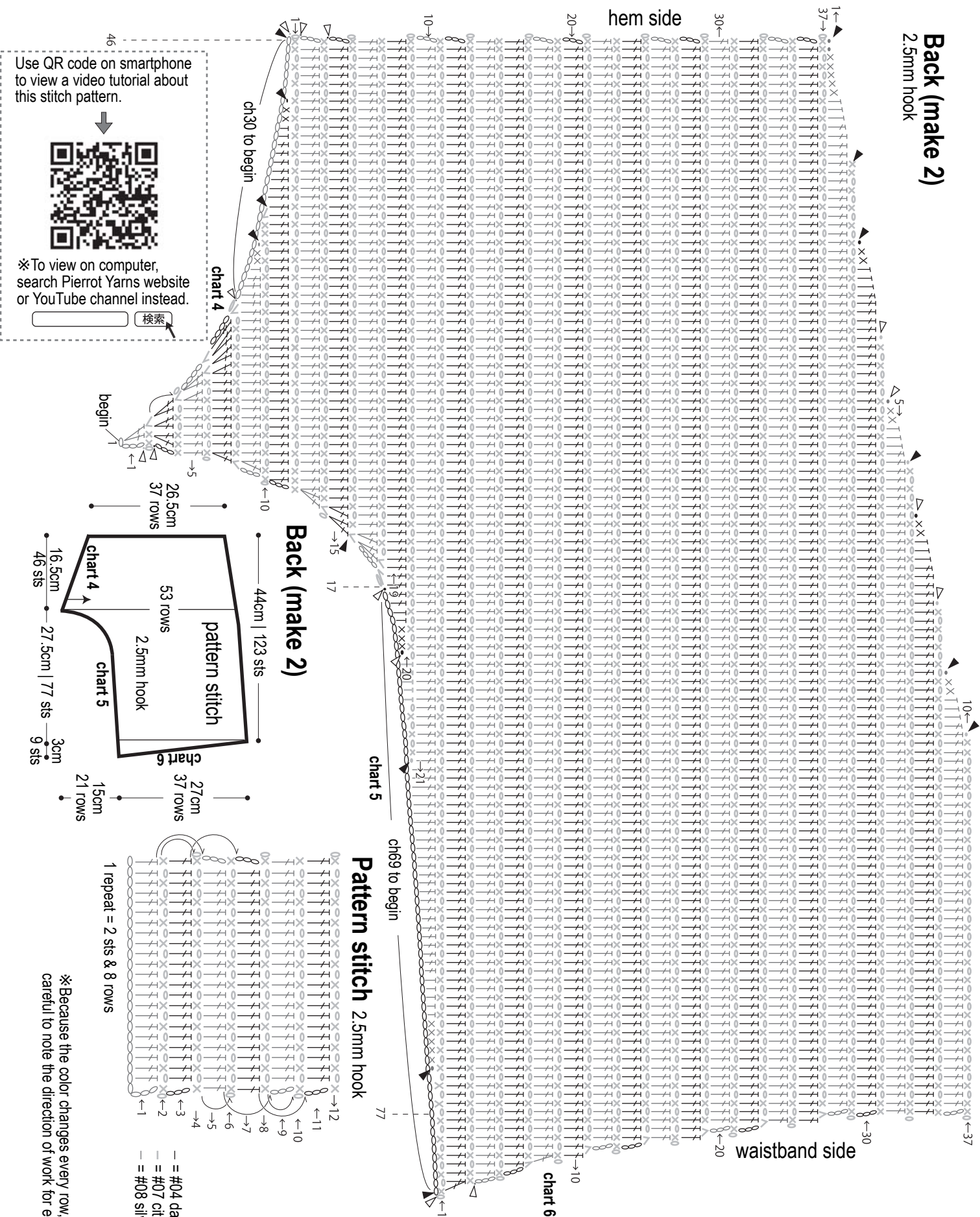
2.5mm hook, pattern stitch

※Because the direction of work is random, it is difficult to determine which is the right side. Make 2 identical front and back pieces.



Back (make 2)

2.5mm hook



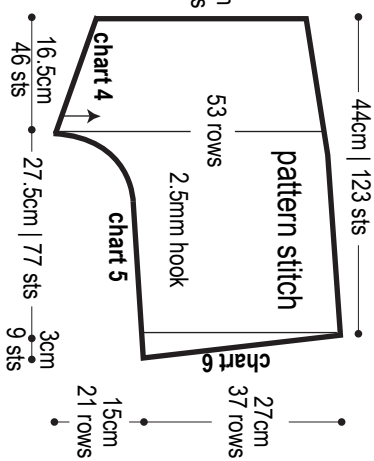
Use QR code on smartphone to view a video tutorial about this stitch pattern.



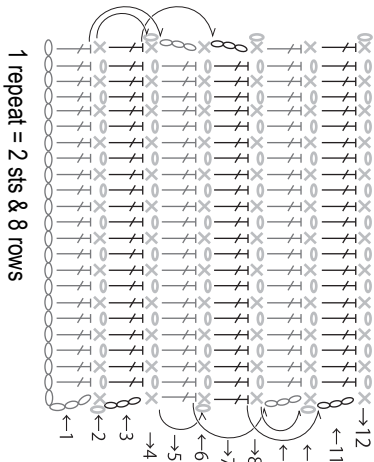
※ To view on computer, search Pierrot Yarns website or YouTube channel instead.

検索

Back (make 2)



Pattern stitch 2.5mm hook



- = #04 dark blue
- = #07 citron
- = #08 silver gray

※ Because the color changes every row, be careful to note the direction of work for each row.