

216ss-05 Type Lace Camisole



Suggested yarn:

- Pierrot Yarns Neox [60% ramie, 25% silk, 15% rayon; 112 yds/102m per 1.41 oz./40g skein]; color #04 glossy navy, 5 skeins [130g]
- Pierrot Yarns Le Cotton #50 [100% cotton; 246 yds/225m per 0.88 oz./25g skein]; color #17 silver gray, 3 skeins [60g]

Tools/Notions:

- 3.6mm (approx. US 5) knitting needles or size necessary to achieve gauge
- 2.0mm (US steel hook #4), 2.3mm (approx. US B) and 2.5mm (approx. US B or C) crochet hooks or sizes necessary to achieve gauge

Finished measurements:

- bust 86cm/33.86"
- cross back width 35cm/13.78"
- back length 58cm/22.83"

Gauge (10cm/4" square):

- pattern stitch A (with 3.6mm needles): 23 sts and 32 rows
- pattern stitch B (with 2.0mm hook): 33 sts and 13.5 rows
- pattern stitch B (with 2.3mm hook): 31.5 sts and 13.5 rows

Gauge may vary according to individual knitting style. Change needle size if necessary to achieve gauge. Alternatively, rework pattern with your own gauge measurements.

Summary

✳️**Note:** When using Le Cotton #50, use 2 strands of yarn held together.

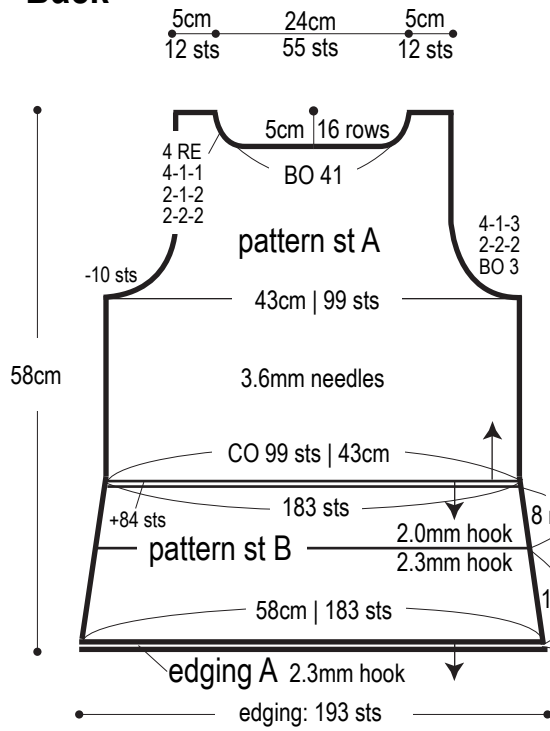
Body: With knitting needles, cast on with long-tail cast-on method. Work in pattern stitch A. Shape armhole and neckline by binding off stitches as indicated and by working decreases at edges as indicated. With crochet hook, begin working pattern stitch B from knitted cast-on edge downward.

Finishing: Seam shoulders with crochet slip stitch seam. Seam sides with chain seam (alternating chain st and slip st as needed to maintain pattern). Crochet edging A in the round along hem edge. Crochet edging B in the round along armholes and neckline.

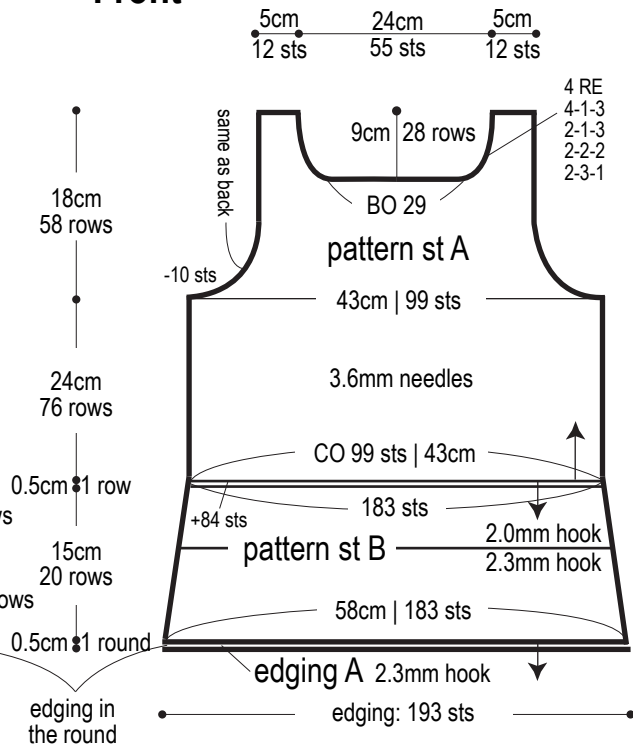
Abbreviations:

BO = bind off
ch = (crochet) chain stitch
CO = cast on
sc = single crochet (US)
RE = row(s) even
= rows-stitches-times

Back

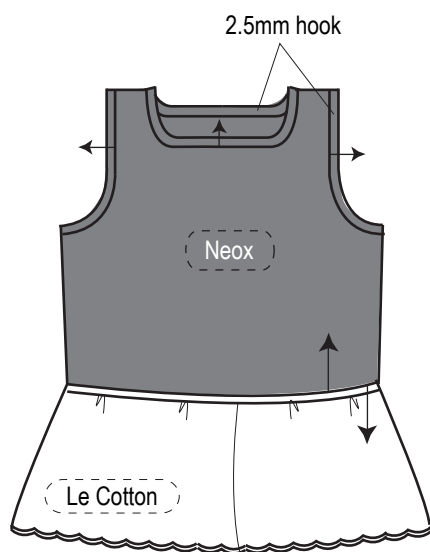


Front



※For crochet section (pattern st B), adjust gauge by changing hook size as indicated.

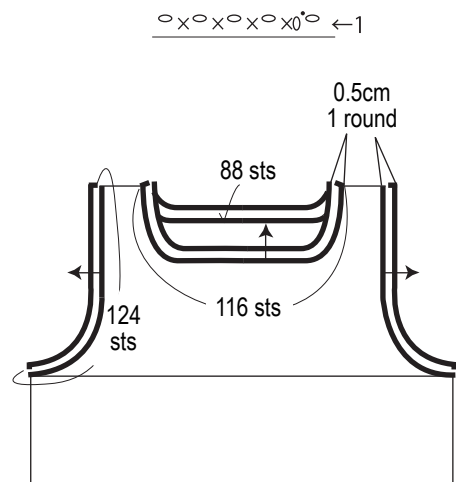
Finishing



Peplum will have a slight gather, as you increase 84 sts when beginning crochet section (pattern st B).

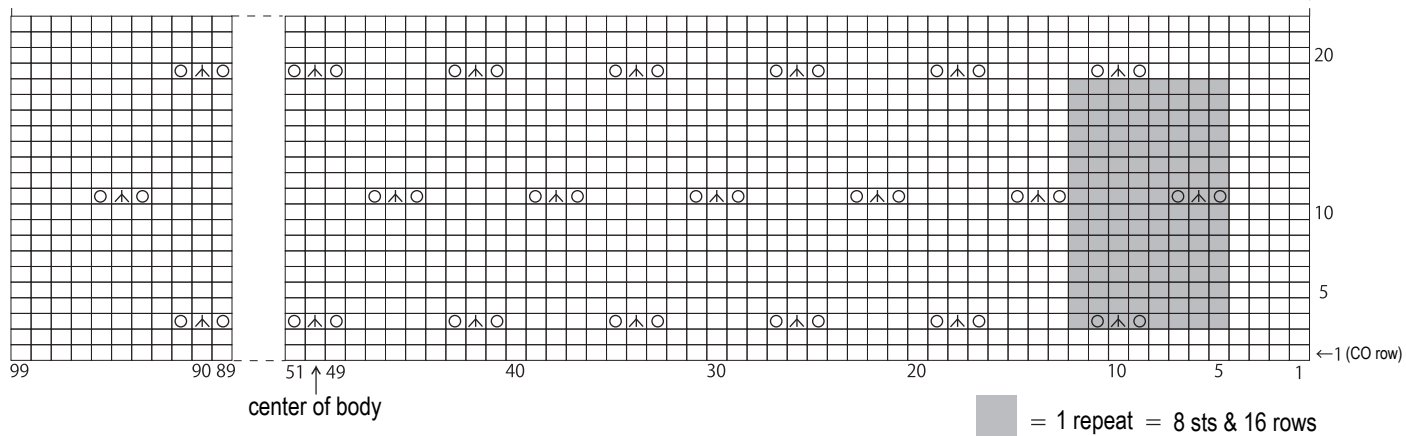
Edging B: armholes & neckline

2.5mm hook



Pattern stitch A Neox, 3.6mm needles

$\square = \square \mid \text{knit}$



Pattern stitch B 2 strands of Le Cotton #50, 2.0mm & 2.3mm hooks

edging A

