

216ss-24 Beach Dress



Suggested yarn:

- Pierrot Yarns New Shine Cotton [100% cotton; 148 yds/135m per 1.06 oz./30g skein]; color #29 coral pink, 14 skeins [420g]

Tools/Notions:

- 2.0mm (approx. US steel hook #4) and 2.3mm (approx. US B) crochet hooks or sizes necessary to achieve gauge

Finished measurements:

- length 69.6cm/27.40"
- width (excluding straps) 139.1cm/54.76"

Gauge (10cm/4" square):

- pattern stitch: 36.5 sts and 18.5 rows

Gauge may vary according to individual crochet style. Change hook size if necessary to achieve gauge. Alternatively, rework pattern with your own gauge measurements.

Summary

✳️**Note:** Like all Japanese patterns, stitch counts given here for foundation chains do not include any chain sts needed for turning posts.

Body of garment: Work foundation chain to begin, then work in pattern stitch.

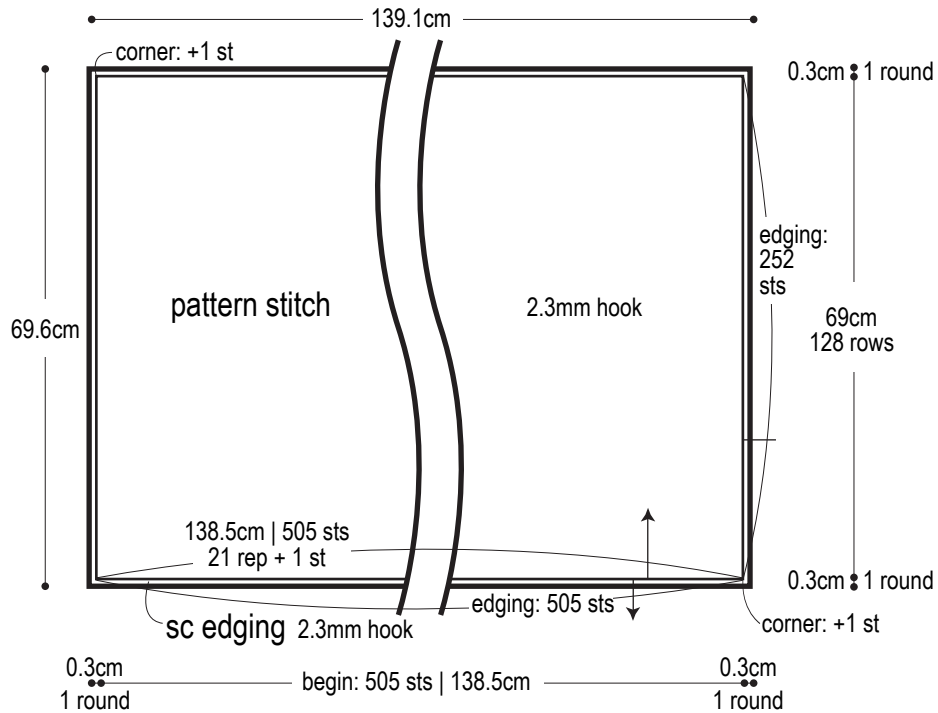
Finishing: Work sc edging in the round along outer edges of dress. Crochet 2 straps; fasten to dress where indicated.

Abbreviations:

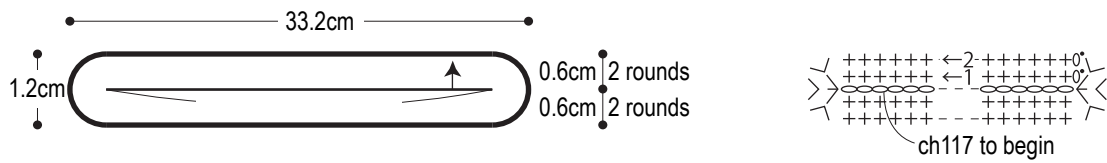
ch = chain

sc = single crochet (US)

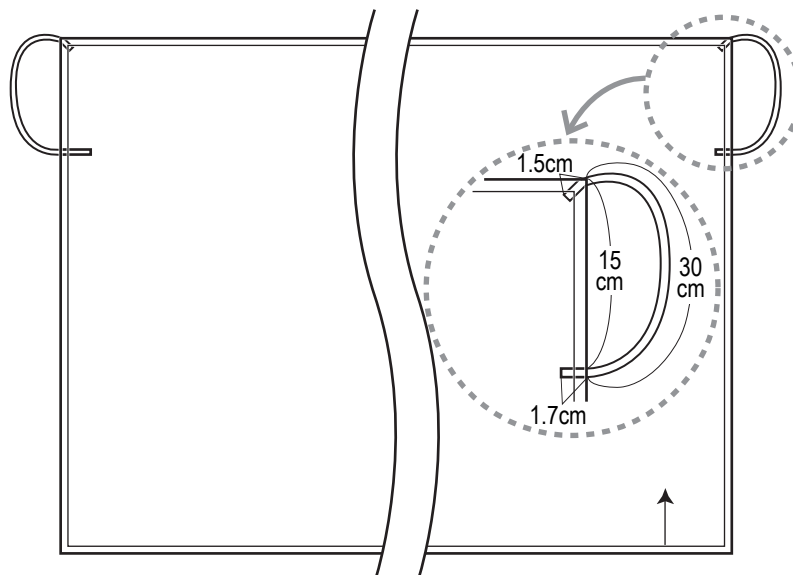
Body of dress



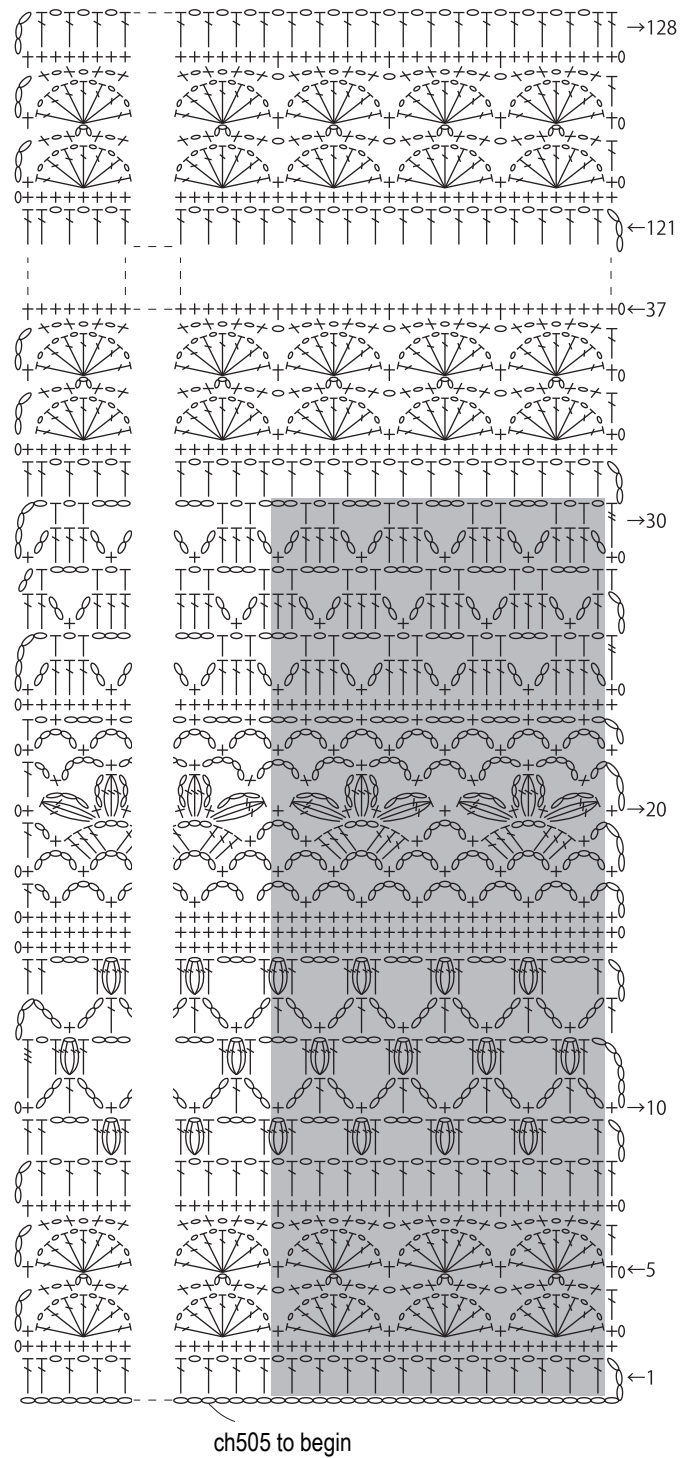
Strap (make 2) 2.0mm hook

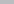


Finishing



Pattern stitch 2.3mm hook



 = 1 repeat = 24 sts and 30 rows