

Kororin Pouch



Suggested yarn:

- Pierrot Yarns Heat+ [100% polyester; 113 yds/103m per 1.41 oz./40g cone];
 - version A (knit): color #04 lemon yellow, 2 cones [65g]
 - version B (crochet): color #02 salmon, 3 cones [85g]

Tools/Notions:

- version A (knit):
 - 5.7mm (approx. US 9) knitting needles or size necessary to achieve gauge
- both versions:
 - 3.5mm (US E) crochet hook or size necessary to achieve gauge
 - 1 zipper (20cm/7.87") per pouch
 - cardboard (for blocking)
 - sewing thread in matching color
 - sewing needle

Finished measurements:

- width 8.5cm/3.35"
- length 15cm/5.91"
- height 8.5cm/3.35"

Gauge (10cm/4" square):

- single crochet (US) stitch: 28 sts and 34.5 rows
- reverse stockinette stitch: 19 sts and 26.5 rows

Gauge may vary according to individual crochet style. Change hook size if necessary to achieve gauge. Alternatively, rework pattern with your own gauge measurements.

Summary

✳️**Note:** Like all Japanese patterns, stitch counts given here for crochet foundation chains do not include any chain sts needed for turning posts.

Version A: With 2 strands of yarn held together, work crochet chain cast-on method. Continue in reverse stockinette stitch. Bind off on knit side. Place markers at sides where indicated to aid in folding pouch during finishing.

Version B: With one strand of yarn, work foundation chain to begin. Work in sc. Place markers at sides where indicated to aid in folding pouch during finishing.

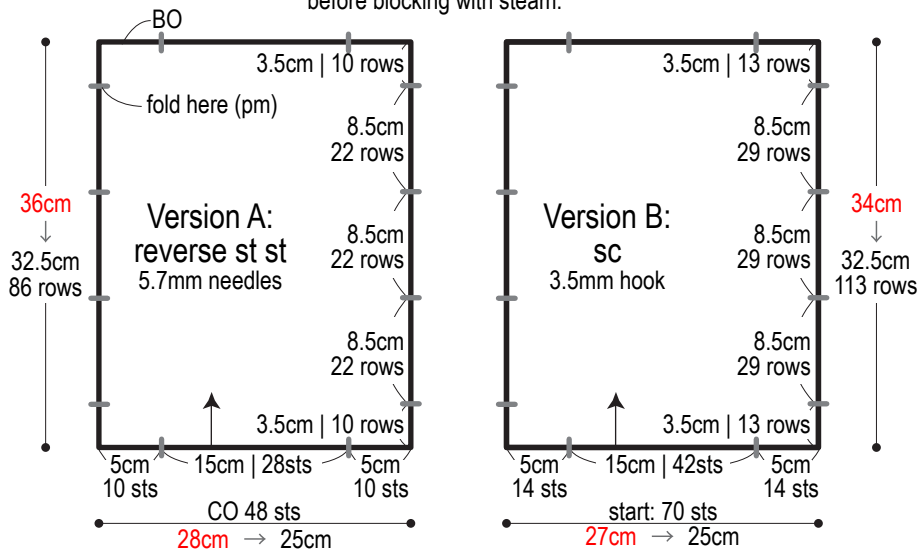
Finishing: With dry iron, block into shape from wrong side. Apply steam iron to cast-on and bind-off edges until they harden, then sew zipper in place. Create cardboard dummy (see finishing schematics) to aid in blocking. Insert cardboard dummy into pouch so that right side of fabric is facing out. Block from right side with steam iron. Finish ends of pouch by folding and seaming as indicated. Apply steam iron to right side again until fabric is stiffened.

Abbreviations:

BO = bind off
ch = chain
CO = cast on
pm = place marker
sc = single crochet (US)
st st = stockinette stitch

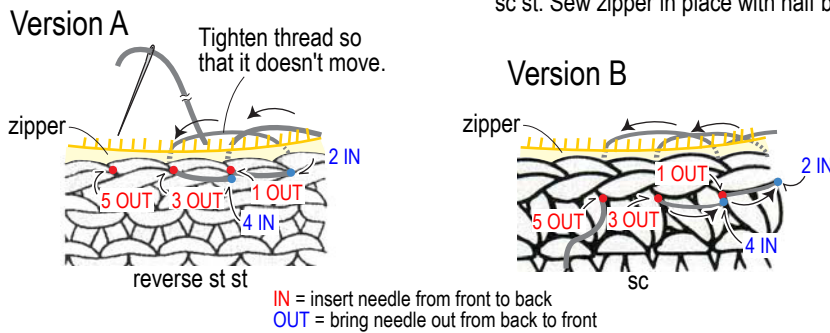
Body of pouch

※ Figures in red are measurements before blocking with steam.

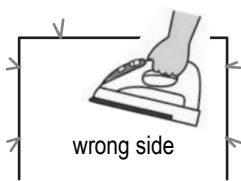


Half backstitch

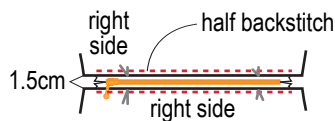
※ For version A, insert needle into each BO or CO st; for version B, insert needle into each sc st. Sew zipper in place with half backstitch.



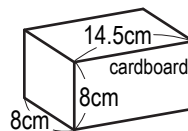
Finishing



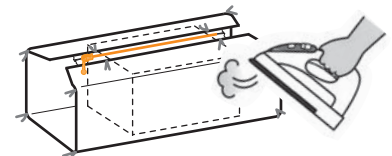
1) Block with dry iron on wrong side. (Do not use steam at this stage.)



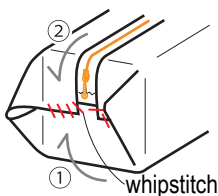
2) Apply steam iron to CO and BO rows until fabric is stiff. Sew zipper in place with half backstitch.



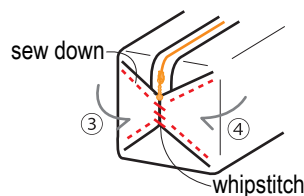
3) Make a cardboard dummy to aid in blocking.



4) Insert cardboard dummy into fabric tube. Block with steam iron.

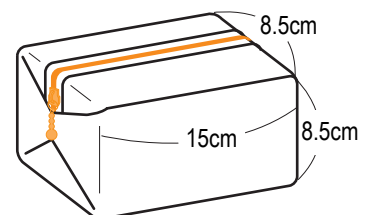


5) Fold ends, first ①, then ②, and seam in place.



6) Seam edges where folding ③ and ④ meet. Tack down ① and ② along dotted lines so that the flaps don't stick out.

Finished item



7) Apply steam iron to right side once again to stiffen fabric.