

614sh Valentine's Day Convertible Hat/Cowl



Suggested yarn:

- Pierrot Yarns Orange [100% merino wool; 175 yds/160m per 1.76 oz./50g skein]; color #04 red/brown, 1 skein [50g]
- Pierrot Yarns Macon [70% alpaca, 30% nylon; 80 yds/73m per 0.88 oz./25g skein]; color #25 dark brown, 2 skeins [50g]

Tools/Notions:

- 3.9mm (approx. US 6) and 4.5mm (US 7) circular knitting needles or sizes necessary to achieve gauge
- cable needle

Finished measurements:

- head circumference 53cm/20.87"
- For other measurements, please see schematics.

Gauge (10cm/4" square):

- stockinette stitch: 18.5 sts and 27 rounds
- pattern stitch: 18.5 sts and 27 rounds

Gauge may vary according to individual knitting style. Change needle size if necessary to achieve gauge. Alternatively, rework pattern with your own gauge measurements.

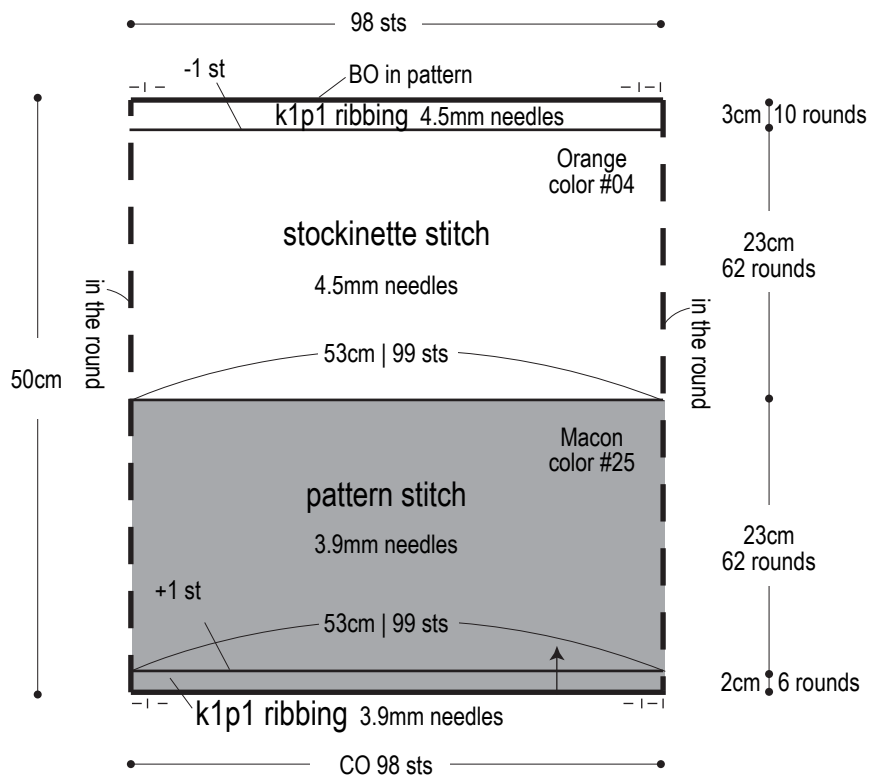
Summary

With Macon, cast on with long-tail cast-on method and join into the round. Work in k1p1 ribbing in the round, then continue in pattern stitch. Change to Orange, then work in stockinette stitch followed by k1p1 ribbing. Bind off in pattern.

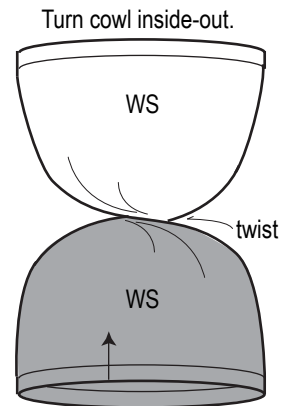
Abbreviations:

BO = bind off
CO = cast on
k = knit
p = purl
WS = wrong side

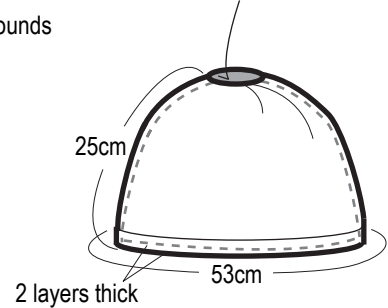
Cowl/hat schematic



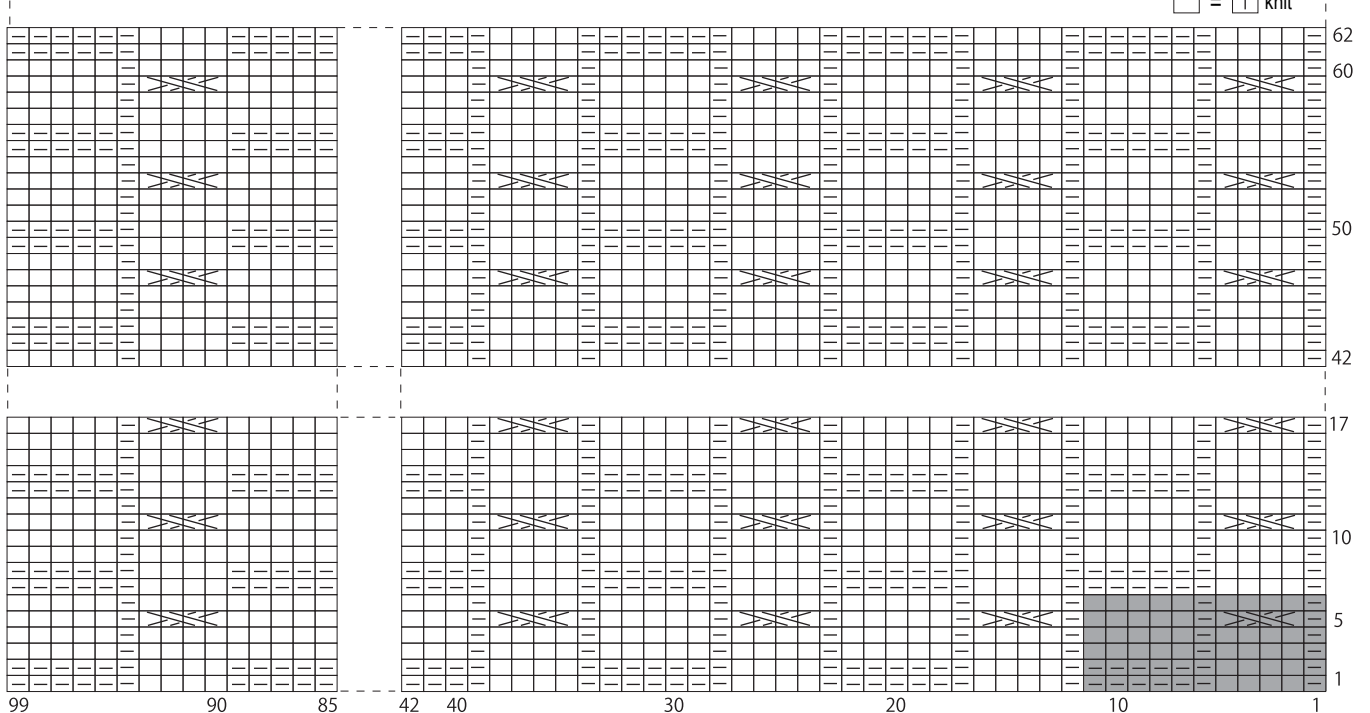
Finishing



By twisting cowl at center and pulling one half down over the other, you can convert it into a hat. Either RS or WS can be the public side.



Pattern stitch 3.9mm needles



C4F = C4F

$\text{1 repeat (11 sts \& 6 rounds)}$

※C4F: slip 2 stitches to cable needle and hold in front of work, k2, k2 from cable needle.