

215w-15 Down Tippet



Suggested yarn:

- Pierrot Yarns Pochette [50% merino wool, 50% cotton; 131yds/120m per 1.41oz/40g skein];
 - orange version: color #05 sweet orange, 4 skeins [155g]
 - green version: color #07 emerald green, 4 skeins [155g]
- Pierrot Yarns Lourdes [60% mohair, 40% Silk; 306yds/280m per 0.88oz/25g skein];
 - orange version: color #07 terra cotta, 2 skeins [40g]
 - green version: color #09 turquoise green, 2 skeins [40g]

Tools/Notions:

- 3.0mm (US 3) and 3.3mm (approx. US 4) knitting needles or sizes necessary to achieve gauge
- cable needle
- magnetic button clasp (18mm/0.71" diameter)
- thick cotton batting (46cm/18.11" x 80cm/31.50")
- adhesive interfacing (5cm/1.97" square)

Finished measurements:

- width 23cm/9.06"
- length 80cm/31.50"

Gauge (10cm/4" square):

- pattern stitch: 27 sts and 27 rows

Gauge may vary according to individual knitting style. Change needle size if necessary to achieve gauge. Alternatively, rework pattern with your own gauge measurements.

Summary

❖ **Note:** Work each tippet with 2 strands of yarn held together (1 strand of Pochette and 1 strand of Lourdes).

Tippet: Cast on with long-tail cast-on method. Work in k1p1 ribbing, pattern stitch, and then k1p1 ribbing again. Bind off in pattern. Make second piece identical to first.

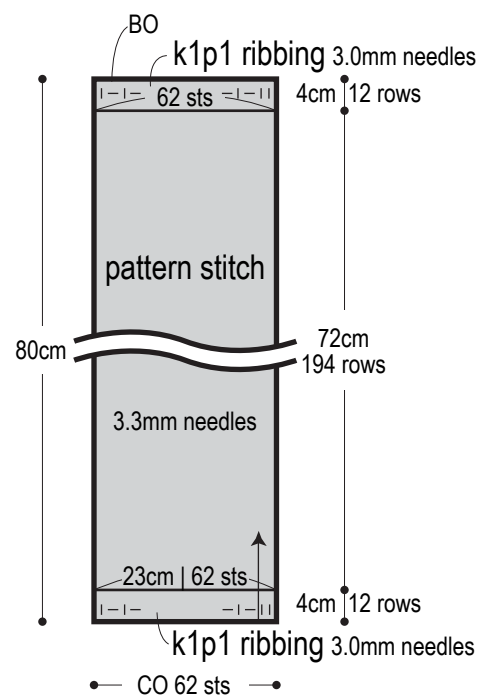
Finishing: With right sides facing each other, seam two pieces together with mattress stitch. Turn right side out, then insert batting and interfacing. Sew magnetic clasps to tippet from right side. Fold to outside; seam cast-on edge to bind-off edge with whipstitch. Seam sides with mattress stitch.

Abbreviations:

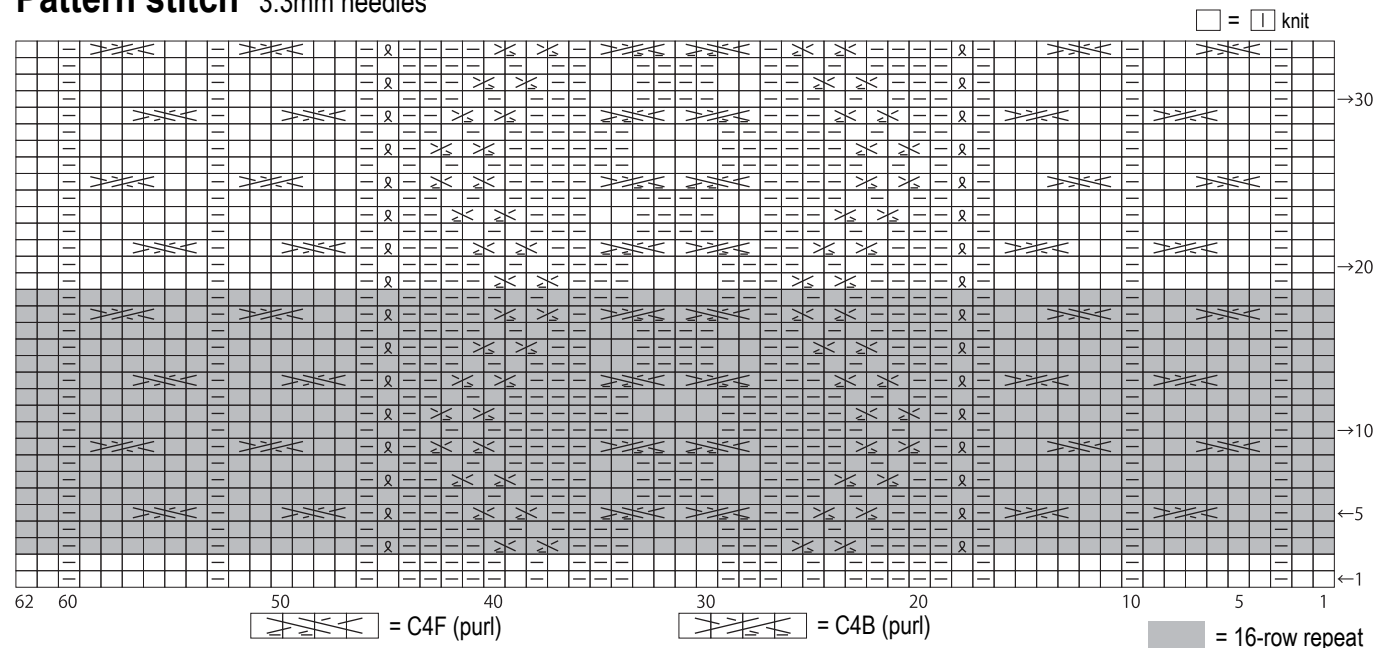
BO = bind off CO = cast on k = knit stitch p = purl stitch RS = right side WS = wrong side

Tippet (make 2)

1 strand of each yarn held together



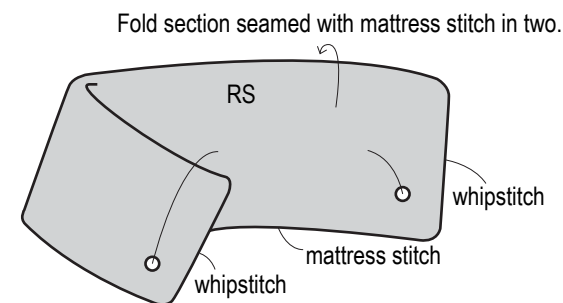
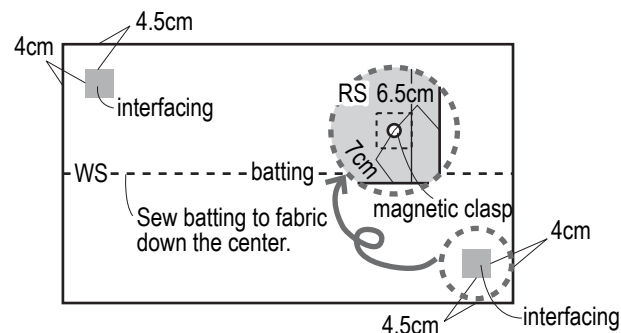
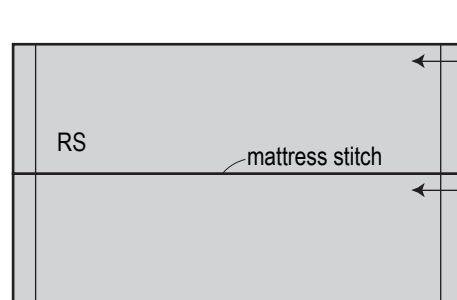
Pattern stitch 3.3mm needles



Slip 2 sts to cable needle & hold in front; p2, k2 from cable needle.

Slip 2 sts to cable needle & hold in front; k2, p2 from cable needle.

Finishing



※In order to ensure that batting doesn't move around inside the tippet, sew together with whipstitch and mattress stitch.