

# 388mf Brioché Rib Stitch Long Muffler



## Suggested yarn:

- Pierrot Yarns Oliver Nep [85% acrylic, 10% wool, 5% polyester; 55 yds/50m per 1.41 oz./40g skein];
  - version A: color #04 wine, 8 skeins [320g]
  - version B: color #06 olive, 8 skeins [320g]

## Tools/Notions:

- 7.0mm (no close US equivalent) knitting needles or size necessary to achieve gauge

## Finished measurements:

- width 28cm/11.02"
- length 180cm/70.87"

## Gauge (10cm/4" square):

- English rib stitch: 11.5 sts and 28 rows

*Gauge may vary according to individual knitting style. Change needle size if necessary to achieve gauge. Alternatively, rework pattern with your own gauge measurements.*

## Summary

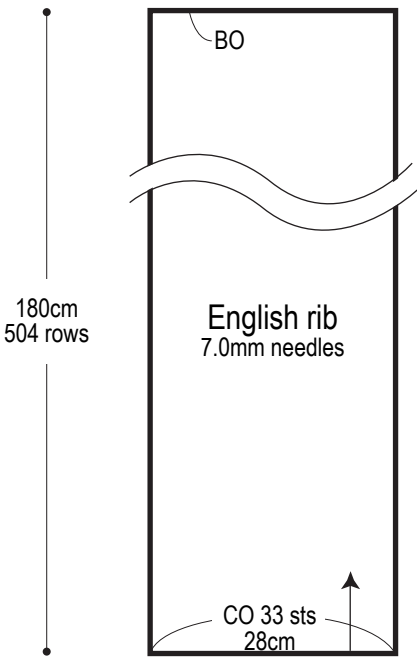
**Scarf:** Cast on with long-tail cast-on method and work in English rib stitch. Slip stitch at beginning of row to create a nice selvedge. Bind off in pattern. (If you like, you can use all 8 skeins of yarn until you run out. Simply be careful to leave 1.5m/1.64 yds. for bind off.)

**Finishing:** (Optional) Sew decorative tag, label, or badge to end of scarf.

## Abbreviations:

BO = bind off  
CO = cast on  
k = knit stitch  
p = purl stitch

Scarf schematic

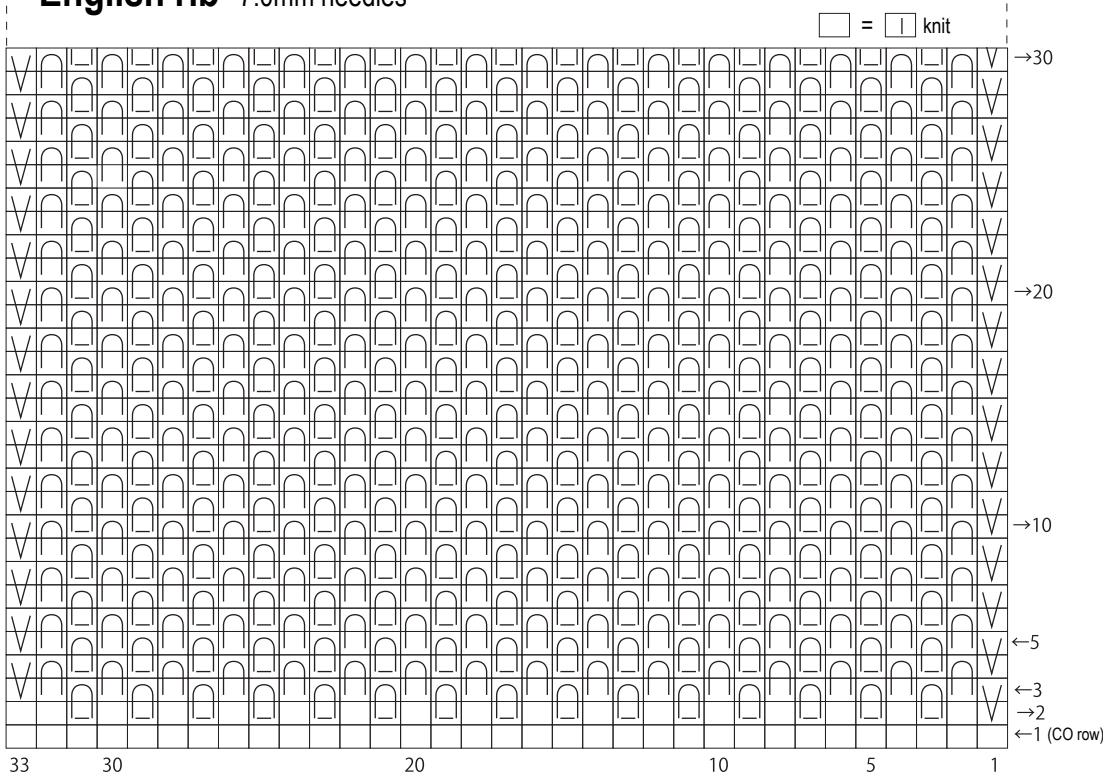





※English rib video tutorial※



※Finished length may vary depending on how tightly or loosely you knit into row below (as this alters stitch length).

English rib 7.0mm needles



 = k in stitch below     = p in stitch below     = slip stitch