

215w-13 Basketweave Muffler



Suggested yarn:

- Pierrot Yarns Lady Wool [99% wool, 1% polyester; 98 yds/90m per 1.76 oz./50g skein]; color #02 pale pink, 8 skeins [370g]

Tools/Notions:

- 4.2mm (approx. US 6) and 4.8mm (approx. US 8) knitting needles or sizes necessary to achieve gauge
- cable needle

Finished measurements:

- width 18cm/7.09"
- length 200cm/78.74"

Gauge (10cm/4" square):

- k2p2 ribbing: 30.5 sts and 26.5 rows
- pattern stitch (basketweave): 35.5 sts and 27.5 rows

Gauge may vary according to individual knitting style. Change needle size if necessary to achieve gauge. Alternatively, rework pattern with your own gauge measurements.

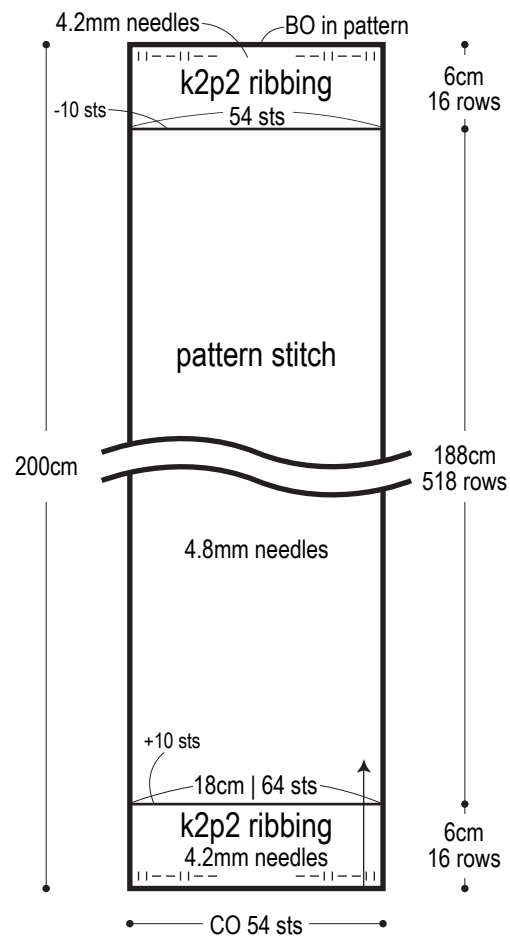
Summary

Cast on with long-tail cast-on method. Work in k2p2 ribbing, then continue in pattern stitch. Finish by working k2p2 ribbing, then bind off in pattern.

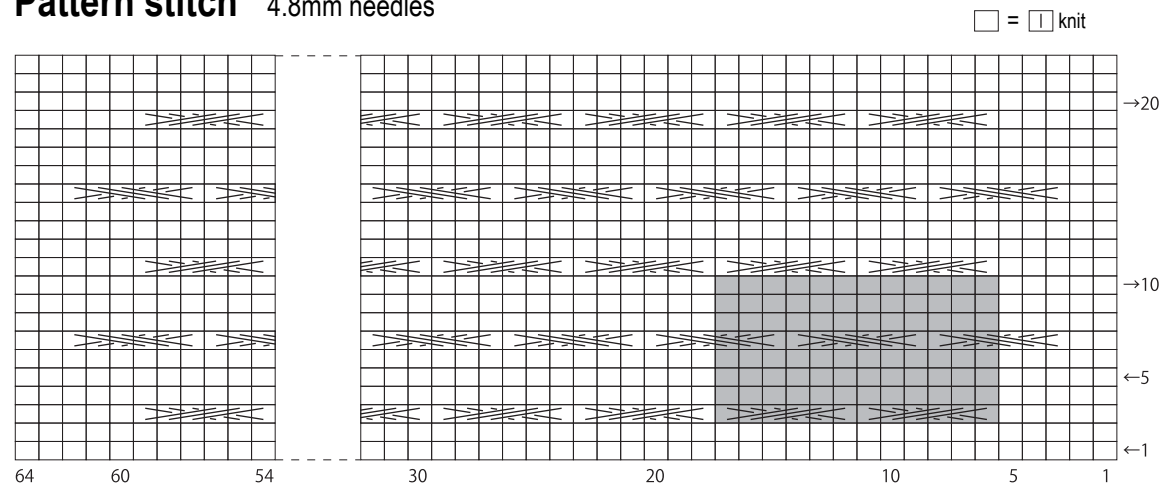
Abbreviations:

BO = bind off
CO = cast on
k = knit stitch
p = purl stitch

Schematic



Pattern stitch 4.8mm needles



☞ = C6F

(Slip 3 sts to cable needle and hold in front; k3, k3 from cable needle.)

☞ = C6B

(Slip 3 sts to cable needle and hold in back; k3, k3 from cable needle.)

■ = 1 repeat (12 sts & 8 rows)