

215w-03 Waffle Dolman Pullover



Suggested yarn:

- Pierrot Yarns Soft Merino Fingering [100% merino wool; 183 yds/167m per 1.41 oz./40g skein]; color #16 gray, 10 skeins [385g]
- Pierrot Yarns Silk Rosa [75% mohair, 25% silk; 213 yds/195m per 0.88 oz./25g skein]; color #13 storm gray, 8 skeins [185g]

Tools/Notions:

- 4.0mm (US G) crochet hook or size necessary to achieve gauge
- 3.9mm (approx. US 6) knitting needles or size necessary to achieve gauge

Finished measurements:

- center back neck-to-cuff 53.5cm/21.06"
- back length 56cm/22.05"

Gauge (10cm/4" square):

- waffle stitch: 18 sts and 12 rows
- k1p1 ribbing: 22 sts and 30 rows

Gauge may vary according to individual crochet style. Change hook size if necessary to achieve gauge. Alternatively, rework pattern with your own gauge measurements.

Summary

❖**Note:** Like all Japanese patterns, stitch counts given here for foundation chains do **not** include any chain sts needed for turning posts.

Back: Work foundation chain to begin. Work stitches of first row into bottom loop and front loop of chain. Crochet in pattern stitch (waffle stitch), increasing at sides as indicated. Work cuff section even (that is, no increasing or decreasing). Then continue top of sweater with decreases as indicated.

Right front: Begin as for back. Crochet in pattern stitch, increasing and decreasing as indicated. Reverse shaping for left front.

Finishing: Seam shoulders with chain seam (alternating chain stitch and slip stitch as needed to maintain pattern). Pick up stitch around cuff; knit cuff edging in k1p1 ribbing. Bind off in pattern. Seam sleeve undersides with chain seam (except for knit sections, where you should use mattress stitch). For collar and front edging, knit a strip of 19-stitch-wide k1p1 ribbing for as many rows as needed. Using mattress stitch, seam this strip of ribbing to front edges and collar as shown in finishing schematic.

Abbreviations:

bp = back post ch = chain dc = double crochet (US) fp = front post k = knit stitch p = purl stitch PU = pick up sc = single crochet (US)

Diagram illustrating the waffle stitch pattern for the hat, showing dimensions and stitch counts:

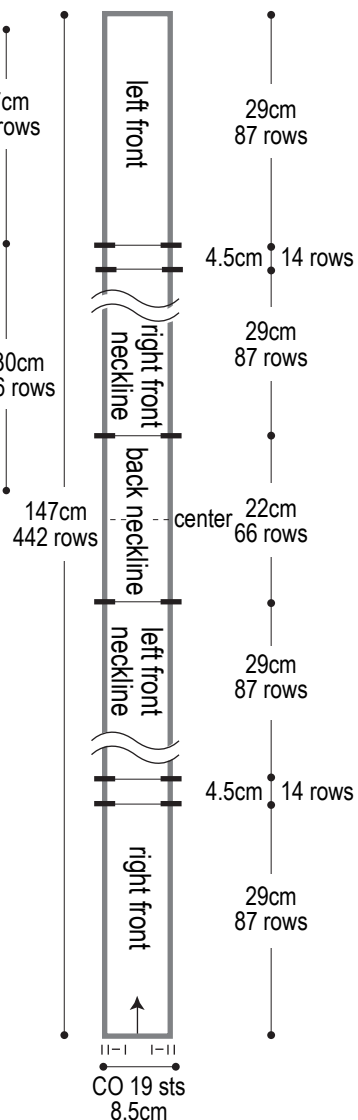
- Top edge: 36.5cm | 65 sts
- Bottom edge: 47cm | 85 sts
- Side edges: 56cm
- Stitch counts: 95cm | 171 sts
- Stitch pattern: waffle stitch
- Hook size: 4.0mm hook
- Charts: chart 1, chart 2, chart 3
- Stitch adjustments: +65 sts, +43 sts
- Starting instruction: ch85 to begin

※Entire garment yarn held together

Diagram of the front of a garment. Dimensions and construction details include:

- Top width: 36.5cm | 65 sts
- Top right corner: 1cm 7cm, 2 sts 14 sts
- Left side: 23cm 28 rows, 10cm 12 rows, 23cm 28 rows
- Right side: 27cm 32 rows, 30cm 36 rows
- Bottom width: 21cm | 38 sts
- Center: 45cm | 81 sts
- Stitch pattern: waffle stitch
- Charts: chart 4, chart 5
- Notes: (BO 37 sts), same as back, +43 sts, 4.0mm hook
- Legend: ● ch38 to begin ●

k1p1 ribbing, 3.9mm needles



Finishing

back neckline: stitches-to-rows mattress stitch

chain seam

mattress stitch

28 rows

left front

5 rows (leave unseamed)

cross at front

35 rows

right front

mattress stitch

6cm 18 rows

20cm 44 sts

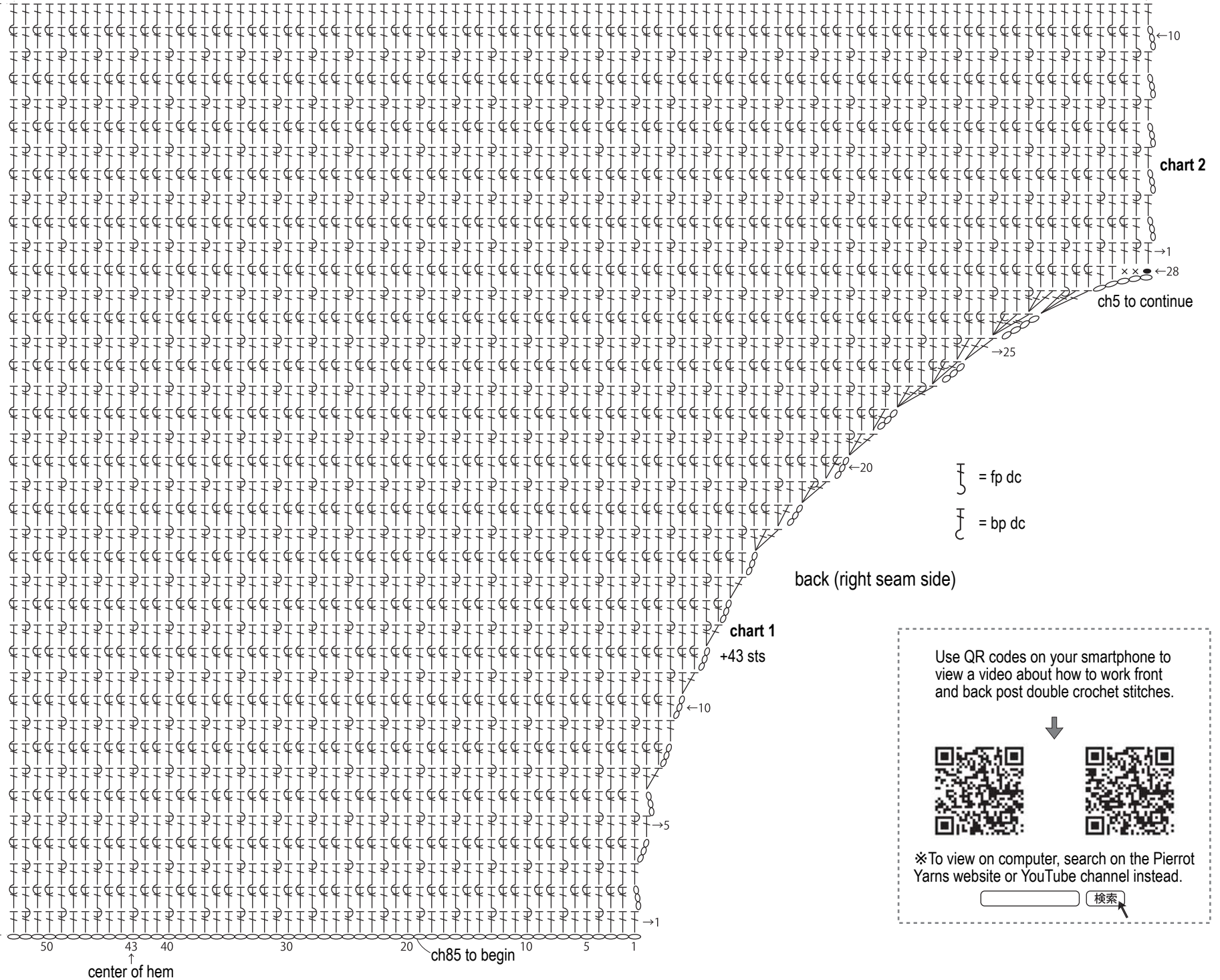
k1p1 ribbing 3.9mm needles

mattress stitch

chain seam

Pick up stitches from cuff, joining to shoulder, and work k1p1 ribbing.

Back 4.0mm hook



Use QR codes on your smartphone to view a video about how to work front and back post double crochet stitches.



※To view on computer, search on the Pierrot Yarns website or YouTube channel instead.

検索

center of back neckline

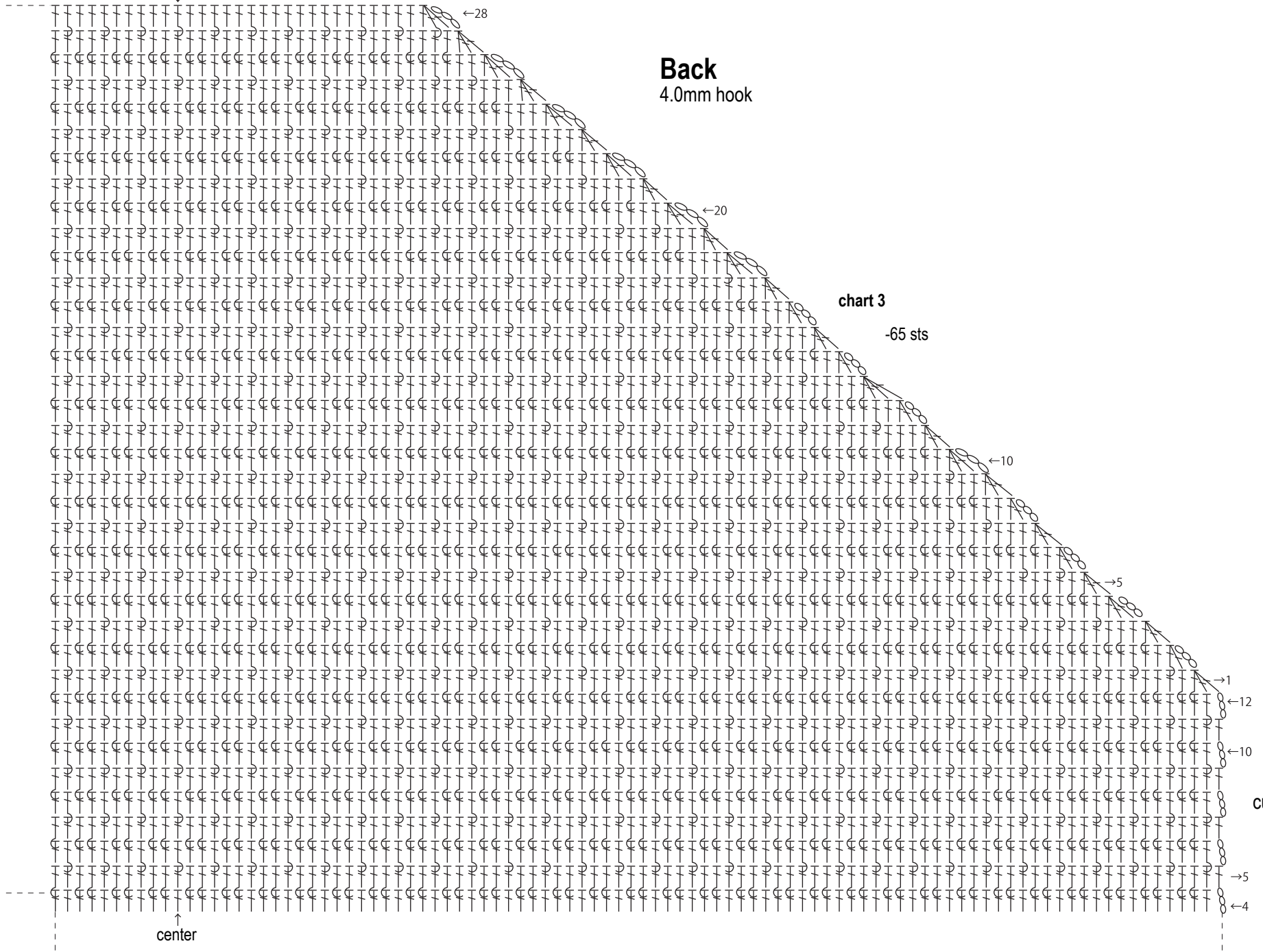
Back
4.0mm hook

chart 3

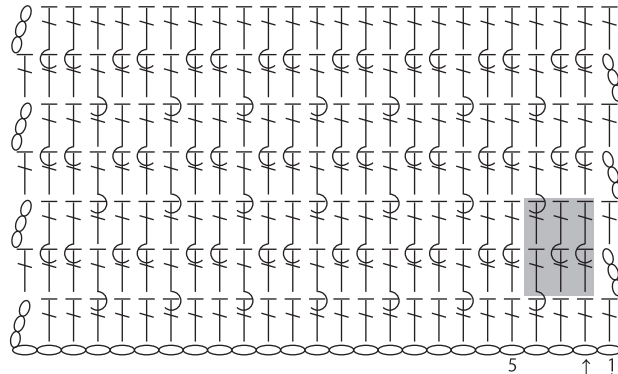
-65 sts

cuff

center



Pattern stitch 4.0mm hook



start back,
left front

chart 5

-65 sts

10←

5→

1→

12←

10←

cuff

5→

1→

81 sts

2 sts

28←

←32

←30

24←

20←

Right front
4.0mm hook

front neckline

chart 4

←20

-14 sts

←10

5→

→1

←36

→35

→31

←30

→29