

# 215aw-17 Containers



## Suggested yarn:

- Pierrot Yarns Heat+ [100% polyester; 113yds/103m per 1.41oz/40g cone];
  - version A:
    - color #07 salvia blue, 1 cone [30g]
    - color #08 dark gray, 3 cones [90g]
  - version B:
    - color #01 wine pink, 1 cone [25g]
    - color #05 dark cyan, 3 cones [95g]

## Tools/Notions:

- 3.0mm (US C or D) crochet hook or size necessary to achieve gauge
- stiff cardboard or interfacing

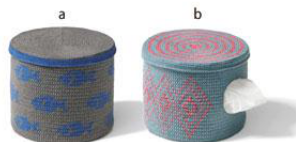
## Finished measurements:

- Please see finishing schematics.

## Gauge (10cm/4" square):

- No gauge is provided in the original pattern. Use hook size necessary to achieve firm fabric.

*Gauge may vary according to individual crochet style. Change hook size if necessary to achieve gauge. Alternatively, rework pattern with your own gauge measurements.*



## Summary

✳️**Note:** Like all Japanese patterns, stitch counts given here for foundation chains do **not** include any chain sts needed for turning posts.

**Bottom:** Work magic ring to begin, then work sc in the round, increasing as indicated.

**Sides:** Work foundation chain to begin, then work in pattern stitch for version A (multi-container), work sc colorwork for version B (tissue container). For sc colorwork, carry unused color along work by working current color around unused strand. Embroider sides as shown.

**Lid:** Work magic ring to begin, then work sc in the round, increasing as indicated. Continue to lip (side) of lid. Work colors as indicated in chart.

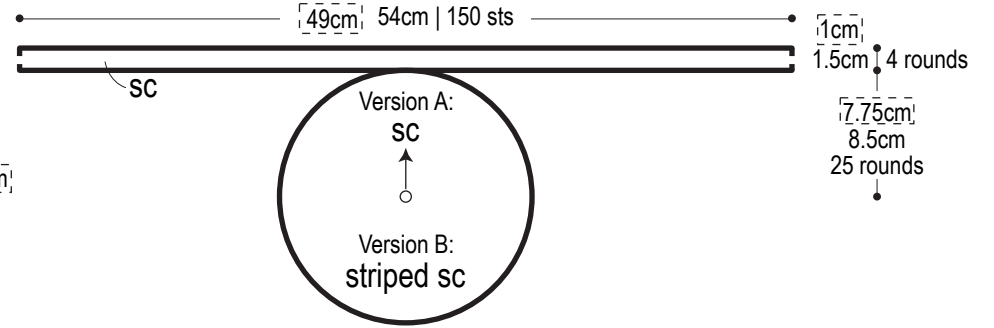
**Finishing:** Create rough cardboard mockup of container to use to aid blocking process. Block bottom, sides, and underside of lid with dry iron. With wrong sides facing each other, form sides into cylinder shape and seam ends with whipstitch. Seam bottom and sides together with whipstitch. Insert cardboard mockup into container, then block from outside with steam iron. For version B (tissue container), cut out circle as indicated in finishing schematic. Then block cut-out edges with iron to finish edges neatly.

## Abbreviations:

ch = chain      m = magic ring/circle      sc = single crochet (US)

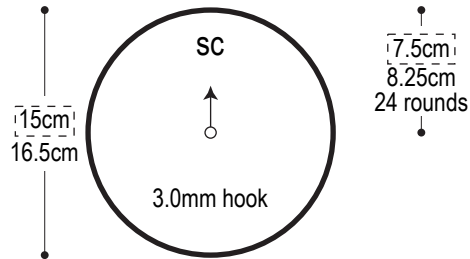
**Lid** 3.0mm hook

Version A  
Version B } 1 each



**Bottom**

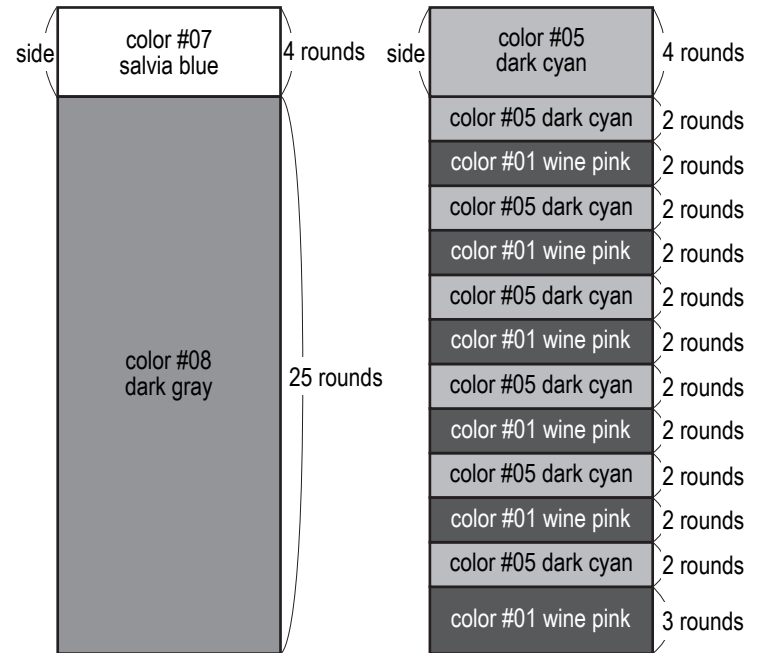
Version A: color #8  
Version B: color #5



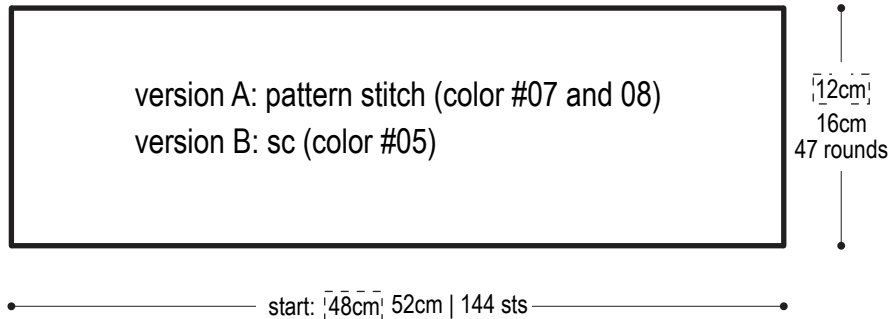
**Lid color sequence**

**Version A**

**Version B**



**Sides** 3.0mm hook



**Version A**

■ = color #07 salvia blue

■ = color #08 dark gray

**Version B**

■ = color #01 wine pink

■ = color #05 dark cyan

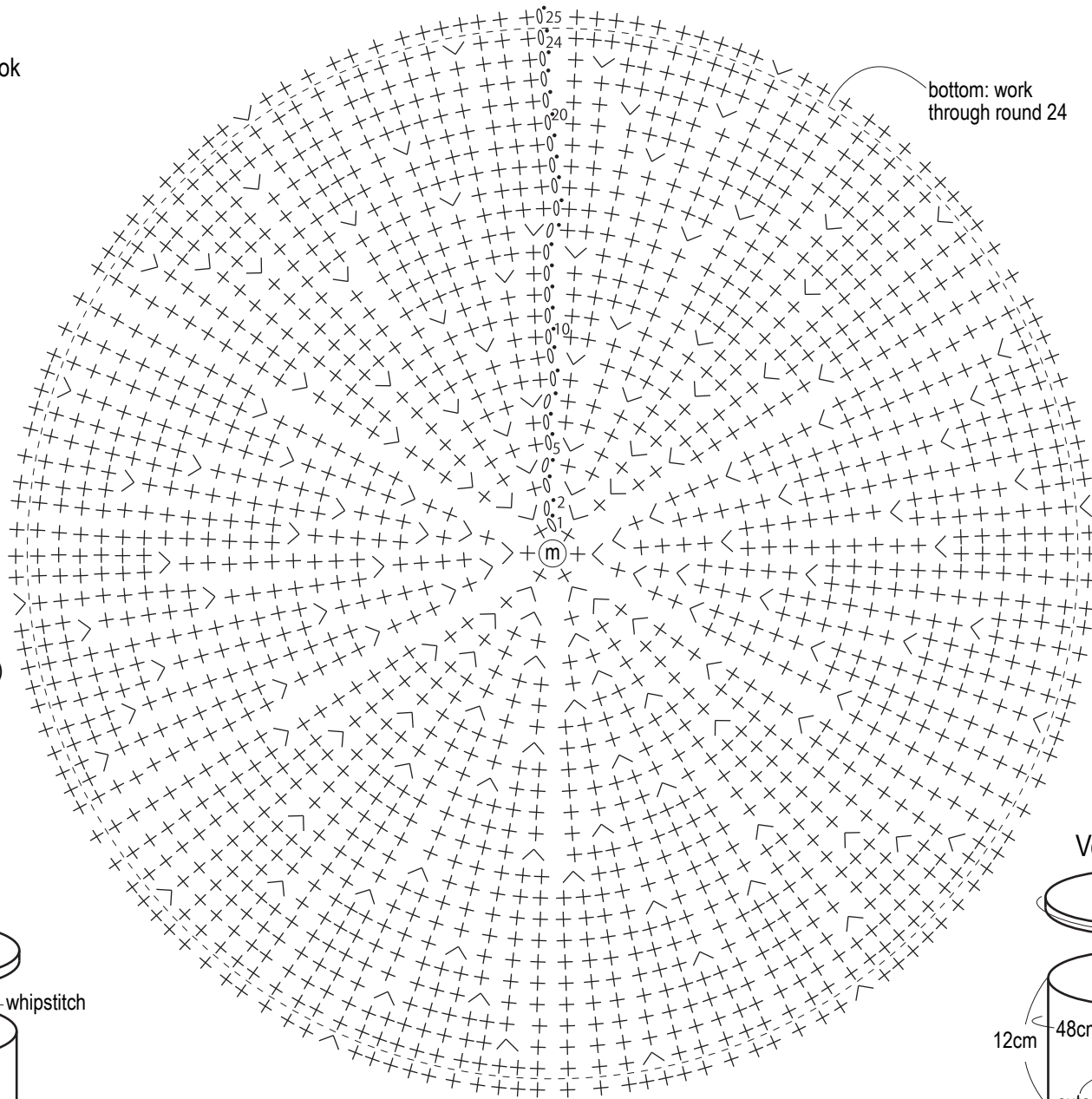
※ [dashed box] = measurements after blocking with iron  
(lack of outline = measurements before blocking with iron)

# Bottom & lid 3.0mm hook

round no.	stitch count
24	144
23	138
22	132
21	126
20	120
19	114
18	108
17	102
16	96
15	90
14	84
13	78
12	72
11	66
10	60
9	54
8	48
7	42
6	36
5	30
4	24
3	18
2	12
1	6

+6 sts per round

(Work into magic ring.)



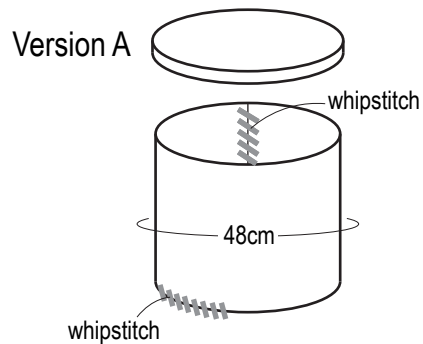
# Lid

round no.	stitch count
25	150
24	144
23	138
22	132
21	126
20	120
19	114
18	108
17	102
16	96
15	90
14	84
13	78
12	72
11	66
10	60
9	54
8	48
7	42
6	36
5	30
4	24
3	18
2	12
1	6

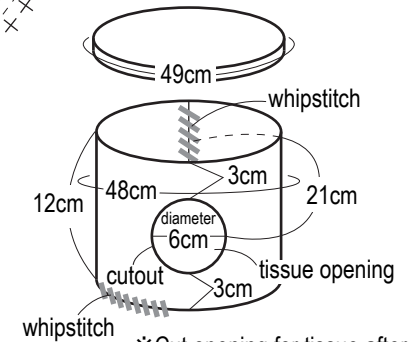
+6 sts per round

(Work into magic ring.)

## Finishing



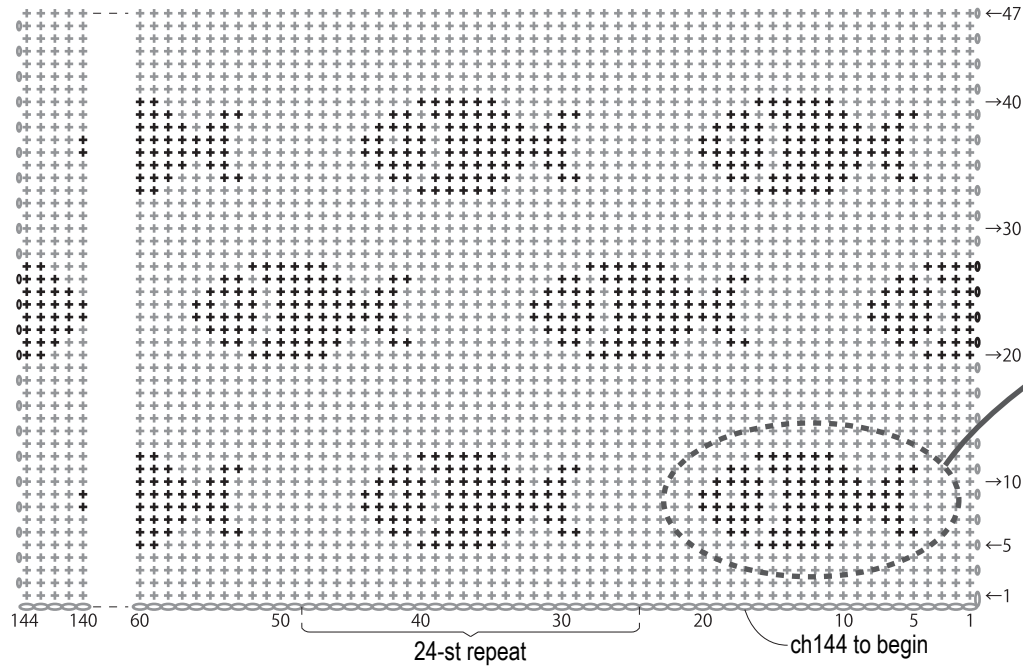
## Version B



※Cut opening for tissue after dry blocking with iron. After cutting hole, iron cut-out edges to finish neatly.

Version A

Sides 3.0mm hook



Color key for sides

Version A

Version B

■ = color #07 salvia blue

■ = color #01 wine pink

■ = color #08 dark gray

■ = color #05 dark cyan

Version B

front center

cross-stitch (color #01)

