

538sn Unisex Jyunmou Snood



Suggested yarn:

- Pierrot Yarns Junmo Gokubuto 2 [100% wool; 57 yds/52m per 1.41 oz./40g skein]; color #107 storm gray, 6 skeins [220g]

Tools/Notions:

- 5.7mm (approx. US 9) knitting needles or size necessary to achieve gauge
- darning needle

Finished measurements:

- height 42cm/16.54"
- circumference 70cm/27.56"

Gauge (10cm/4" square):

- pattern stitch: 17.5 sts and 24 rows

Gauge may vary according to individual knitting style. Change needle size if necessary to achieve gauge. Alternatively, rework pattern with your own gauge measurements.

Summary

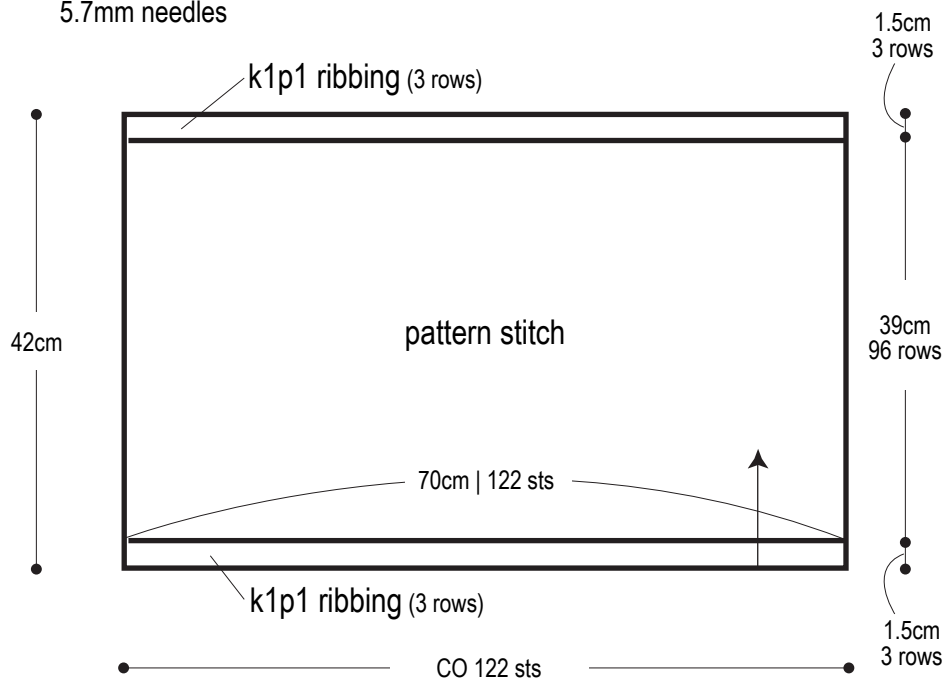
Cast on with long-tail cast-on method. Work in k1p1 ribbing, then pattern stitch, then k1p1 ribbing again. Bind off in pattern. Seam sides together with mattress stitch.

Abbreviations:

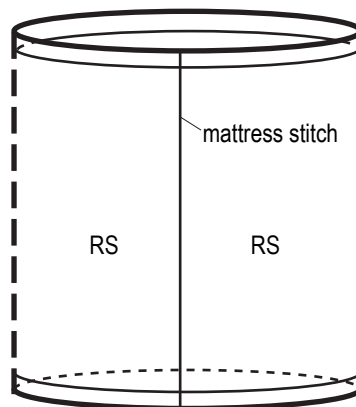
BO = bind off
CO = cast on
k = knit
p = purl
RS = right side
WS = wrong side

Snood schematic

5.7mm needles

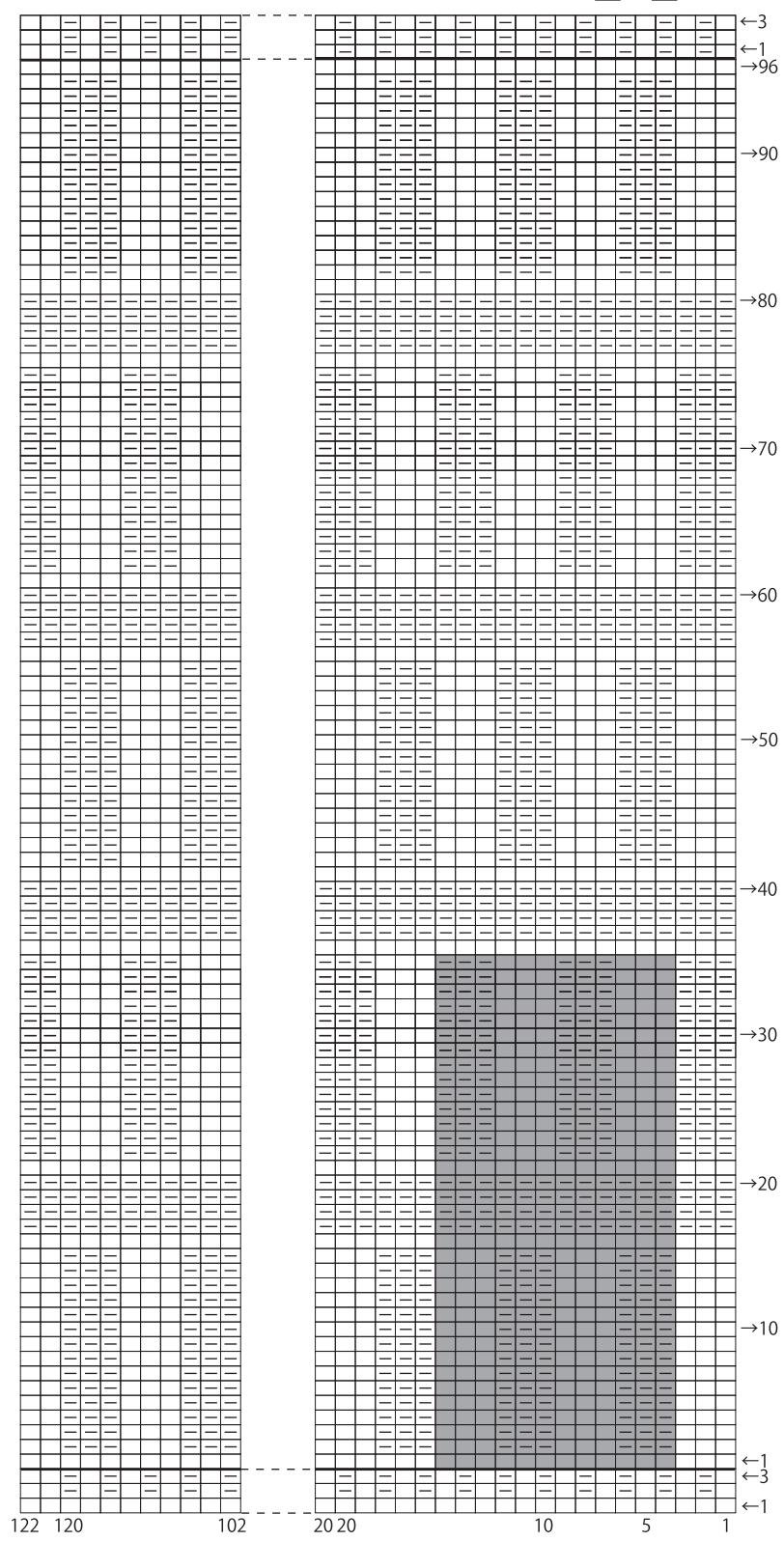


Finishing



Pattern stitch 5.7mm needles

□ = □ knit



■ = 1 pattern repeat
(12 sts & 40 rows)