

23-16 V-neck Sweater



Suggested yarn:

- Pierrot Yarns Colorful Bouclé [40% rayon, 30% linen, 25% silk, 5% nylon; 131 yds/120m per 1.41 oz./40g skein]; color #631, 8 skeins [320g]

Tools/Notions:

- 3.3mm (approx. US 4) knitting needles or size necessary to achieve gauge
- 2.0mm (US steel hook #4) crochet hook or size necessary to achieve gauge

Finished measurements:

- bust 94cm/37.01"
- cross back width 35cm/13.78"
- back length 54cm/21.26"
- sleeve length 24cm/9.45"

Gauge (10cm/4" square):

- pattern stitches A & B: 31 sts and 36 rows

Gauge may vary according to individual knitting style. Change needle size if necessary to achieve gauge. Alternatively, rework pattern with your own gauge measurements.

Summary

Back: Cast on with crochet chain cast-on method and begin working in pattern stitch A. Shape shoulders with short rows. Bind off stitches for neckline.

Front: Cast on as for back and begin working in pattern stitches A and B. Shape neckline, working in pattern stitches A and C, decreasing according to chart.

Finishing: Seam shoulders with three-needle bind-off method. Seam sides and sleeve undersides with mattress stitch. To help prevent the neckline from stretching, work slip stitch into stitches indicated on chart from wrong side. Seam sleeves to body with slip stitch seam.

Abbreviations:

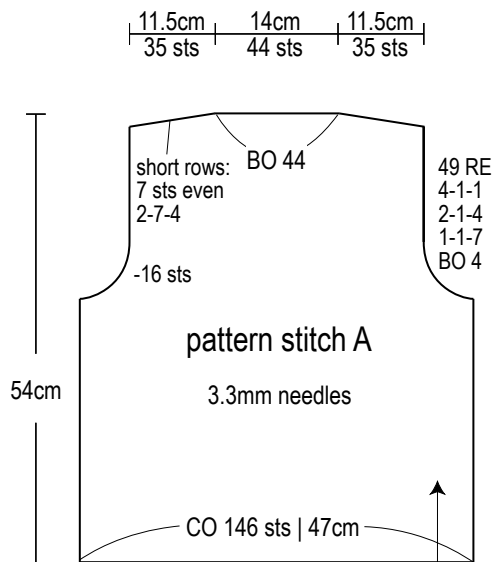
BO = bind off

CO = cast on

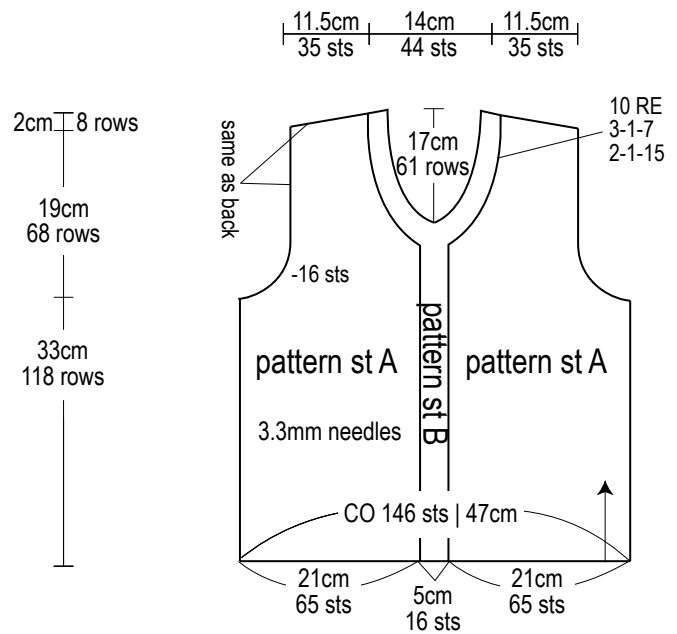
RE = row(s) even

#-#-# = rows-stitches-times

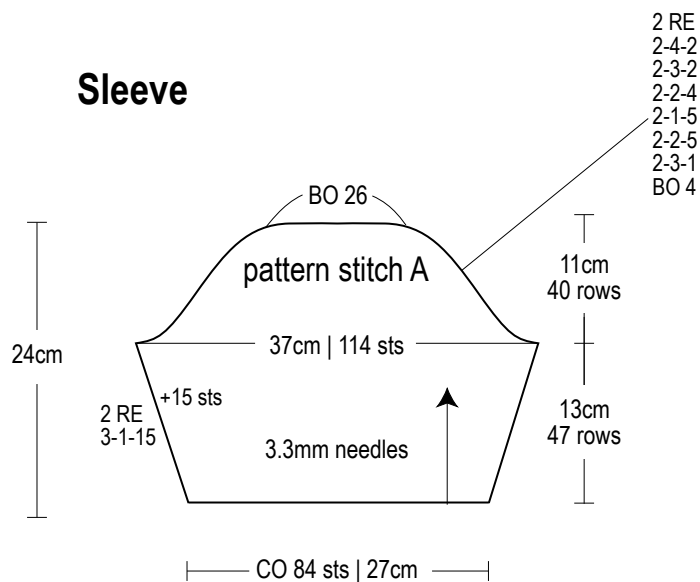
Back



Front

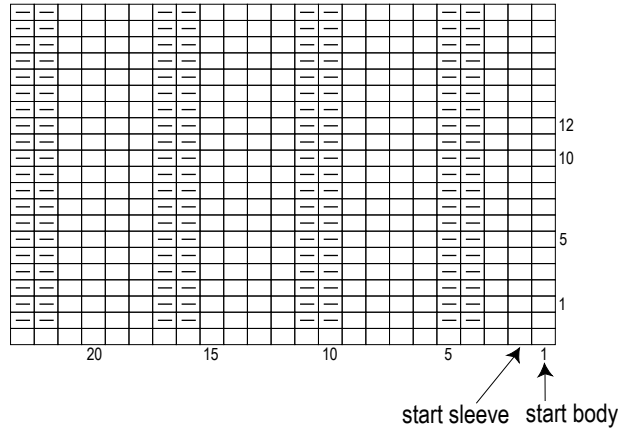


Sleeve



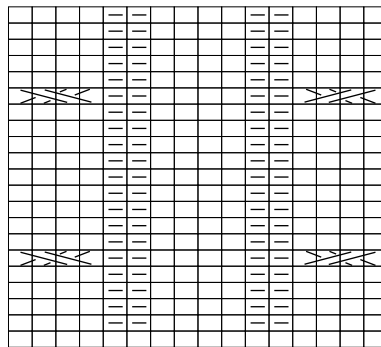
Pattern stitch A

□ = 1 knit

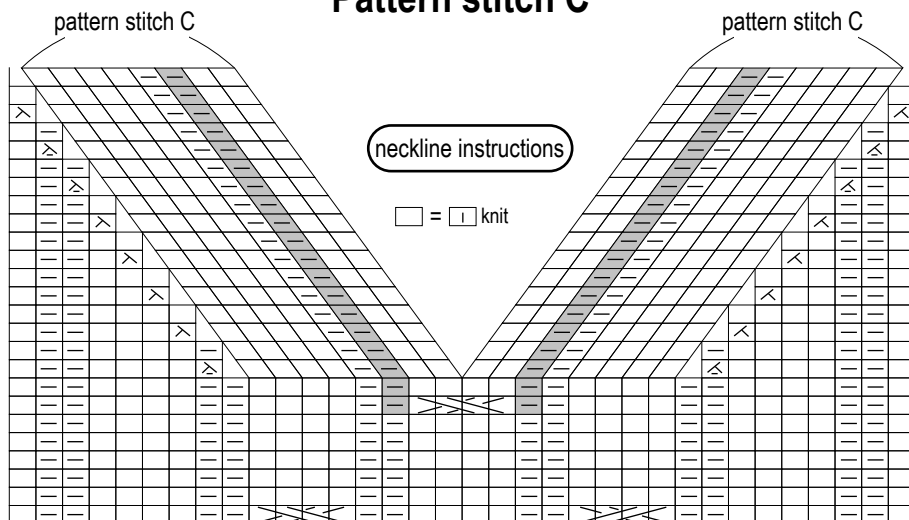


Pattern stitch B

□ = 1 knit



Pattern stitch C



※Work slip stitch into back of third stitch from edge (■) to help prevent neckline from stretching.