

215aw-22 Classic Fur Muffler



Suggested yarn:

- Pierrot Yarns Ciniglia [100% acrylic; 66 yds/60m per 1.76 oz./50g skein]; color #02 powder beige, 2 skeins [70g]
- Pierrot Yarns Savon [100% nylon; 61 yds/56m per 1.41 oz./40g skein]; color #03 bitter brown, 8 skeins [305g]

Tools/Notions:

- 3.9mm (approx. US 6) knitting needles or size necessary to achieve gauge

Finished measurements:

- width 23.5cm/9.25"
- length 146cm/57.48"

Gauge (10cm/4" square):

- pattern stitch: 18 sts and 20 rows

Gauge may vary according to individual knitting style. Change needle size if necessary to achieve gauge. Alternatively, rework pattern with your own gauge measurements.

Summary

Preparation: Divide skein of Ciniglia into two equal parts. You will use one half of the the Ciniglia for the vertical stripes and one half for the horizontal stripes.

Muffler (make 2): Cast on with long-tail cast-on method. Work in pattern stitch according to schematic. Work vertical stripes with separate ball of Ciniglia using intarsia method.

Finishing: With wrong sides facing each other, seam both side edges with mattress stitch. Seam cast-on edge to bind-off edge with Kitchener stitch.

Abbreviations:

BO = bind off

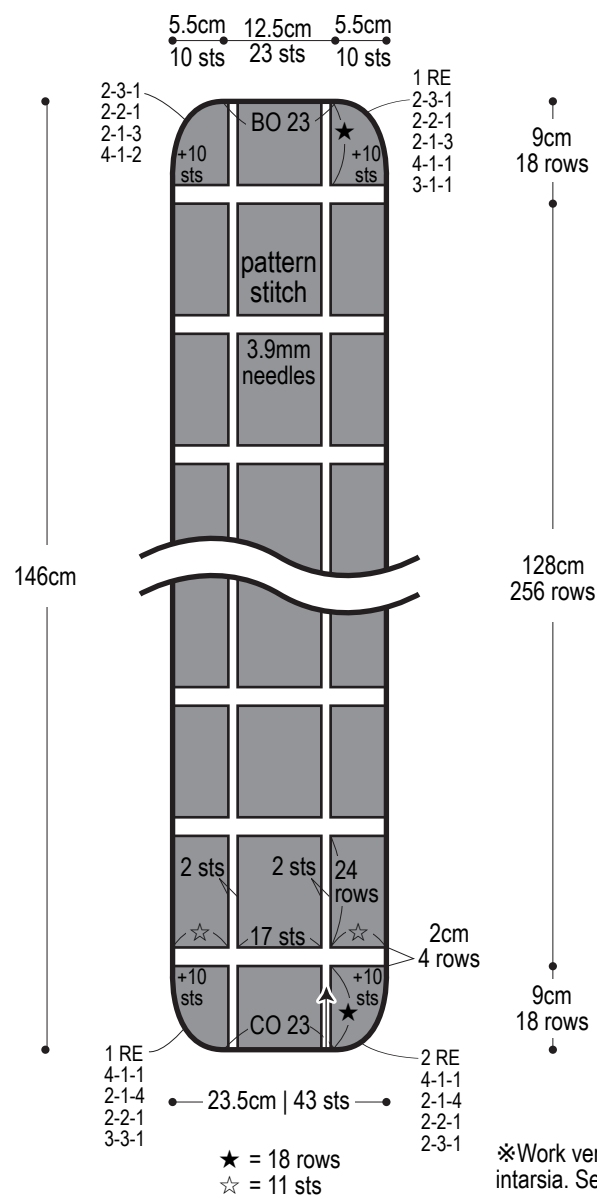
CO = cast on

k = knit stitch

RE = row(s) even

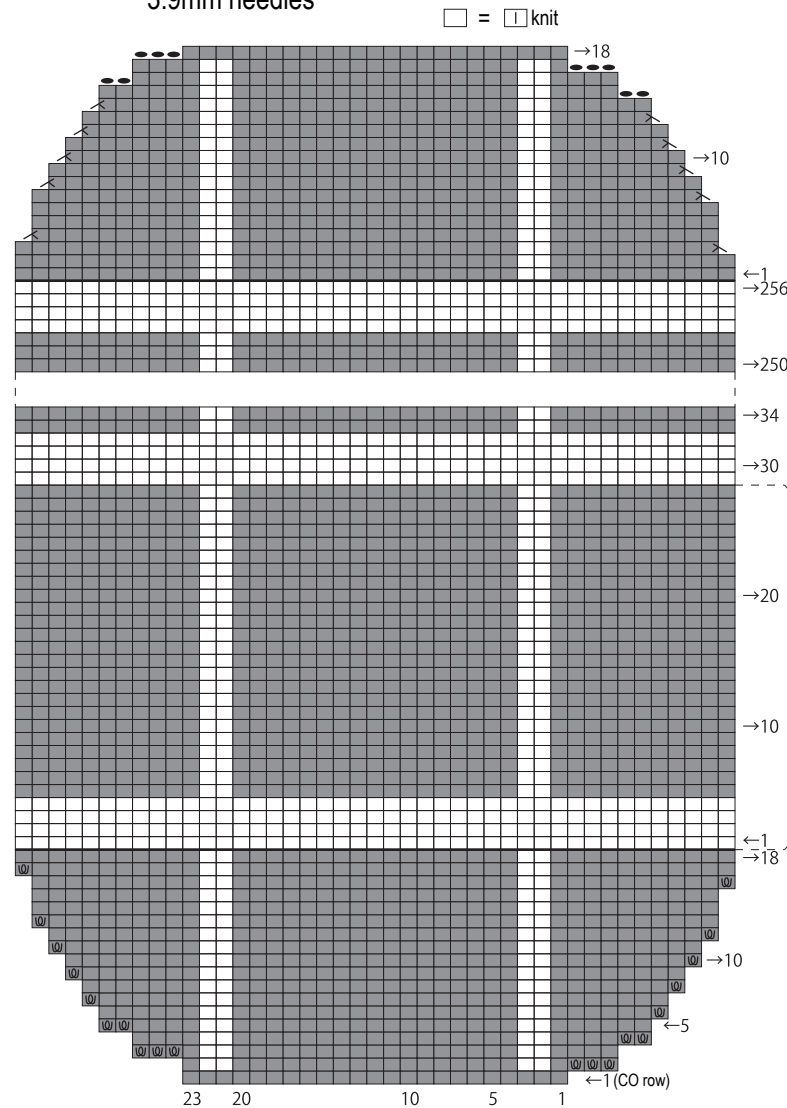
#-#-# = rows-stitches-times

Muffer schematic (make 2)



Muffer chart

3.9mm needles



Use this QR code on smartphone to view a video about how to the vertical stripes in intarsia.

※To view on computer, search on the Pierrot Yarns website or YouTube channel instead.

検索

- ⓪ = backwards-loop cast-on increase
- = Savon
- = Ciniglia