

215aw-21 Grass-colored Snood



Suggested yarn:

- Pierrot Yarns Elmer [80% silk, 20% wool; 175 yds/160m per 1.41 oz./40g skein];
 - color #02 antique green, 2 skeins [80g]
 - color #07 bronze gray, 2 skeins [80g]

Tools/Notions:

- 4.0mm (US G) crochet hook or size necessary to achieve gauge

Finished measurements:

- width 23cm/9.06"
- length 133cm/52.36"

Gauge (10cm/4" square):

- pattern stitch: 19 sts and 14.5 rows

Gauge may vary according to individual crochet style. Change hook size if necessary to achieve gauge. Alternatively, rework pattern with your own gauge measurements.

Summary

❖**Note:** Like all Japanese patterns, stitch counts given here for foundation chains do **not** include any chain sts needed for turning posts.

Body of snood/cowl: Work foundation chain to begin, then work in pattern stitch, changing colors every two rows.

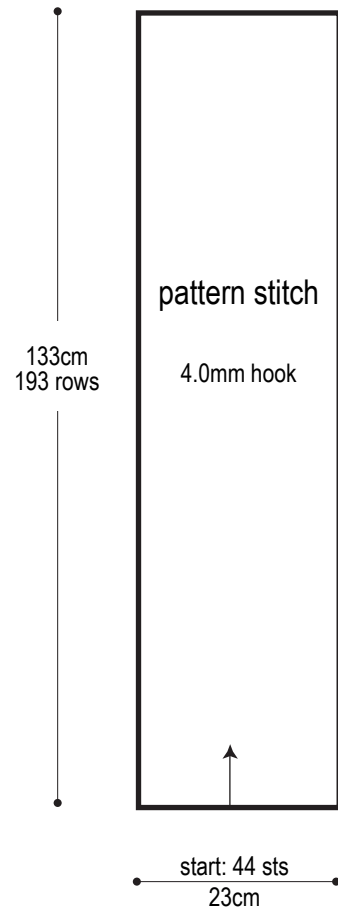
Finishing: With wrong sides facing each other, seam ends together with whipstitch.

Abbreviations:

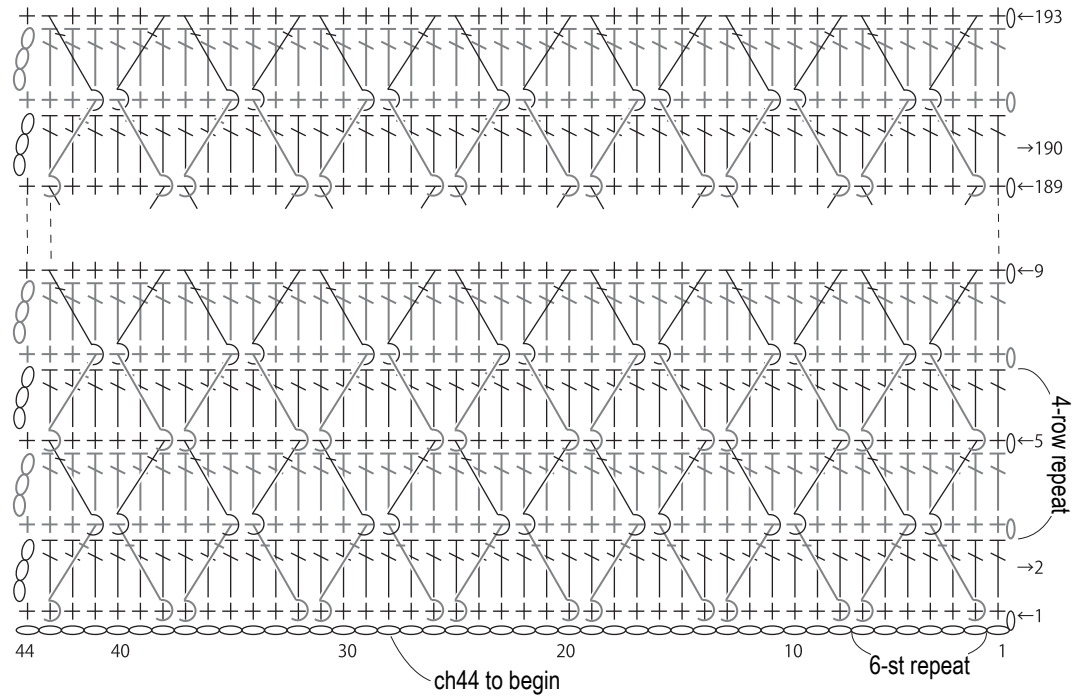
ch = chain

fp dc = front post double crochet (US)

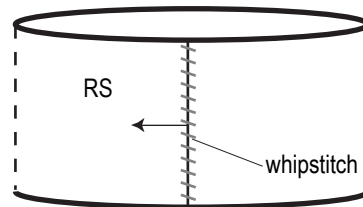
Schematic



Pattern stitch 4.0mm hook

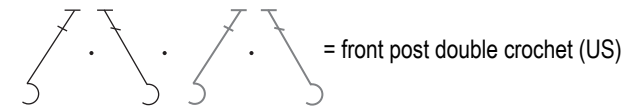


Finishing



— = color #02

— = color #07



※Pull up slightly longer loops for post stitches.