

24-25-8 Poncho



Suggested yarn:

- Pierrot Yarns Slub [100% acrylic; 24 yds/22m per 1.41 oz./40g skein]; color #1, 18 skeins [690g]

Tools/Notions:

- 8.0mm (US L) crochet hook or size necessary to achieve gauge
- 6.6mm (approx. US 10.5) circular knitting needle or size necessary to achieve gauge

Finished measurements:

- back length: 66cm/25.98"
- width at hem: 182cm/71.65"

Gauge (10cm/4" square):

- pattern stitch: 8 sts and 5 rows

Gauge may vary according to individual crochet style. Change hook size if necessary to achieve gauge. Alternatively, rework pattern with your own gauge measurements.

Summary

✳️**Note:** Like all Japanese patterns, stitch counts given here for foundation chains do not include any chain sts needed for turning posts.

Body: Work foundation chain to begin, making sure to work first row into bottom loops of chain. After working 29 chain stitches for foundation chain, ch3 for turning post and turn work. Work row one as follows: *ch1, dc1*, repeat from * to * across. Following pattern stitch, you will be working increases at center. Continue for 22 rows, then bind off. Make second piece identical to the first.

Finishing: Seam sides with chain seam as follows: *slip 1 stitch, ch3-4 sts (depending on height of stitches)*, repeat from * to * across. Pick up stitches around neckline; work collar in k2p2 ribbing. Bind off with 2x2 tubular bind-off method. Make fringe and attach around hem.

Abbreviations:

ch = chain stitch

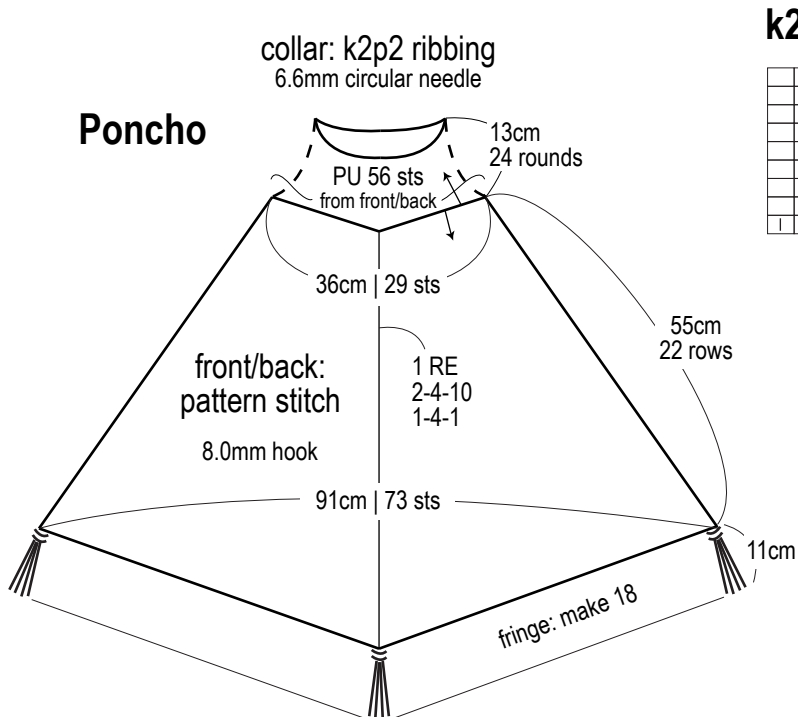
k = knit stitch

p = purl stitch

PU = pick up

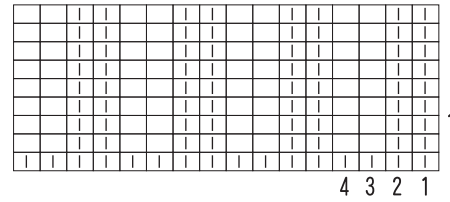
RE = row(s) even

= rows-stitches-times



k2p2 ribbing

□ = □ purl



※To make fringe, take 3 strands of yarn (each 25cm long) and fold in two. Knot into place on hem.

Pattern stitch

