

215aw-09 Fontaine Men's Cable Vest



Suggested yarn:

- Pierrot Yarns Fontaine [80% wool, 20% alpaca; 103 yds/94m per 1.41 oz./40g skein]; • color #09 charcoal gray, 8 skeins [300g]

Tools/Notions:

- 3.6mm (approx. US 5) and 4.2mm (approx. US 6) knitting needles or sizes necessary to achieve gauge
- 3.6mm (approx. US 5) double-pointed knitting needles or size necessary to achieve gauge
- cable needle

Finished measurements:

- chest 96cm/37.80"
- cross back width 39cm/15.35"
- back length 66cm/25.98"

Gauge (10cm/4" square):

- pattern stitch: 25 sts and 27 rows
- stockinette stitch: 22 sts and 27 rows

Gauge may vary according to individual knitting style. Change needle size if necessary to achieve gauge. Alternatively, rework pattern with your own gauge measurements.

Summary

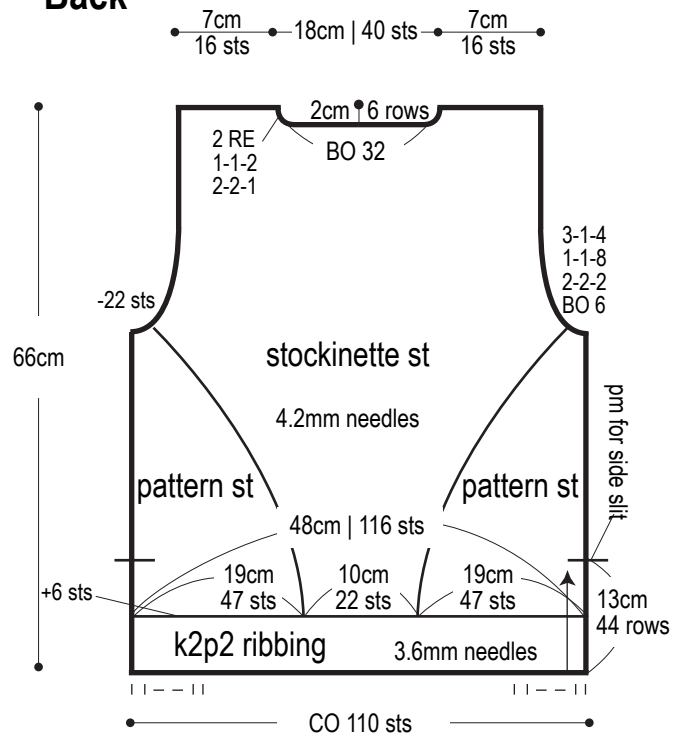
Body: Cast on with long-tail cast-on method. Working k2p2 ribbing, then continue in pattern stitch and stockinette stitch. Change needle size and work increases when indicated. Shape armscye and neckline by binding off stitches as indicated and by working decreases at edges (1 st in from the edge).

Finishing: Seam shoulders with crochet slip stitch seam. Seam side from marker to underarm using mattress stitch. (The area below the marker will remain unseamed.) Pick up stitches around armholes and neckline, respectively; work edging in k2p2 ribbing in the round. Bind off in pattern.

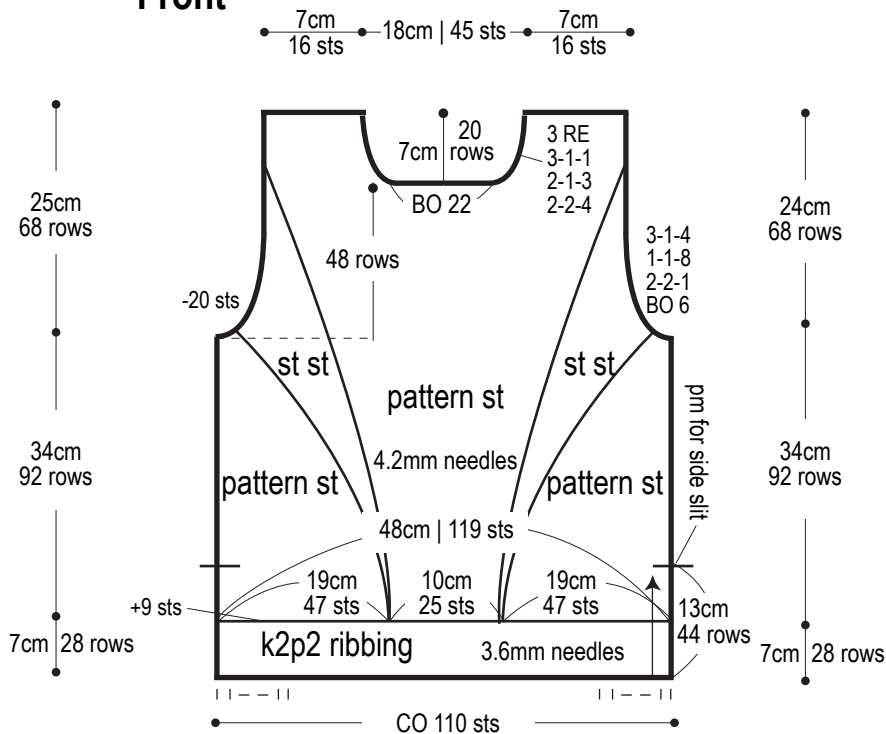
Abbreviations:

BO = bind off CO = cast on k = knit p = purl pm = place marker PU = pick up RE = row(s) even st st = stockinette stitch
#-#-# = rows-stitches-times

Back

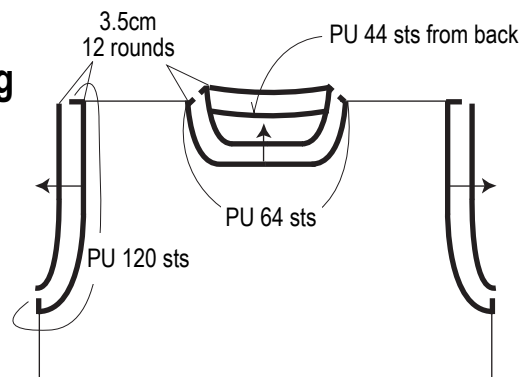


Front



Collar & armhole edging

k2p2 ribbing, 3.6mm DPNs



Front

□ = □ knit

Pattern stitch 4.2mm needles



||
C6B



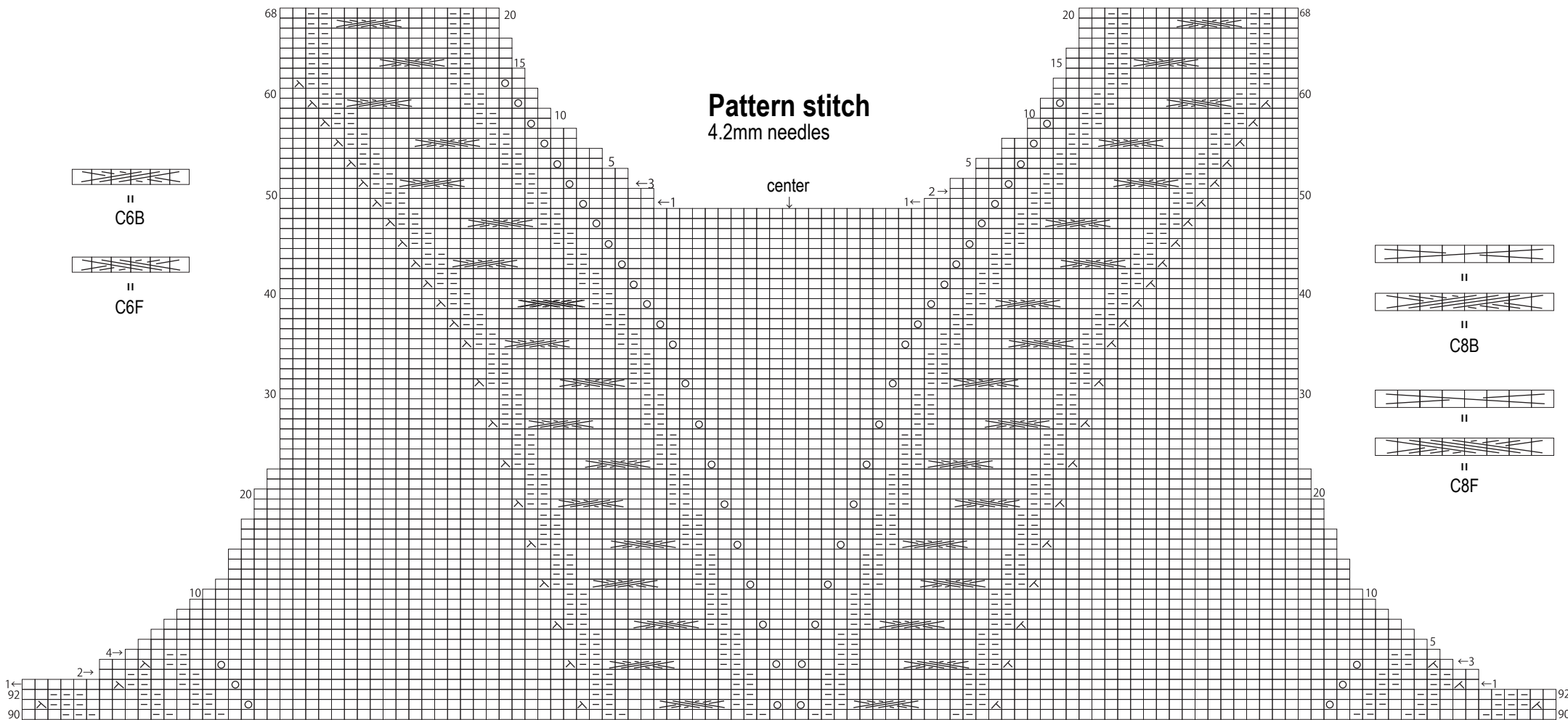
||
C6F



||
||
C8B

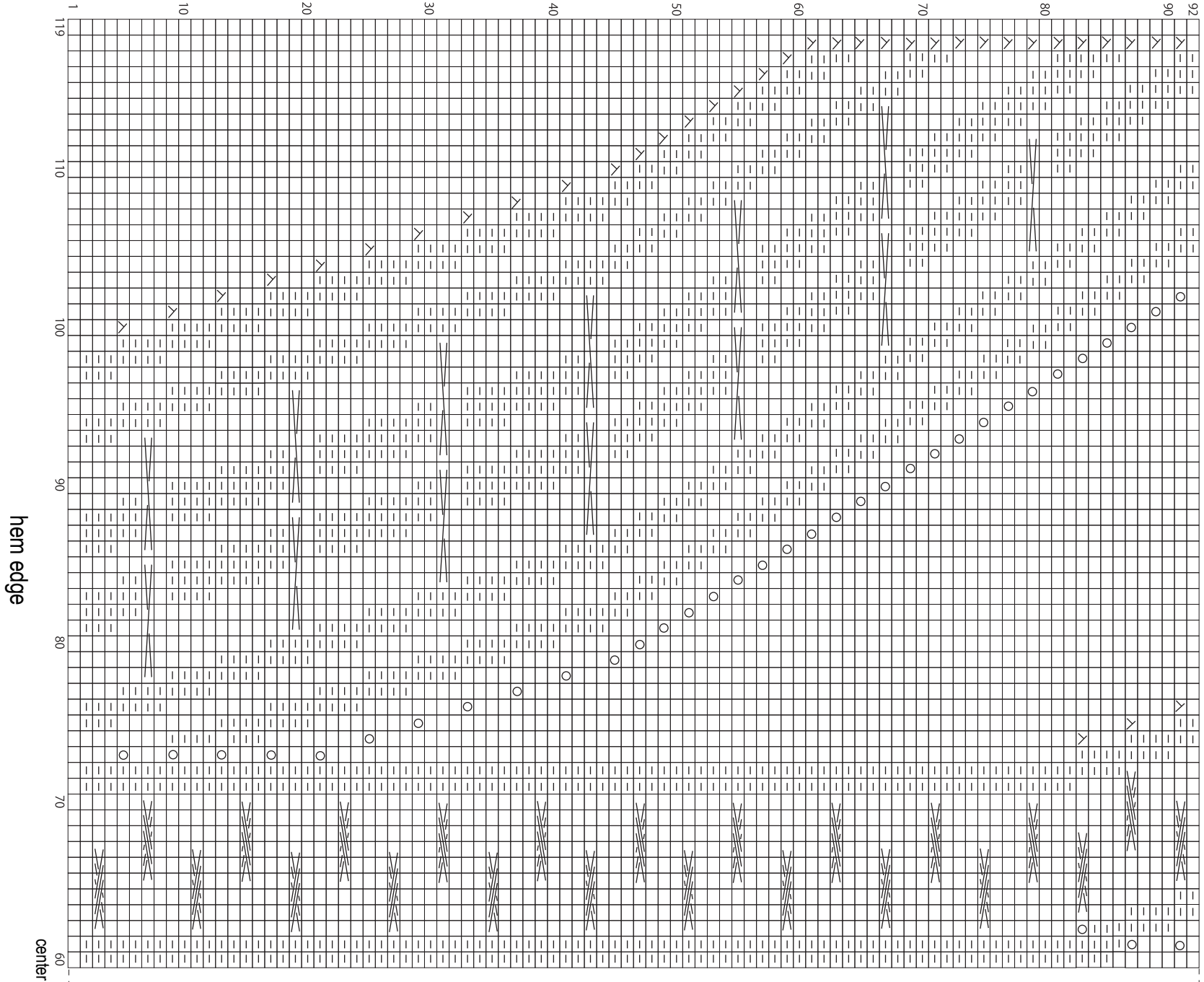


||
||
C8F



Right front

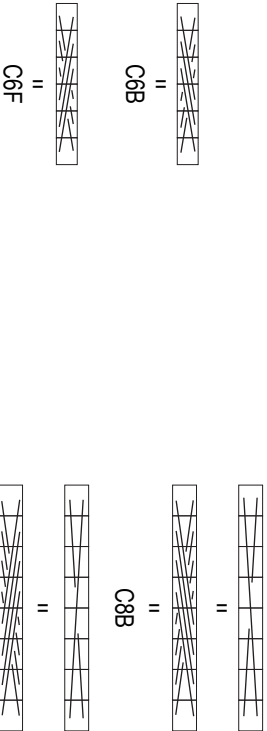
last stitch of side (up to underarm)



continue to left front

continue to left front

※47-st pattern st sections of left & right back worked in the same manner, with stockinette stitch at center.

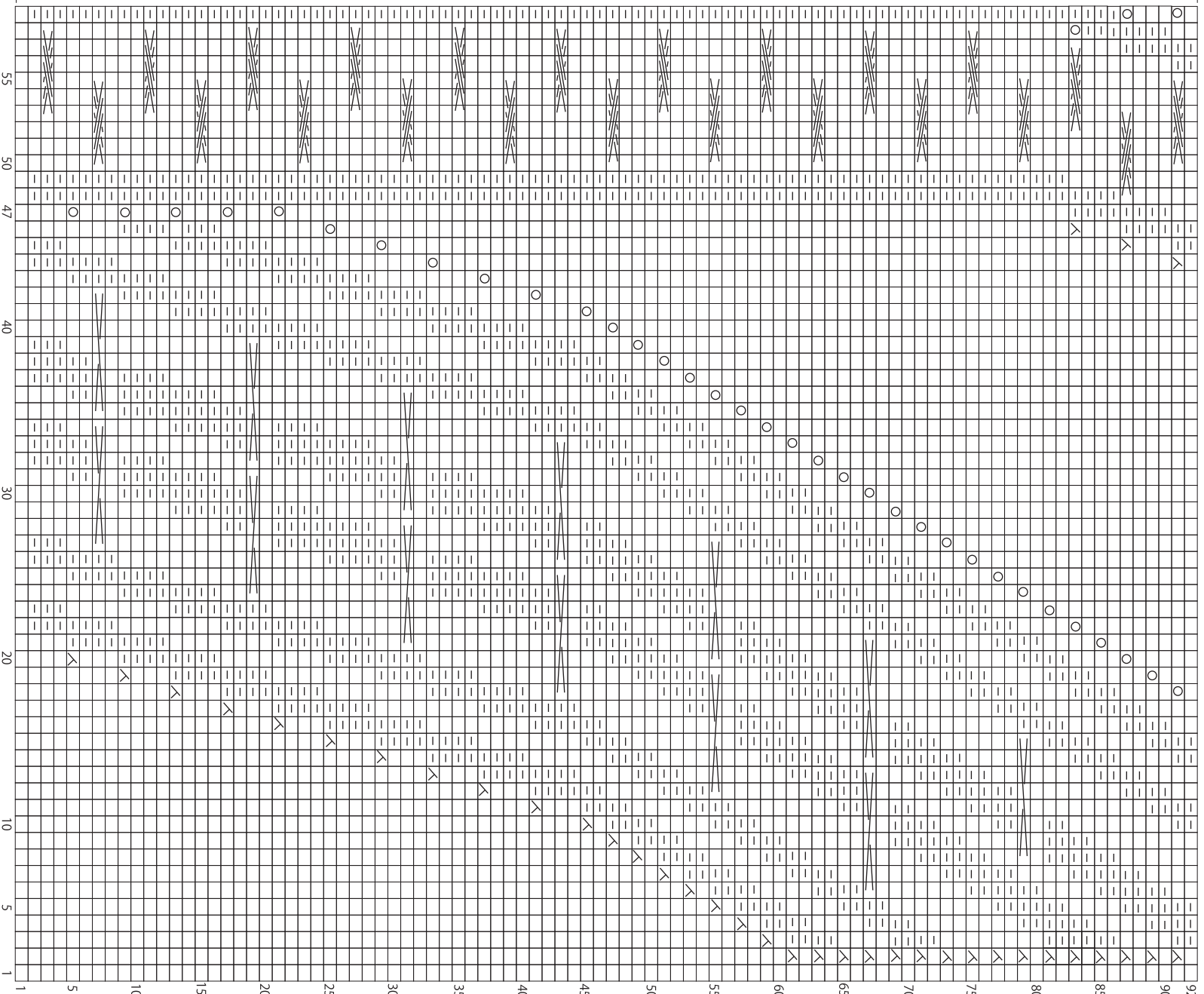


Left front

□ = □ knit

continue to right front

last stitch of side (up to underarm) →



continue to right front

hem edge