

215aw-08 Turtle Big Knit



Suggested yarn:

- Baruffa Pura Lana DK [100% merino wool; 126 yds/115m per 1.76 oz./50g skein]; color #319 laguna blue, 18 skeins [870g]

Tools/Notions:

- 3.3mm (approx. US 4) and 3.6mm (approx. US 5) knitting needles or size necessary to achieve gauge
- 3.6mm (approx. US 5), 3.9mm (approx. US 6), and 4.2mm (approx. US 6) double-pointed knitting needles or size necessary to achieve gauge
- cable needle

Finished measurements:

- chest 104cm/40.94"
- center back neck-to-cuff 83cm/32.68"
- back length 67cm/26.38"

Gauge (10cm/4" square):

- pattern stitch A: 25 sts and 34 rows
- pattern stitch B: 27 sts and 34 rows
- garter stitch: 24 sts and 34 rows
- k2p1 ribbing (with 3.3mm needles): 22 sts and 36 rows

Gauge may vary according to individual knitting style. Change needle size if necessary to achieve gauge. Alternatively, rework pattern with your own gauge measurements.

Summary

Body & sleeves: Cast on for body with long-tail cast-on method. Work in k2p1 ribbing. Continue in pattern stitch A, then garter stitch, then pattern stitch B. Work sleeves in same manner. To shape sides of sleeves, use lifted increases worked 1 stitch in from the edge. In an effort to prevent sideways stretching of the pattern stitch fabric, work decreases in last row of shoulders, neckline bind-off stitches, and sleeves.

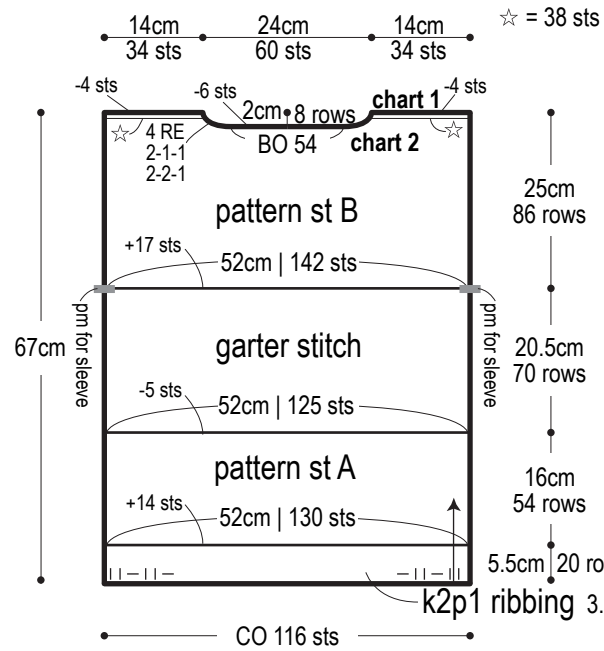
Finishing: Seam shoulders with crochet slip stitch seam. Seam sleeves to body with crochet slip stitch seam. Seam sides and sleeve undersides with one continuous mattress stitch (per side of body). Pick up stitches around neckline; work turtleneck collar in k1p2 ribbing in the round. Bind off in pattern.

Abbreviations:

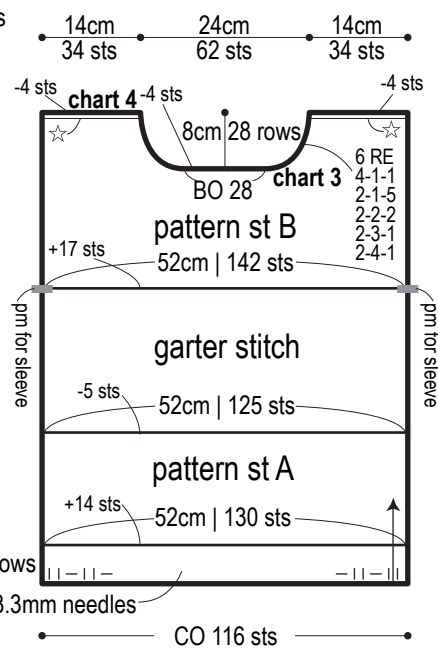
BO = bind off CO = cast on k = knit stitch p = purl stitch pm = place marker PU = pick up RE = row(s) even #-#-# = rows-stitches-times

※Note: use 3.6mm needles for everything *except* ribbing.

Back

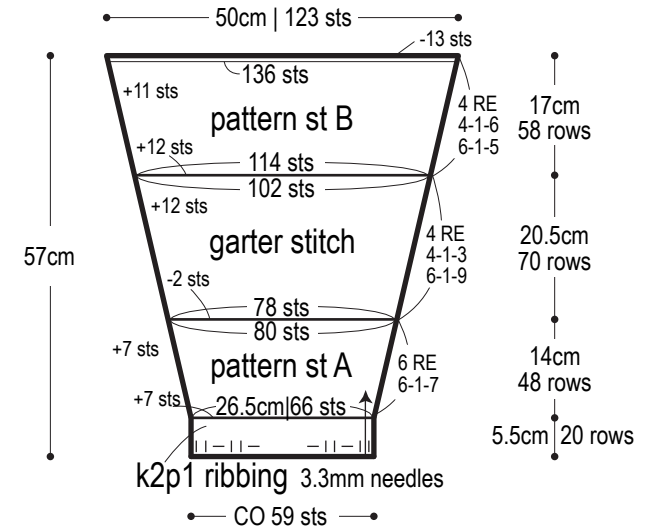


Front



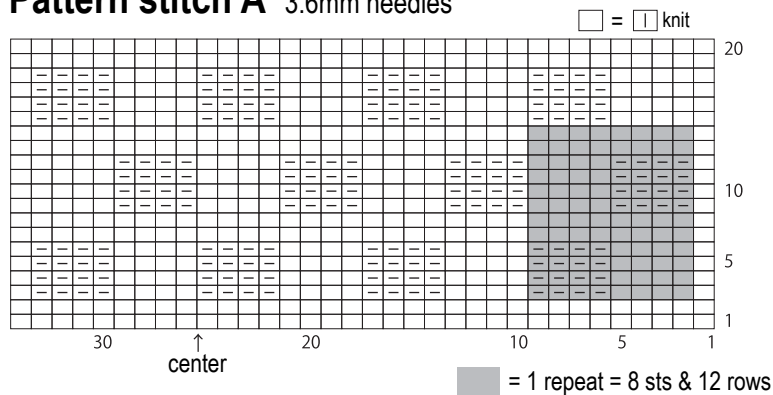
※Work decreases on last row of shoulders, neckline bind-off, and sleeves.

Sleeve



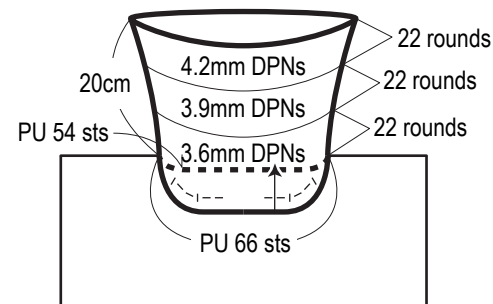
※Shape sides of sleeve using lifted increase worked 1 stitch in from the edge.

Pattern stitch A 3.6mm needles

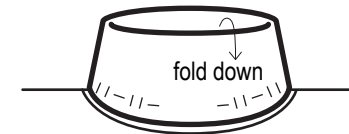


Collar

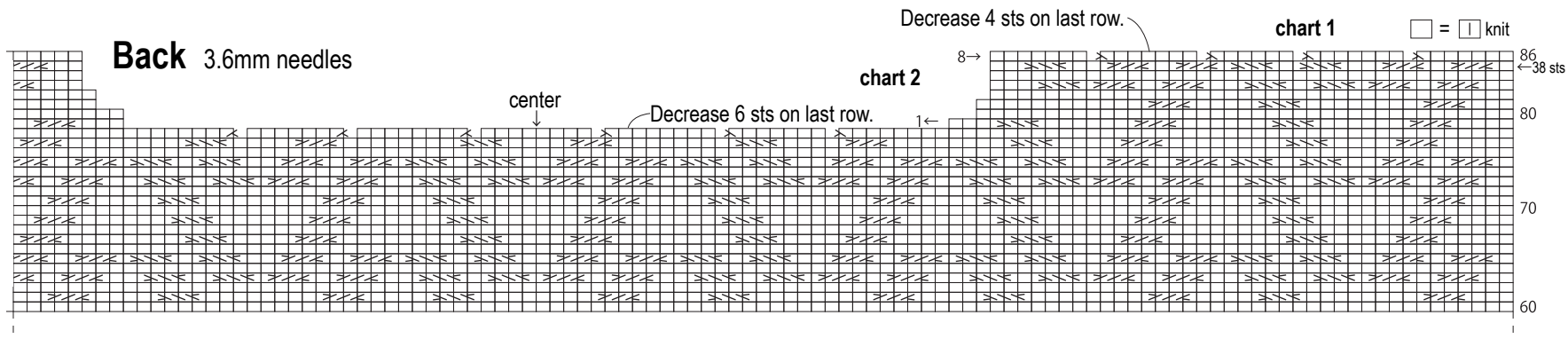
k1p2 ribbing



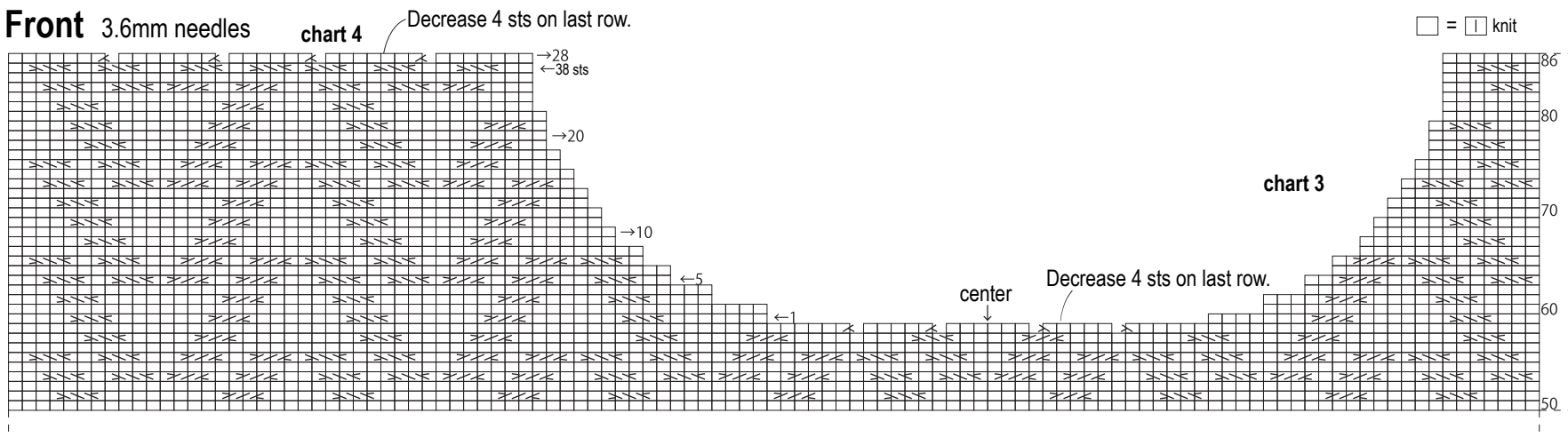
※DPNs = double-pointed needles



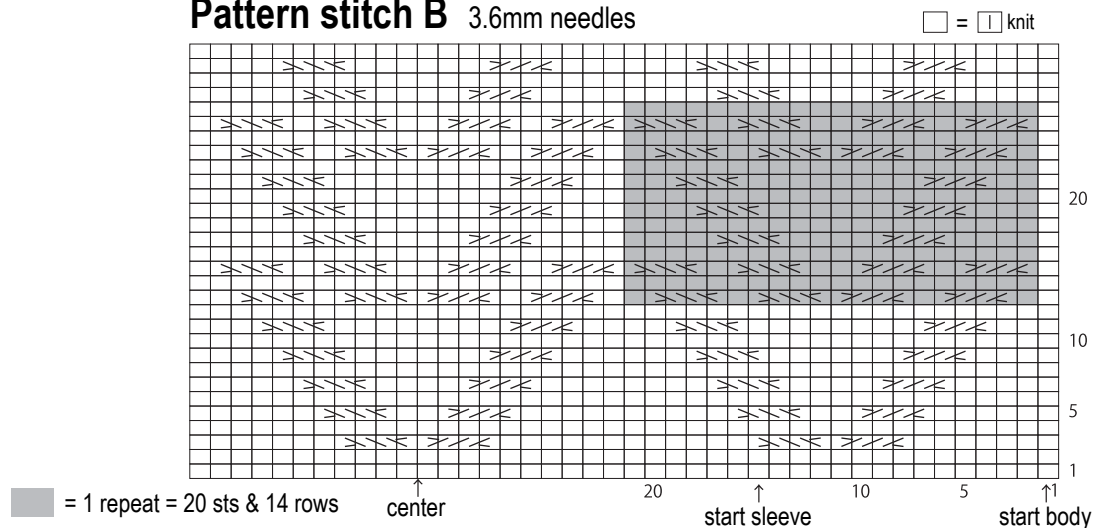
Back 3.6mm needles



Front 3.6mm needles



Pattern stitch B 3.6mm needles



□ = C4F

Slip 3 sts onto cable needle and hold in front, k1, k3 from cable needle.

□ = C4B

Slip 1 st onto cable needle and hold in back, k3, k1 from cable needle.