

215aw-05 Design Sweater



Suggested yarn:

- Pierrot Yarns Saumur Plus [70% merino wool, 30% baby alpaca; 102 yds/93m per 1.06 oz./30g skein];
 - color #21 beige, 5 skeins [140g]
 - color #24 mustard, 7 skeins [190g]

Tools/Notions:

- 3.0mm (US 3) and 3.6mm (approx. US 5) knitting needles or size necessary to achieve gauge
- 3.0mm (US 3) double-pointed knitting needles or size necessary to achieve gauge

Finished measurements:

- bust 92cm/36.22"
- cross back width 36cm/14.17"
- back length 56cm/22.05"
- sleeve length 55cm/21.65"

Gauge (10cm/4" square):

- pattern stitch: 21 sts and 36 rows

Gauge may vary according to individual knitting style. Change needle size if necessary to achieve gauge. Alternatively, rework pattern with your own gauge measurements.

Summary

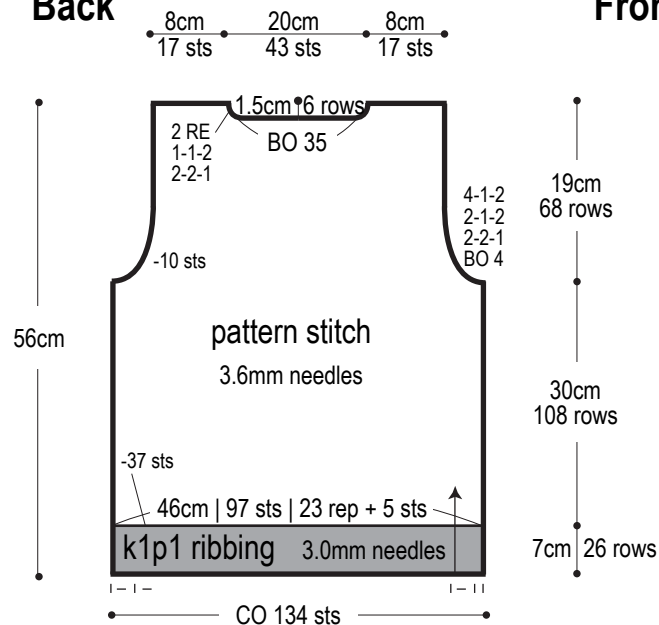
Body & sleeves: Cast on with long-tail cast-on method. Work in k1p1 ribbing. Change needle size, then continue in pattern stitch. Shape armscye, neckline, and sleeve cap by binding off stitches where indicated and by working decreases (1 stitch in from the edge).

Finishing: Seam shoulders with crochet slip stitch seam. Seam sides and sleeve undersides with mattress stitch. Pick up stitches around neckline; work k1p1 ribbing in the round. Bind off in pattern. Seam sleeves to body with crochet slip stitch seam.

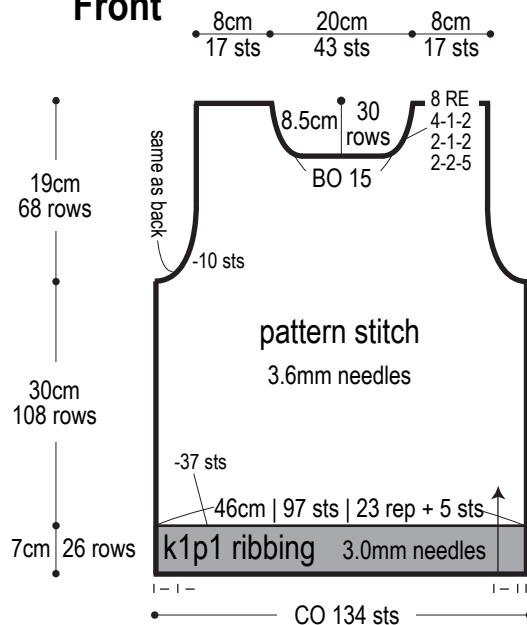
Abbreviations:

BO = bind off CO = cast on k = knit stitch p = purl stitch PU = pick up RE = row(s) even rep = pattern repeat(s) #-#-# = rows-stitches-times

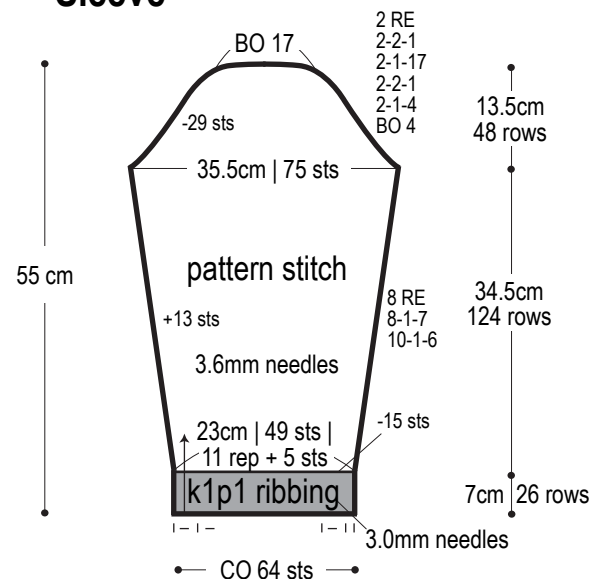
Back



Front



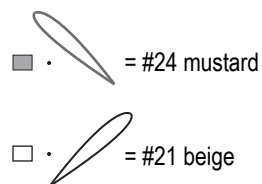
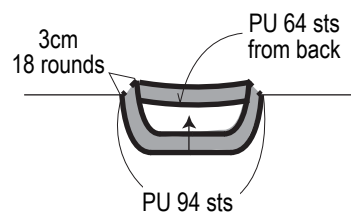
Sleeve



※collar, cuff, and hem edging = #24 mustard

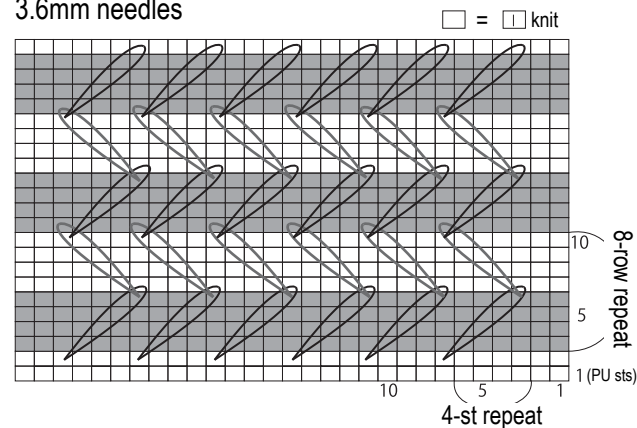
Collar: k1p1 ribbing

3.0mm DPNs



Pattern stitch

3.6mm needles



Use this QR code on your smartphone to view a video about how to work the pattern stitch.



※To view on computer, search on the Pierrot Yarns website or YouTube channel instead.

検索