

215aw-01 Loose Cardigan



Suggested yarn:

- Pierrot Yarns Jewel [55% polyester, 45% wool; 109 yds/100m per 1.41 oz./40g skein]; color #07 holy night, 9 skeins [350g]

Tools/Notions:

- 5.1mm (approx. US 8) and 5.7mm (approx. US 9) knitting needles or size necessary to achieve gauge

Finished measurements:

- bust 103cm/40.55"
- center back neck-to-cuff 74cm/29.13"
- back length 68cm/26.77"

Gauge (10cm/4" square):

- stockinette stitch: 14 sts and 22 rows
- pattern stitch: 21.5 sts and 22 rows

Gauge may vary according to individual knitting style. Change needle size if necessary to achieve gauge. Alternatively, rework pattern with your own gauge measurements.

Summary

Back: Cast on with long-tail cast-on method. Work in k1p1 ribbing, then continue in stockinette stitch. Shape raglan edges by binding off stitches where indicated and by working decreases (1 stitch in from the edge).

Front: Cast on as for back. Work pattern stitch at center with stockinette stitch sections on either side.

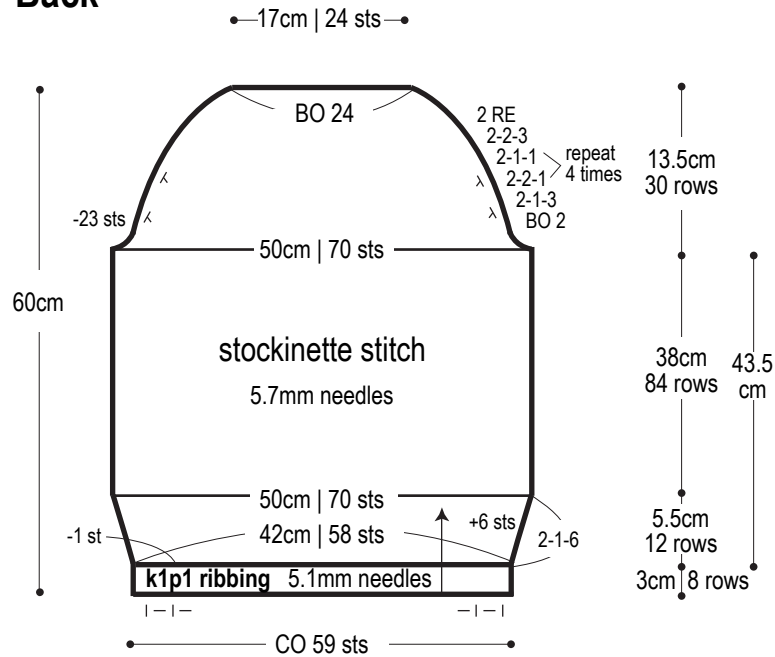
Sleeve: Cast on as for back. Work pattern stitch at center with stockinette stitch sections on either side. Shape raglan edges by working decreases (1 stitch in from the edge).

Finishing: Seam sleeve caps together with right sides facing each other using crochet slip stitch seaming method. Seam raglan edges with mattress stitch. Seam underarm gusset with Kitchener stitch. Using mattress stitch, seam sides from hem continuing up through sleeve to cuff. Work strip of k1p1 ribbing for front & neckline edging; attach to garment with mattress stitch.

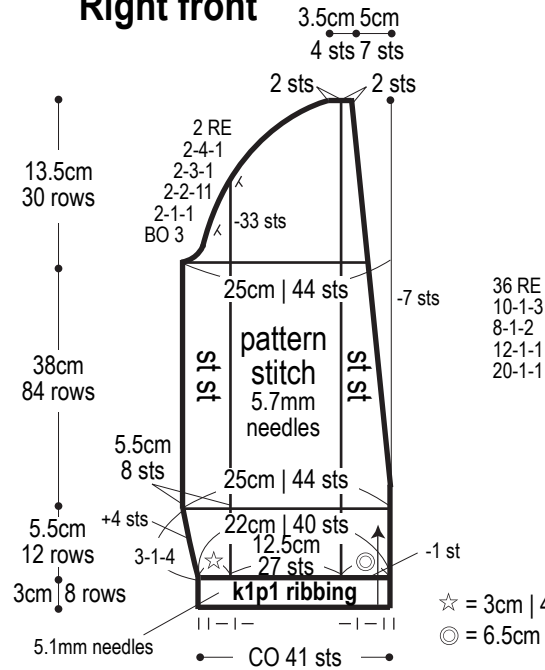
Abbreviations:

BO = bind off CO = cast on k = knit stitch p = purl stitch RE = row(s) even st st = stockinette stitch #-#-# = rows-stitches-times

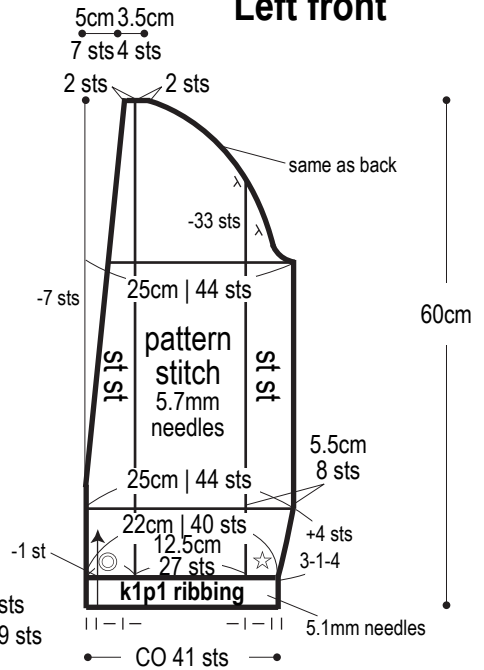
Back



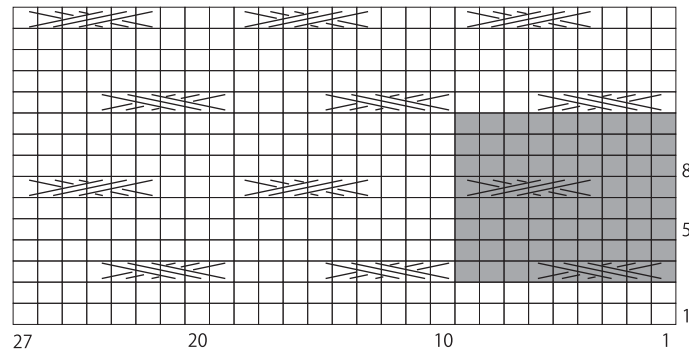
Right front



Left front

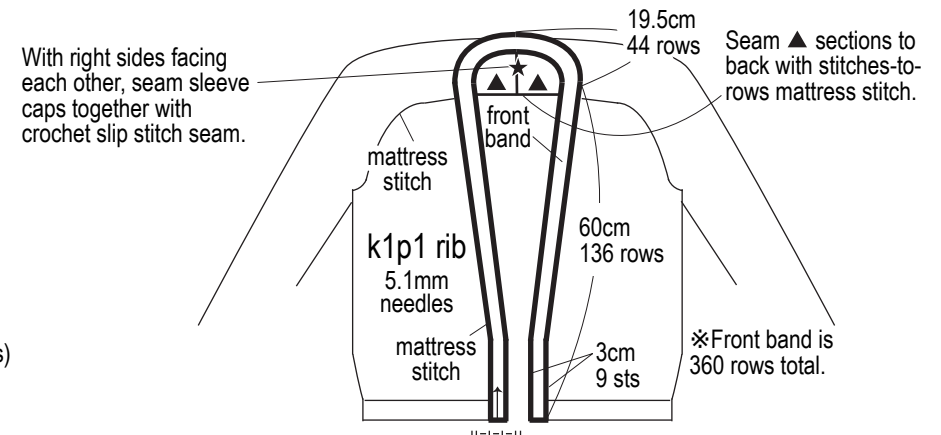


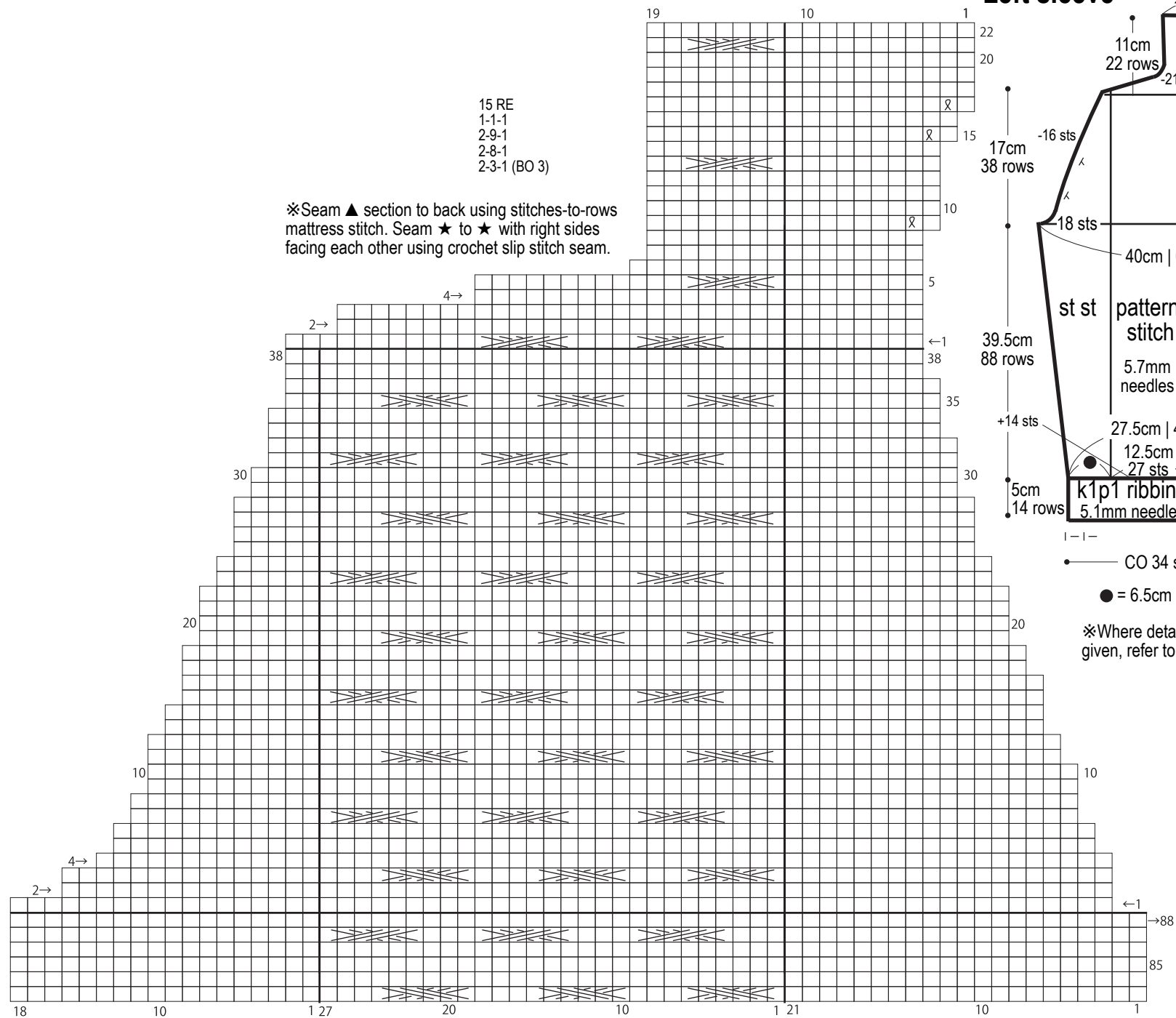
Pattern stitch 5.7mm needles



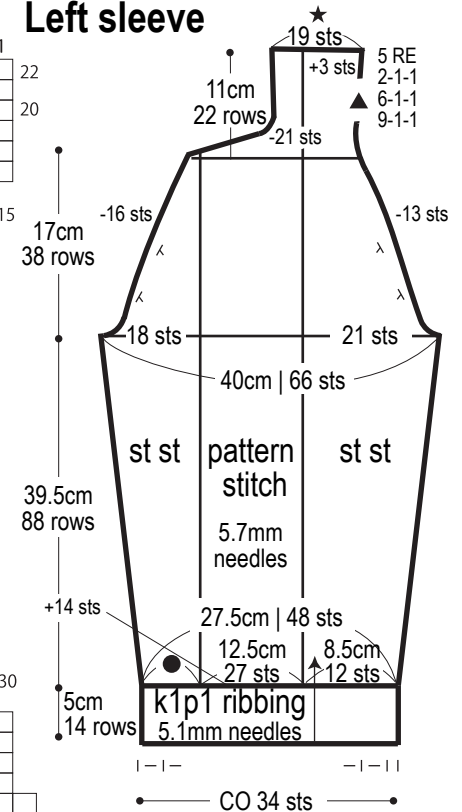
■ = 1 repeat
(9 sts & 8 rows)

Finishing





Left sleeve



※Where details are not given, refer to right sleeve.

