

FG756snood Basic Natural Snood



Suggested yarn:

- Pierrot Yarns Basic Cotton [100% cotton; 60 yds/55m per 1.06 oz./30g skein]; color #5 biscuit, 4 skeins [105g]

Tools/Notions:

- 5.1mm (approx. US 8) knitting needles or size necessary to achieve gauge

Finished measurements:

- circumference 132cm/51.97"
- height 18cm/7.09"

Gauge (10cm/4" square):

- pattern stitch: 21 sts and 20 rows

Gauge may vary according to individual knitting style. Change needle size if necessary to achieve gauge. Alternatively, rework pattern with your own gauge measurements.

Summary

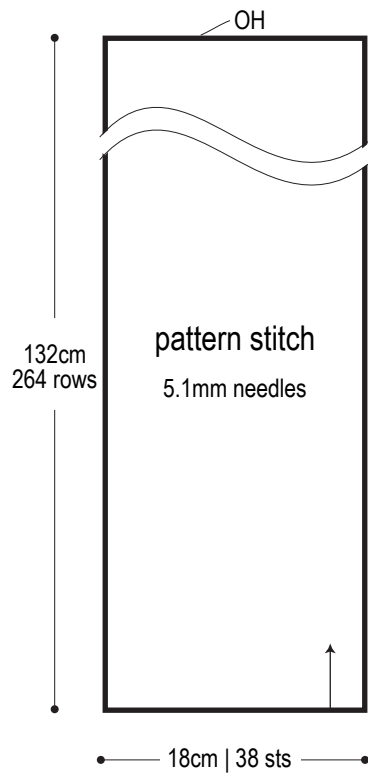
Cast on with crochet provisional cast-on method. Work in pattern stitch. After working last row, do not bind off stitches. Instead, place stitches on stitch holder. Remove provisional cast-on edge from cast-on row, then seam cast-on edge to last row using Kitchener stitch.

Abbreviations:

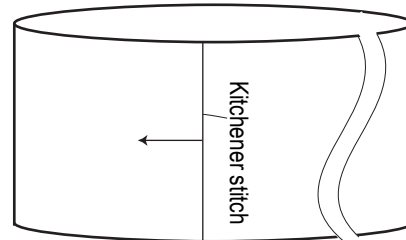
k = knit stitch

OH = on hold (that is, place on stitch holder)

Snood schematic

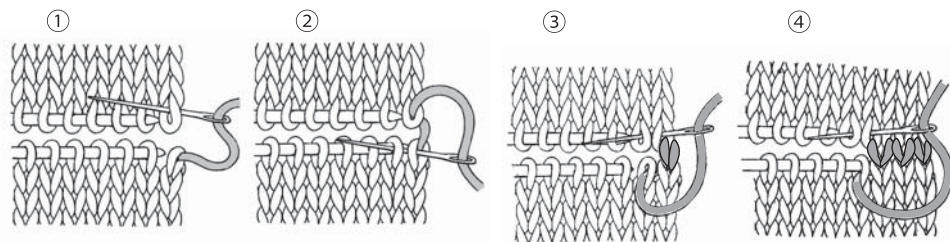


Finishing



Kitchener stitch

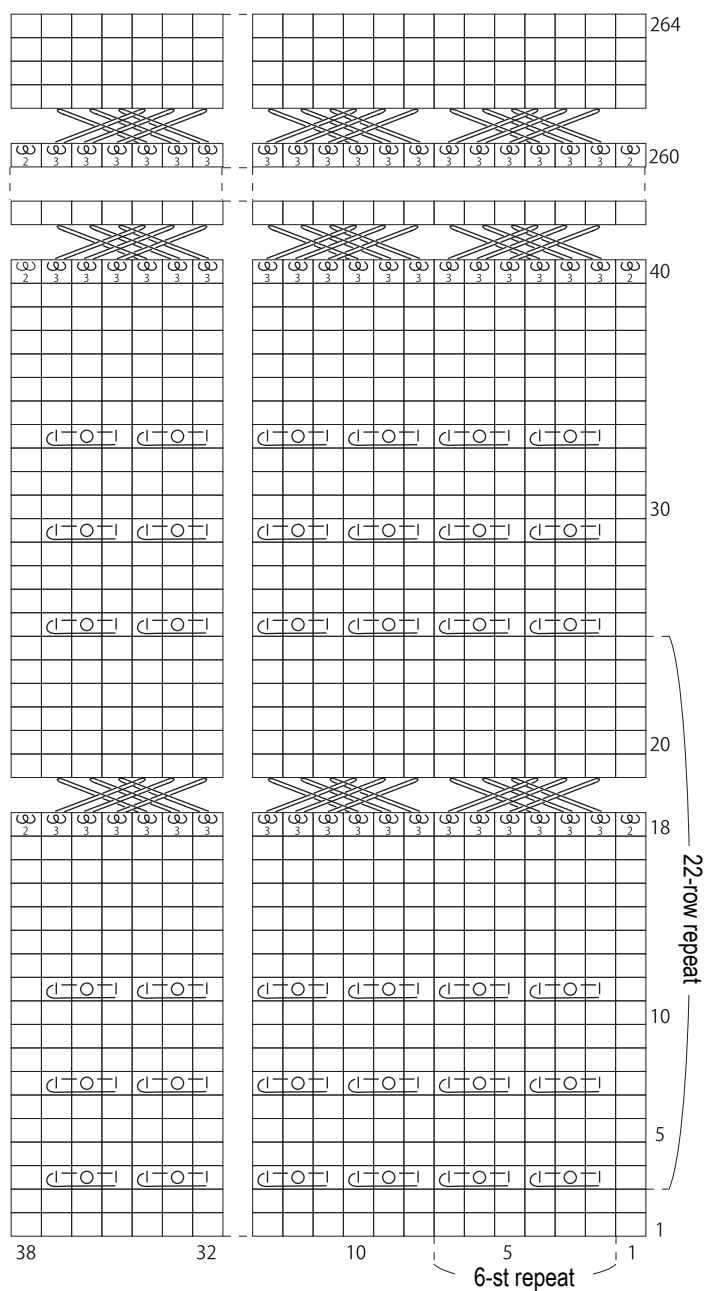
※Remove provisional cast-on edge, transferring stitches to needles. Seam to last row with Kitchener stitch.



※Align stitches of knitted fabric. Graft together by linking each stitch to the ones below it, forming a row of knit stitches as you go.

Pattern stitch 5.1mm needles

□ = □ knit



□ = knot stitch

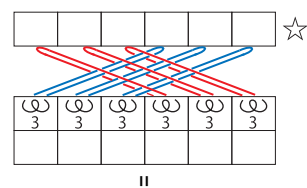
Slip left needle into third stitch on right needle; slip stitch over the first two stitches on right needle. Knit 1, yarn over, knit 1.

□ = □ = 2-wrap drop stitch

□ = □ = 3-wrap drop stitch



Pull 3 left stitches through center of 3 right stitches, thus forming a cable. Knit.



On ☆ row, pull 3 left stitches through 3 right stitches to form a cable. See photo for detail.