

380hmb Heat Motif Bag



Suggested yarn:

- Pierrot Yarns Heat+ [100% polyester; 113 yds/103m per 1.41 oz./40g cone];
 - color #11 camel, 3 cones [90g]
 - color #12 fog pink, 1 cone [25g]
 - color #14 ecru beige, 1 cone [25g]

Tools/Notions:

- 3.0mm (approx. US C or D) crochet hook or size necessary to achieve gauge
- 1 pair of purse handles

Finished measurements:

- width 33cm/12.99"
- height 19.5cm/7.68"
- gusset width 4cm/1.57"

Gauge (10cm/4" square):

- motif (unblocked): 8cm/3.15" diameter
- motif ironed (after blocking with steam): 7.5cm/2.95" diameter

Gauge may vary according to individual crochet style. Change hook size if necessary to achieve gauge. Alternatively, rework pattern with your own gauge measurements.

Summary

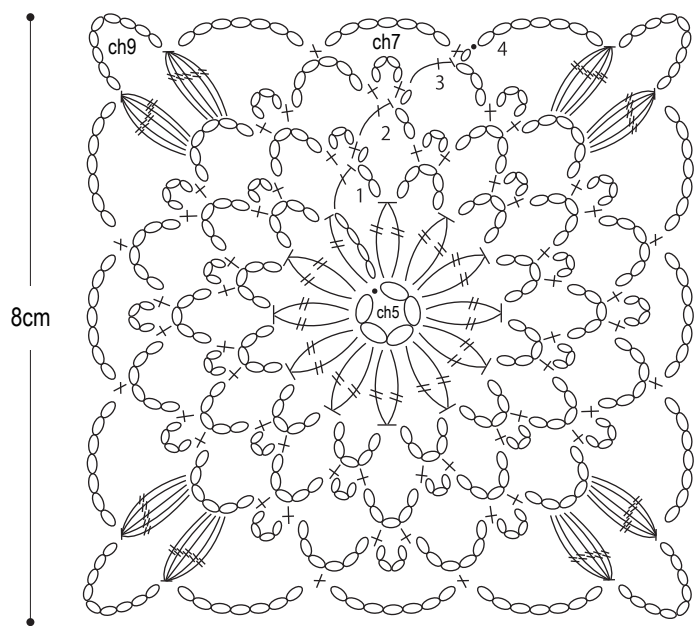
Body of bag: Crochet 8 motifs according to chart, joining them together on last round according to chart. Work upper and lower sections in sc and hdc (see chart for specifics). Work last row of upper section in *crab st, ch1* from * to * across. Make second bag piece identical to first. With wrong sides facing each other, seam the two pieces together at the bottom with whipstitch.

Finishing: Crochet 2 gusset pieces. Seam gusset pieces to body of bag using blanket stitch with wrong sides of fabric facing each other. Block with steam iron. Fasten handles to bag with blanket stitch.

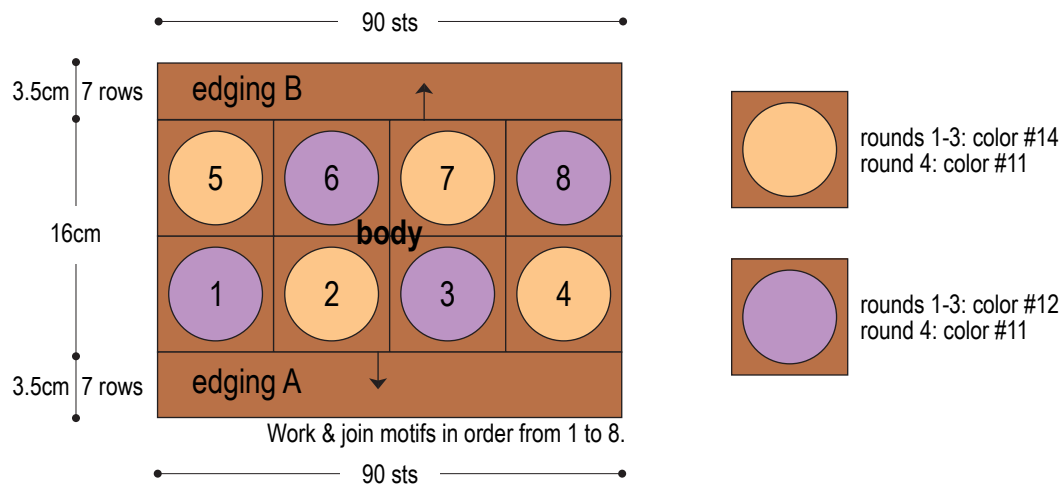
Abbreviations:

ch = chain stitch
hdc = half double crochet stitch (US)
sc = single crochet stitch (US)

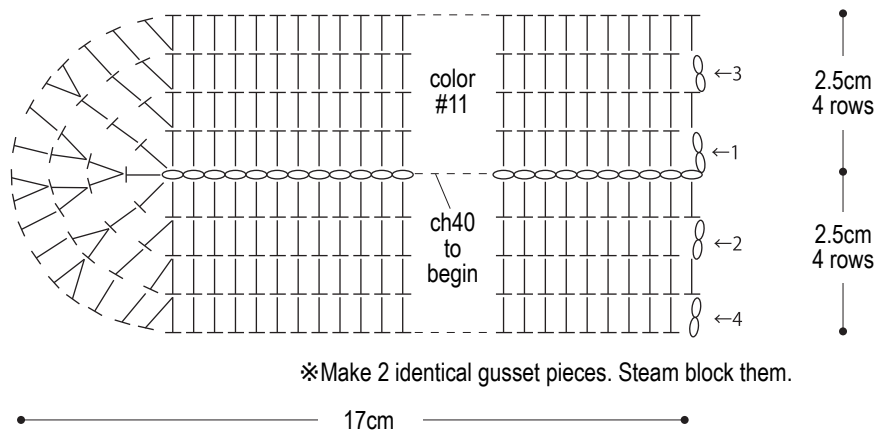
Motif 3.0mm hook



Edging A & B 3.0mm hook



Gusset (make 2) 3.0mm hook



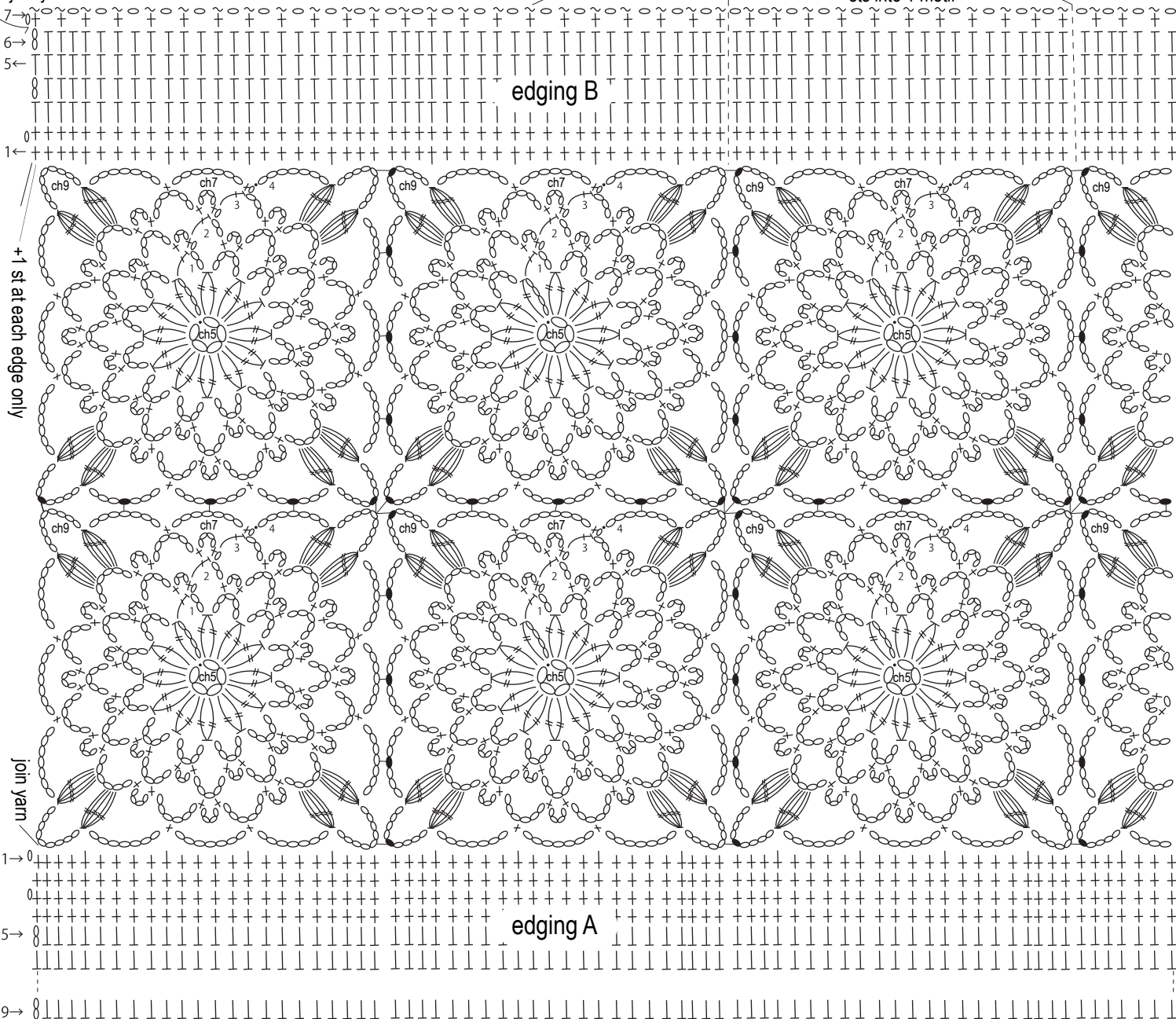
Motif joining & edging

3.0mm hook

crab stitch

work 22 edge
sts into 1 motif

join yarn



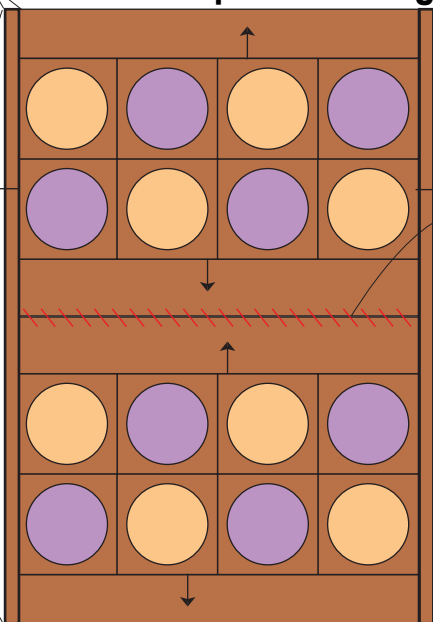
Bottom whipstitch & edging

3.0mm hook

SC
1cm
3 rows

edging:
142 sts

SC
1cm | 3 rows



Whipstitch with WS
facing each other.

Seam sides to
gusset with WS
facing using
blanket st.

Finishing

Attach handles
with blanket stitch.

