

214a-21 Muffler



Suggested yarn:

- Pierrot Yarns Lady Wool [99% wool, 1% polyester; 98 yds/90m per 1.76 oz./50g skein]; color #11 red rose, 4 skeins [180g]

Tools/Notions:

- 4.5mm (US 7) knitting needles or size necessary to achieve gauge

Finished measurements:

- width 18cm/7.09"
- length 165cm/64.96"

Gauge (10cm/4" square):

- stockinette stitch: 18 sts and 25 rows
- seed stitch: 18 sts and 25 rows

Gauge may vary according to individual knitting style. Change needle size if necessary to achieve gauge. Alternatively, rework pattern with your own gauge measurements.

Summary

Muffler: Cast on with long-tail cast-on method. Work in stockinette, then continue in seed stitch. Bind off all stitches.

Finishing: Tie fringe to first row of seed stitch.

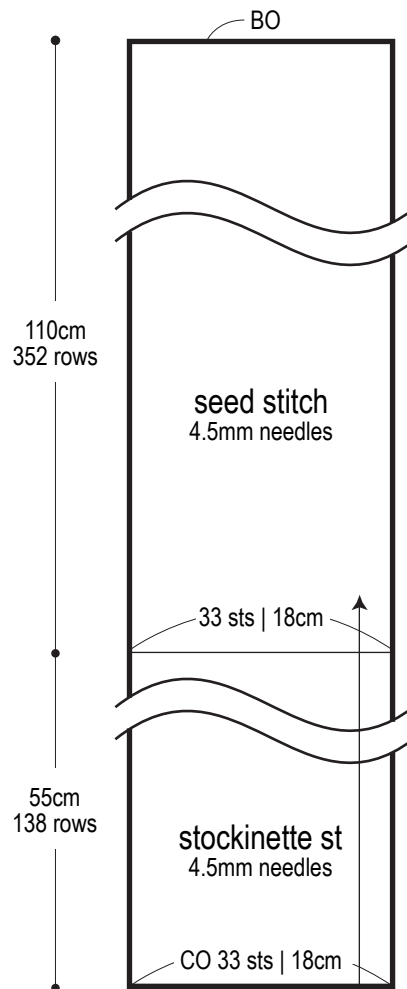
Abbreviations:

BO = bind off

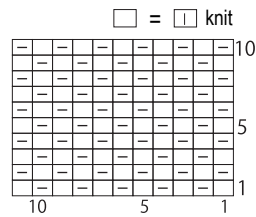
CO = cast on

k = knit stitch

Muffler schematic

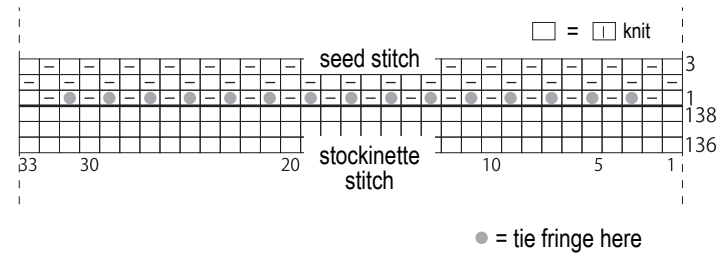


Seed stitch 4.5mm needles



Fringe placement

Make fringe by cutting 2 strands of yarn, each 8cm long, and folding them in two; tie to muffler where shown.



Fringe instructions

