

426snood Summer Shiny Snood



Suggested yarn:

- Pierrot Yarns Melange Silpalon [50% silk, 50% silpalon acrylic; 492 yds/450m per 3.53 oz./100g cone]; color #05 aquamarine, 2 cones [130g]

Tools/Notions:

- 1.50mm (US steel hook #8) crochet hook or size necessary to achieve gauge

Finished measurements:

- circumference 130cm/51.18"
- width 21cm/8.27"

Gauge (10cm/4" square):

- pattern stitch: 38 sts and 16 rows

Gauge may vary according to individual crochet style. Change hook size if necessary to achieve gauge. Alternatively, rework pattern with your own gauge measurements.

Summary

✳️**Note:** Like all Japanese patterns, stitch counts given here for foundation chains do not include any chain sts needed for turning posts.

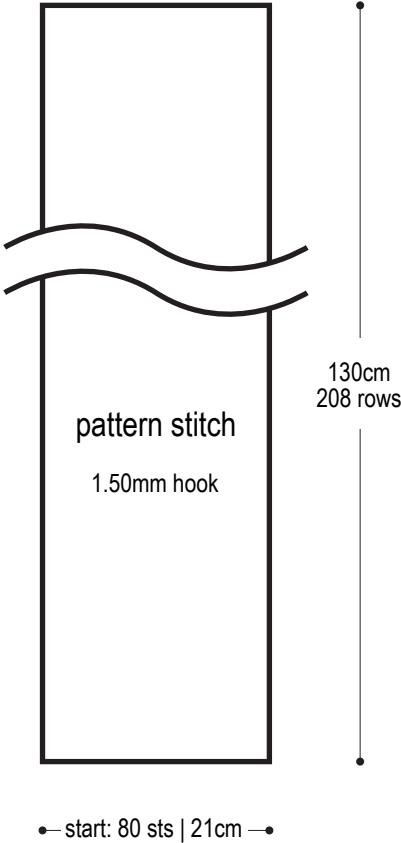
Snood: Work foundation chain to begin. Work in pattern stitch.

Finishing: With wrong sides facing each other, seam foundation chain edge to bind-off edge with whipstitch.

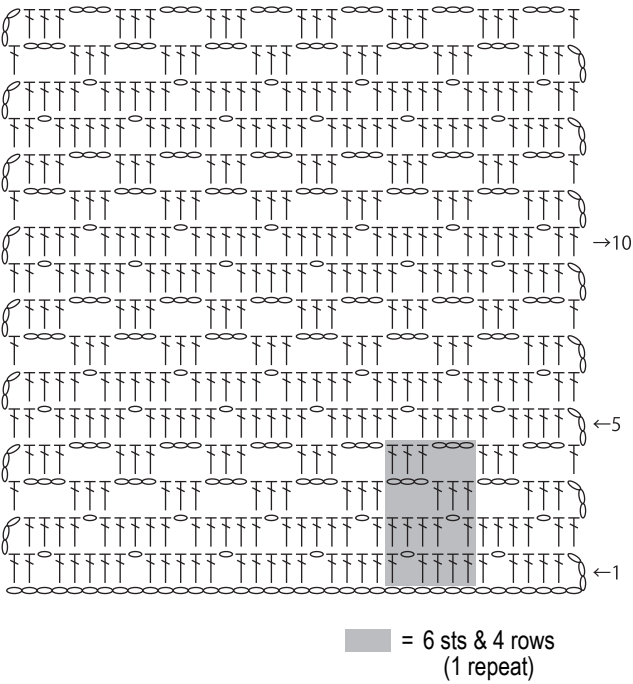
Abbreviations:

ch = chain

Snood schematic



Pattern stitch 1.50mm hook



Finishing

