

29-16 Lace Stripe Sweater



Suggested yarn:

- Pierrot Yarns Yuttari Silky [60% ramie, 20% silk, 15% rayon; 112 yds/102m per 1.41 oz./40g skein];
 - color #61 off white, 3 skeins [120g]
 - color #69 light purple, 4 skeins [140g]

Tools/Notions:

- 3.0mm (US 3) and 3.3mm (approx. US 4) knitting needles or sizes necessary to achieve gauge
- 3.0mm (US 3) double-pointed or circular knitting needles or size necessary to achieve gauge

Finished measurements:

- bust 92cm/36.22"
- cross back width 34cm/13.39"
- back length 53.5cm/21.06"
- sleeve length 43.5cm/17.13"

Gauge (10cm/4" square):

- pattern stitch: 20 sts and 31 rows

Gauge may vary according to individual knitting style. Change needle size if necessary to achieve gauge. Alternatively, rework pattern with your own gauge measurements.

Summary

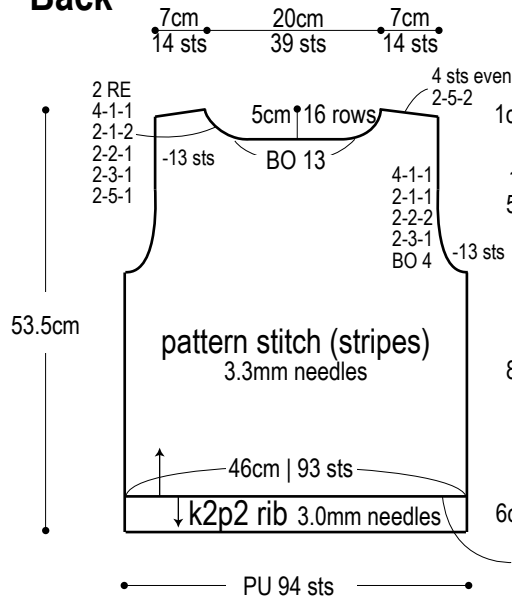
Body & sleeves: Cast on with crochet provisional cast-on method. Work stripes in pattern stitch, referring to schematic/chart for color sequence. Do not bind off shoulder stitches; place live stitches on stitch holder until finishing. Shape sleeves by working lifted increases at edges. Remove provisional cast-on edges from hem & cuffs, picking up live stitches as you go. Work edging in k2p2 ribbing. Bind off with 2x2 tubular bind-off method.

Finishing: Seam shoulders with three-needle bind-off method. Seam sides and sleeve undersides with mattress stitch. Seam sleeve to body with crochet slip stitch seam. Pick up stitches around neckline; work collar in k2p2 ribbing in the round. Bind off with 2x2 tubular bind-off method.

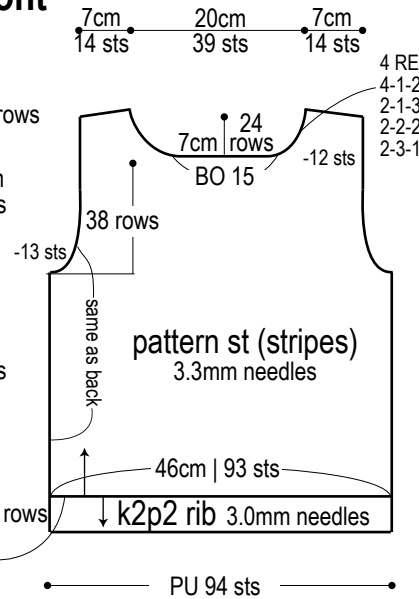
Abbreviations:

BO = bind off
k = knit
p = purl
PU = pick up
RE = row(s) even
= rows-stitches-times

Back

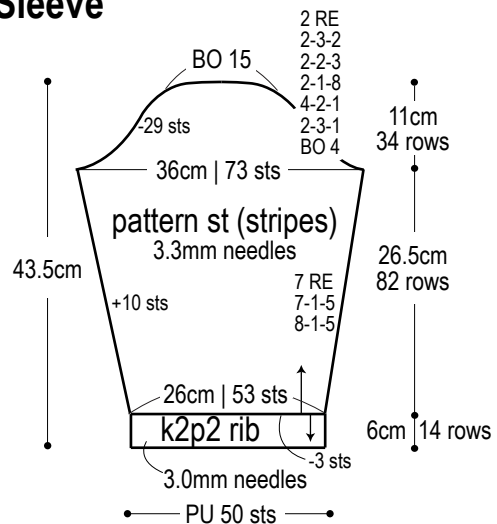


Front

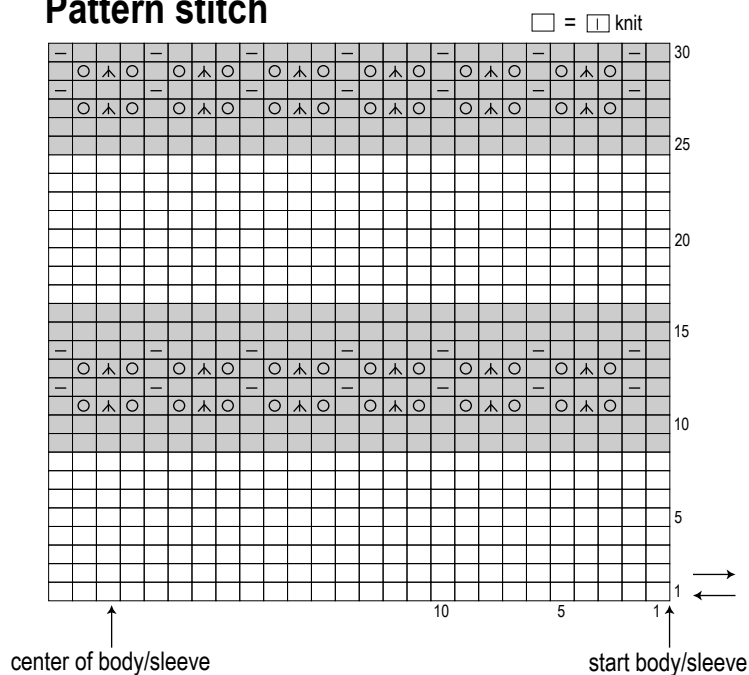


※Use color #69 light purple for hem & cuff k2p2 ribbing.

Sleeve

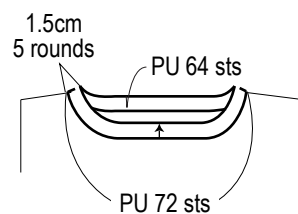


Pattern stitch



Collar: k2p2 ribbing

3.0mm DPNs, #69 light purple



□ = color #61 off white
■ = color #69 light purple