

215s-01 Blouse Dress



Suggested yarn:

- Pierrot Yarns Silk Garden Luxe [100% silk; 208 yds/190m per 1.41 oz./40g skein]; color #103 English ivy
 - medium: 11 skeins [410g]
 - large: 12 skeins [450g]

Tools/Notions:

- 2.0mm (US steel hook #4) and 2.5mm (approx. US B or C) crochet hooks or sizes necessary to achieve gauge
- 1 button (11.5mm/0.45")
- transparent elastic reinforcement thread

Finished measurements:

- | | |
|--------------------------------|--------------------------------|
| • medium: | • large: |
| • bust 90cm/35.43" | • bust 95cm/37.40" |
| • cross back width 33cm/16.14" | • cross back width 33cm/16.14" |
| • back length 94.5cm/19.29" | • back length 94.5cm/19.29" |

Gauge (10cm/4" square):

- pattern stitch (with 2.5mm hook): 23 sts and 15 rows

Gauge may vary according to individual crochet style. Change hook size if necessary to achieve gauge. Alternatively, rework pattern with your own gauge measurements.

Summary

✳️**Note:** Like all Japanese patterns, stitch counts given here for foundation chains do **not** include any chain sts needed for turning posts.

Body: Work foundation chain to begin, then work in pattern stitch, dc, and then pattern stitch again. While working dc section, use reinforcement thread together with yarn.

Finishing: Seam shoulders with chain seam (alternating chain st and slip st as needed to maintain pattern). Seam sides with chain seam as well. Work edging A in the round around neckline and armholes. Work edging B in the round around hem.

✳️**regular(modified) 3-hdc bobble stitch:** YO and pull up a loop 3 times. regular: YO and draw loop through all 3 sts on hook. (modified: YO and draw loop through all but last st on hook. YO once more and draw through 2 sts on hook.

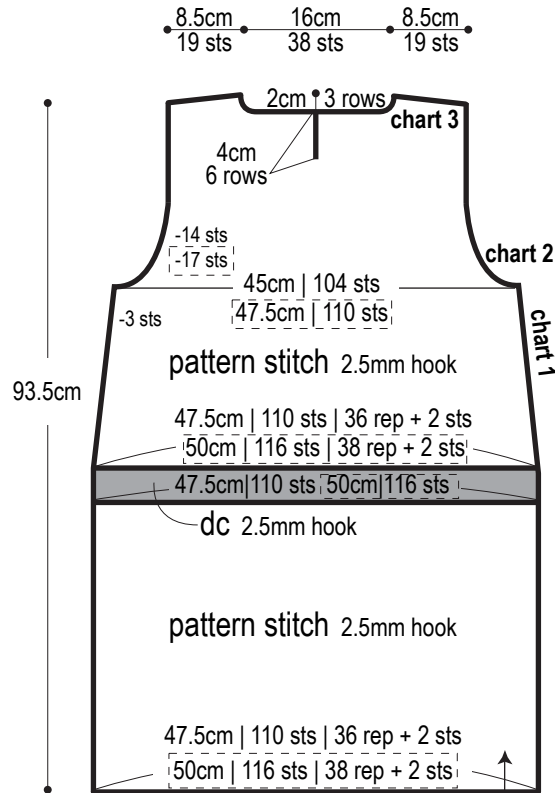
Abbreviations:

ch = chain dc = double crochet (US) hdc = half double crochet (US) rep = pattern repeat(s) sc = single crochet (US) YO = yarn over

※ [] = large size

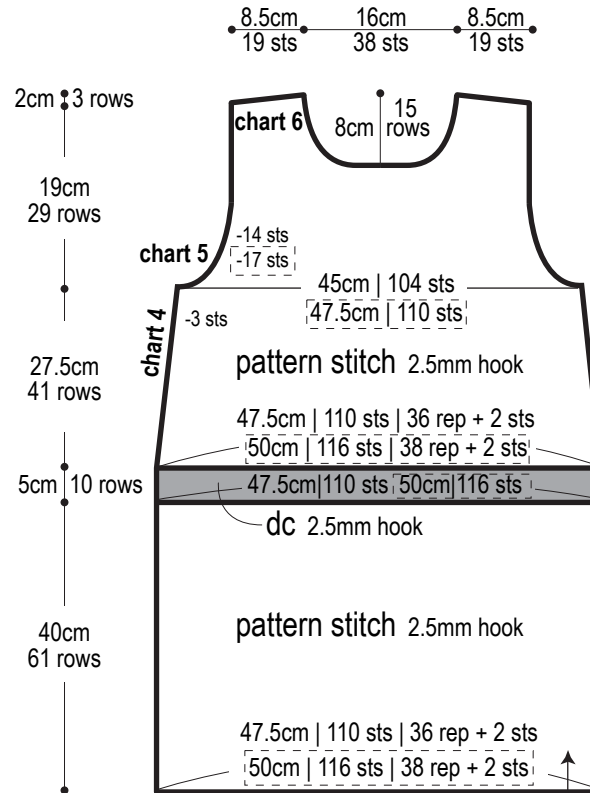
If only one set of numbers is given, it refers to both sizes.

Back



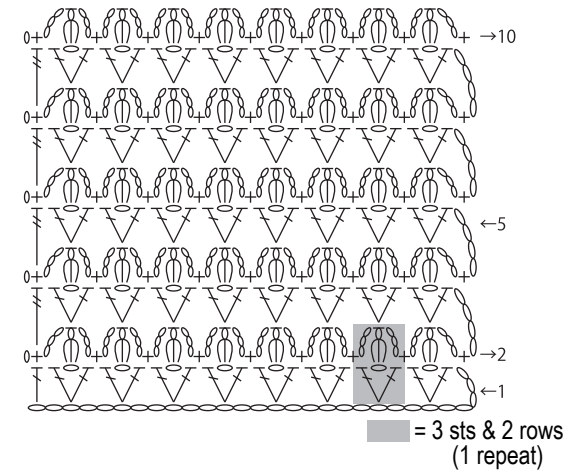
※Large size: increase 1 rep (3 sts) per size.

Front

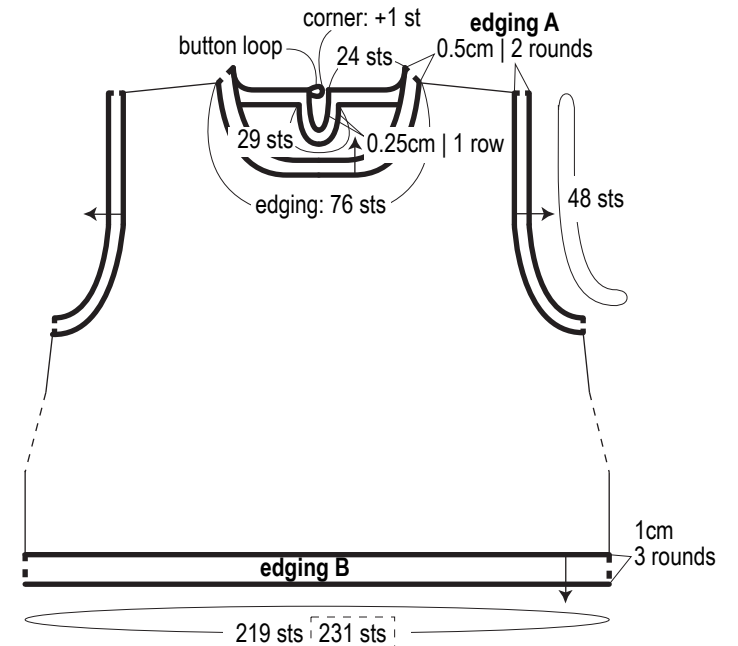


■ = hold reinforcement thread together with yarn

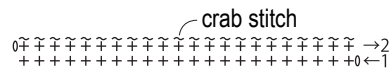
Pattern stitch 2.5mm hook



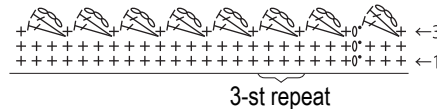
Armhole & neckline edging 2.0mm hook



Edging A 2.0mm hook

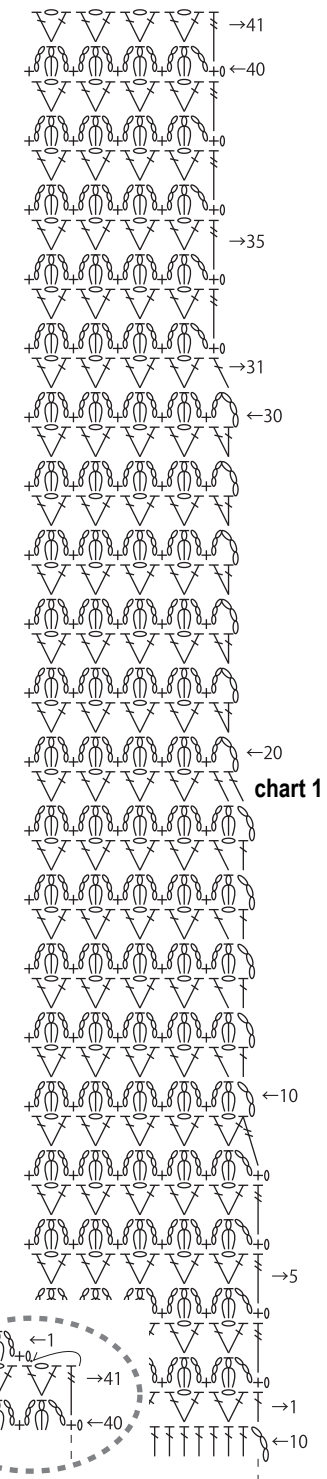
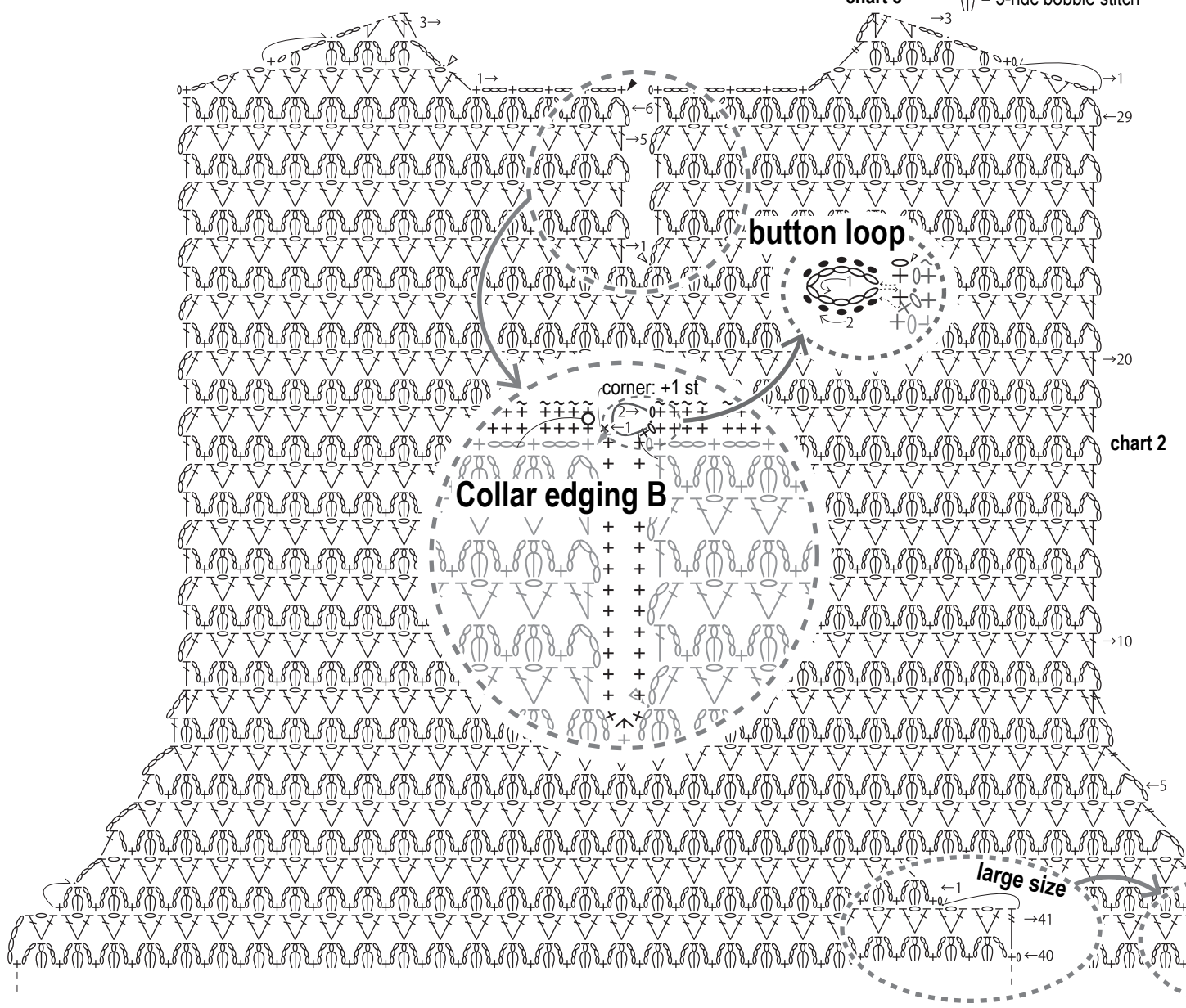


Edging B 2.0mm hook



- ◁ = join yarn
- ▶ = cut yarn
- ↷ = carry yarn
- ⦶ = modified 3-hdc bobble st
- ⦶ = 3-hdc bobble stitch

Back 2.5mm hook



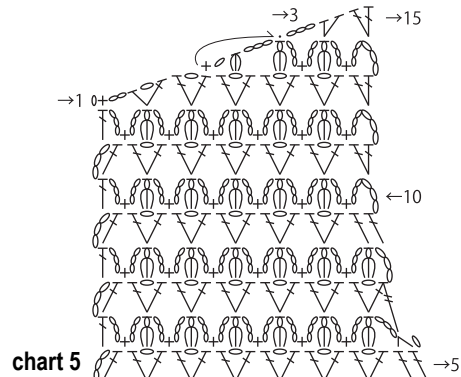
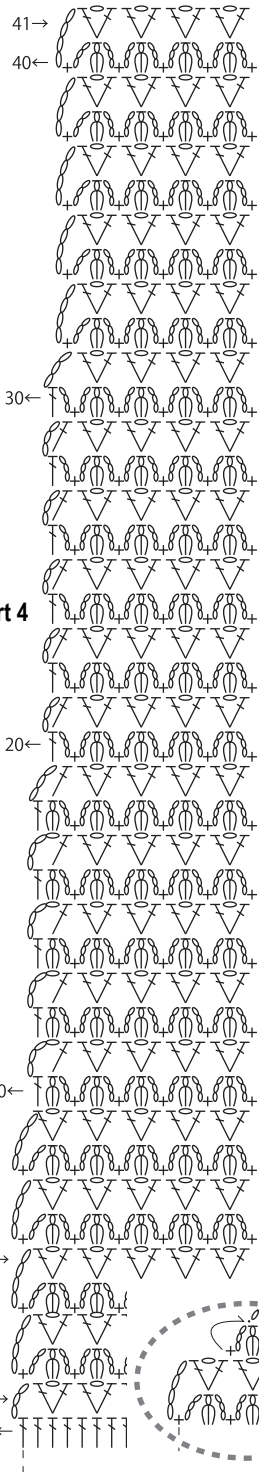


chart 5

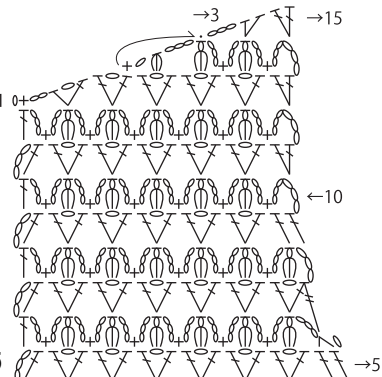


chart 6

Front 2.5mm hook

front center

