

# 215s-14 Amijin Turban



a (Ladies)



b (Ladies)



c (Kids)

## Suggested yarn:

- Pierrot Yarns Amijin Ramie Blend [80% cotton, 20% ramie; 79 yds/72m per 1.06 oz./30g skein];
  - version A (ladies):
    - color #4 lavender gray, 1 skein [15g]
    - color #8 dust brown, 1 skein [15g]
  - version B (ladies):
    - color #6 frosty gray, 1 skein [15g]
    - color #8 dust brown, 1 skein [15g]
  - version C (kids):
    - color #7 grandrelle beige, 1 skein [10g]
    - color #11 turquoise, 1 skein [10g]

## Tools/Notions:

- 3.0mm (approx. US C or D) crochet hook or size necessary to achieve gauge
- 131cm/51.57" elastic (3mm/0.12" wide)

## Finished measurements:

- Please see finishing schematics.

## Gauge (10cm/4" square):

- pattern stitch: 21.5 sts and 10 rows

*Gauge may vary according to individual crochet style. Change hook size if necessary to achieve gauge. Alternatively, rework pattern with your own gauge measurements.*

## Summary

❖**Note:** Like all Japanese patterns, stitch counts given here for foundation chains do **not** include any chain sts needed for turning posts.

**Body of turban:** Work foundation chain to begin, then work in pattern stitch according to chart using colors indicated. For each turban, make 2 pieces.

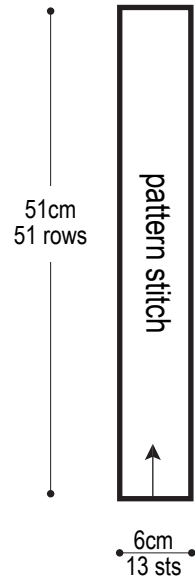
**Finishing:** For each turban, fold 2 pieces in half, looping them around each other as shown in finishing schematic. Seam long edges as shown, leaving loop section unseamed. Thread elastic through stitches of wrong side. Place ends together and seam with whipstitch. Knot ends of elastic.

## Abbreviations:

ch = chain      RS = right side      WS = wrong side

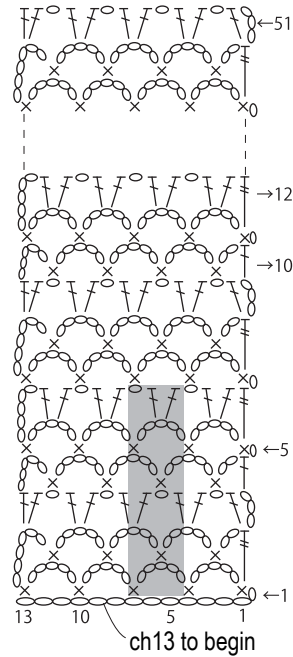
# Turban 3.0mm hook


## Ladies' versions A & B



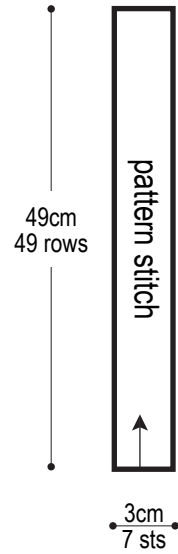
version A: 2 strands  
colors 4 & 8

version B: 2 strands  
colors 6 & 8

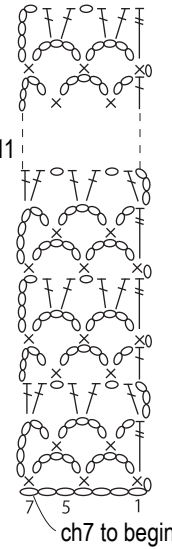


 = 3 sts & 6 rows  
(1 repeat)

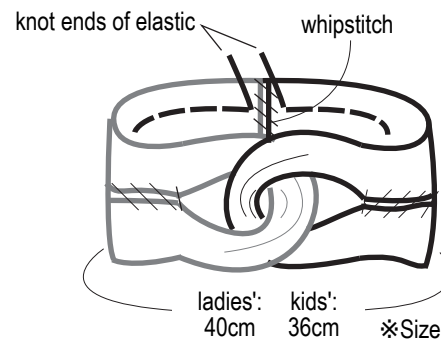
## Kids' version C



2 strands  
colors 7 & 11



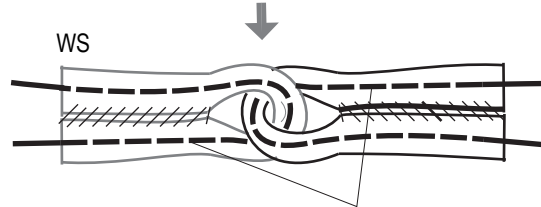
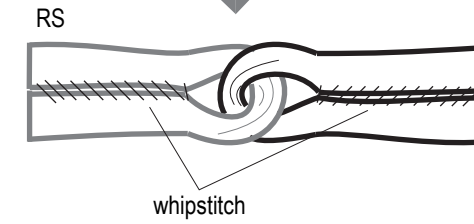
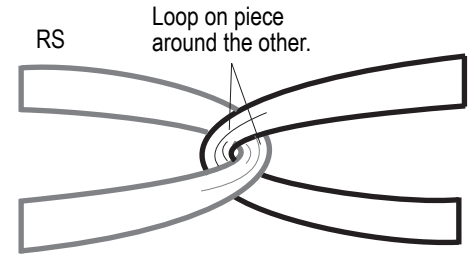
## Finished item



ladies': 40cm  
kids': 36cm

※Size after inserting elastic.

## Finishing



Thread elastic through stitches on  
wrong sides, taking care that it  
doesn't show through on right side.

ladies' versions: 45cm  
kids' version: 41cm } length of elastic  
(tie at ends)