

# 215s-02 Topper Cardigan



## Suggested yarn:

- Pierrot Yarns Beauty Silk Cotton [90% cotton, 10% silk; 180 yds/165m per 1.06 oz./30g skein];
  - medium: color #12 lavender, 13 skeins [370g]
  - large: color #12 lavender, 14 skeins [400g]

## Tools/Notions:

- 2.7mm (approx. US 2) and 3.0mm (US 3) knitting needles or sizes necessary to achieve gauge
- 2.7mm (approx. US 2) circular knitting needle (80cm/31.50" or longer)
- cable needle

## Finished measurements:

- |                                  |                             |                                  |                             |
|----------------------------------|-----------------------------|----------------------------------|-----------------------------|
| • medium:                        | • back length 75cm/29.53"   | • large:                         | • back length 75cm/29.53"   |
| • bust 93.5cm/36.81"             | • sleeve length 53cm/20.87" | • bust 101cm/39.76"              | • sleeve length 54cm/21.26" |
| • cross back width 34.5cm/13.58" |                             | • cross back width 36.5cm/14.37" |                             |

## Gauge (10cm/4" square):

- pattern stitch (with 3.0mm needles): 32 sts and 41 rows
- k1p1 ribbing (with 2.7mm needles): 33 sts and 42 rows

*Gauge may vary according to individual knitting style. Change needle size if necessary to achieve gauge. Alternatively, rework pattern with your own gauge measurements.*

## Summary

**Back, right front, & sleeves:** Cast on with long-tail cast-on method. Work in k1p1 ribbing and then in pattern stitch. On right and left front pieces, work mouth of pocket with waste yarn in contrasting color. Place stitches at neckline on stitch holders. Reverse shaping of right front for left front. Seam shoulders with crochet slip stitch seam.

**Hood:** Place neckline stitches on stitch holders back onto needles; work hood in pattern stitch, increasing and decreasing as indicated. Bind off when finished.

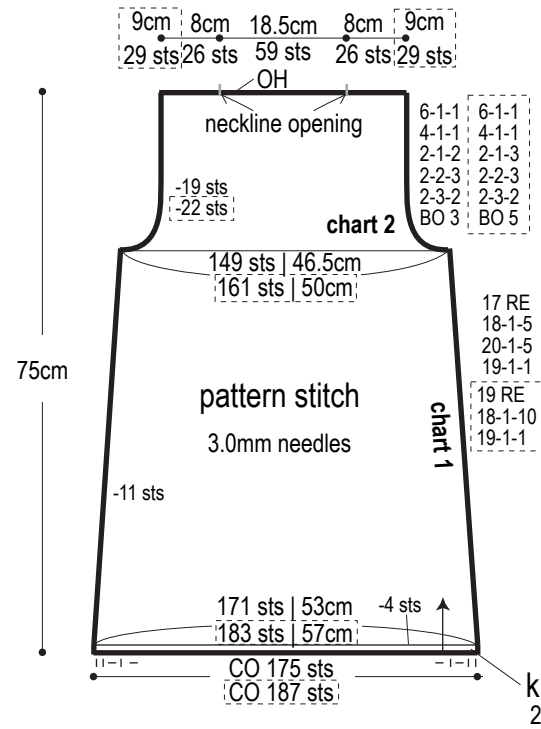
**Finishing:** Pick up stitches along front edges and hood edge; work edging in k1p1 ribbing. Bind off in pattern. With right sides facing each other, seam top of hood (along both bound-off stitches and edges of k1p1 ribbing section) with crochet slip stitch seam. Seam sides and sleeve undersides with mattress stitch. Seam sleeves to body with crochet slip stitch seam.

**Pockets:** Remove waste yarn from pocket mouth area and place stitches on needles. Following schematic, work lower pocket in k1p1 ribbing and upper pocket in stockinette stitch. Bind each part of pocket off as you finish it. Seam mouth of pocket to body from right side using mattress stitch. Seam back of pocket to body from wrong side using whipstitch.

## Abbreviations:

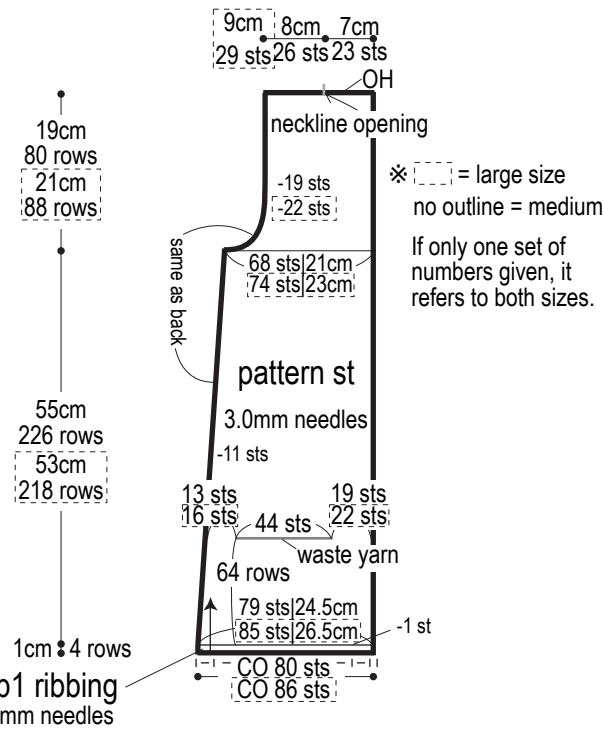
BO = bind off      CO = cast on      k = knit      OH = on hold (place on stitch holder)      p = purl      PU = pick up      RE = row(s) even      st st = stockinette stitch  
### = rows-stitches-times

## Back

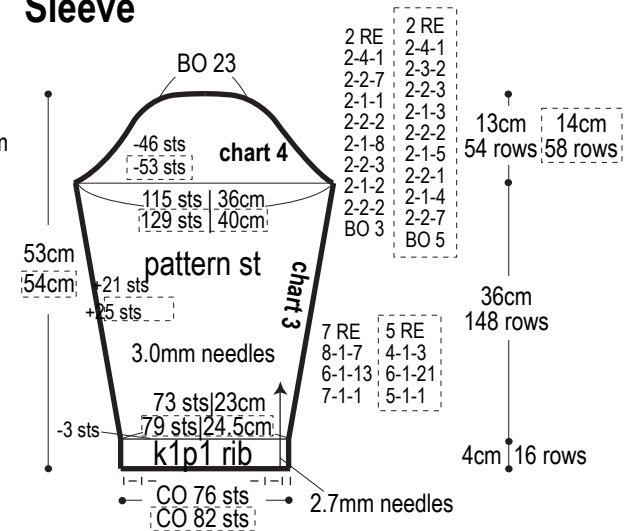


## Right front

\*Reverse shaping for left front.



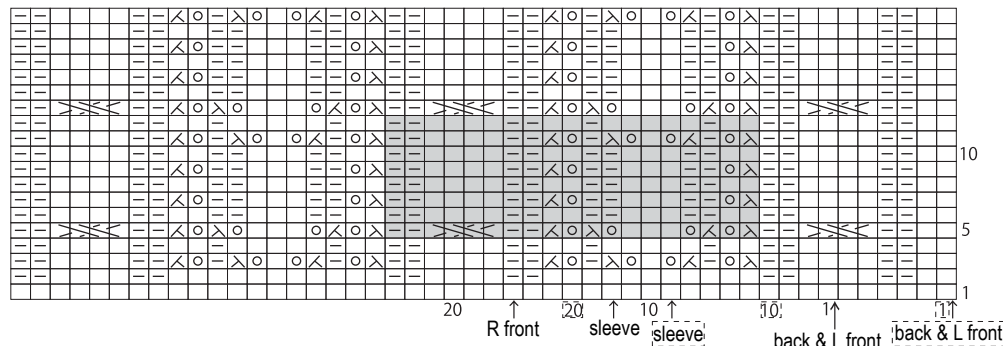
## Sleeve



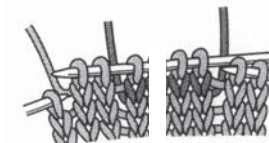
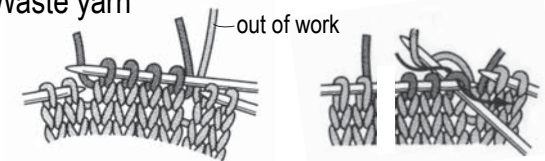
## Pattern stitch A 3.0mm needles

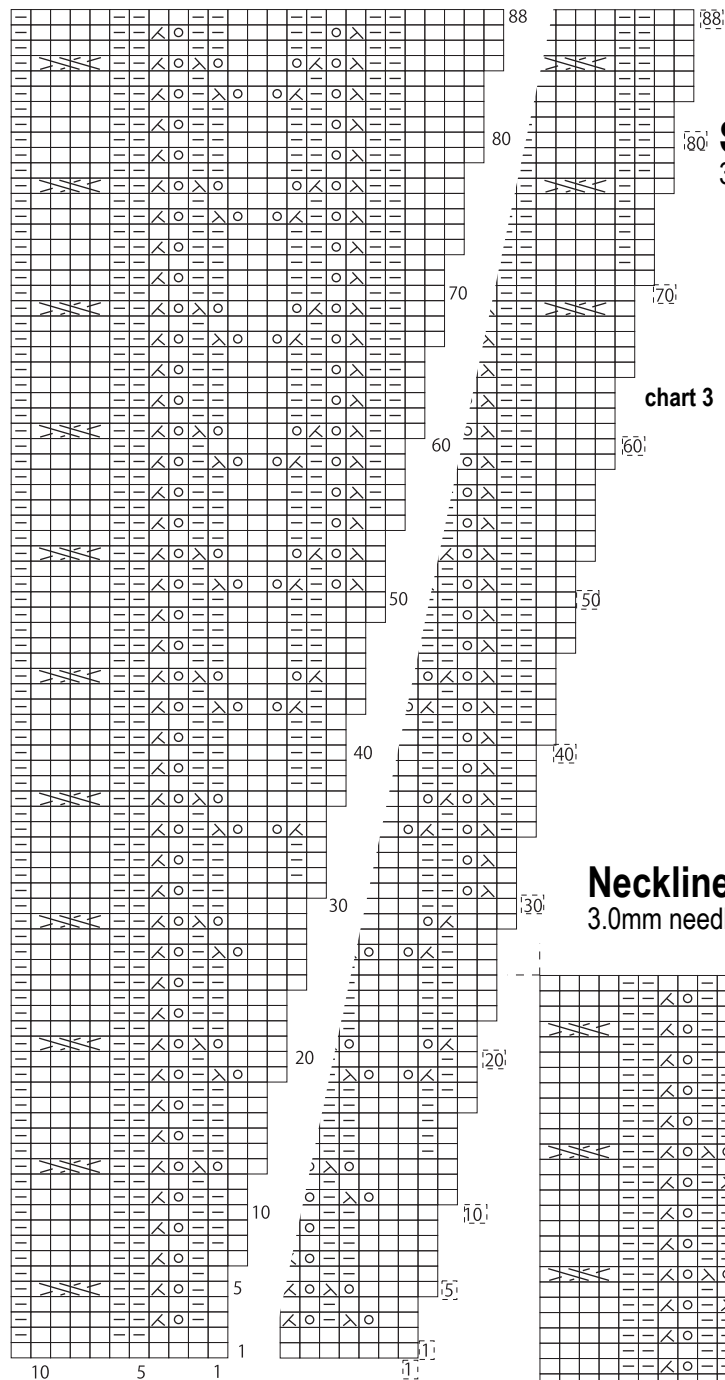
■ = 1 repeat (19 sts & 8 rows)

↑ = start here



## Waste yarn





## Sleeve increases 3.0mm needles

□ = 1 knit

chart 3

## Neckline 3.0mm needles

□ = 1 knit

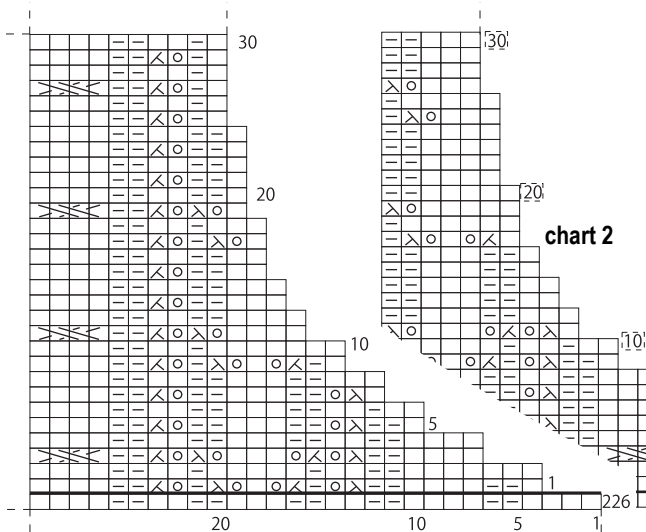


chart 2

□ = 1 knit

## Side of body 3.0mm needles

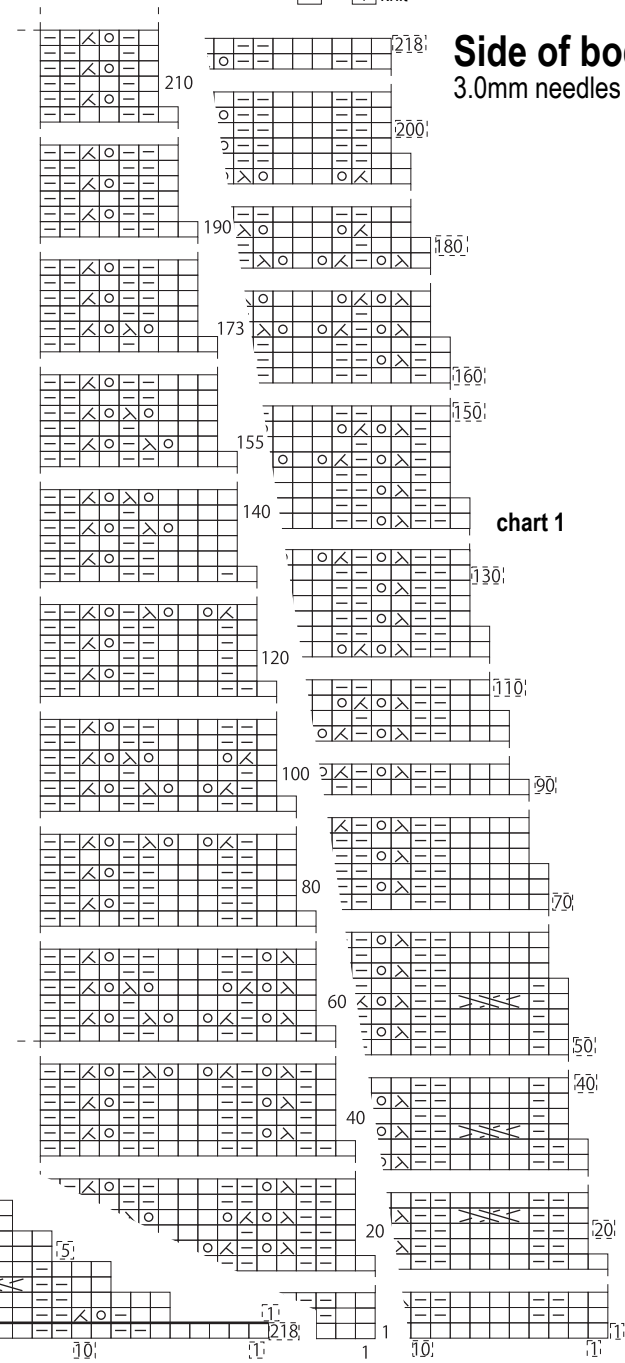
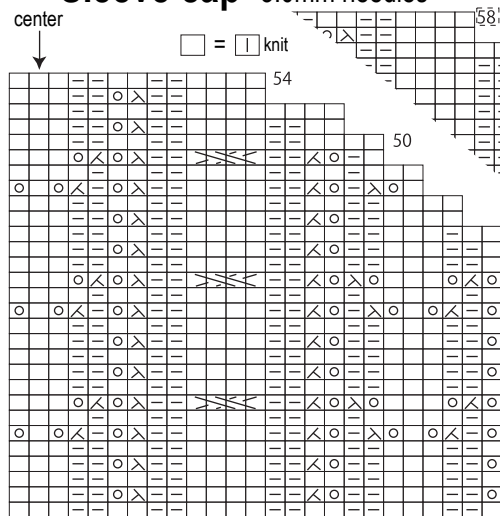


chart 1

## Sleeve cap 3.0mm needles



※ [ ] = large size  
no outline = medium

If only one set of numbers given, it refers to both sizes.

## Back of pocket

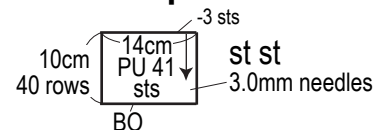
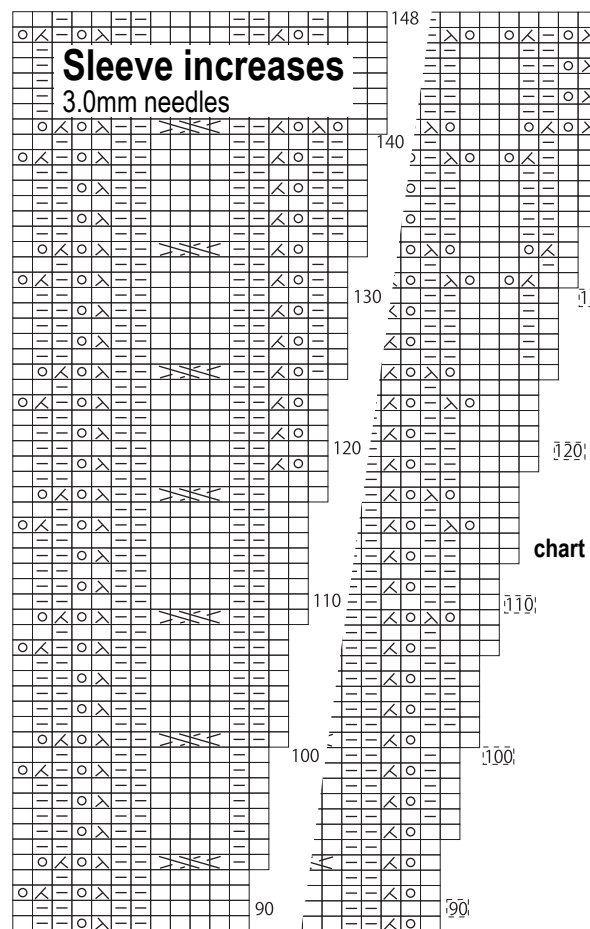


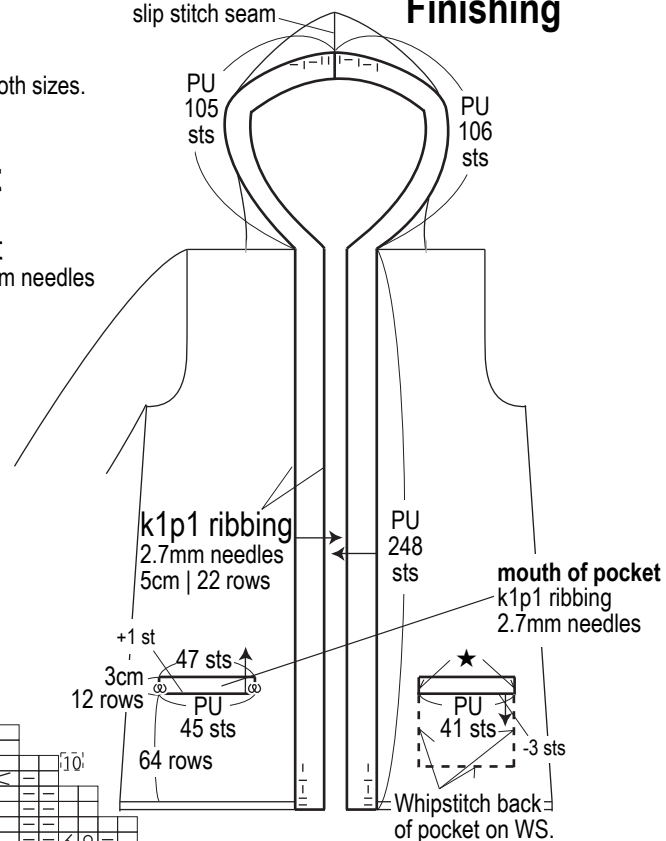
chart 4

## Sleeve increases 3.0mm needles



slip stitch seam

## Finishing

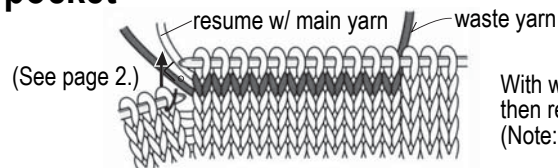


∞ = backwards loop cast-on increase

★ = mattress stitch

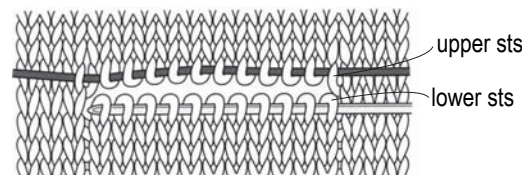
## Set-in pocket

How to work a pocket with its mouth set into the fabric and with an internal pouch.

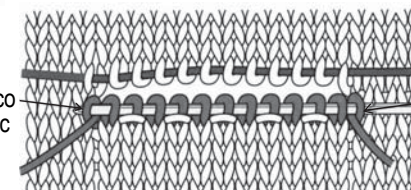


With waste yarn, knit number of sts required, then resume knitting with main yarn.  
(Note: 44 sts in this pattern.)

blo inc =  
backwards  
loop cast-on  
increase



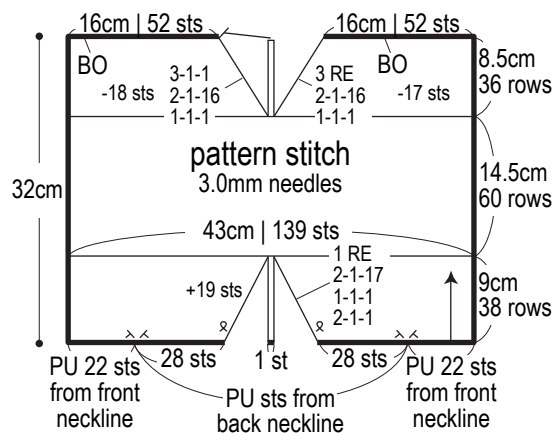
Remove waste yarn, transferring sts to needles.



With lower sts on needles, work mouth of pocket (47 sts) in k1p1 rib. With upper sts on needles, work back of pocket in st st (41 sts).

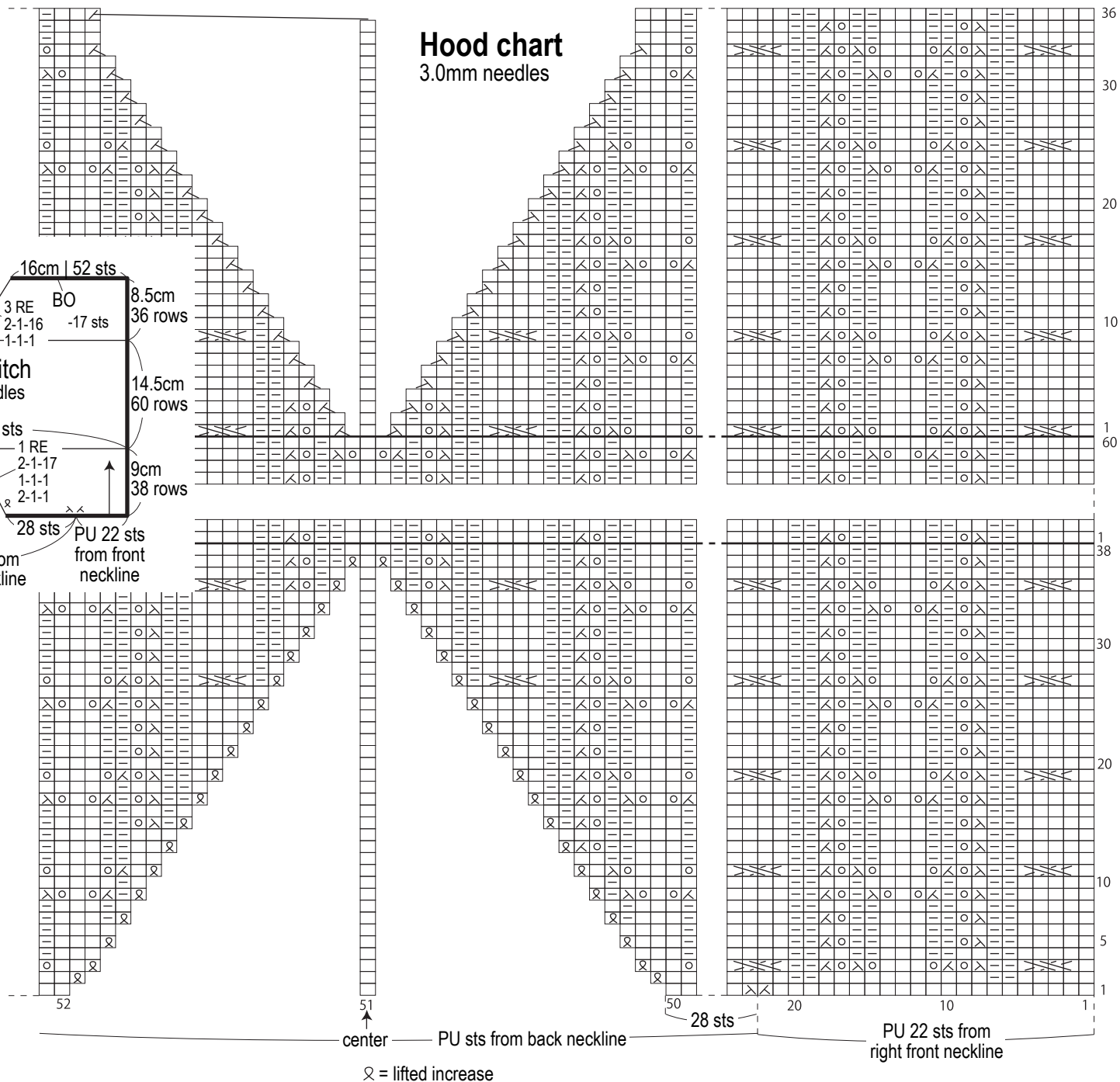
□ = □ knit

## Hood schematic



## Hood chart

3.0mm needles



⌘ = lifted increase