

Summer Shiny Snood

**Suggested yarn:**

- Pierrot Yarns Melange Silpalon [50% silk, 50% acrylic; 492 yds/450m per 3.53 oz./100g cone]; color #05 aquamarine, 2 cones [130g]

Tools/Notions:

- 2.0mm (US steel hook #4) lace crochet hook or size necessary to achieve gauge

Finished measurements:

- circumference 130cm/51.18"
- height 21cm/8.27"

Gauge (10cm/4" square):

- pattern stitch: 38 sts and 16 rows

Gauge may vary according to individual crochet style. Change hook size if necessary to achieve gauge. Alternatively, rework pattern with your own gauge measurements.

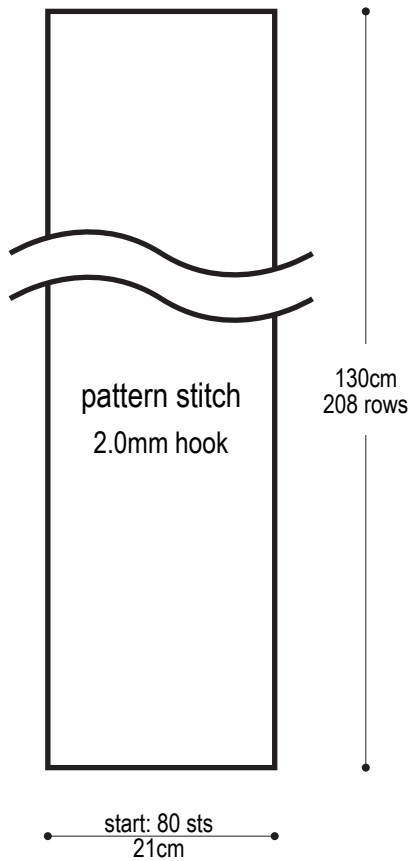
Summary

Work foundation chain to begin, then work in pattern stitch. With wrong sides facing each other, seam foundation edge to bind-off edge with whipstitch.

Abbreviations:

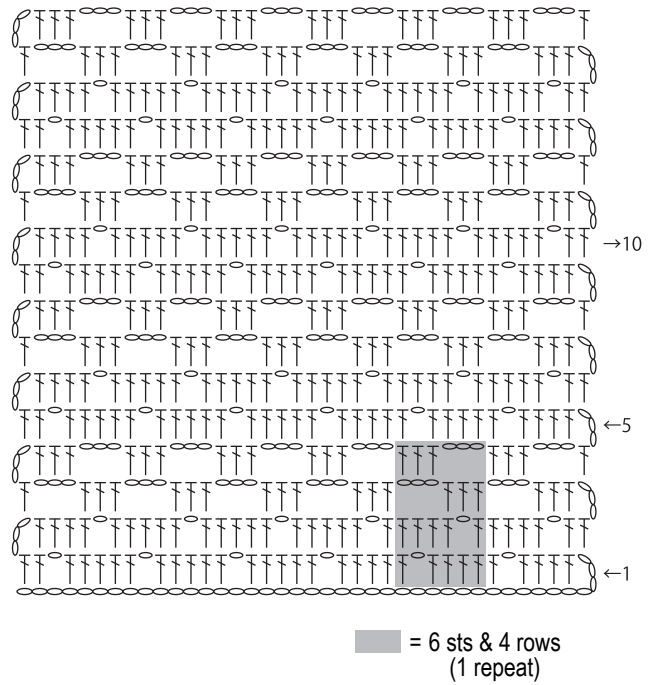
RS = right side

Cowl schematic



Pattern stitch

2.0mm hook



Finishing

