

Happy Picnic Set



Suggested yarn:

- **picnic sheet:** Pierrot Yarns Junmo Namibuto2/Pure Wool [100% wool; 79 yds/72m per 1.41 oz./40g skein];
 - color #3 lemon yellow, 4 skeins [130g]
 - color #25 pink, 4 skeins [130g]
 - color #8 moss, 2 skeins [65g]
 - color #17 blue purple, 2 skeins [65g]
 - color #23 rose-red, 2 skeins [65g]
 - color #9 olive green, 3 skeins [100g]
 - color #19 deep lavender, 4 skeins [125g]
 - color #24 grape, 2 skeins [55g]
 - color #26 cupid pink, 2 skeins [55g]

- **bottle bag:** Pierrot Yarns Tours [100% linen; 115 yds/105m per 1.06 oz./30g skein];
 - color #01 grage, 1 skein [30g]
 - color #04 framboise, 1 skein [small amount]
 - color #05 champagne soda, 1 skein [small amount]
 - color #08 Mandarin orange, 1 skein [small amount]

Tools/Notions:

- 2.0mm (US steel hook #4) and 4.0mm (US G) crochet hook or sizes necessary to achieve gauge
- 1 piece fabric for blanket backing (82cm/32.28" x 129.5cm/50.98")
- 2 pieces fabric for carrying case, each 18cm/7.09" by 67cm/26.38"
- binding tape (2.5cm/0.98" wide, 203cm/79.9" long)
- 2 snaps 1cm/0.39"

Finished measurements:

- Please see schematics.

Gauge (10cm/4" square):

- motif: large 9.5cm/3.74", small 4.5cm/1.77"
- pattern stitch: 33 sts and 16.5 rows

Gauge may vary according to individual crochet style. Change hook size if necessary to achieve gauge. Alternatively, rework pattern with your own gauge measurements.

Summary

✳️**Note:** refer to schematics for color sequences.

[Blanket] Large motifs: Work magic ring to begin, then crochet motifs, changing color when indicated. Starting from second motif, join motifs together on last round using slip stitch. Work edging around blanket in the round.

[Blanket] Backing: Cut fabric to measurements indicated. Fold seam allowance to inside; sew as indicated.

[Blanket] Carrying case: Cut 2 fabric pieces to measurements indicated. Fold seam allowance to inside; sew as indicated. Sew binding tap to case as indicated. Fasten snaps to case.

[Bottle bag] Small motifs: Work magic ring to begin, then crochet motifs, changing color when indicated. Starting from second motif, join motifs together on last round using slip stitch, ending with a tube of motifs.

[Bottle bag] Bottom & sides: Work magic ring to begin, then work in sc, increasing as indicated. Continue to sides, working in sc and pattern stitch. On fourth round of pattern stitch, join stitches to motif tube. Then work pattern stitch into other end of motif tube and continue working pattern stitch in the round. Where indicated, divide for handles and begin working each side separately. Continue to handles, working in chain st. Work edging in the round.

Abbreviations:

ch = chain hdc = half double crochet (US) m = magic ring/circle rep = pattern repeat(s) RS = right side
sc = single crochet (US) WS = wrong side

Large motif (make 104)

4.0mm hook

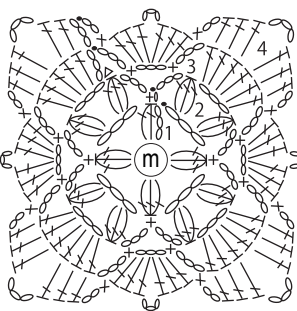
◁ = join yarn

motif A: make 35

motif B: make 35

motif C: make 34

9.5cm

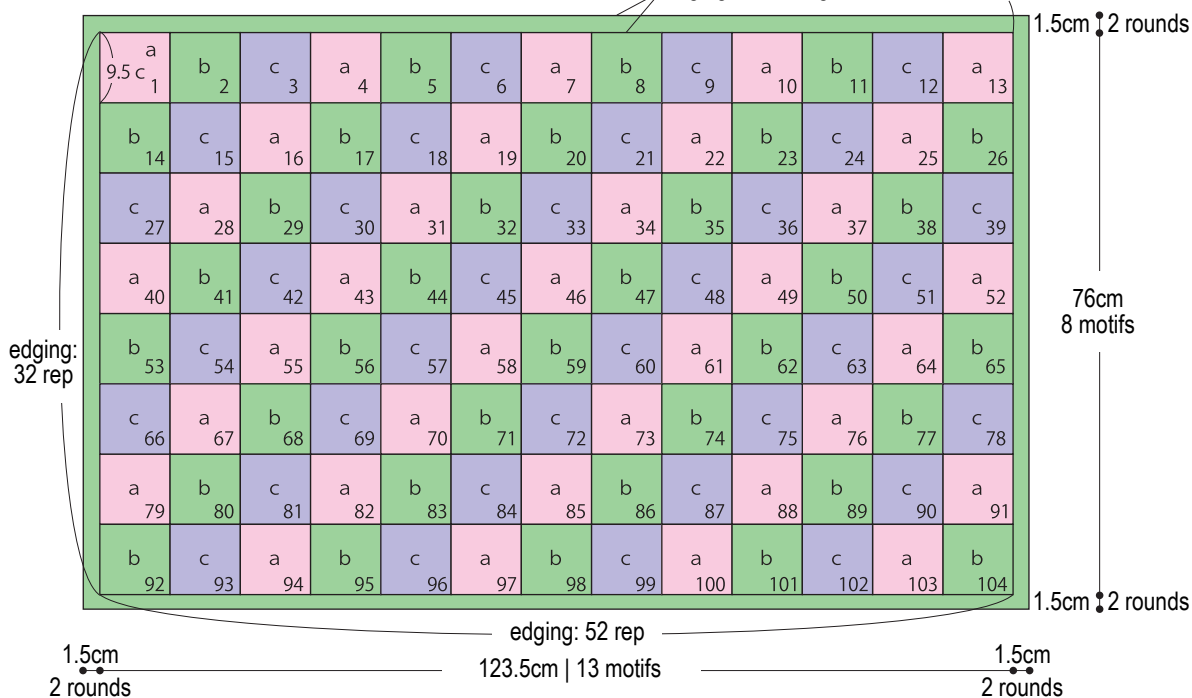


Picnic sheet

4.0mm hook

edging: #9 olive green

corner: +1 st



Color sequence

	motif A (make 35)	motif B (make 35)	motif C (make 34)
rounds 1 & 4	#25 pink	#3 cream lemon yellow	#19 deep lavender
round 2	#26 cupid pink	#9 olive green	#24 grape
round 3	#23 rose-red	#8 moss	#17 blue purple

Joining motifs & edging

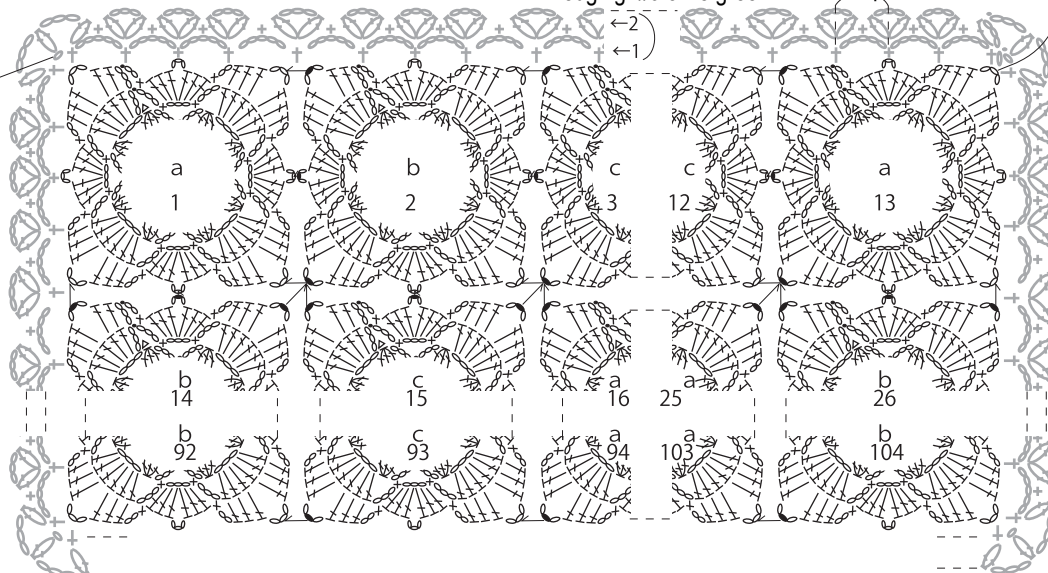
4.0mm hook

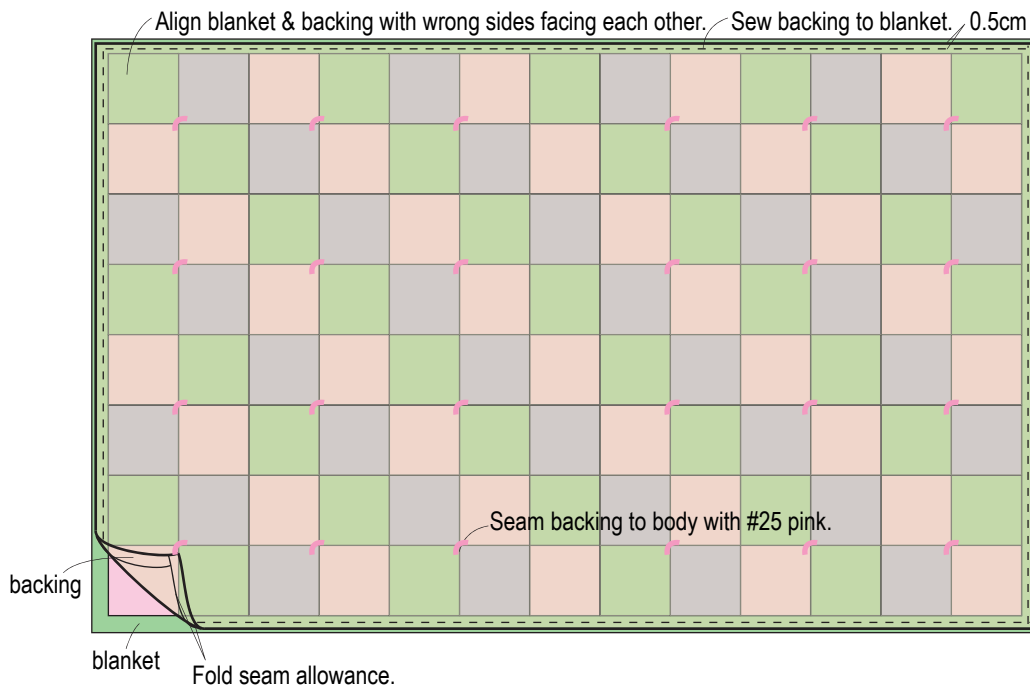
corner: +1 st

edging: #9 olive green

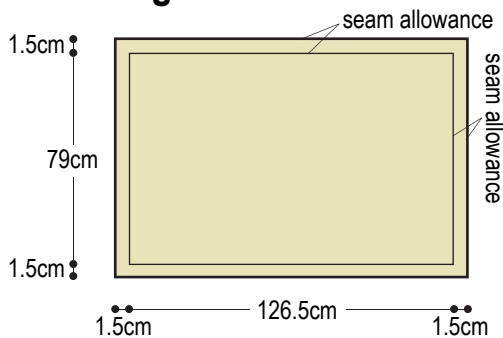
1 rep

start edging

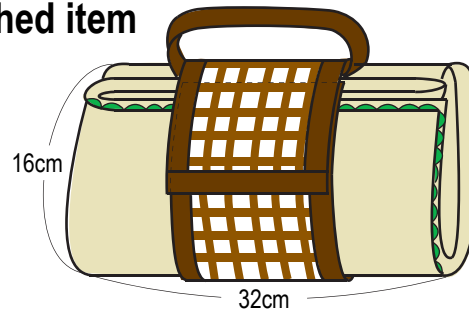




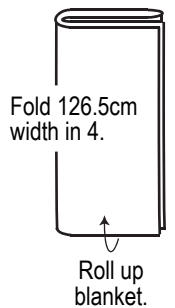
Backing



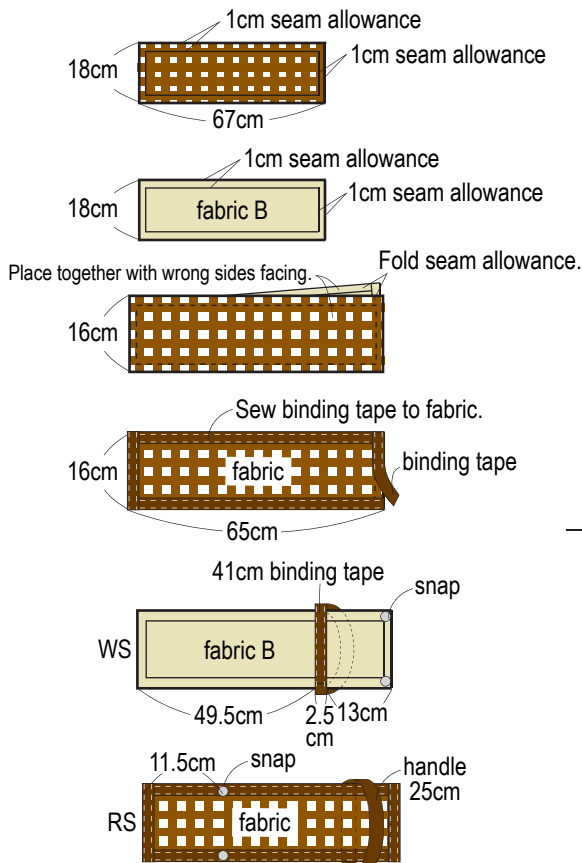
Finished item



How to fold up

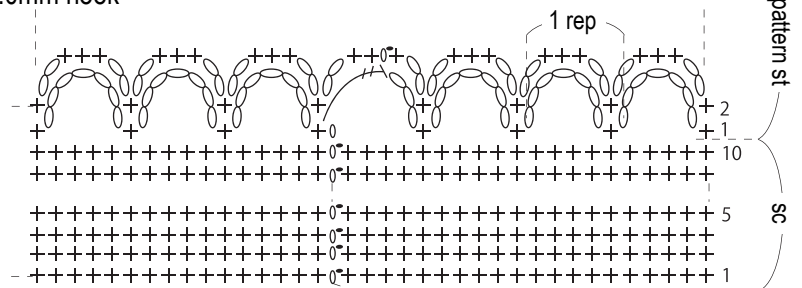


Blanket case



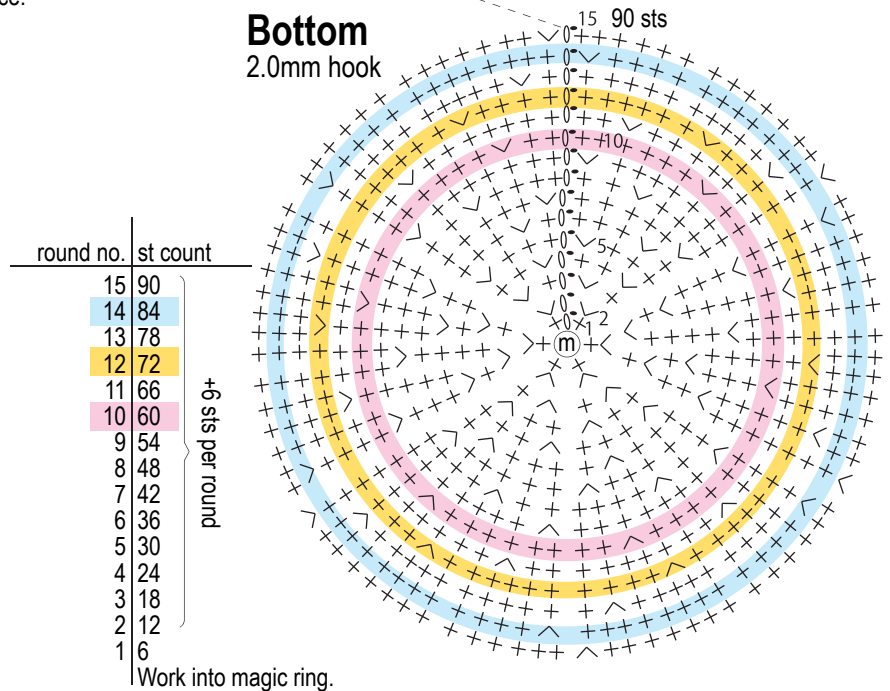
Side sc & pattern stitch

2.0mm hook



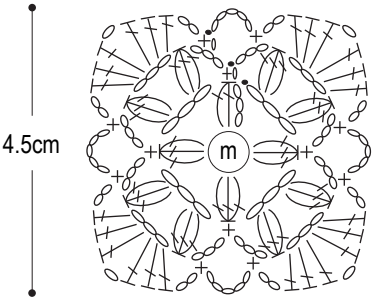
Bottom

2.0mm hook



Small motif (make 6)

2.0mm hook



	motif A (make 3)	motif B (make 3)
round 3	#04 framboise	#05 champagne soda
round 2	#08 Mandarin orange	#04 framboise
round 1	#05 champagne soda	#08 Mandarin orange

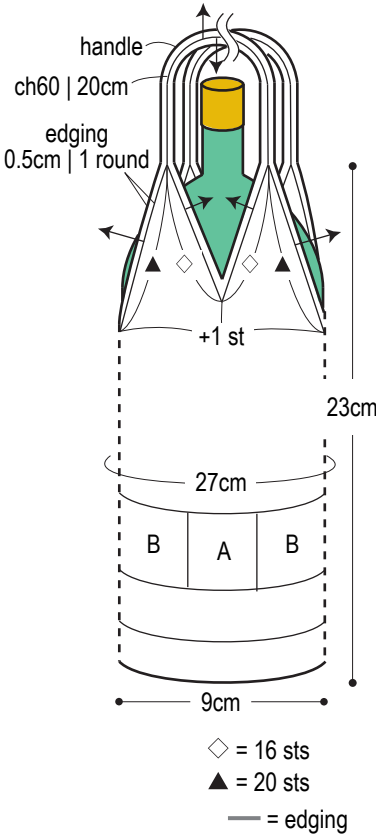
■ = #05 champagne soda

■ = #08 Mandarin orange

■ = #04 framboise

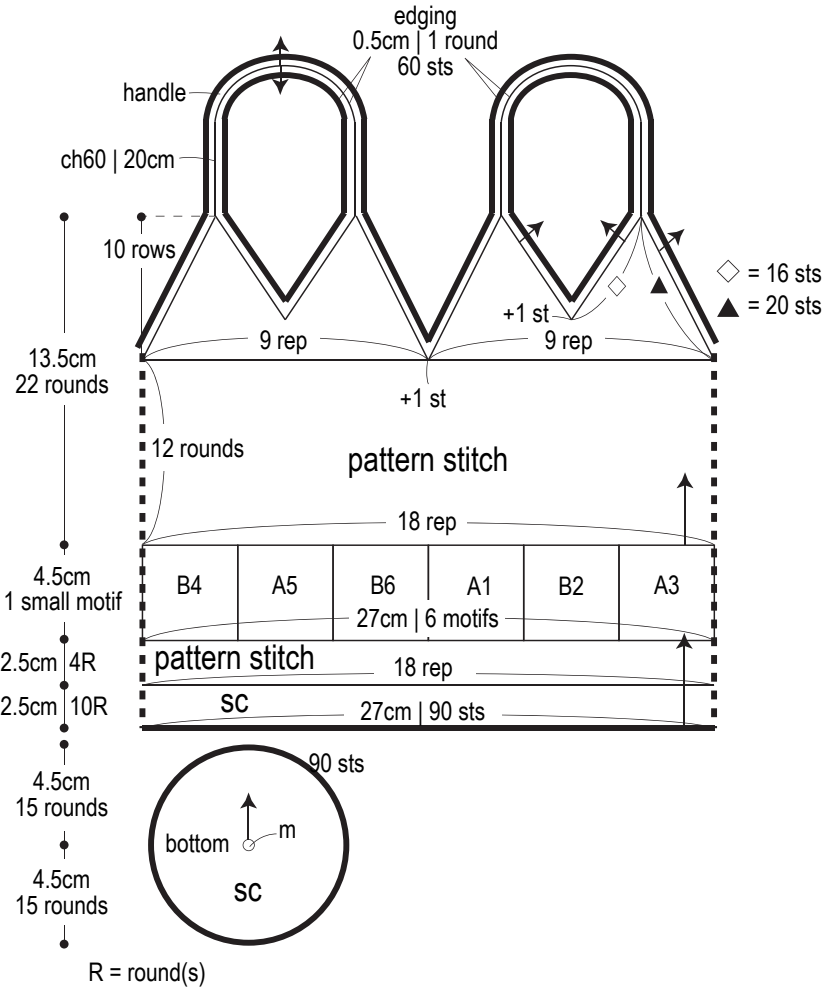
Elsewhere, use #01 grage.

Finishing



Bottle bag

2.0mm hook



2.0mm hook

2.0mm hook

