

Naname Line Snood



Suggested yarn:

- Pierrot Yarns Anouk Linen [100% linen; 131 yds./120m per 1.76 oz./50g cone];
 - color #01 greige, 1 cone [30g]
 - color #04 dark blue, 1 cone [30g]
 - color #08 silver grey, 1 cone [30g]

Tools/Notions:

- 3.5mm (US E) crochet hook or size necessary to achieve gauge

Finished measurements:

- circumference 68.5cm/26.97"
- width 21cm/8.27"

Gauge (10cm/4" square):

- pattern stitch: 21 sts and 9.5 rows

Gauge may vary according to individual crochet style. Change hook size if necessary to achieve gauge. Alternatively, rework pattern with your own gauge measurements.

Summary

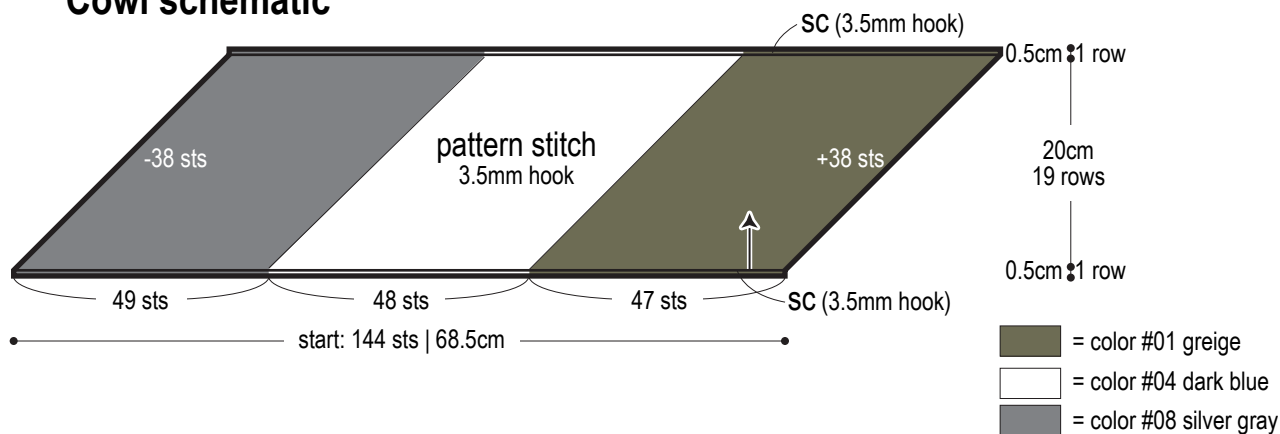
Cowl: Work foundation chain to begin, changing colors as indicated. Working into bottom loops of foundation chain (for first row only), work in sc and then pattern stitch, increasing at one end and decreasing at the other.

Finishing: With right sides facing each other, seam ends of cowl together with chain seam (alternating chain st and slip st as needed to maintain pattern).

Abbreviations:

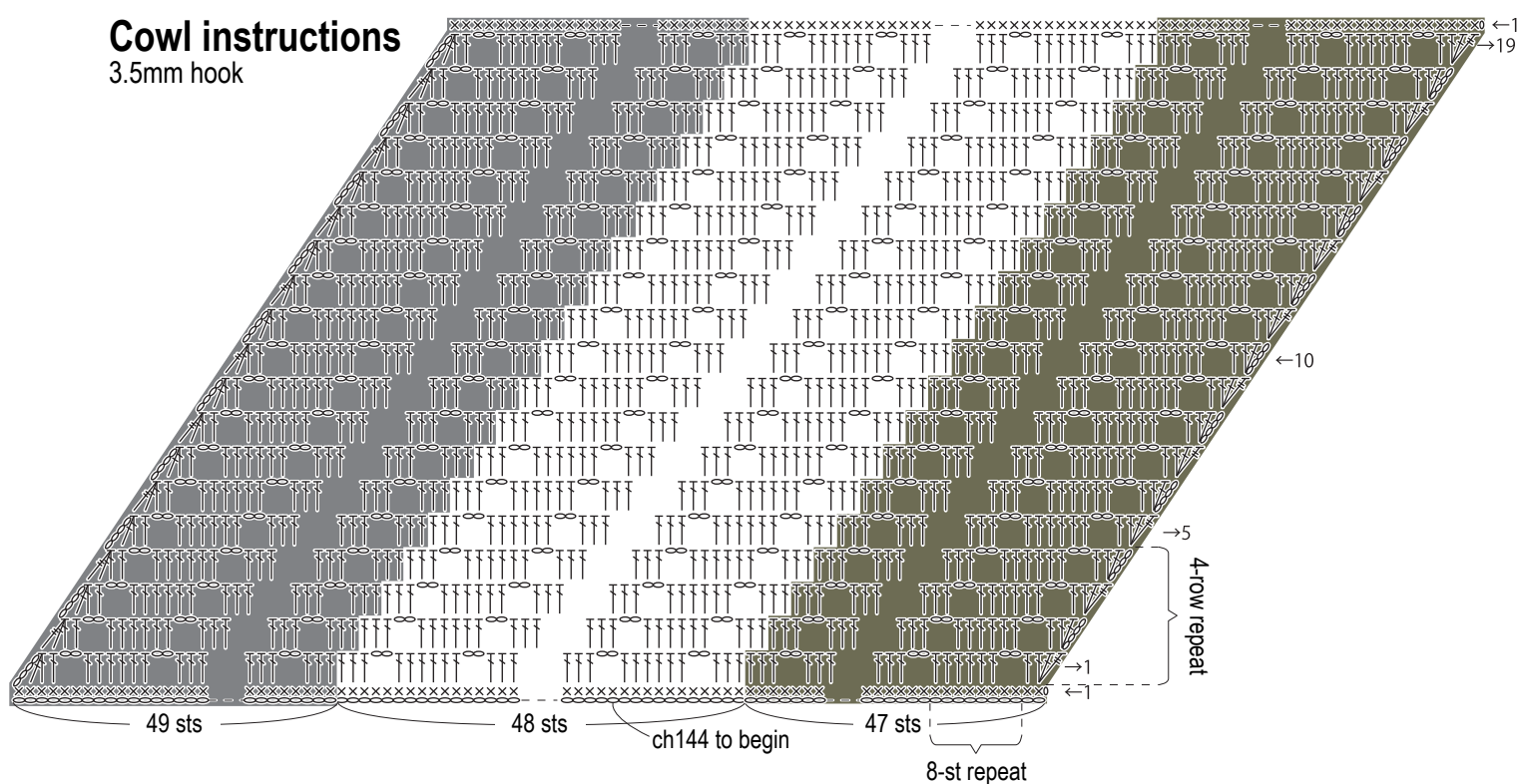
ch = chain
RS = right side
sc = single crochet (US)
st(s) = stitch(es)

Cowl schematic

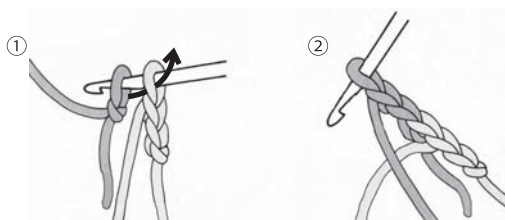


Cowl instructions

3.5mm hook



How to change color in foundation chain



Keeping out-of-work yarn in front, join new yarn color and draw up a loop (through both colors).

Finishing

