

# 578cs Crochet Cushion & Sachet



## Suggested yarn:

- Pierrot Yarns Beauty Silk Cotton [90% cotton, 10% silk; 180 yds/165m per 1.06 oz./30g skein];
  - cushion cover: color #01 white, 4 skeins [95g]
  - sachet: color #01 white, 1 skein [15g]

## Tools/Notions:

- 2.0mm (US steel hook #4) crochet hook or size necessary to achieve gauge
- pillow form 40cm/15.75" square
- 3 snaps (14mm/0.55")
- potpourri pouch (approx. 8cm/3.15")

## Finished measurements:

- Please refer to finishing schematic.

## Gauge (10cm/4" square):

- pattern stitches A & B, mesh stitch: 35 sts and 11.5 rows

*Gauge may vary according to individual crochet style. Change hook size if necessary to achieve gauge. Alternatively, rework pattern with your own gauge measurements.*

## Summary

**Cushion cover:** Work foundation chain to begin, then work front part of cushion in pattern stitch A. Work back pieces in mesh stitch and dc. Work 3 rounds of edging A around cushion, seam front and back pieces as you go by working through all layers on first round. Make sure that when seaming front & back pieces together, the wrong sides face each other (with dc side of back piece overlapping the other back piece). Fasten snaps to cushion cover.

**Sachet:** Work foundation chain to begin, then work in pattern stitch B. Make second piece identical to the first. With wrong sides facing each other, seam 3 sides (2 sides and foundation chain edge) together with edging B. Work edging C in the round along mouth of sachet (bind-off edges). Crochet cord and thread through sachet. Fill with potpourri.

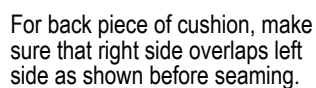
## Abbreviations:

ch = chain  
dc = double crochet (US)  
rep = pattern repeat(s)  
RS = right side  
WS = wrong side

2.0mm hook



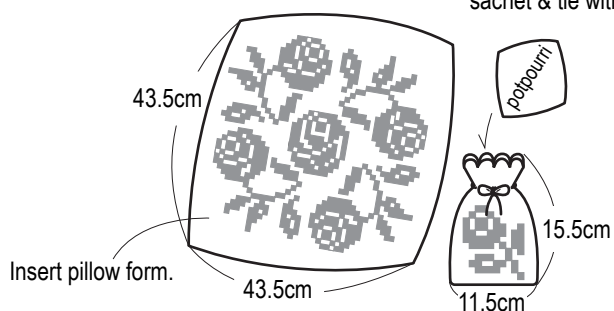
2.0mm hook



2.0mm hook

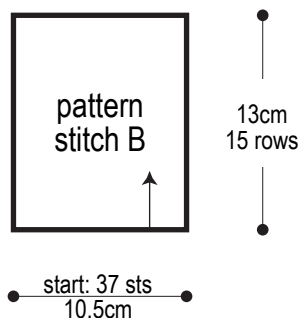


Insert potpourri pouch.  
Thread cord through  
sachet & tie with a knot.



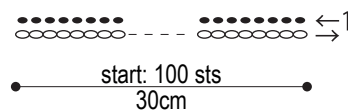
## Sachet (make 2)

2.0mm hook

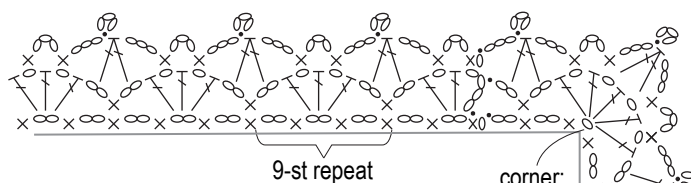


## Cord

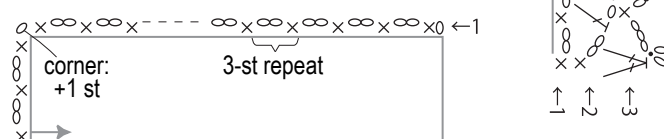
2.0mm hook



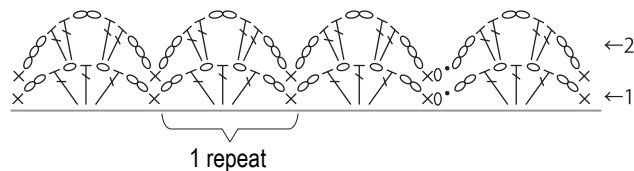
## Edging A 2.0mm hook



## Edging B 2.0mm hook

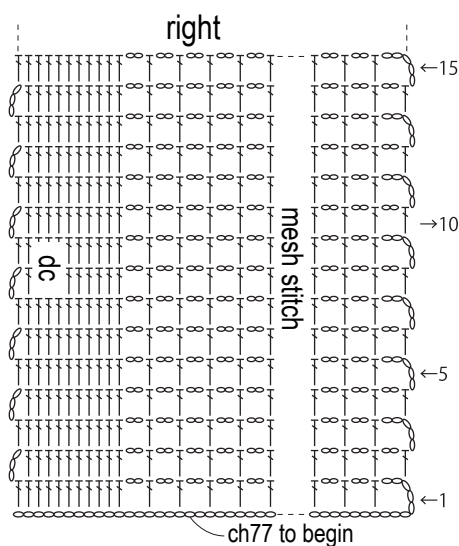
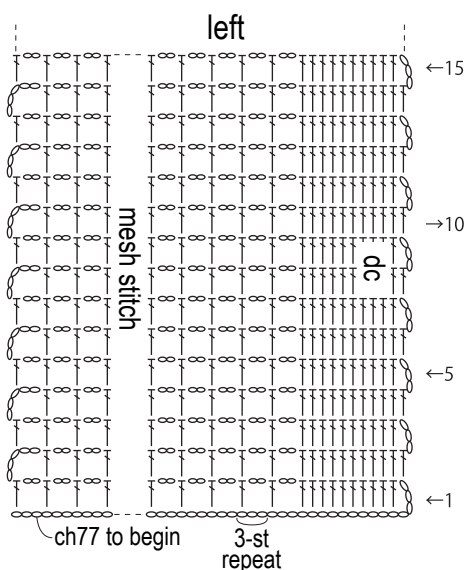


## Edging C 2.0mm hook



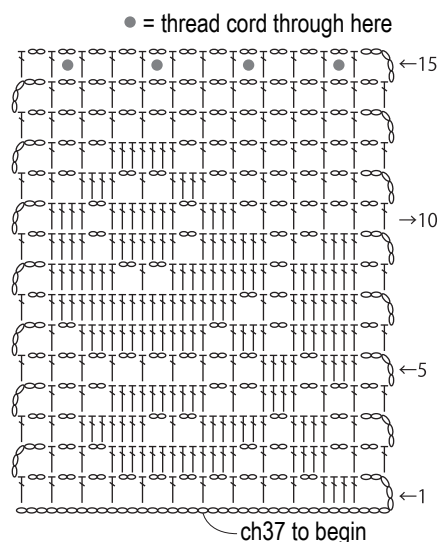
## Cushion cover: back side

2.0mm hook



## Sachet (make 2)

pattern stitch B, 2.0mm hook



# Cushion cover: front side

pattern stitch A, 2.0mm hook

