

# 372bag-2141130 Aran Bag



## Suggested yarn:

- Pierrot Yarns Downy Tam [72% wool, 21% mohair, 7% nylon; 105 yds/96m per 2.82 oz./80g skein];
  - color #03 antique green, 2 skeins [160g]
  - color #08 blue gray, 2 skeins [105g]

## Tools/Notions:

- 5.7mm (approx. US 9) knitting needles or size necessary to achieve gauge
- 5.0mm (US H) and 6.0mm (US J) crochet hooks or sizes necessary to achieve gauge
- cable needle
- 1 magnetic snap
- 1 button 15mm/0.59"
- lining fabric 60cm/23.62" x 60cm/23.62"
- 4 rectangle rings 30mm/1.18"
- thick paper or cardboard 30cm/11.81" x 12cm/4.72"

## Finished measurements:

- circumference 84cm/33.07"
- depth 23.5cm/9.25"

## Gauge (10cm/4" square):

- pattern stitch A: 20 sts and 20 rows
- pattern stitch B: 18.5 sts and 20 rows
- reverse stockinette stitch: 13.5 sts and 20 rows
- single crochet (US): 13.5 sts and 16 rows

*Gauge may vary according to individual knitting style. Change needle size if necessary to achieve gauge. Alternatively, rework pattern with your own gauge measurements.*

## Summary

**Sides:** Cast on with long-tail cast-on method. Work in stockinette stitch, reverse stockinette stitch, and pattern stitches A and B. Change to stockinette stitch, decreasing in first row. Bind off. Make second side piece. Seam sides together with mattress stitch. Crochet in slip stitch where indicated with 10.0mm hook.

**Bottom, belt, and handles:** Work foundation chain to begin, then work bottom in sc. Work 2 rounds of sc around edges of rectangular bottom piece. Insert belts into rectangle rings and sew each on in place on wrong side with whipstitch. Shape handles by increasing and decreasing as indicated, then seam sides of each handle together where indicated with whipstitch and right side facing you. Attach rectangle rings to bag.

**Finishing:** Sew belts and handles to sides of bag. Seam sides to bottom with whipstitch. Sew lining, then insert into bag. Fold bag sides to inside where indicated, then insert lining and seam to side of bag with whipstitch. Crochet button cord and loop cord; fasten to bag where indicated. Fasten snap to inside.

## Abbreviations:

BO = bind off

C3Fp = slip 2 sts to cable needle & hold in front; p1, k2 from cable needle

C3Bp = slip 1 st to cable needle & hold in back; k2, p1 from cable needle

C4Fp = slip 2 sts to cable needle & hold in front; p2, k2 from cable needle

C4Bp = slip 2 sts to cable needle & hold in back; k2, p2 from cable needle

ch = chain stitch

CO = cast on

k = knit stitch

p = purl stitch

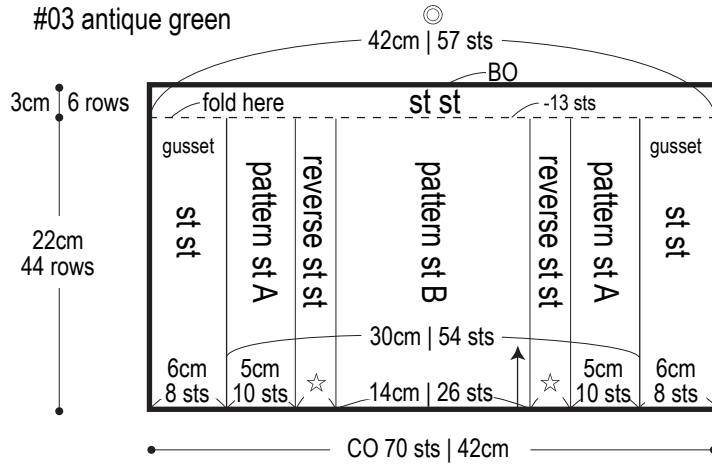
sc = single crochet (US)

sc2tog = single crochet (US) two stitches together

st st = stockinette stitch

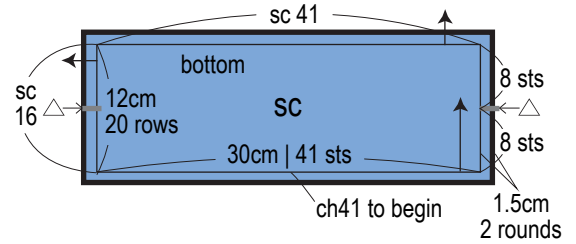
## Side (make 2)

5.7mm needles  
#03 antique green



## Bottom

5.0mm hook, #08 blue gray



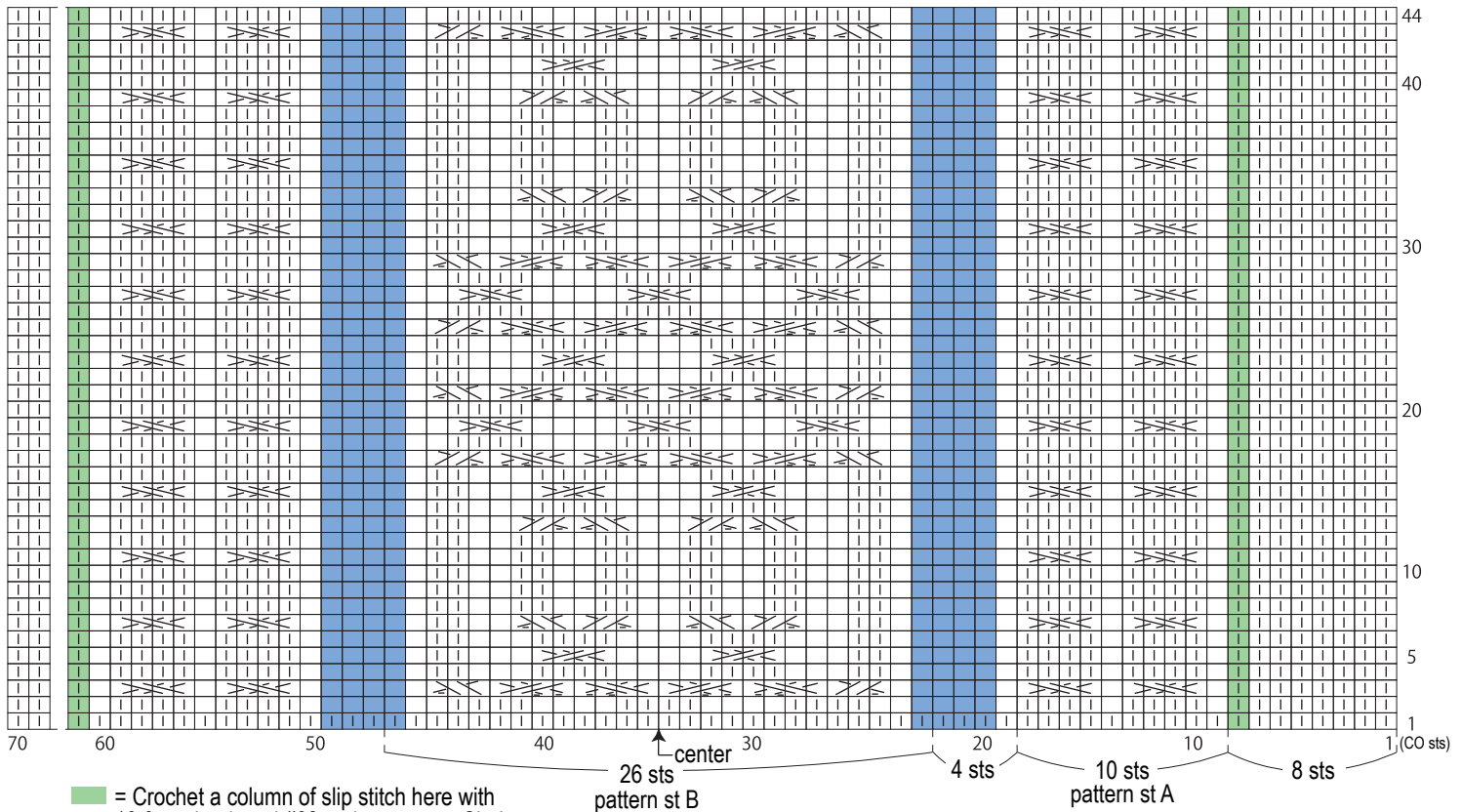
☆ = 3cm | 4 sts  
◎ = -4 sts from pattern st A  
-5 sts from pattern st B

\*Work 2 rounds of sc edging around edges.

## Side instructions

5.7mm needles

□ = □ purl



■ = Crochet a column of slip stitch here with 10.0mm hook and #03 antique green. Chain of stitches will lie alongside pattern stitch A.

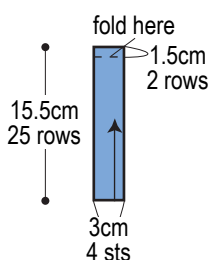
■ = fasten belt here

⊗ = C3Fp  
⊗ = C3Bp

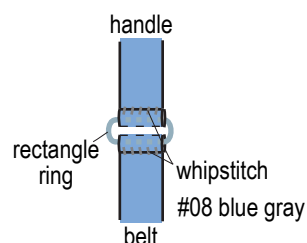
⊗ = C4Fp  
⊗ = C4Bp

## Belt: sc (make 3)

5.0mm hook, #08 blue gray

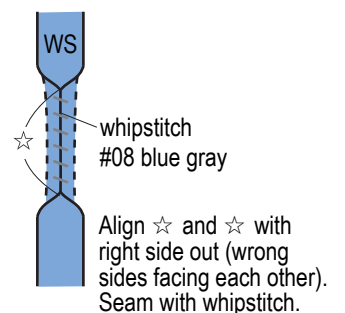
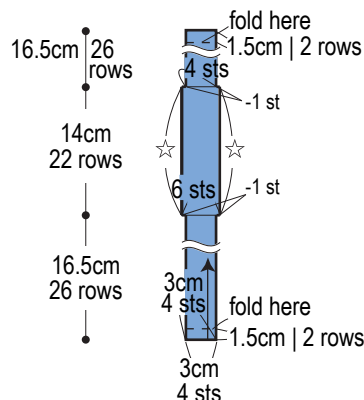


## Fasten rectangle rings



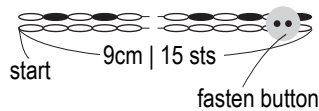
## Handles (make 2)

5.0mm hook



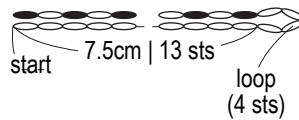
## Button loop

5.0mm hook, #03 antique green



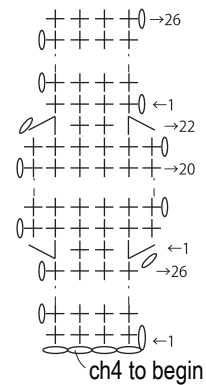
## Loop cord

5.0mm hook, #03 antique green



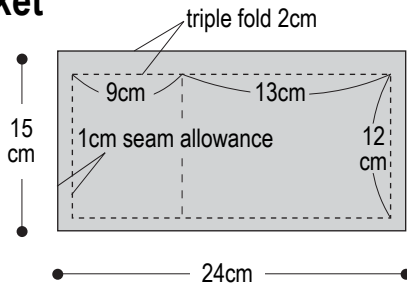
## Handle (make 2)

5.0mm hook

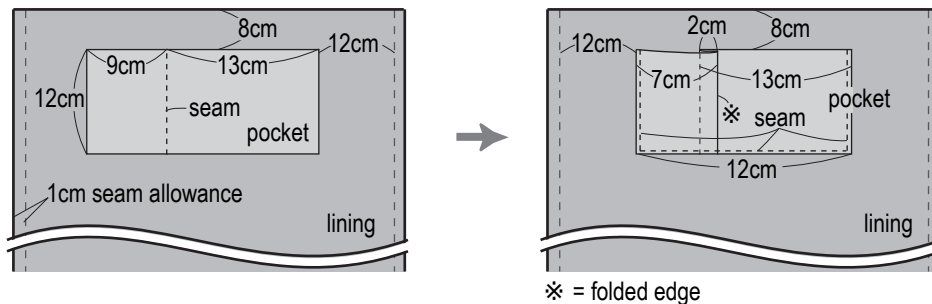


✓ = 2 sc in same stitch  
 ✓ = sc2tog

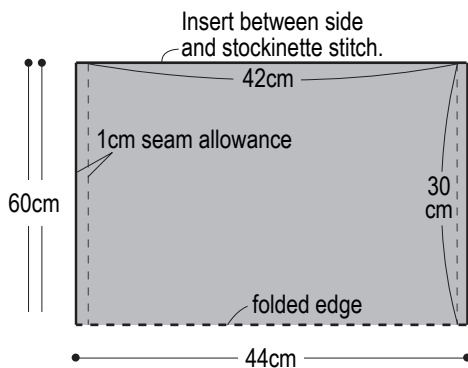
## Pocket



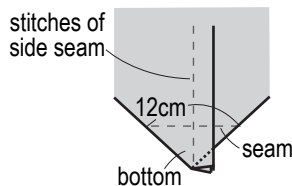
## How to attach pocket



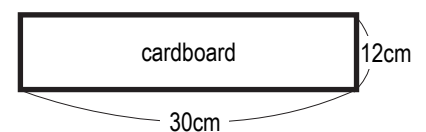
## Lining



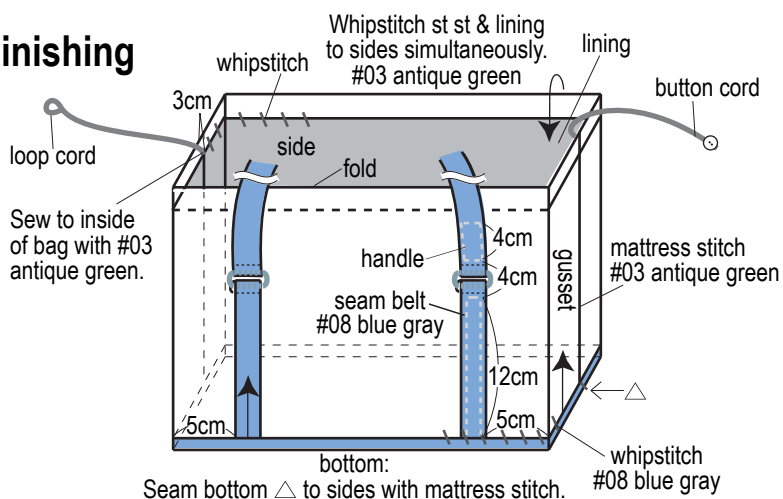
## Bottom gusset



## Cardboard for bottom



## Finishing



## Finished item

