

# Saumur Cowl



## Suggested yarn:

- Pierrot Yarns Saumur [70% merino wool, 30% alpaca; 118 yds./108m per 1.06 oz./30g skein]; color #04 mustard, 5 skeins [150g]

## Tools/Notions:

- 3.6mm (approx. US 5) knitting needles or size necessary to achieve gauge
- cable needle

## Finished measurements:

- width 21.5cm/8.46"
- neck circumference 62.5cm/24.61"

## Gauge (10cm/4" square):

- stockinette stitch: 22 sts and 33 rows
- pattern stitch: 24.5 sts and 33 rows

*Gauge may vary according to individual knitting style. Change needle size if necessary to achieve gauge. Alternatively, rework pattern with your own gauge measurements.*

## Summary

Cast on with crochet provisional cast-on method. Work in reverse stockinette stitch and pattern stitch. When finished knitting, do not bind off. Remove provisional cast-on edge, placing live stitches on needle. With wrong sides facing you, seam cast-on edge to last row using three-needle bind-off method. Seam sides with mattress stitch.

## Abbreviations:

CO = cast on

k = knit

k2tog = knit 2 sts together

L needle = left needle

OH = on hold (in this pattern, keep on needles for three-needle bind-off later)

R needle = right needle

RS = right side

sl = slip

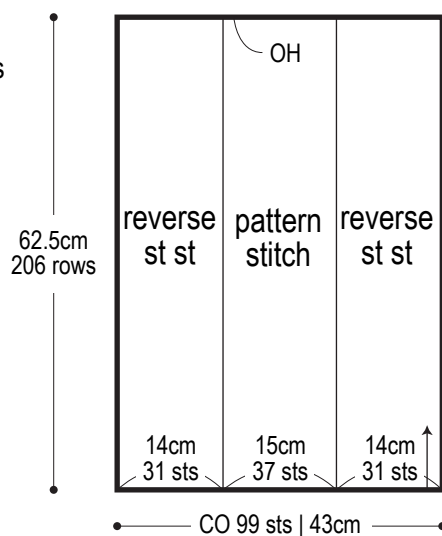
st st = stockinette stitch

tog = together

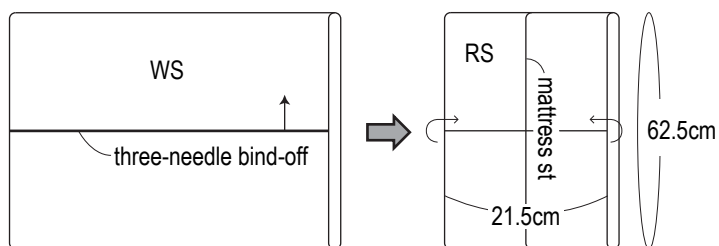
WS = wrong side

## Cowl

3.6mm needles

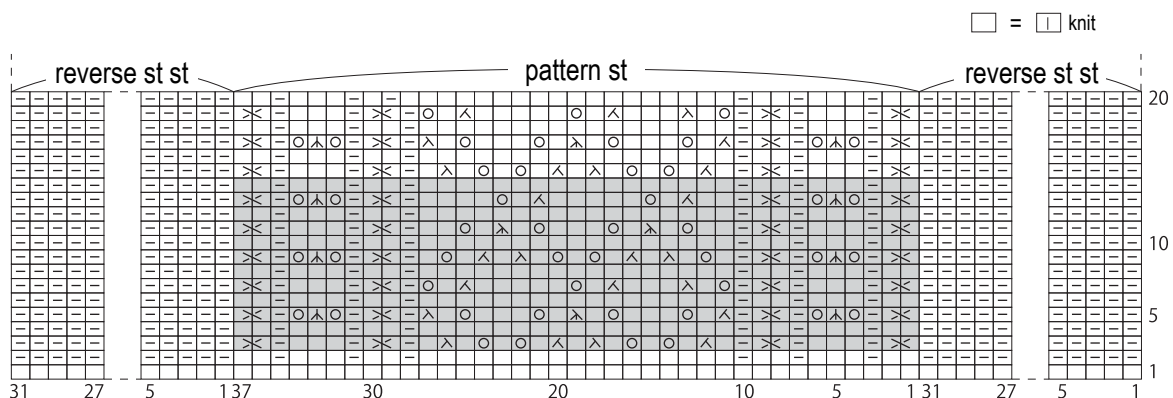


## Finishing



## Stitch chart

3.6mm needles



= 2-st right cross

Insert R needle knitwise into 2nd st on L needle from behind 1st st. K1, then k 1st st.

= center double decrease

Insert R needle knitwise into 1st 2 sts on L needle. Sl 2 sts tog, k1. Pass slipped sts over k1.

= left-leaning double decrease

Insert R needle knitwise into 1st st on L needle. Sl 1, k2tog. Pass slipped st over k2tog.

= 37 sts & 12 rows (1 repeat)