

# Princess Lily Pullover



## Suggested yarn:

- Keito-Zakka Stores Princess Lily [60% wool, 40% merino wool; 175 yds./160m per 1.41 oz./40g skein]; color #04 clever green, 8 skeins [230g]

## Tools/Notions:

- 2.3mm (approx. US B) crochet hook or size necessary to achieve gauge

## Finished measurements:

- bust 89cm/35.04"
- center back neck-to-cuff 46.5cm/18.31"
- back length 44cm/17.32"

## Gauge:

- pattern stitch: 1 pattern repeat = 3.7cm/1.46" wide and 12 rows = 10cm/4" tall

*Gauge may vary according to individual crochet style. Change hook size if necessary to achieve gauge. Alternatively, rework pattern with your own gauge measurements.*

## Summary

**Body:** Work foundation chain to begin, then work back front, and sleeves (from cuff to start of raglan edge) in pattern stitch A. Seam sides and sleeve undersides with chain seam (alternating chain st and slip st as needed to maintain pattern). Seam underarm gussets with woven seam. Join yarn to back left sleeve, and begin working body and sleeves in joined rounds (that is, rounds starting and ending with a turning post, rather than a continuous spiral with no turning posts). Work in this manner for 14 rounds, from underarm gusset until bottom of front neckline. Join yarn at front neckline to work right and left sides separately (back and forth in rows).

**Finishing:** Work pattern stitch B in the round along hem and cuffs, respectively. Work collar edging in the round.

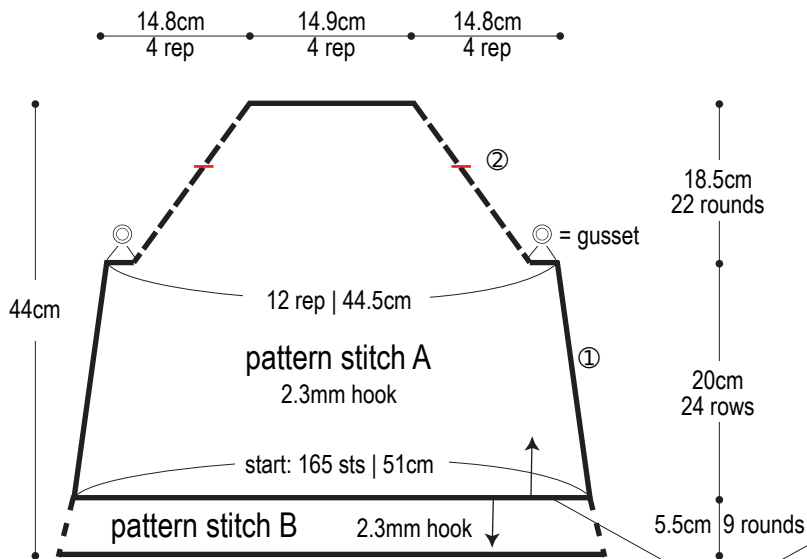
## Abbreviations:

ch = chain

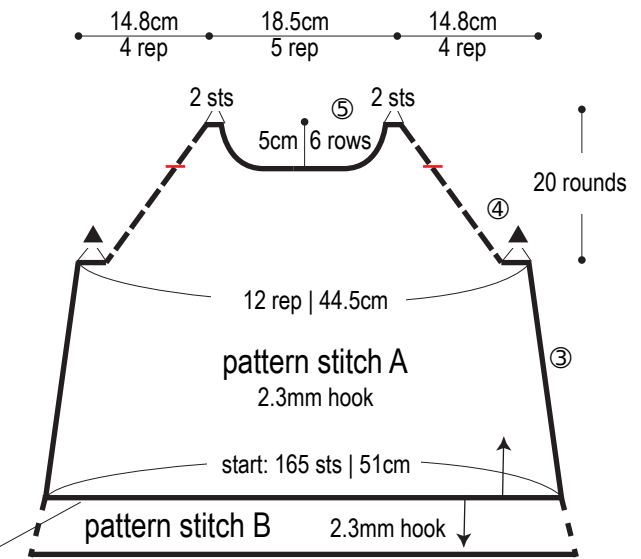
rep = pattern repeat(s)

✱**Note:** circled numbers refer to specific charts.  
For example, ① refers to chart 1 and so on.

## Back



## Front

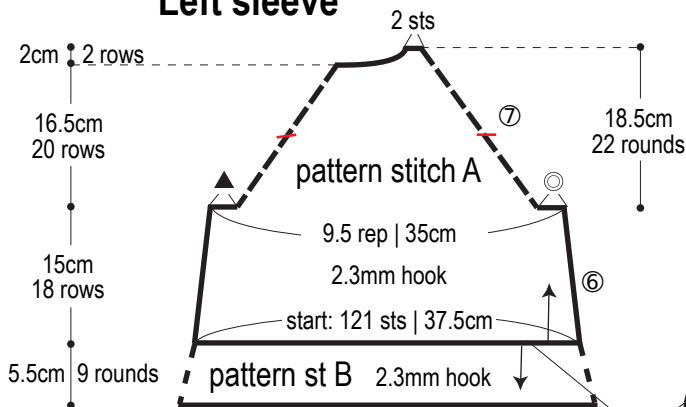


✱Work body and upper part of sleeves (14 rounds) in the round as one piece.

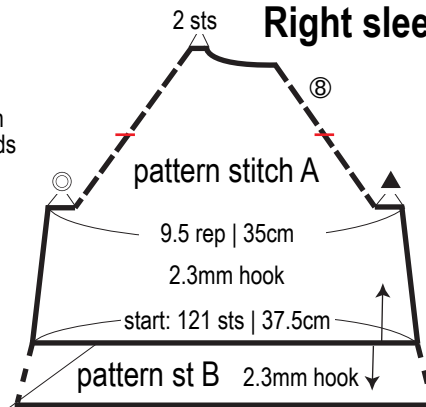
— = round 14

Edging: 330 sts (30 rep) worked into hem edge.

## Left sleeve

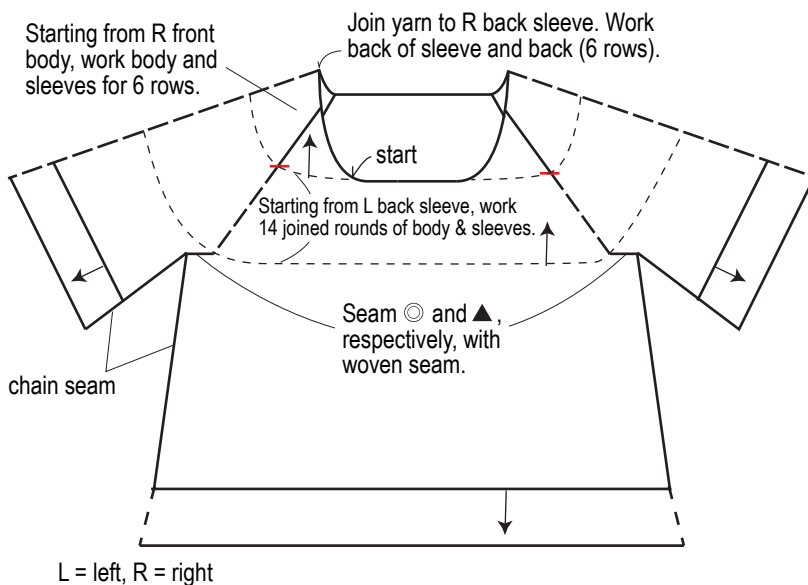


## Right sleeve



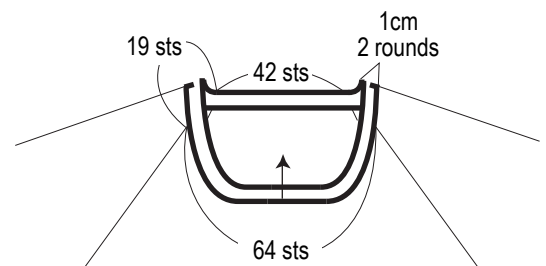
Edging: 121 sts (11 rep) worked into cuff edge.

## Finishing



## Collar edging

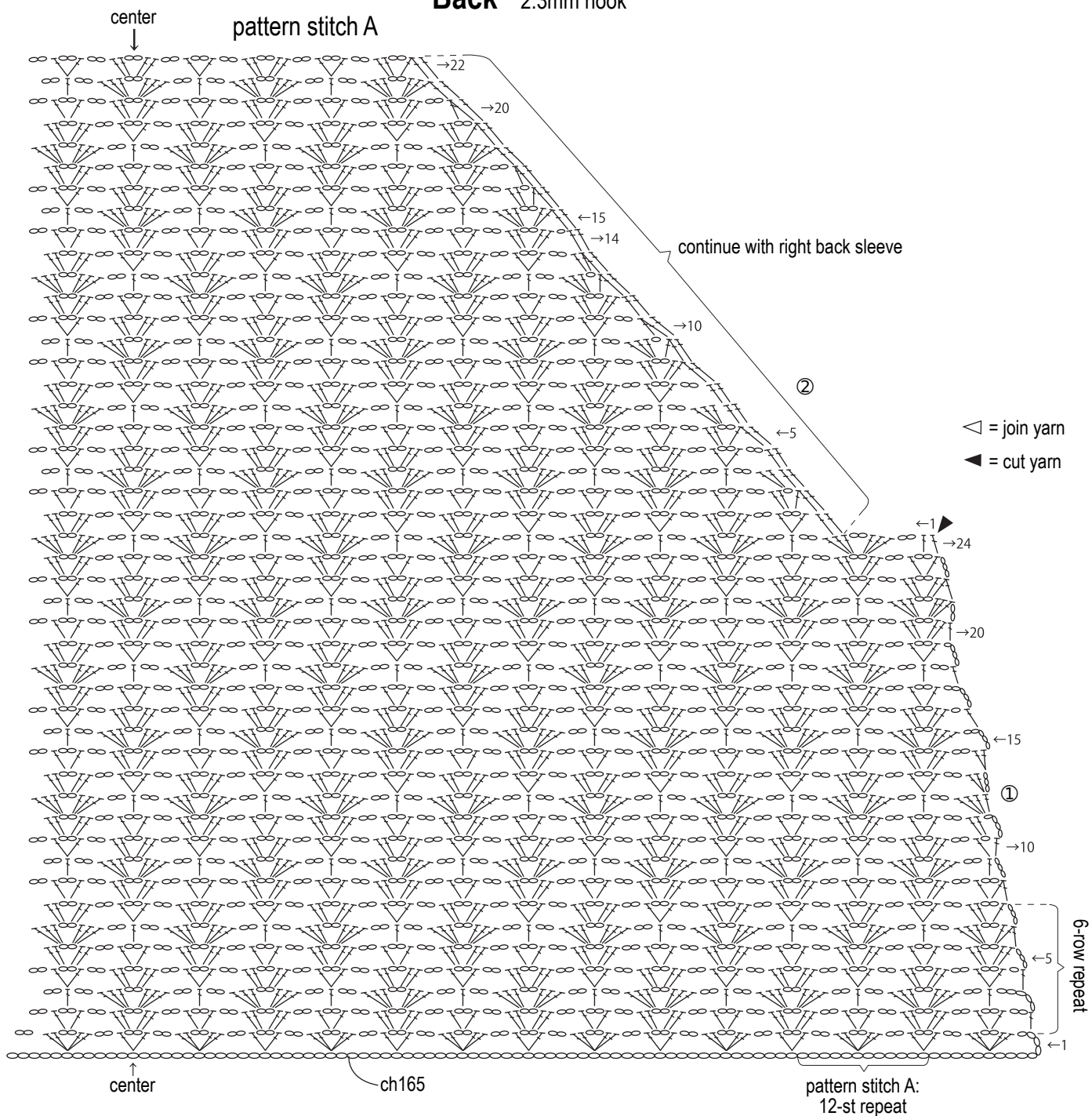
2.3mm hook



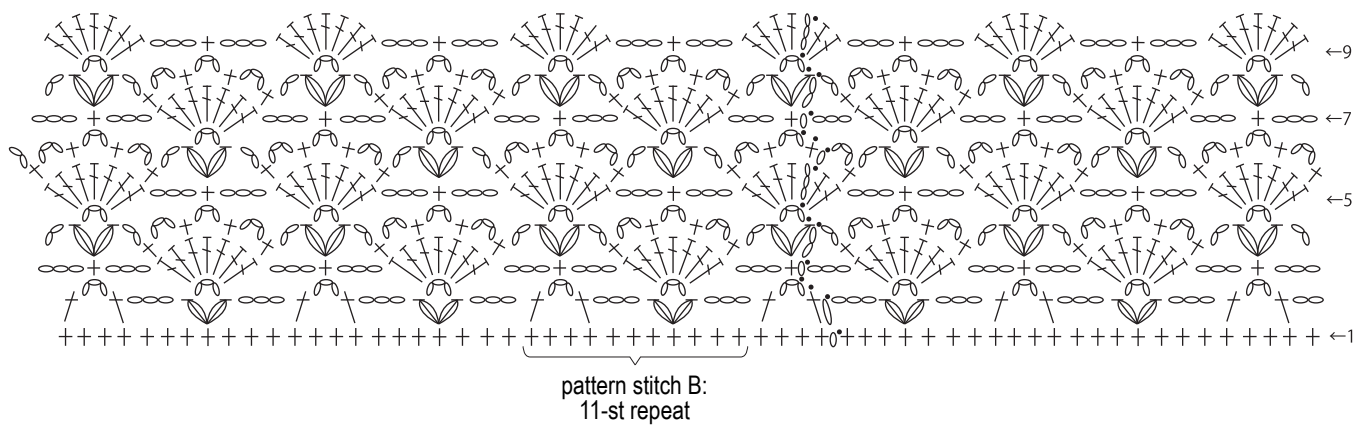
## Edging



## Back 2.3mm hook

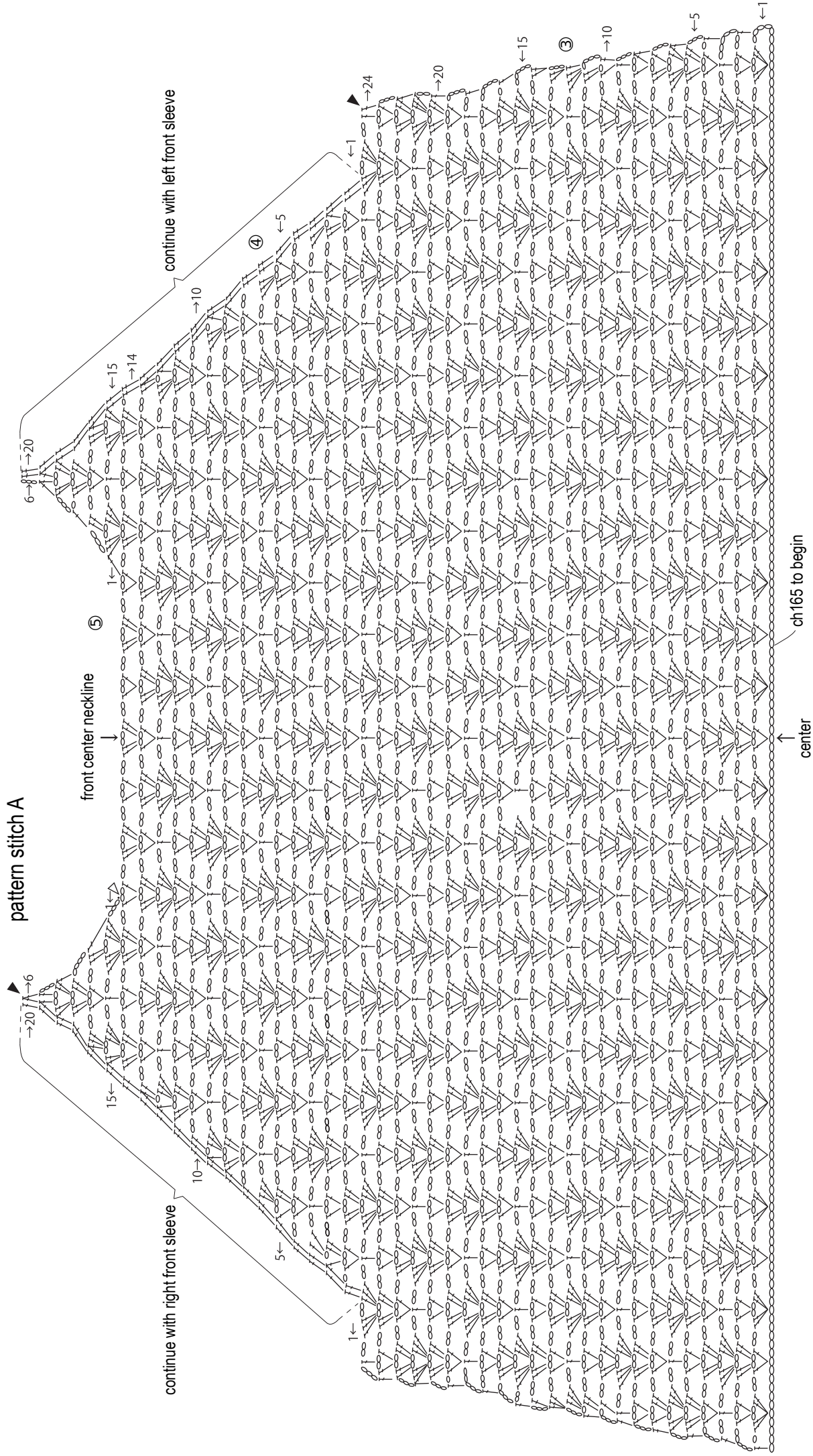


## Pattern stitch B 2.3mm hook

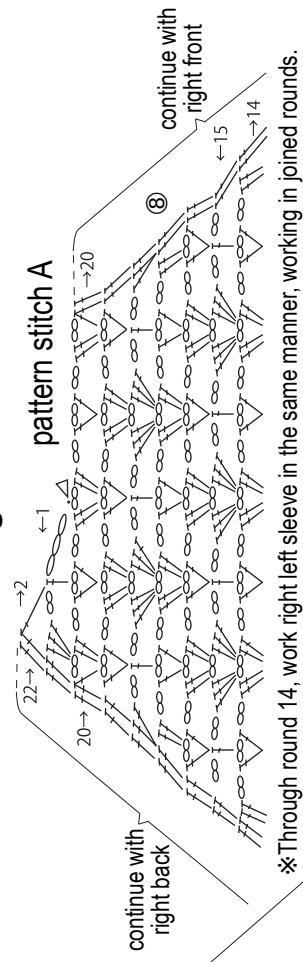


# Front 2.3mm hook

pattern stitch A



# Right sleeve 2.3mm hook



# Left sleeve 2.3mm hook

