

Ande Donut Hat



Suggested yarn:

- Keito-Zakka Stores Ande Donut [70% acrylic, 30% wool; 185 yds/169m per 1.76 oz./50g skein]; color #08 bordeaux, 2 skeins [75g]

Tools/Notions:

- 4.5mm (US 7) and 5.1mm (approx. US 8) double-pointed knitting needles or sizes necessary to achieve gauge
- 1 button (30mm/1.18")

Finished measurements:

- head circumference 55cm/21.65"
- height 27cm/10.63"

Gauge (10cm/4" square):

- pattern stitch: 15 sts and 24.5 rounds

Gauge may vary according to individual knitting style. Change needle size if necessary to achieve gauge. Alternatively, rework pattern with your own gauge measurements.

Summary

✳️**Note:** entire hat worked with 2 strands of yarn held together.

Body of hat: Cast on with long-tail cast-on method and join into the round. Work k1p1 ribbing in the round, then continue in pattern stitch. Work evenly spaced decreases to shape top of hat. After last round, cut yarn and thread tail through all remaining stitches; cinch top of hat shut.

Belt piece: Cast on with long-tail cast-on method. Work in k1p1 ribbing.

Finishing: Seam belt piece to wrong side of hat using whipstitch. Fasten button to outside of belt, sewing it through both belt and hat fabric.

Abbreviations:

BO = bind off

CO = cast on

DPN = double-pointed needles

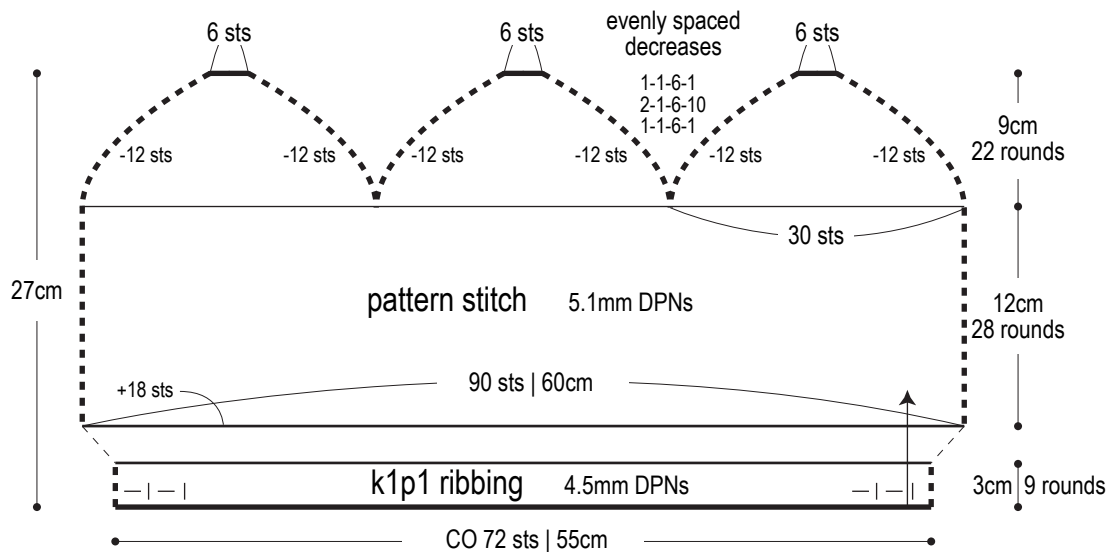
k = knit

p = purl

= rounds-stitches-places-times [for evenly spaced decreases across entire width/circumference of an item].

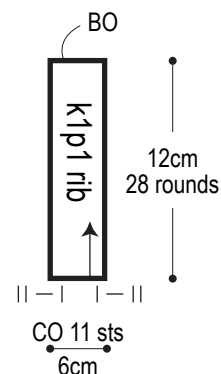
For example, 1-2-3-4 means "every 1 round, decrease 2 stitches in each of 3 places across the round; do this 4 times total."

Body of hat

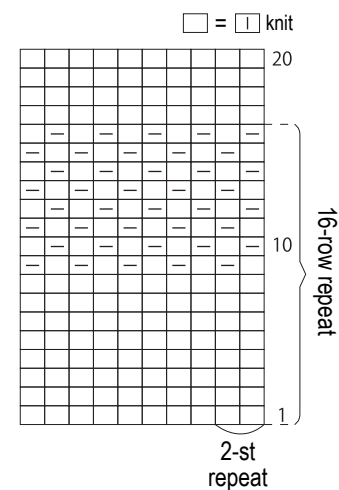


Belt piece

4.5mm needles

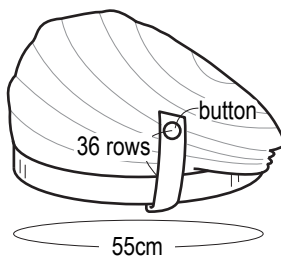
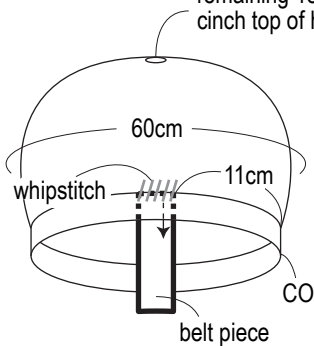


Pattern stitch



Finishing

Thread yarn tail through remaining 18 sts and cinch top of hat shut.



Top decreases

5.1mm DPNs

