

25-26-13 Shrug



Suggested yarn:

- Pierrot Yarns Alpaca Gradation [100% alpaca; 131 yds/120m per 1.41oz/40g skein]; color #5, 6 skeins [240g]

Tools/Notions:

- 3.9mm (approx. US 6) knitting needles or size necessary to achieve gauge
- 2.3mm (approx. US B) crochet hooks or size necessary to achieve gauge

Finished measurements:

- bust: one size fits most
- center back neck-to-cuff 71cm/27.95"
- back length 58cm/22.83"

Gauge (10cm/4" square):

- stockinette stitch: 19 sts and 25 rows

Gauge may vary according to individual knitting style. Change needle size if necessary to achieve gauge. Alternatively, rework pattern with your own gauge measurements.

Summary

Body of shrug: Shrug is worked from the center of the back sideways, working left and right sides separately. Cast on with crochet provisional cast-on method, then work in stockinette stitch according to schematic. Work lace at each edge as follows, in 4-row repeats (starting from second row): on RS, k1, k2tog, YO, k1, then k across rest of row. For decreases at curve of hem, work decreases to the inside of lace eyelets. At cuff end of sleeve, second-to last row according to chart, then bind off after working final row.

Finishing: Place both ends together with wrong sides facing each other, then insert hook into eyelets created by the lace pattern and seam up until end of edging B (marked on schematic). Work edging around neckline/hem and cuffs, respectively, with edging A, but insert hook into eyelets created by the lace pattern.

Abbreviations:

k = knit
k2tog = knit two stitches together
p = purl
rep = pattern repeat(s)
YO = yarn over

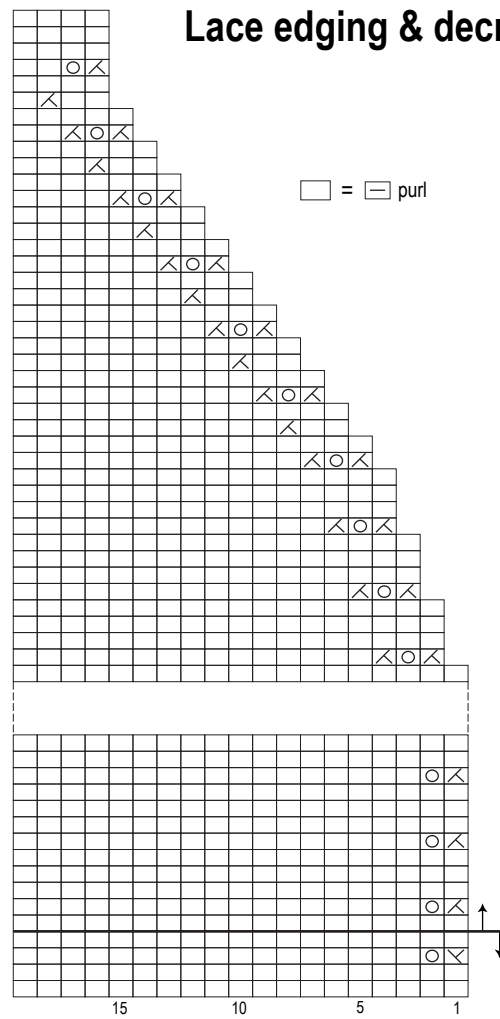
The diagram illustrates a rectangular shawl pattern with the following specifications:

- Overall Dimensions:** 70cm (176 rows) by 58cm (107 sts).
- Center Panel:** Stockinette stitch, 3.9mm needles.
- Top Edging:** Edging A (2.3mm hook), 1cm wide. The edging does not extend past a specific location.
- Right Edging:** Edging: 35 rep (repeats).
- Bottom Edging:** Edging A (2.3mm hook), 1cm wide. The edging does not extend past a specific location.
- Lacework:** Located at the corners and along the bottom edge. Dimensions include 24cm (46 sts) for the top and bottom lacework sections, and 48cm (92 sts) for the right lacework section.
- Lacework Pattern:** A detailed diagram of the lacework at the bind-off edge shows a grid of stitches. The pattern includes symbols for knit (V), purl (^), and lace (X) stitches. The last row is highlighted.
- Bottom Dimensions:** 19cm (50 rows), 13cm (34 rows), 9cm (17 rows), and 29cm (75 rows).

Diagram illustrating the construction of a shrug. The shrug is shown with lace eyelets (labeled ①) and a button placket. The diagram shows the shrug fabric held together by two layers, with the wrong sides facing each other. The lace eyelets are positioned along the edge of the shrug, and the button placket is shown with buttons and a button band.

These two lines represent the two layers of the shrug fabric held together (with wrong sides facing each other).

Lace edging & decreases



Shrug edging & finishing

2.3mm hook

