

214a-19 Mocomoco Bag



Suggested yarn:

- Pierrot Yarns Giselle [80% merino wool, 20% nylon; 83yds/76m per 1.41oz/40g skein]; color #02 navy, 5 skeins [200g]

Tools/Notions:

- 4.0mm (US G) crochet hook or size necessary to achieve gauge
- 1 pair of purse handles (outer diameter 18cm/7.09")

Finished measurements:

- Please see finishing schematic.

Gauge (10cm/4" square):

- pattern stitch: 15.5 sts and 17.5 rows

Gauge may vary according to individual crochet style. Change hook size if necessary to achieve gauge. Alternatively, rework pattern with your own gauge measurements.

Summary

✳️**Note:** Like all Japanese patterns, stitch counts given here for foundation chains do **not** include any chain sts needed for turning posts.

Body: Work foundation chain to begin, then work body of bag in pattern stitch. After working first half, work a row into bottom of foundation chain, then work second half of bag.

Finishing: Work edging (sc2tog tbl) around mouth of bag. Fold sc section to inside; seam in place from right side using slip stitch seam. At the same time, secure handles in place by encasing them in fabric. With wrong sides facing each other, seam sides of bag together with whipstitch.

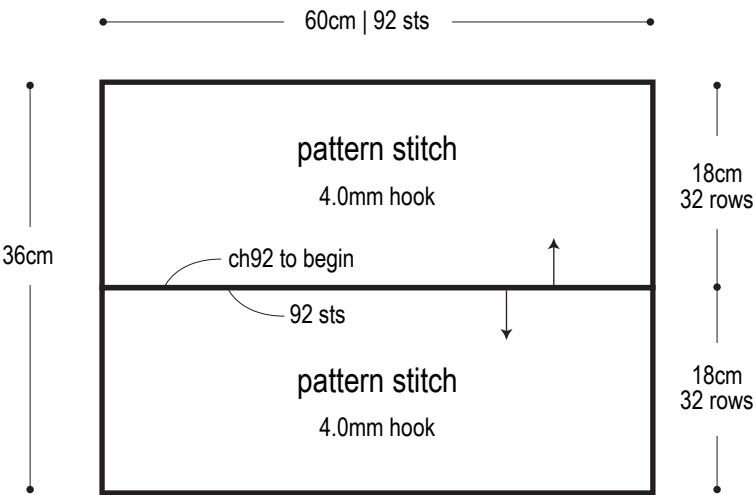
Abbreviations:

ch = chain

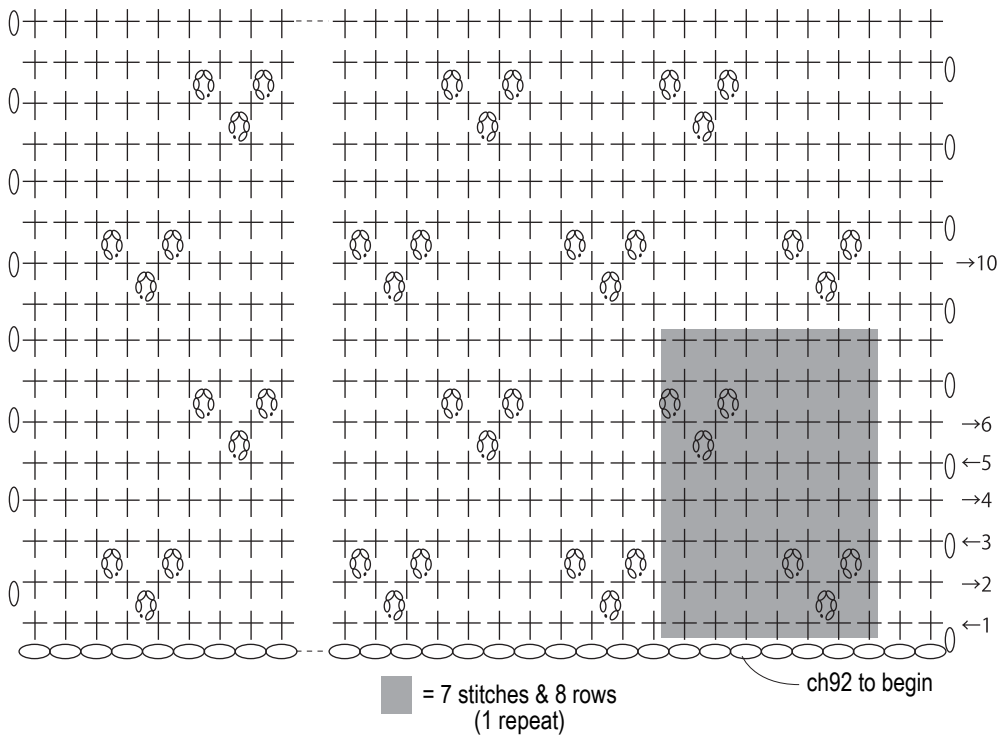
sc = single crochet (US)

sc2tog tbl = single crochet (US) 2 stitches together through back loop only

Body of bag



Pattern stitch 4.0mm hook



Finishing: mouth of bag

sc, 4.0mm hook

