

# 96-97-10 Turtleneck Pullover



## Suggested yarn:

- *original suggestion (discontinued)*: Pierrot Yarns Super Kid Mohair [75% kid mohair, 25% nylon; 306 yds/280m per 0.88 oz./25g skein]; color #5812, 11 skeins [260g]
- *suggested substitute*: Pierrot Yarns Cutie Mohair [28% kid mohair, 28% acrylic, 14% superwash wool, 30% nylon; 339 yds/310m per 0.88 oz./25g skein]; color #37 purple, 11 skeins [260g]

## Tools/Notions:

- 3.3mm (approx. US 3) and 3.9mm (approx. US 6) knitting needles or sizes necessary to achieve gauge
- 3.3mm (approx. US 3) circular knitting needle or size necessary to achieve gauge

## Finished measurements:

- bust 104cm/40.94"
- cross back width 43cm/16.93"
- back length 64cm/25.20"
- sleeve length 50cm/19.69"

## Gauge (10cm/4" square):

- pattern stitch A: 21 sts and 26 rows
- pattern stitch B: 22 sts and 26 rows

*Gauge may vary according to individual knitting style. Change needle size if necessary to achieve gauge. Alternatively, rework pattern with your own gauge measurements.*

## Summary

✳️**Note:** entire garment worked with 2 strands of yarn held together.

**Back:** Cast on with crochet provisional cast-on method. Work in pattern stitch A. When decreasing 2 or more stitches, bind them off. When decreasing 1 stitch, work k2tog/ssk at edge.

**Front:** Cast on as for back. After working 65 rows in pattern stitches A and C, divide center panel (worked in pattern stitch C) into three parts: 17 sts, 1 st, and 17 sts. At insides of V, work YO and twisted knit stitch. At outer edges of V, decrease by working p2tog. Work inside of V-shaped section in pattern stitch B.

**Sleeve:** Cast on as for body. Work in pattern stitch A.

**Finishing:** With right sides facing each other, seam shoulders with three-needle bind-off method. Pick up stitches from front and back neckline for collar; work in pattern stitch B' in the round. Work final round in k1p1 ribbing, then bind off. Seam sides and sleeve undersides with mattress stitch. With right sides facing each other, seam sleeves to body with crochet slip stitch seam.

## Abbreviations:

BO = bind off      CO = cast on      dec = decrease(s)      k2tog = knit 2 sts together      inc = increase(s)      p2tog = purl 2 sts together      PU = pick up      R = row(s)  
RE = row(s) even      ssk = slip, slip, knit      ### = rows-stitches-times

## Back

20cm 41 sts | 11.5cm 25 sts

2cm 5R 37 sts OH 3 RE 1-1-2

42 RE 4-1-1 2-1-4 1-1-2 BO 3

64cm pattern st A 3.9mm needles

52cm | 111 sts

edging: 3.3mm needles

52cm | 106 sts

## Front

11.5cm 29 sts | 20cm 45 sts | 11.5cm 29 sts

4 sts 17 sts 8 sts

6cm 16 rows 25 sts OH pattern st B

BO 3 same as back -10 sts

inc 2 RE 4-1-25 1-1-1 +26 sts

dec 2 RE 4-1-25 1-1-1

17 sts 17 sts 1 st

25cm 65 rows pattern st A 3.9mm needles

52cm | 123 sts

35 sts 17 sts

3.3mm needles

52cm | 106 sts

☆ = 20.5cm | 44 sts

## Sleeve

7cm 18 rows

43cm | 91 sts

39cm 100 rows

pattern st A 3.9mm needles

+20 sts

24cm 51 sts

5cm 14 rows

edging: 3.3mm needles

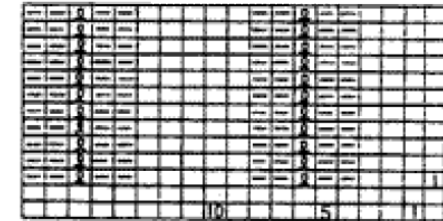
20cm 42 sts

twisted k1p1 ribbing

9 sts

2 RE 2-4-1 2-3-1 2-2-5 2-3-1 BO 4

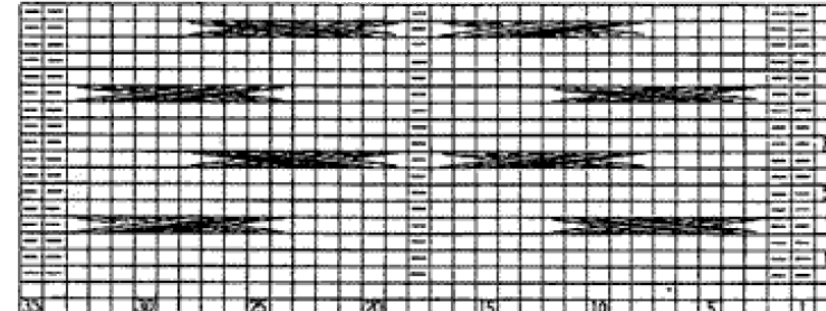
## Pattern stitch A



left front right front sleeve back start

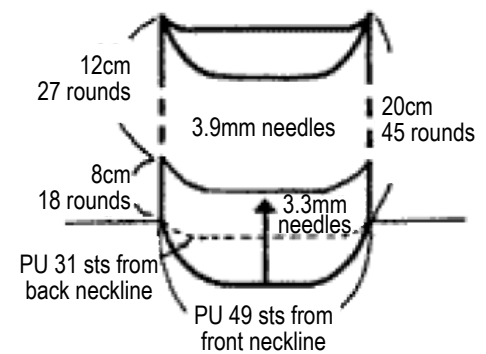
□ = knit

## Pattern stitch C



center

## Collar: pattern stitch B'

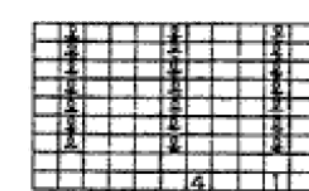


back neckline front neckline center start

12cm 27 rounds 3.9mm needles 20cm 45 rounds 8cm 18 rounds 3.3mm needles

PU 31 sts from back neckline PU 49 sts from front neckline

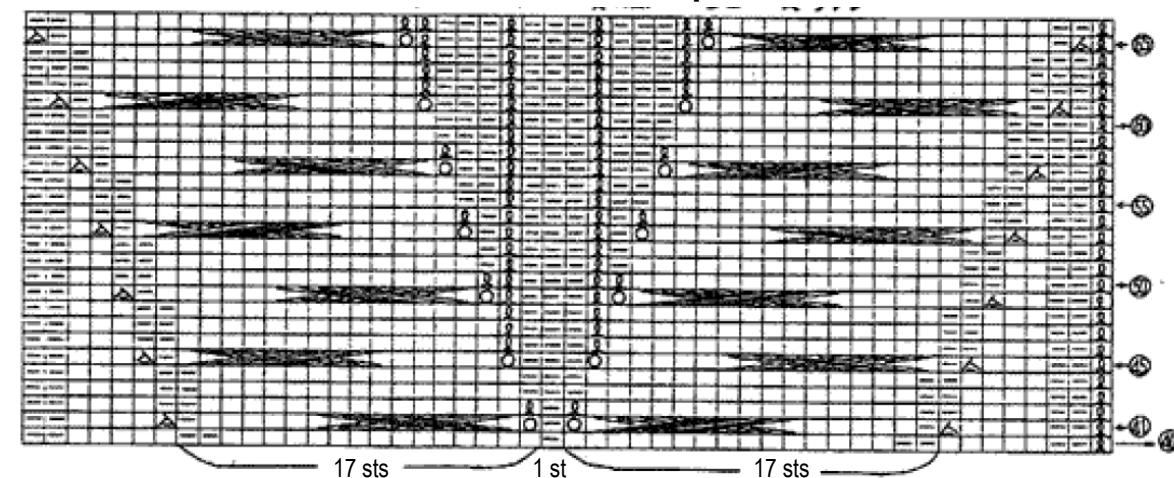
## Pattern stitch B'



center

□ = knit

## Transition from front center Pattern st A panel to Pattern st B



17 sts 1 st 17 sts