

214w-366ami2 Year of the Sheep Amigurumi



Suggested yarn:

- Pierrot Yarns Soft Merino [100% merino; 104yds/95m per 1.41oz/40g skein]; color #5 pink, 1 skein [10g]
- Pierrot Yarns Junmo Namibuto2/Pure Wool [100% wool; 79yds/72m per 1.41oz/40g skein];
 - color #2 ivory, 1 skein [10g]
 - color #27 light apricot, 1 skein [small amount]
- Pierrot Yarns Rabbits [43% mohair, 41% acrylic, 16% nylon; 63yds/58m per 1.41oz/40g skein]; color #02 felice, 2 skeins [70g]

Tools/Notions:

- 3.5mm (US E) and 5.0mm (US H) crochet hooks or sizes necessary to achieve gauge
- 3.9mm (approx. US 6) knitting needles or size necessary to achieve gauge
- 2 safety eyes (8mm/0.31")
- brown embroidery thread
- polyfiber stuffing

Finished measurements:

- body length 23cm/9.06"
- weight 145g/5 oz.
- Please refer to schematics for more detailed measurements.

Gauge (10cm/4" square):

- No gauge information is provided in the original pattern. Use hook sizes necessary to achieve fabric sufficiently dense that stuffing will not show through.

Gauge may vary according to individual crochet style. Change hook size if necessary to achieve gauge. Alternatively, rework pattern with your own gauge measurements.

Summary

Torso: Work foundation chain to begin, then crochet according to chart.

Face | Head | Legs | Ears | Horns: Work magic ring to begin, then crochet each piece according to chart.

Bandana: Cast on with long-tail cast-on method, then knit according to chart. Work decreases at both edges.

Finishing: Insert stuffing into each part except ears, then sew together as shown in finishing schematic. Fasten safety eyes to face. Embroider nose and mouth on face.

Abbreviations:

ch = chain stitch

k = knit stitch

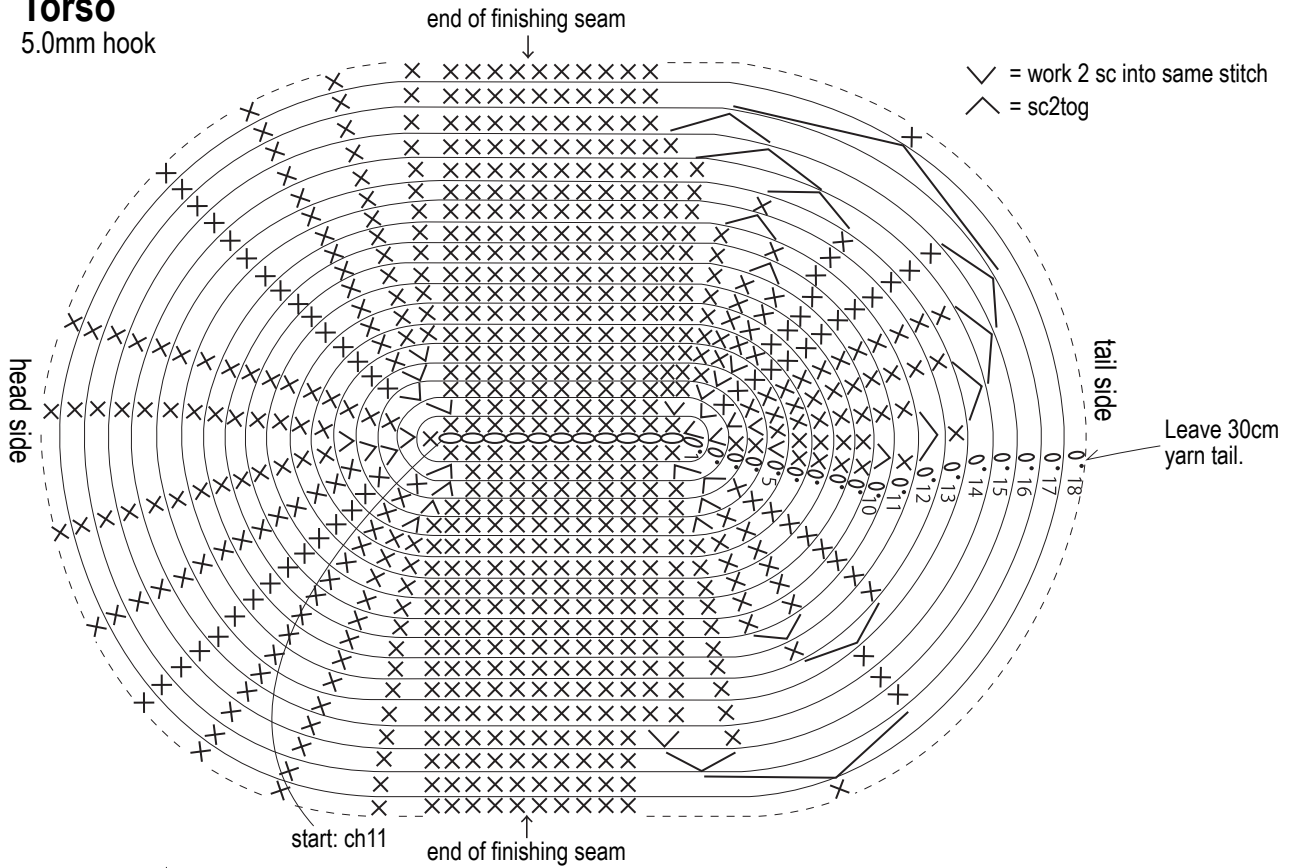
m = magic ring

sc = single crochet (US) stitch

sc2tog = work 2 sc stitches together

Torso

5.0mm hook

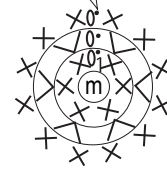


round no.	stitch count
18	34 sts (work even)
17	34 sts (-2)
16	36 sts (-3)
15	39 sts (-3)
14	42 sts (-2)
13	44 sts (-1)
12	45 sts (-2)
11	47 sts (-1)
10	48 sts (-2)
6-9	50 sts (work even)
5	50 sts (+6)
4	44 sts (+6)
3	38 sts (+6)
2	32 sts (+7)
1	25 sts

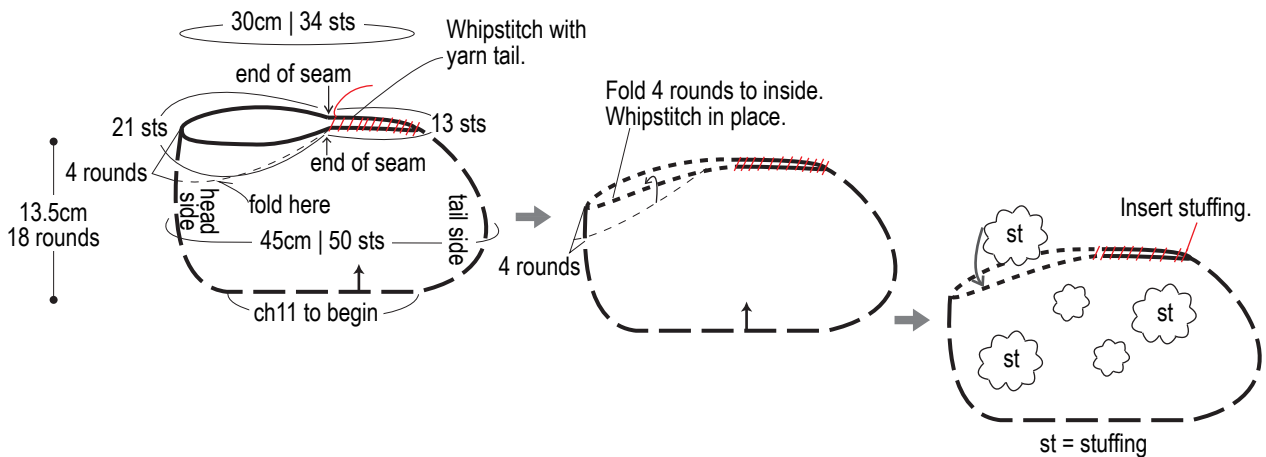
Tail

5.0mm hook

Leave 30cm yarn tail.

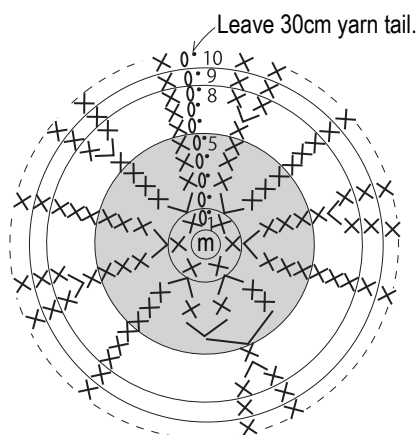


Torso finishing



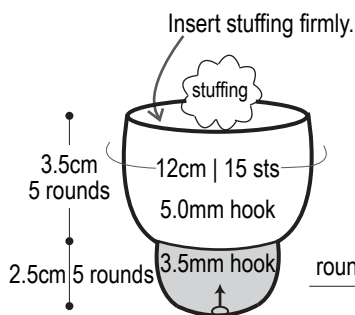
Leg (make 4)

3.5 & 5.0mm hooks



● = Junmo Namibuto 2, color #2

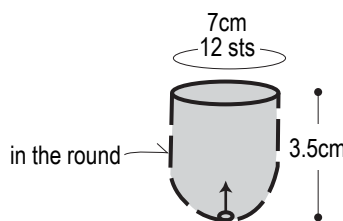
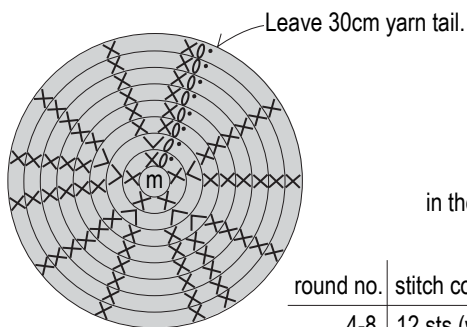
Elsewhere, use Rabbits.



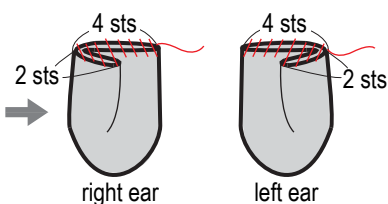
round no.	stitch count
8-10	15 sts (work even)
7	15 sts (+5)
6	10 sts (work even)
5	10 sts (-1)
4	11 sts (-1)
3	12 sts (work even)
2	12 sts (+6)
1	6 sts (Work into magic ring.)

Ear (make 2)

3.5mm hook, Junmo Namibuto 2 color #2



※Do not insert stuffing into ears.

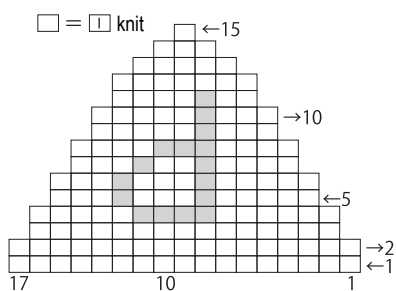


※Fold 2 sts, then seam ends together with whipstitch. (Right and left ears folded in mirror image to each other.)

round no.	stitch count
4-8	12 sts (work even)
3	12 sts (+2)
2	10 sts (+5)
1	5 sts (Work into magic ring.)

Bandana

3.9mm needles, Soft Merino color #5

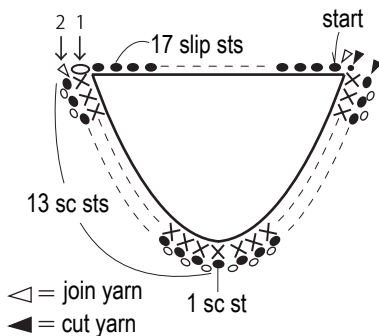


■ = duplicate stitch (Junmo Namibuto 2 color #2)

※Cast on with long-tail cast-on method.
Decrease at right and left edges.

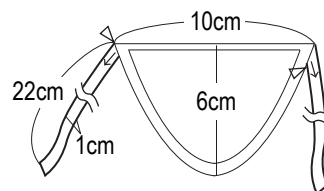
Bandana edging

3.5mm hook, Soft Merino color #5



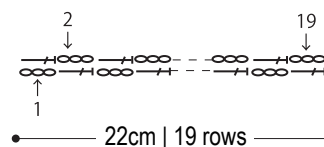
Bandana finishing

Crochet straps onto bandana.



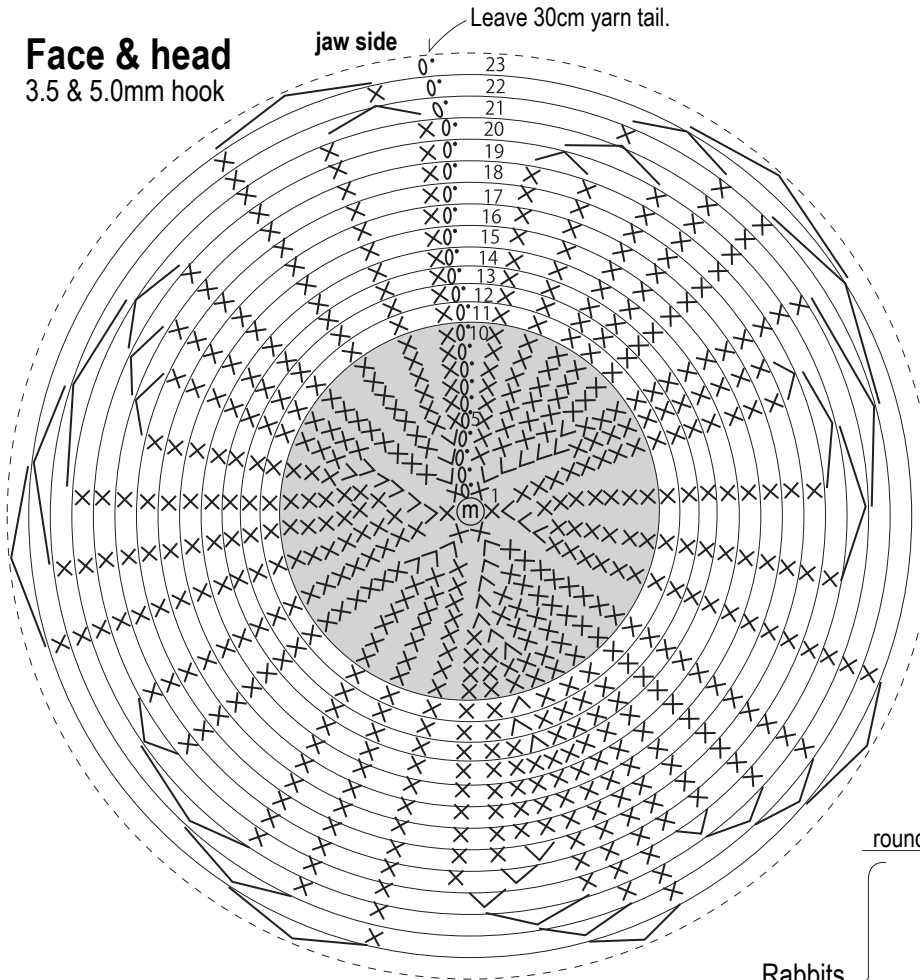
Bandana straps

3.5mm hook, Soft Merino color #5



Face & head

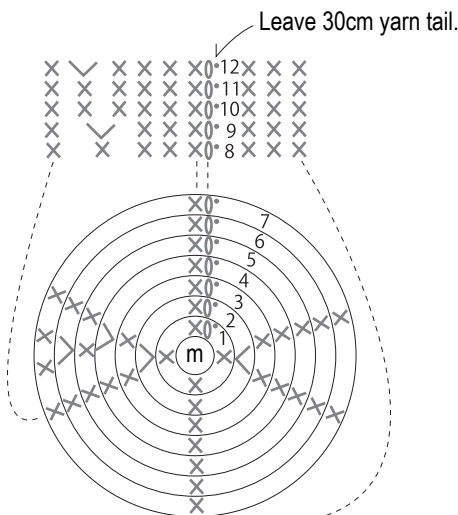
3.5 & 5.0mm hook



	round no.	stitch count
Rabbits 5.0mm hook	23	6 sts (-6)
	22	12 sts (-6)
	21	18 sts (-6)
	20	24 sts (-6)
	19	30 sts (-4)
	18	34 sts (-3)
	14-17	37 sts (work even)
	13	37 sts (+1)
	12	36 sts (+1)
	11	35 sts (+1)
Junmo Namibuto 2 color #2 3.5mm hook	9-10	34 sts (work even)
	8	34 sts (+1)
	7	33 sts (+3)
	6	30 sts (+3)
	5	27 sts (+3)
	4	24 sts (+6)
	3	18 sts (+6)
	2	12 sts (+6)
	1	6 sts (Work into magic ring.)

Horn (make 2)

3.5mm hook, Junmo Namibuto 2 color 27

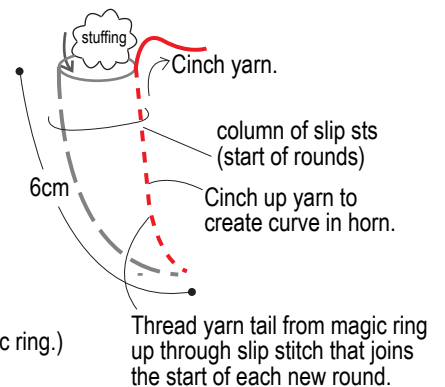


※Leave 20cm tail when starting.

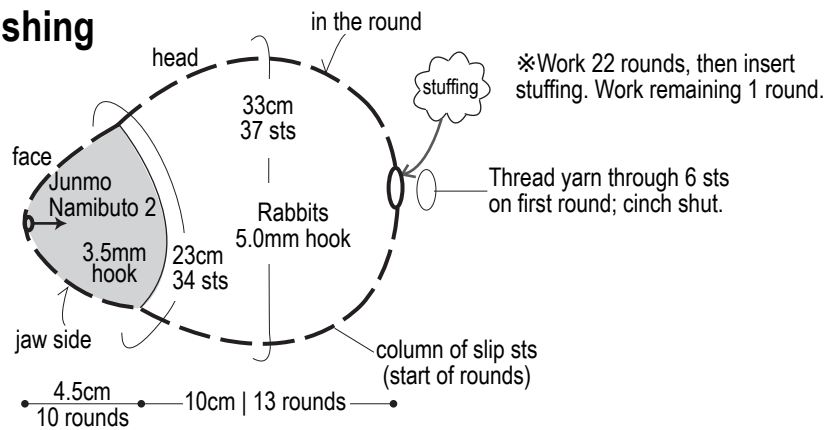
Horn finishing

Insert stuffing.

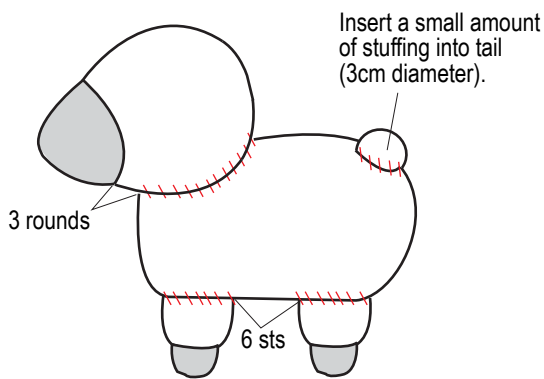
round no.	stitch count
12	10 sts (+1)
11	9 sts
10	9 sts
9	9 sts (+1)
8	8 sts
7	8 sts
6	8 sts (+1)
5	7 sts (work even)
4	7 sts (+1)
3	6 sts (work even)
2	6 sts (+2)
1	4 sts (Work into magic ring.)



Face & head finishing

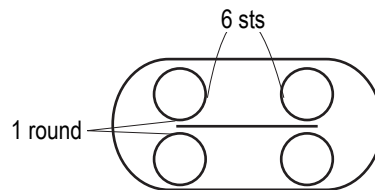


Sheep finishing

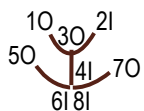


Leg placement

As seen from below.



Mouth: embroider



Numbers show order of steps.

I = insert needle from front to back
O = take needle out from back to front

