

214w-19 Aran Cap



Suggested yarn:

- Pierrot Yarns Foire DK [100% wool; 90 yds/82m per 1.41 oz./40g skein]; color #22 light gray, 3 skeins [95g]

Tools/Notions:

- 3.3mm (approx. US 3) and 3.9mm (approx. US 6) double-pointed knitting needles or sizes necessary to achieve gauge
- cable needle

Finished measurements:

- head circumference 48cm/18.90"
- length (when cuff is folded up) 23cm/9.06"

Gauge (10cm/4" square):

- pattern stitch: 29 sts and 28 rounds

Gauge may vary according to individual knitting style. Change needle size if necessary to achieve gauge. Alternatively, rework pattern with your own gauge measurements.

Summary

Top & sides: Cast on with crochet provisional cast-on method. Work pattern stitch in the round for 44 rounds even (no shaping). Begin working evenly spaced decreases on the next round as indicated. When finished, thread yarn through all remaining stitches and cinch top of hat shut.

Brim: Remove provisional cast-on edge, picking up the live stitches as you go. With wrong side of hat facing, work brim in the round in pattern stitch and k1p1 ribbing. Bind off in pattern.

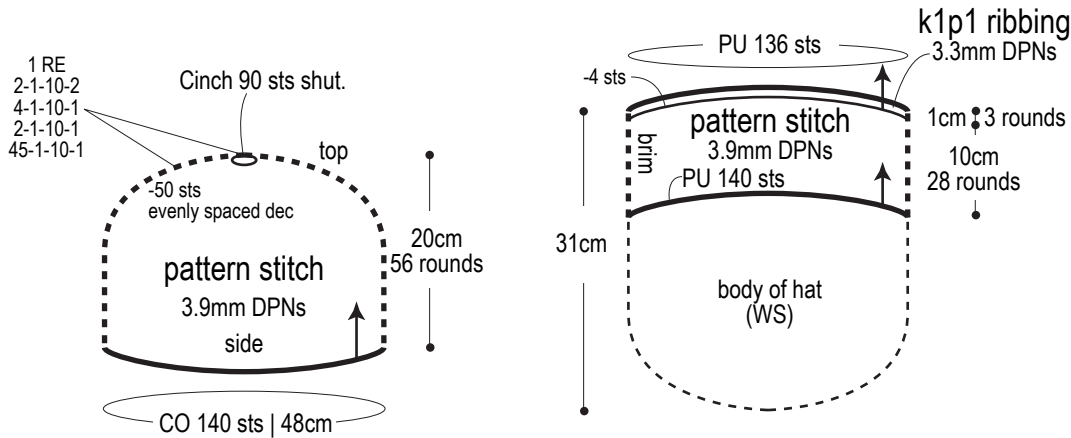
Finishing: With right side of hat facing out, fold up brim at line shown on finishing schematic.

Abbreviations:

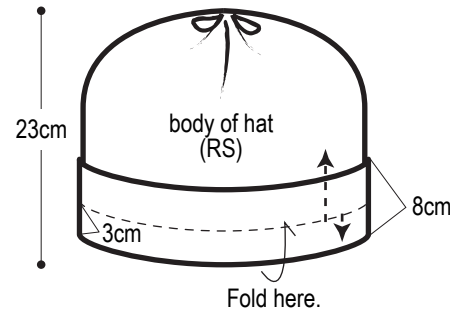
CO = cast on k = knit p = purl PU = pick up RE = round(s) even RS = right side WS = wrong side

= rounds-stitches-places-times [for evenly spaced decreases across entire width of an item]. For example, 1-2-3-4 means "every 1 row, decrease 2 stitches in each of 3 places across the round; do this 4 times total."

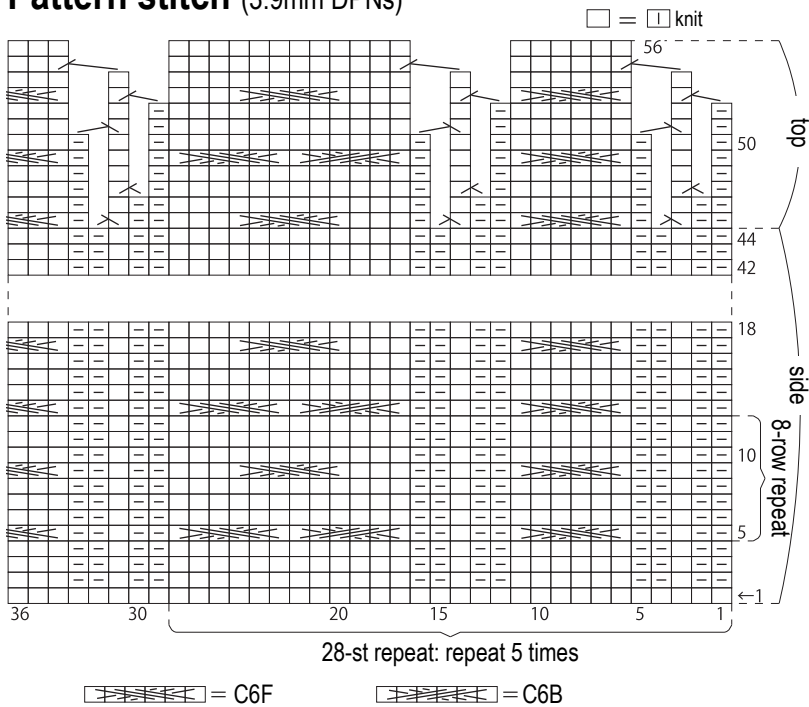
Hat schematics



Finishing



Pattern stitch (3.9mm DPNs)



Brim

