

816rs Dejavé Room Shoes



Suggested yarn:

- Arianna Filati Dejavé [72% acrylic, 28% nylon; 55 yds/50m per 3.53 oz./100g skein];
 - ladies' size: color #01 berry, 2 skeins [110g]
 - men's size: color #03 monochrome, 2 skeins [140g]

Tools/Notions:

- 8.0mm (US 11) knitting needles or size necessary to achieve gauge

Finished measurements:

- Please refer to schematics.

Gauge (10cm/4" square):

- k1p1 ribbing: 8.5 sts and 10.5 rows

Gauge may vary according to individual knitting style. Change needle size if necessary to achieve gauge. Alternatively, rework pattern with your own gauge measurements.

Summary

❖**Note:** Slipper measurements reflect negative ease, as fabric will stretch.

Body of slipper: Cast on with long-tail cast-on method. Work in k1p1 ribbing starting from heel section. Bind off.

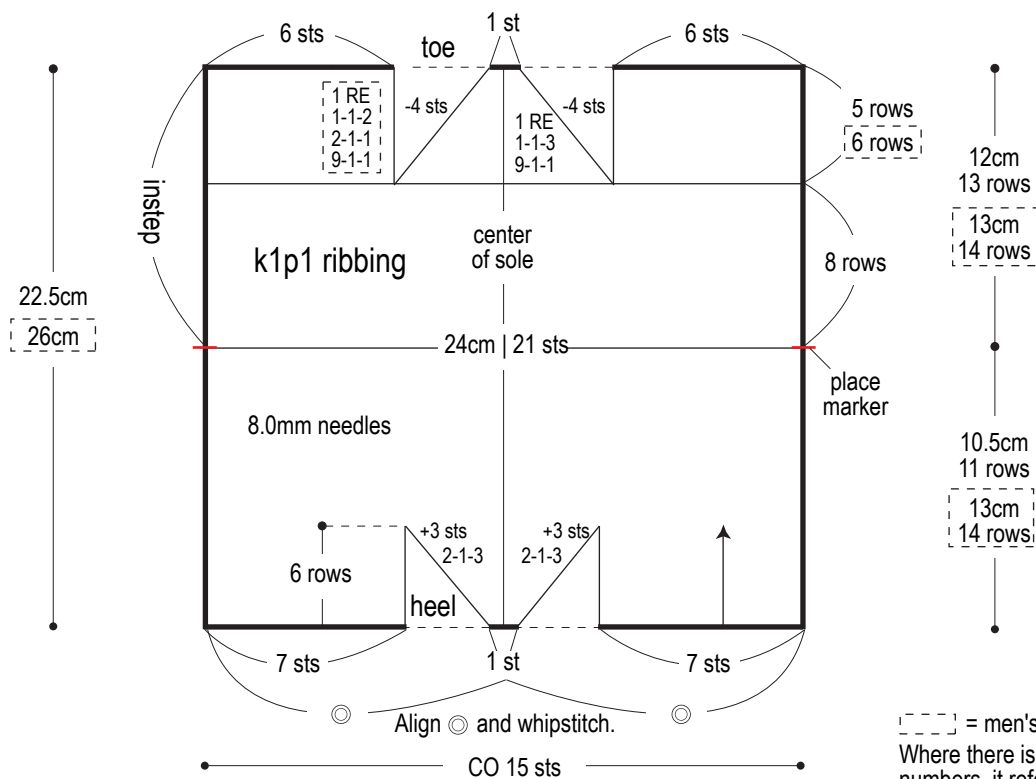
Finishing: With wrong sides facing each other, seam heel section with whipstitch. Seam instep with right side facing using mattress stitch. With slipper inside-out, seam toe with whipstitch.

Abbreviations:

BO = bind off
CO = cast on
k = knit
p = purl
RE = row(s) even
= rows-stitches-times

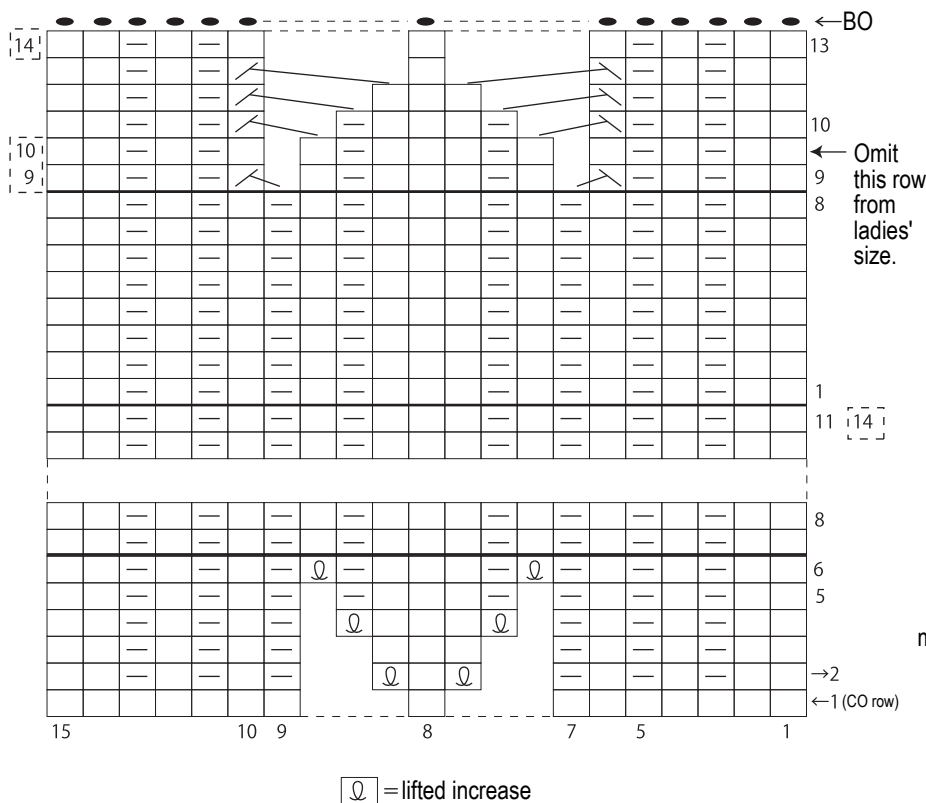
Slipper

make 2 per pair



[] = men's size
Where there is only one set of numbers, it refers to both sizes.

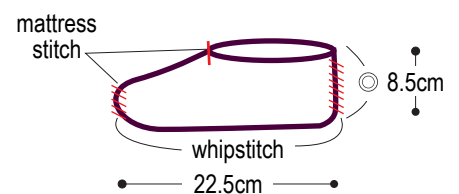
Slipper chart (8.0mm needles)



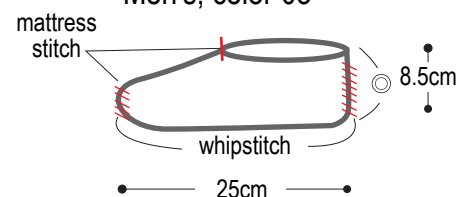
Finishing

- Whipstitch upper heel (marked with ○) with wrong sides facing each other.
- Mattress stitch from toe to instep marker with right sides facing each other.
- Turn slipper inside out & whipstitch toe.

Ladies', color 01



Men's, color 03



*Measurements refer to finished sizes.