

214w-07 French Mohair Sweater



Suggested yarn:

- Pierrot Yarns Silk Rosa [75% mohair, 25% silk; 213yds/195m per 0.88oz/25g skein]; color #06 wine red, 8 skeins [185g]

Tools/Notions:

- 3.9mm (approx. US 6) and 4.5mm (US 7) knitting needles or sizes necessary to achieve gauge
- 3.9mm (approx. US 6) double-pointed knitting needles or size necessary to achieve gauge
- 5 buttons (8mm/0.31")

Finished measurements:

- bust 108cm/42.52"
- center back neck-to-cuff 65cm/25.59"
- back length 56.5cm/22.24"

Gauge (10cm/4" square):

- pattern stitch: 19 sts and 24 rows
- k1p1 ribbing: 20 sts and 24 rows

Gauge may vary according to individual knitting style. Change needle size if necessary to achieve gauge. Alternatively, rework pattern with your own gauge measurements.

Summary

✳️**Note:** Entire garment worked with 2 strands of yarn held together.

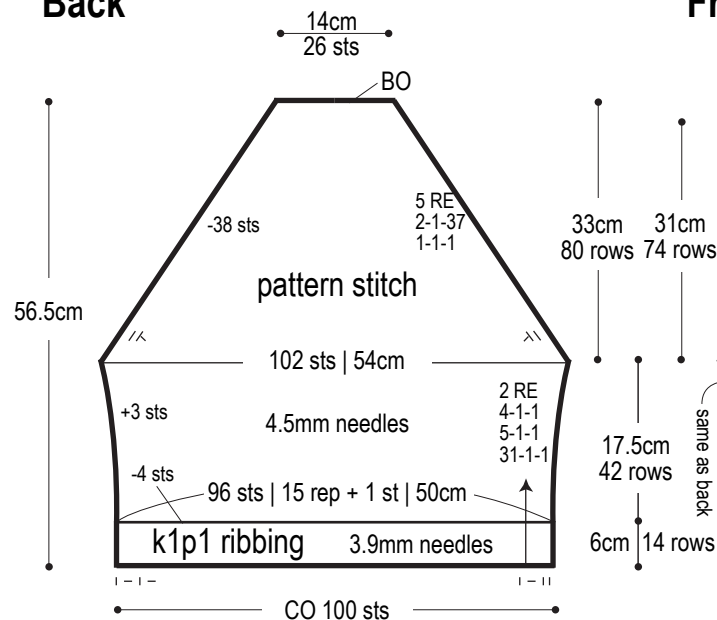
Body & sleeve: Cast on with long-tail cast-on method. Work in k1p1 ribbing, then continue in pattern stitch. Shape raglan edges by working fully fashioned decreases (2 stitches in from the edge). Reverse shaping of right sleeve for left sleeve.

Finishing: Seam raglan edges with mattress stitch. Seam from hem to cuff with one continuous mattress stitch seam on each side, but in the curved section of the side and sleeve, seam with loosely worked half back stitch. Pick up stitches around neckline; work collar edging in k1p1 ribbing in the round. Bind off in pattern. Cast on for shoulder strip with long-tail cast-on method. Work this long, rectangular piece in k1p1 ribbing, then seam loosely to left shoulder with whipstitch.

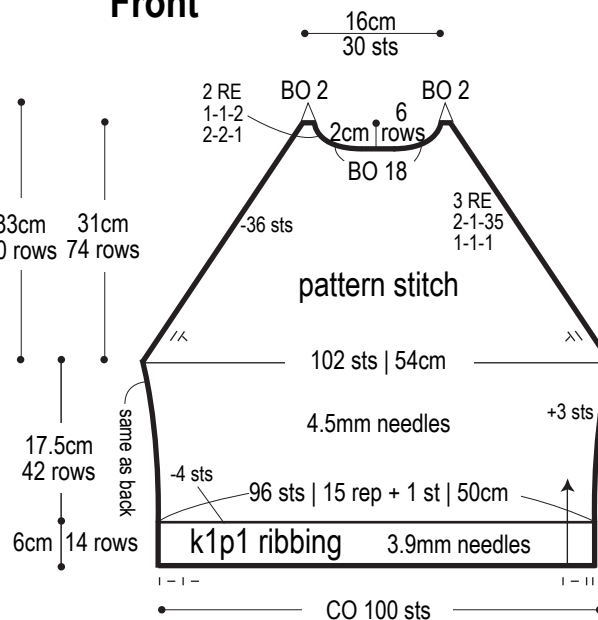
Abbreviations:

BO = bind off CO = cast on PU = pick up RE = row(s) even rep = pattern repeat(s) ### = rows-stitches-times

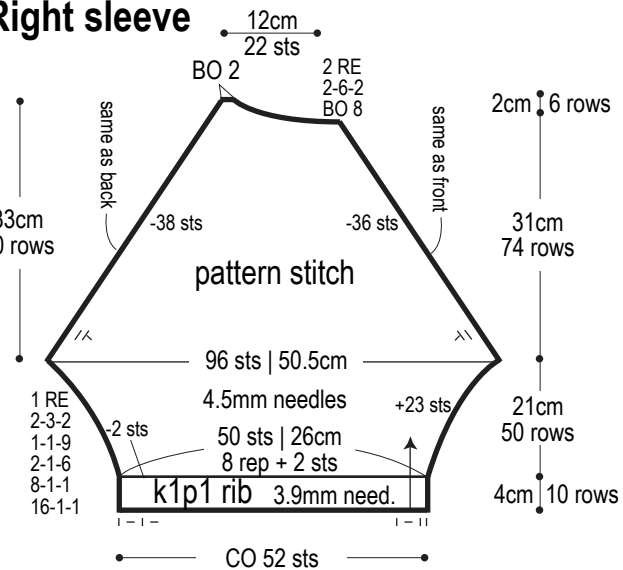
Back



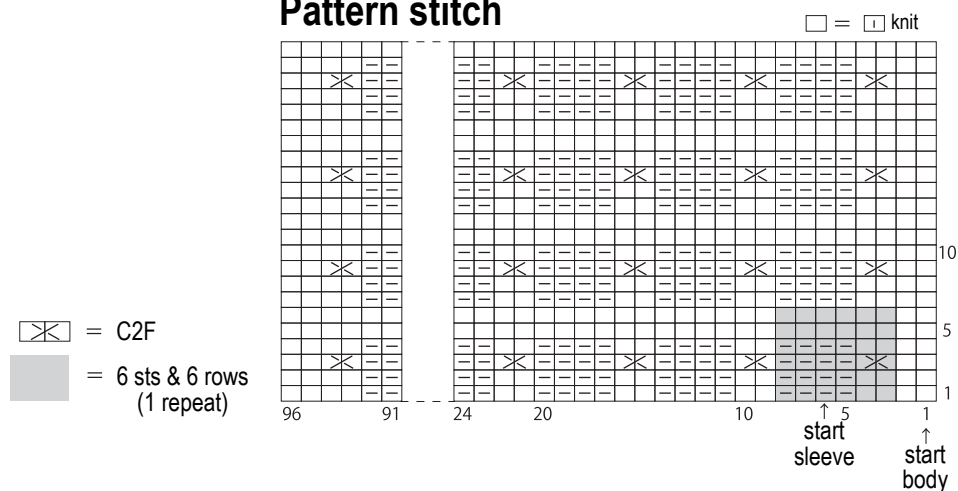
Front



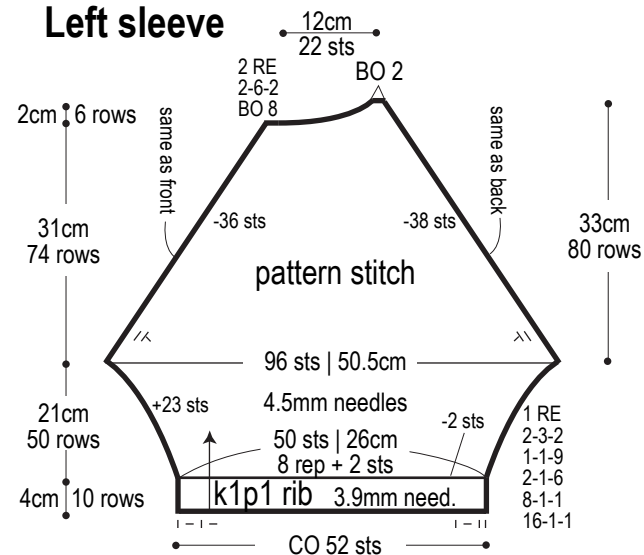
Right sleeve



Pattern stitch

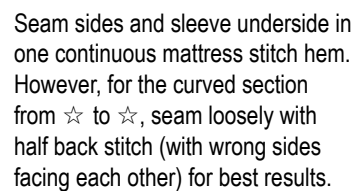


Left sleeve



collar: k1p1 ribbing
3.9mm DPNs

collar: k1p1 ribbing
3.9mm DPNs



3.9mm needles, 2 strands of yarn

3.9mm needles, 2 strands of yarn

