

548h-sweater Honwaka Tee



Suggested yarn:

- Pierrot Yarns Honwaka [100% cotton; 120yds/110m per 1.23oz/35g skein]; color #90 sage blue, 9 skeins [300g]

Tools/Notions:

- 2.7mm (approx. US 2) and 3.3mm (approx. US4) knitting needles or sizes necessary to achieve gauge
- 2.7mm (approx. US 2) double-pointed knitting needles or size necessary to achieve gauge
- cable needle

Finished measurements:

- bust 96cm/37.79"
- center back neck-to-cuff 39.5cm/15.55"
- back length 58cm/22.83"
- sleeve length 15.5cm/6.10"

Gauge (10cm/4" square):

- stockinette stitch: 25 sts and 35 rows
- pattern stitch: 27 sts and 35 rows

Gauge may vary according to individual knitting style. Change needle size if necessary to achieve gauge. Alternatively, rework pattern with your own gauge measurements.

Summary

Body: Cast on with long-tail cast-on method. Work in k1p1 ribbing, then continue in pattern stitch and stockinette stitch, working increases on first row. Shape neckline by binding off stitches as indicated and by working decreases at the edges as indicated.

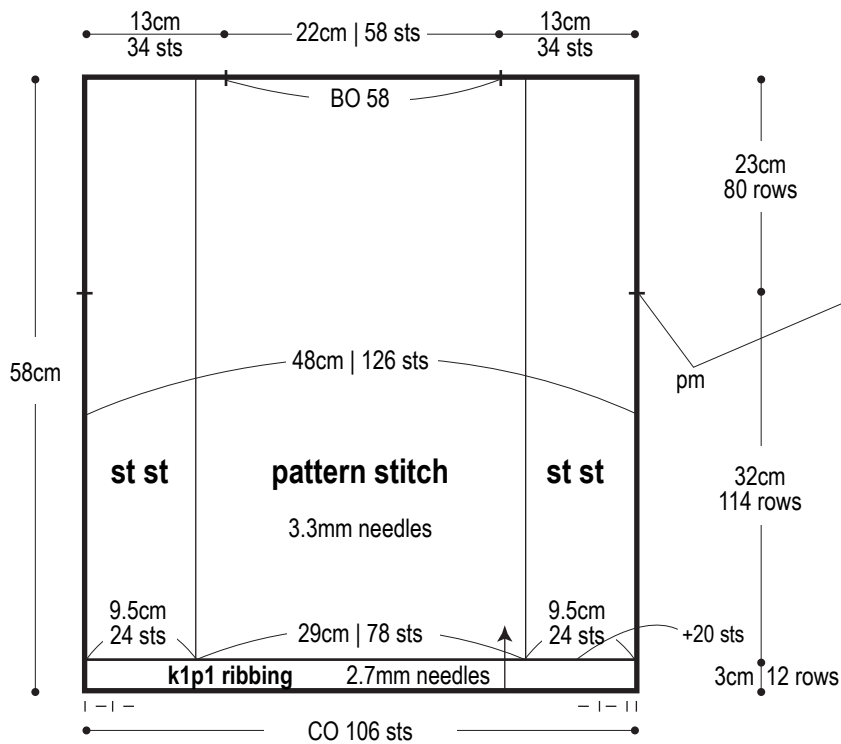
Sleeves: Seam shoulders with crochet slip stitch seam. Pick up stitches from armhole and begin to work sleeve. After pattern stitch section, change to k1p1 ribbing, working decreases on first row of ribbing. Bind off in pattern.

Finishing: Pick up stitches around neckline; work collar edging in k1p1 ribbing in the round. Bind off in pattern as for cuffs. Seam sides from hem to cuffs with mattress stitch.

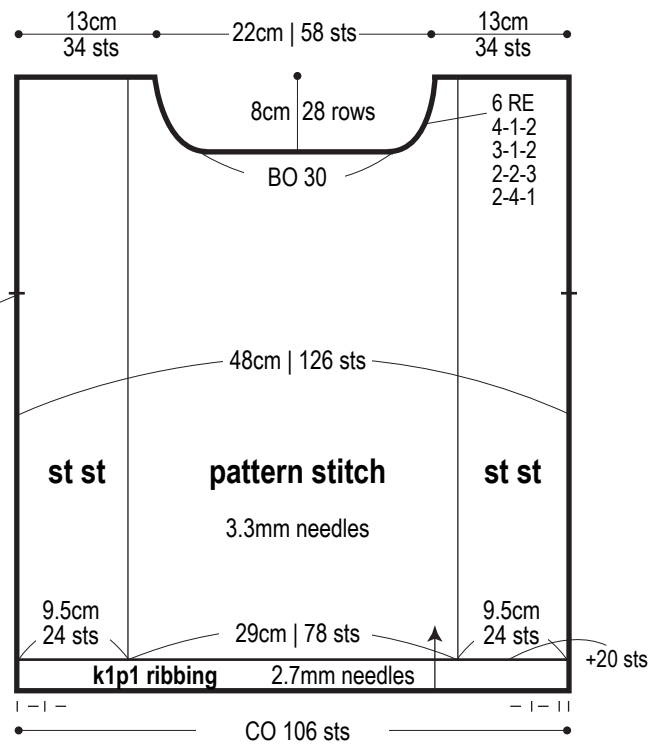
Abbreviations:

BO = bind off
CO = cast on
k = knit
p = purl
pm = place marker
PU = pick up
RE = row(s) even
st st = stockinette stitch
= rows-stitches-times

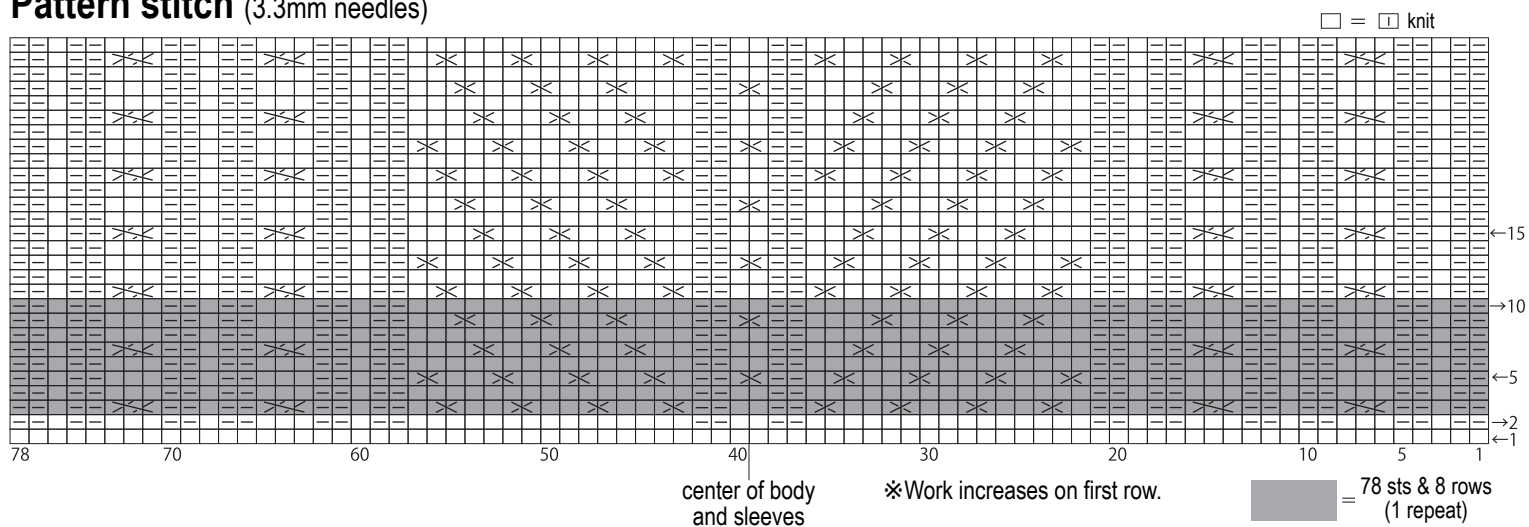
Back



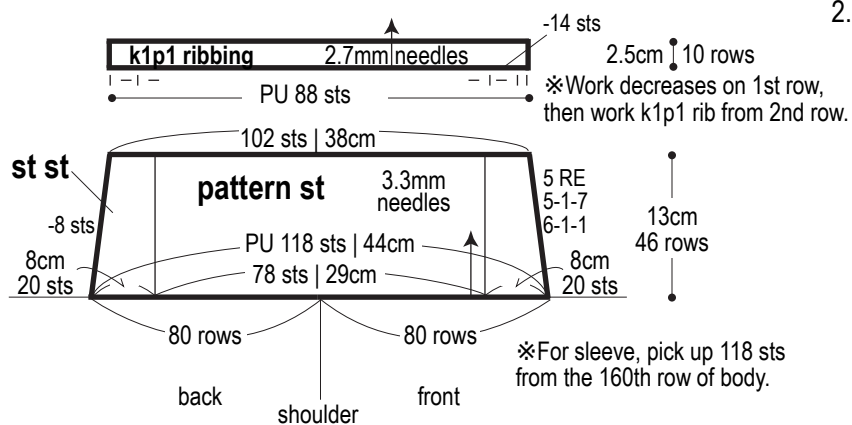
Front



Pattern stitch (3.3mm needles)



Sleeve



Collar: k1p1 ribbing

2.7mm DPNs

