

26-27-16 Owl Cable Vest



Suggested yarn:

- Pierrot Yarns Nukunuku Rover [60% acrylic, 40% wool; 47yds/43m per 1.41oz/40g skein]; color #5 dark moss green, 8 skeins [300g]

Tools/Notions:

- 5.1mm (approx. US 8) knitting needles or size necessary to achieve gauge
- 5.1mm (approx. US 8) and 5.7mm (approx. US 9) double-pointed knitting needles or sizes necessary to achieve gauge
- cable needle

Finished measurements:

- bust 92cm/36.22"
- cross back width 34cm/13.39"
- back length 49cm/19.29"

Gauge (10cm/4" square):

- stockinette stitch: 15 sts and 20 rows
- pattern stitch: 15.5 sts and 20 rows

Gauge may vary according to individual knitting style. Change needle size if necessary to achieve gauge. Alternatively, rework pattern with your own gauge measurements.

Summary

Body: Cast on for back with long-tail cast-on method. Work pattern stitch A for 10 rows, then continue in stockinette stitch. Cast on for front as for back, but work pattern stitch B panel at the center. Shape armscye as indicated in schematic.

Finishing: Seam shoulders with three-needle bind-off method. Seam sides with mattress stitch. Pick up stitches around neckline. Work collar in stockinette stitch in the round for 20 rounds, altering gauge when indicated. Bind off.

Abbreviations:

BO = bind off

CO = cast on

OH = on hold (that is, place on stitch holder)

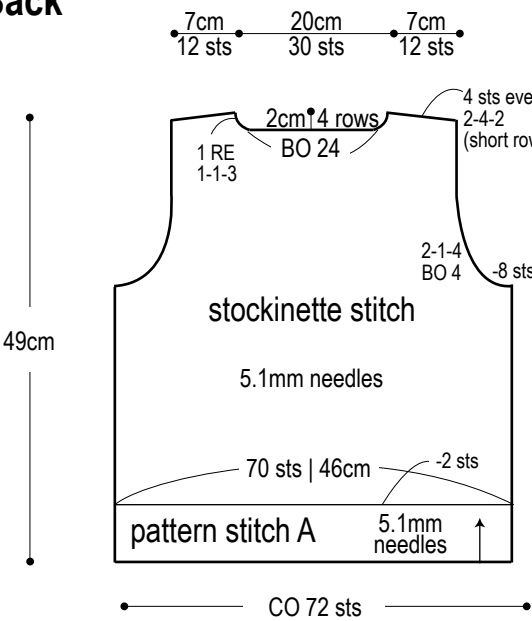
PU = pick up

RE = row(s) even

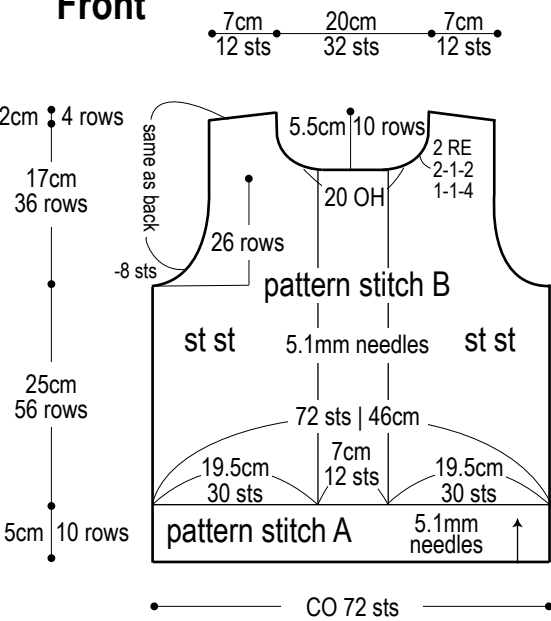
st st = stockinette stitch

#-#-# = rows-stitches-times

Back

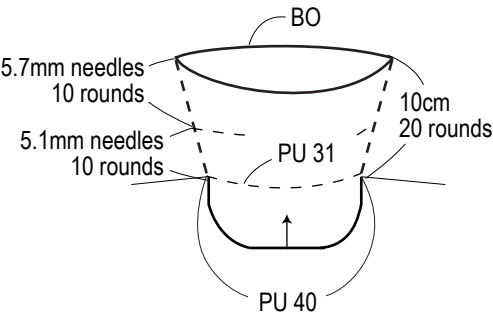


Front

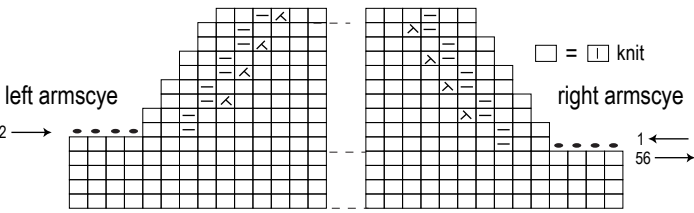


Collar

stockinette stitch



Armscye decreases



Pattern stitch

